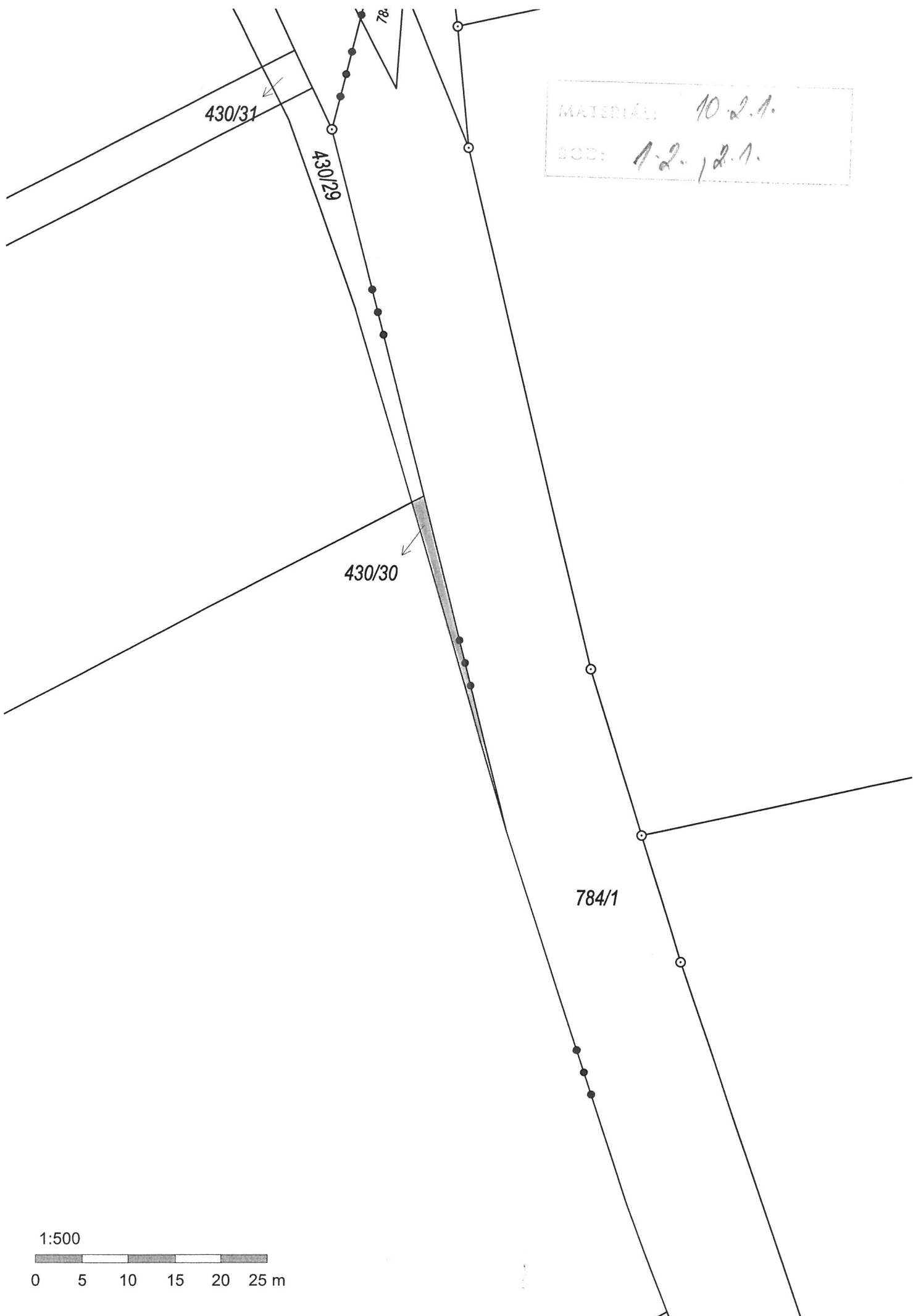


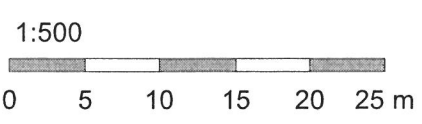
k.ú. Lazce

MATERIÁL: 10.2.1.
BOD: 1.1.

k.u. Libo5



MATERIAL: 10 d. 1.
BOD: 1 d. 1.



k.ú. Horní Stěpáňov

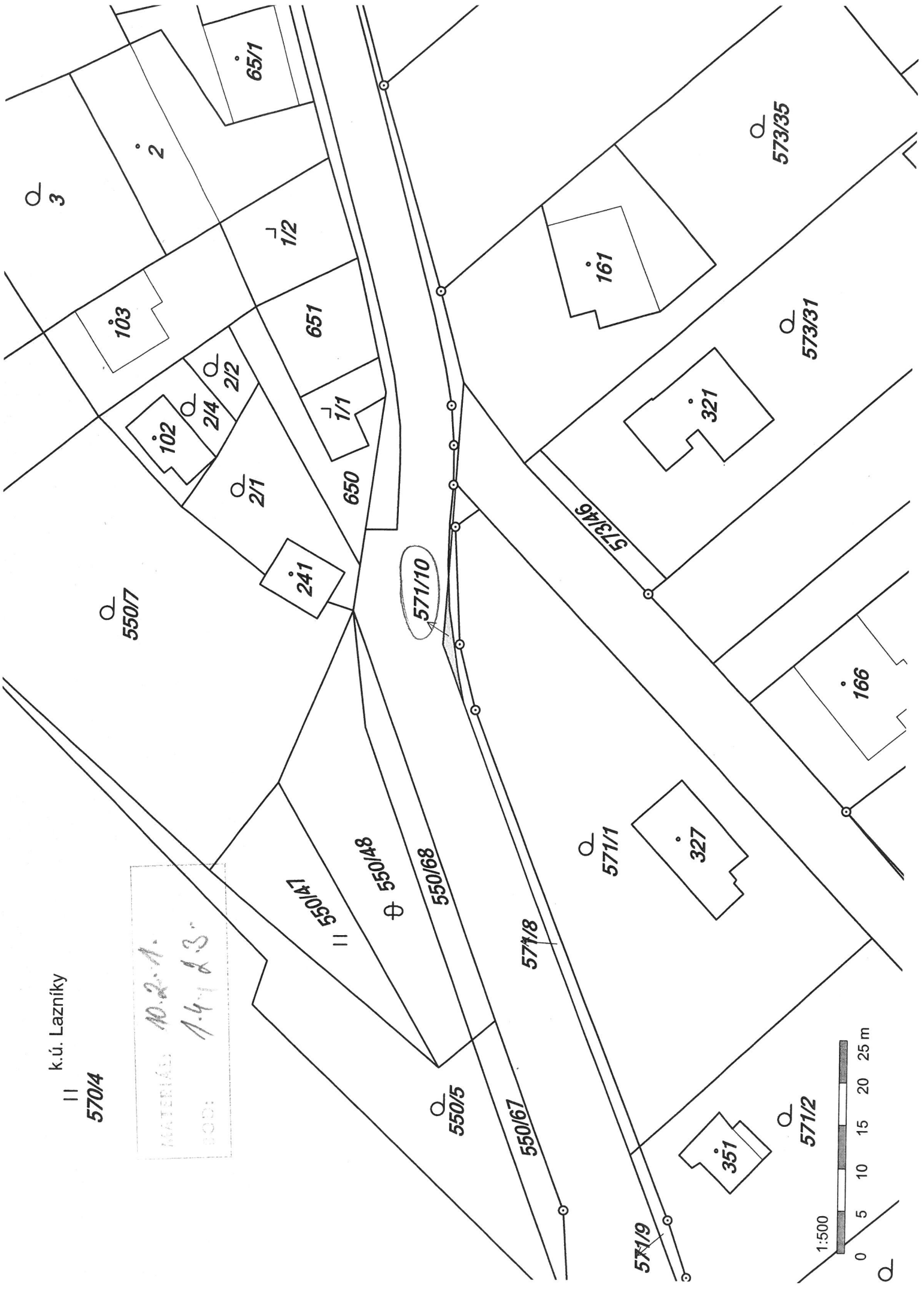
mapový 10.2.1.
1.3., 2.2.



k.ú. Lazníky

||
570/4

MATERIÁL: 10.2.1.
BOD: 1.4.1.3.



550/17

103

102

2/4

2/2

2/1

241

650

1/1

651

1/2

65/1

3

2

571/10

550/68

550/48

550/47

550/5

550/67

571/8

571/1

571/9

351

327

573/46

161

571/2

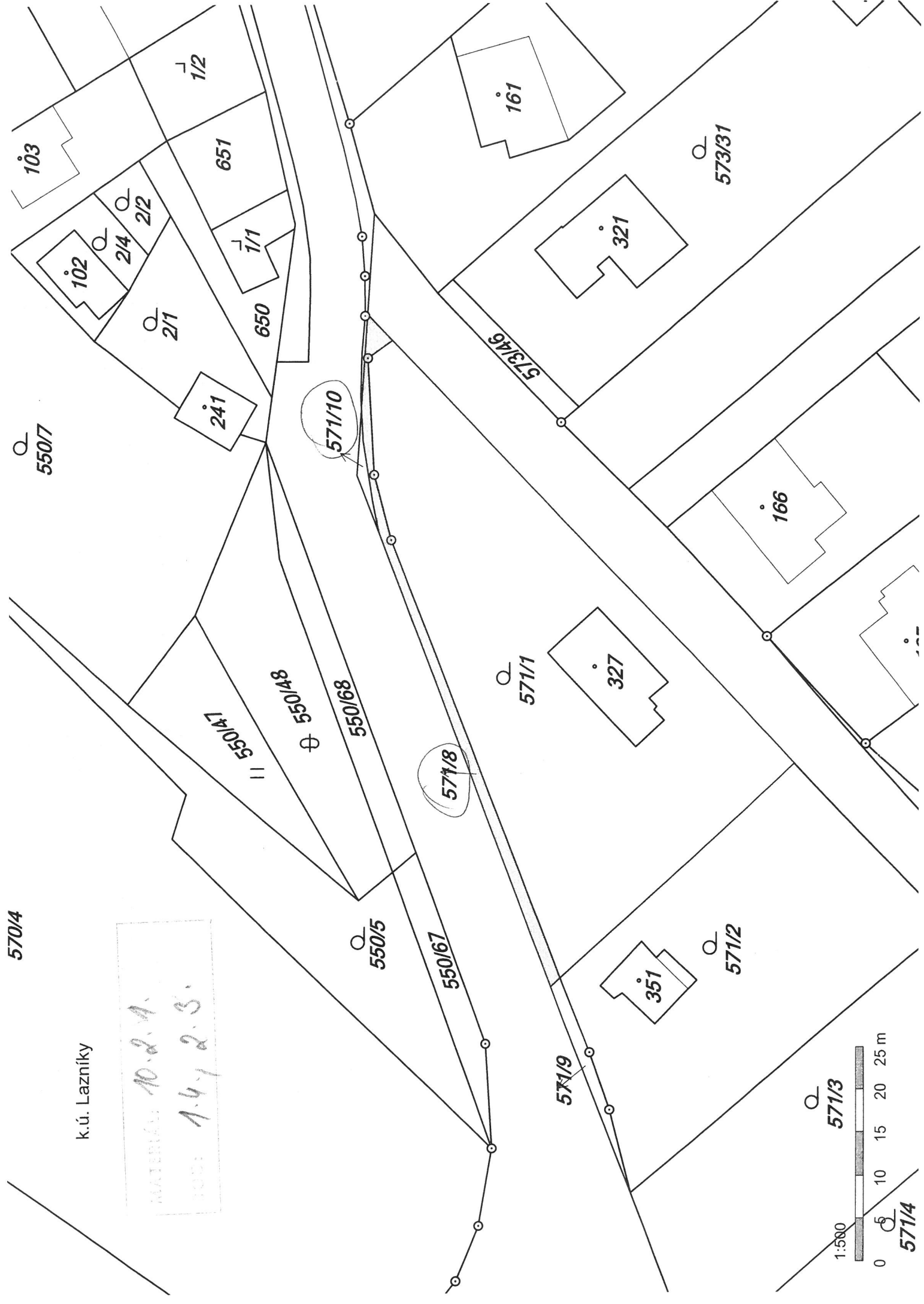
166

573/31

573/35

1:500

0 5 10 15 20 25 m



570/4

k.ú. Lazníky

MATERIÁL: 10.2.1.1.
 ČÍSLO: 1.4.1.2.3.

571/3

1:500



571/4

k.u. Moice u Stamberka

MATERIAL: 10.2.1.
BOD: 2.4.

590/14

603/45

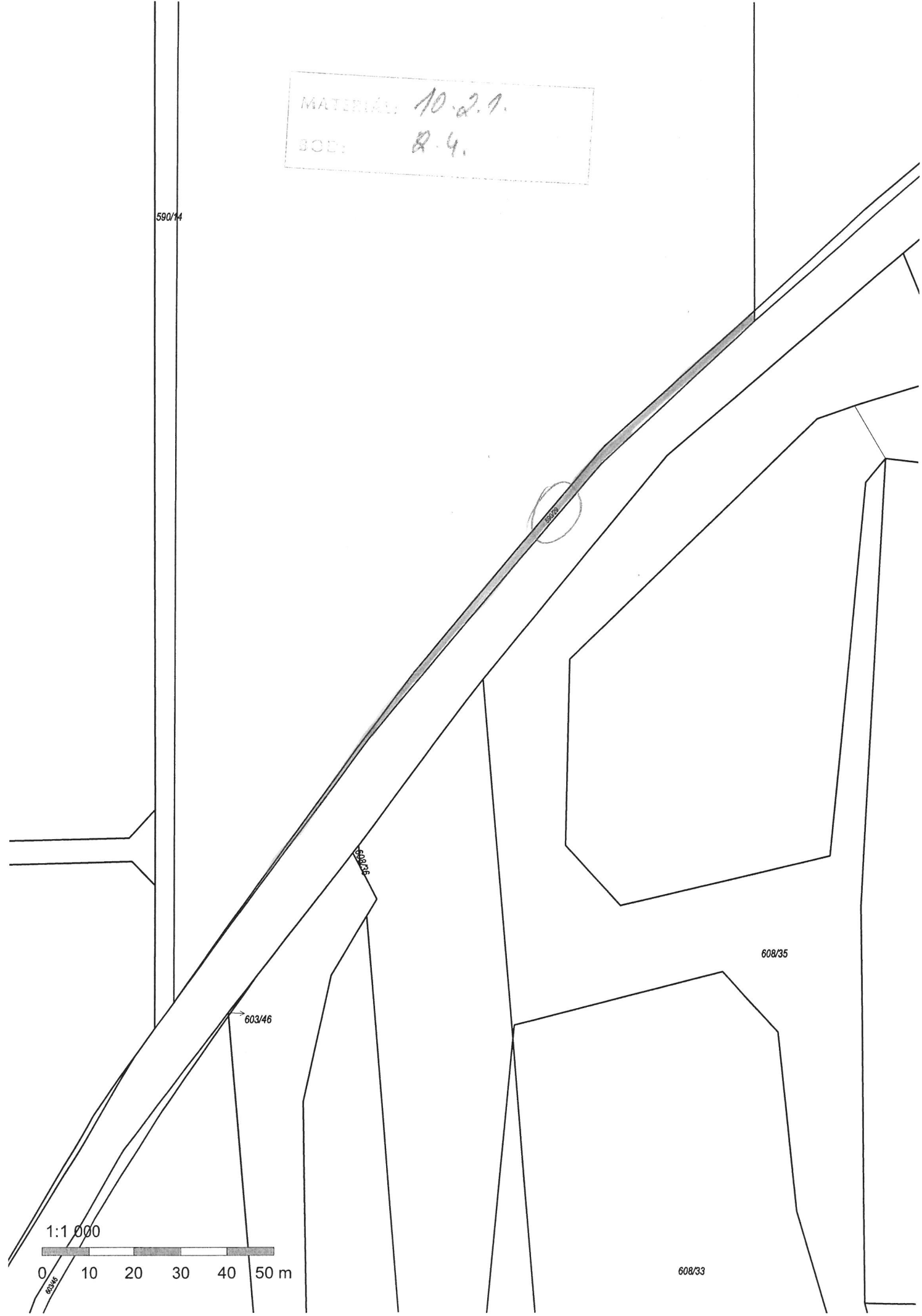
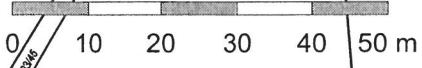
603/46

603/46

608/35

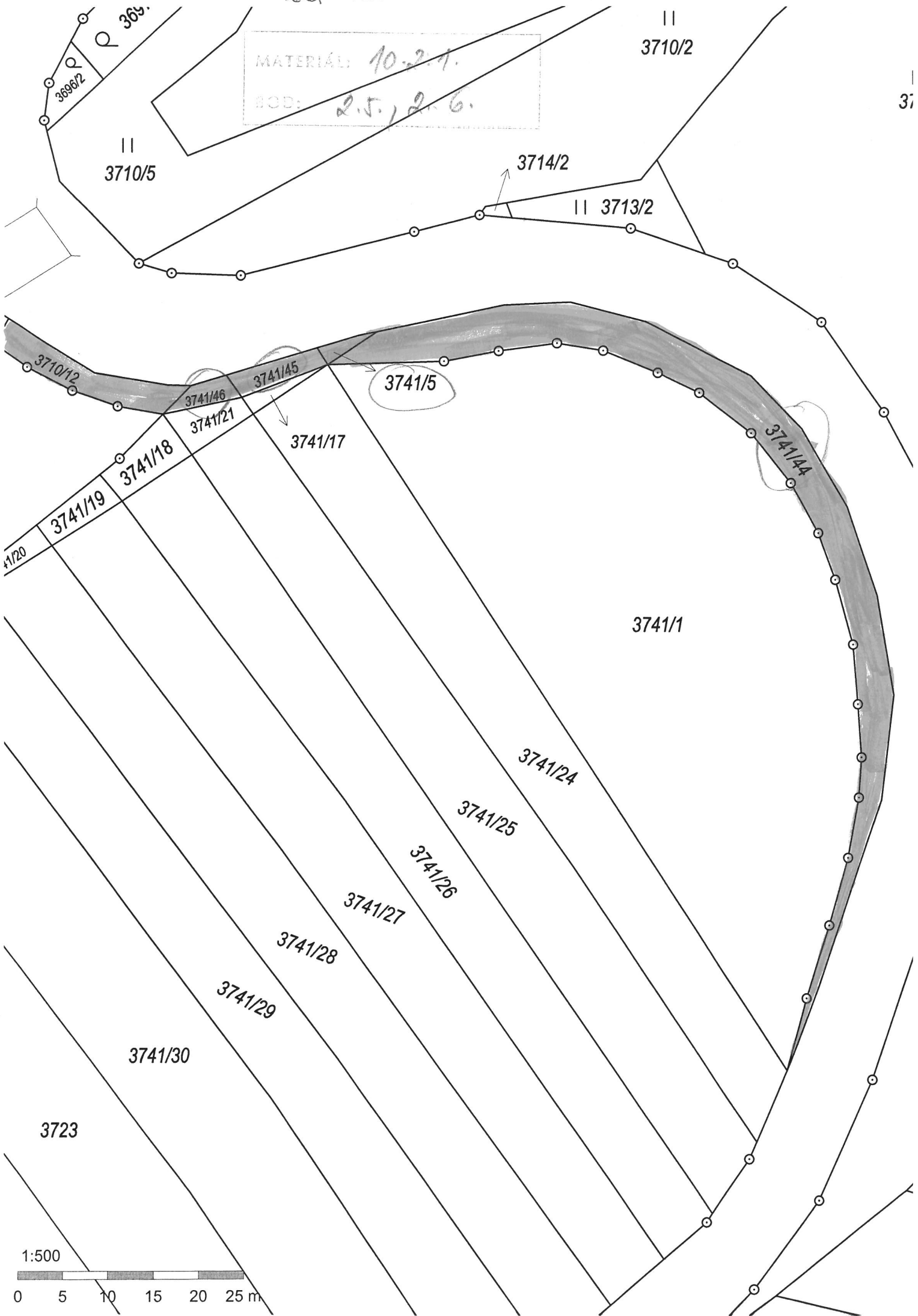
608/33

1:1 000

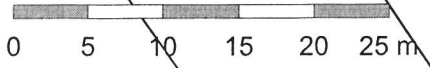


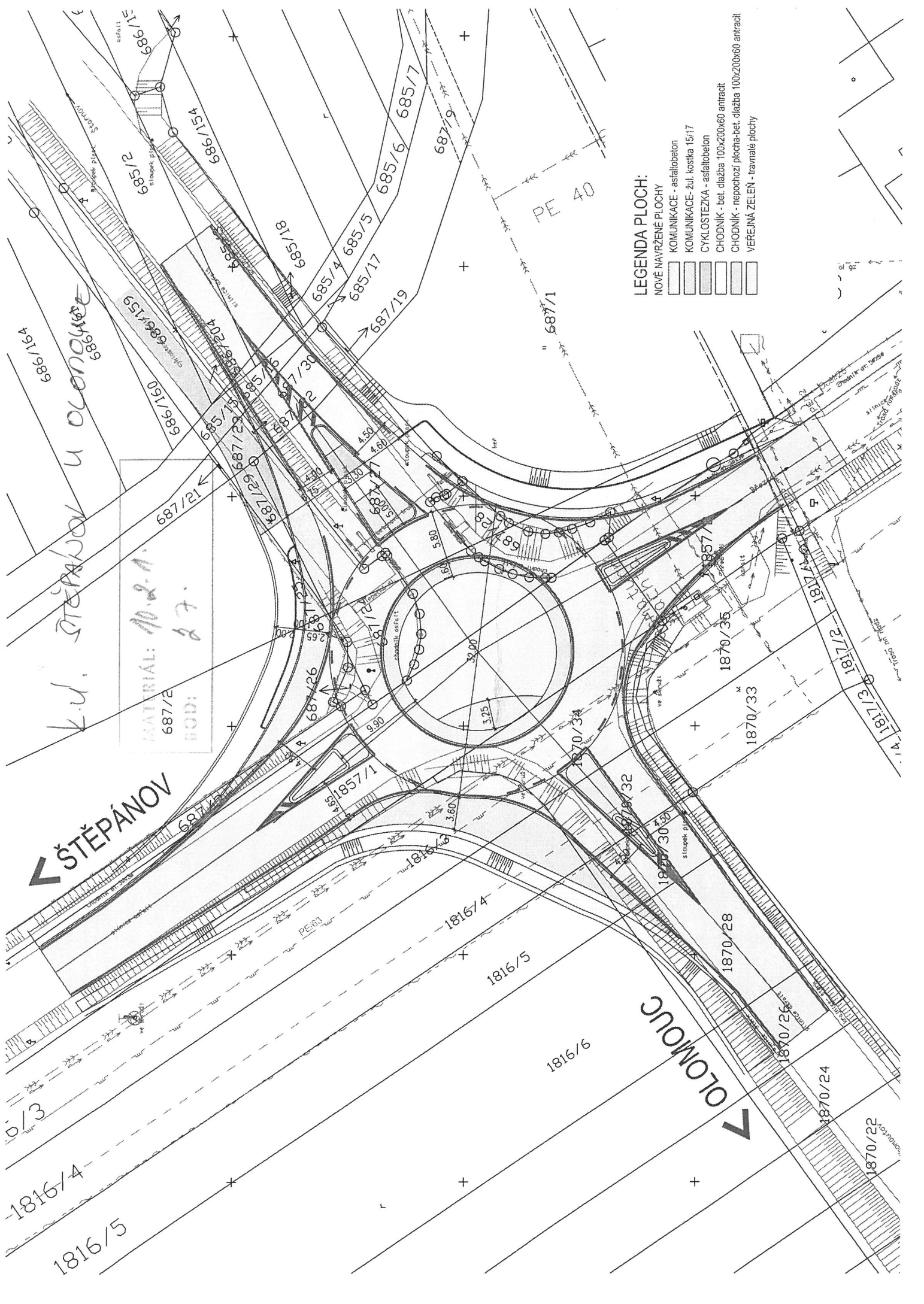
Kač. Pkui'

MATERIAL: 10.2.1.
BOD: 2.5. / 2.6.



1:500





k.ú. ŠTĚPÁNOV u OLOMOUČE
 MATERIÁL: 10.2.1.1.
 BOD: 27.

LEGENDA PLOCHY:

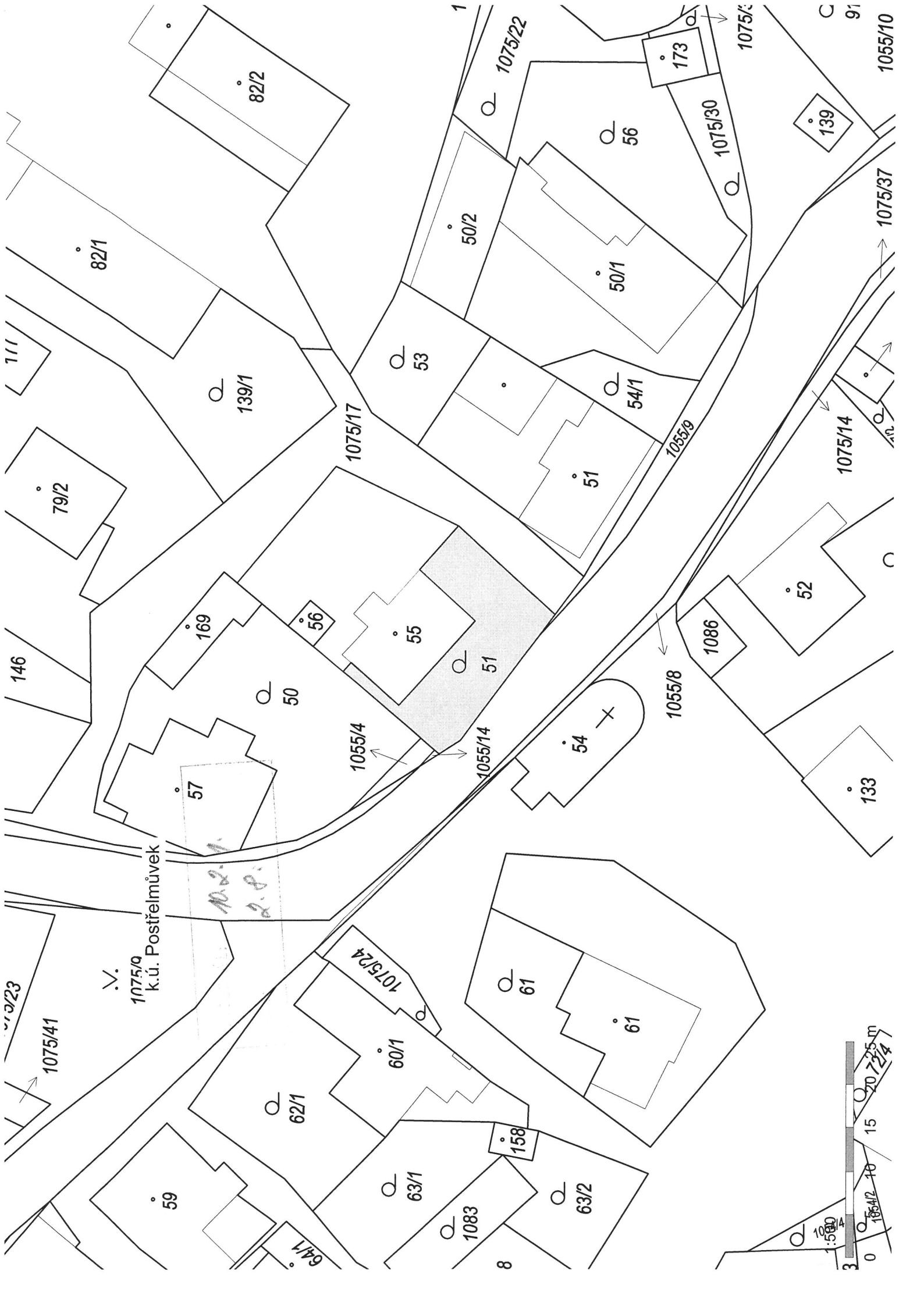
- NOVĚ NAVRŽENÉ PLOCHY
- KOMUNIKACE - asfaltobeton
- KOMUNIKACE - žul. kostka 15/17
- CYKLOSTEZKA - asfaltobeton
- CHODNÍK - bet. dlažba 100x200x60 antracit
- CHODNÍK - nepochozí plocha-bet. dlažba 100x200x60 antracit
- VEREJNÁ ZELEN - travnaté plochy

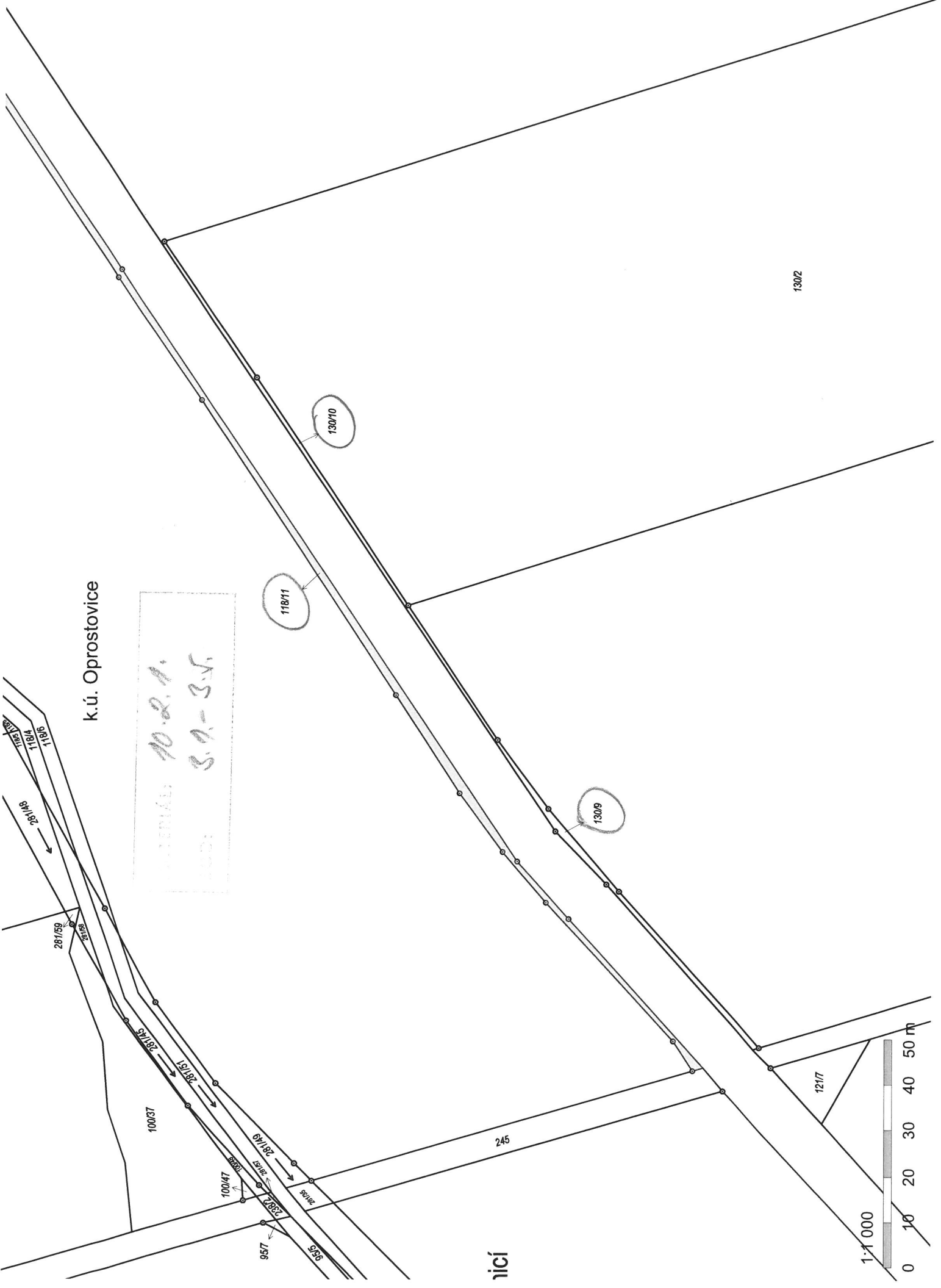
ŠTĚPÁNOV
 OLMOUC

1816/4
 1816/5

OLMOUC
 1870/28
 1870/29
 1870/30
 1870/31
 1870/32
 1870/33
 1870/34
 1870/35

1817/3
 1817/2
 1817/1
 1817/4
 1817/5
 1817/6
 1817/7
 1817/8
 1817/9
 1817/10
 1817/11
 1817/12
 1817/13
 1817/14

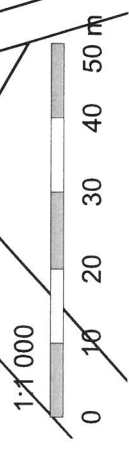




k.ú. Oprostovice

10.2.1.
S. 9. - 3.5.

híčí



130/2

130/10

118/11

130/9

121/7

245

100/37

100/47

957

956

287/59

287/18

287/15

287/14

287/13

287/12

287/11

287/10

287/9

287/8

118/10

118/11

118/12

118/13

118/14

118/15

118/16

118/17

118/18

118/19

118/20

118/21

118/22

118/23

118/24

118/25

118/26

118/27

118/28

118/29

118/30

118/31

118/32

118/33

118/34

118/35

118/36

118/37

118/38

118/39

118/40

118/41

118/42

287/18

287/19

287/20

287/21

287/22

287/23

287/24

287/25

287/26

287/27

287/28

287/29

287/30

287/31

287/32

287/33

287/34

287/35

287/36

287/37

287/38

287/39

287/40

287/41

287/42

287/43

287/44

287/45

287/46

287/47

287/48

287/49

287/50

118/10

118/11

118/12

118/13

118/14

118/15

118/16

118/17

118/18

118/19

118/20

118/21

118/22

118/23

118/24

118/25

118/26

118/27

118/28

118/29

118/30

118/31

118/32

118/33

118/34

118/35

118/36

118/37

118/38

118/39

118/40

118/41

118/42

118/10

118/11

118/12

118/13

118/14

118/15

118/16

118/17

118/18

118/19

118/20

118/21

118/22

118/23

118/24

118/25

118/26

118/27

118/28

118/29

118/30

118/31

118/32

118/33

118/34

118/35

118/36

118/37

118/38

118/39

118/40

118/41

118/42

118/10

118/11

118/12

118/13

118/14

118/15

118/16

118/17

118/18

118/19

118/20

118/21

118/22

118/23

118/24

118/25

118/26

118/27

118/28

118/29

118/30

118/31

118/32

118/33

118/34

118/35

118/36

118/37

118/38

118/39

118/40

118/41

118/42

118/10

118/11

118/12

118/13

118/14

118/15

118/16

118/17

118/18

118/19

118/20

118/21

118/22

118/23

118/24

118/25

118/26

118/27

118/28

118/29

118/30

118/31

118/32

118/33

118/34

118/35

118/36

118/37

118/38

118/39

118/40

118/41

118/42

118/10

118/11

118/12

118/13

118/14

118/15

118/16

118/17

118/18

118/19

118/20

118/21

118/22

118/23

118/24

118/25

118/26

118/27

118/28

118/29

118/30

118/31

118/32

118/33

118/34

118/35

118/36

118/37

118/38

118/39

118/40

118/41

118/42

118/10

118/11

118/12

118/13

118/14

118/15

118/16

118/17

118/18

118/19

118/20

118/21

118/22

118/23

118/24

118/25

118/26

118/27

118/28

118/29

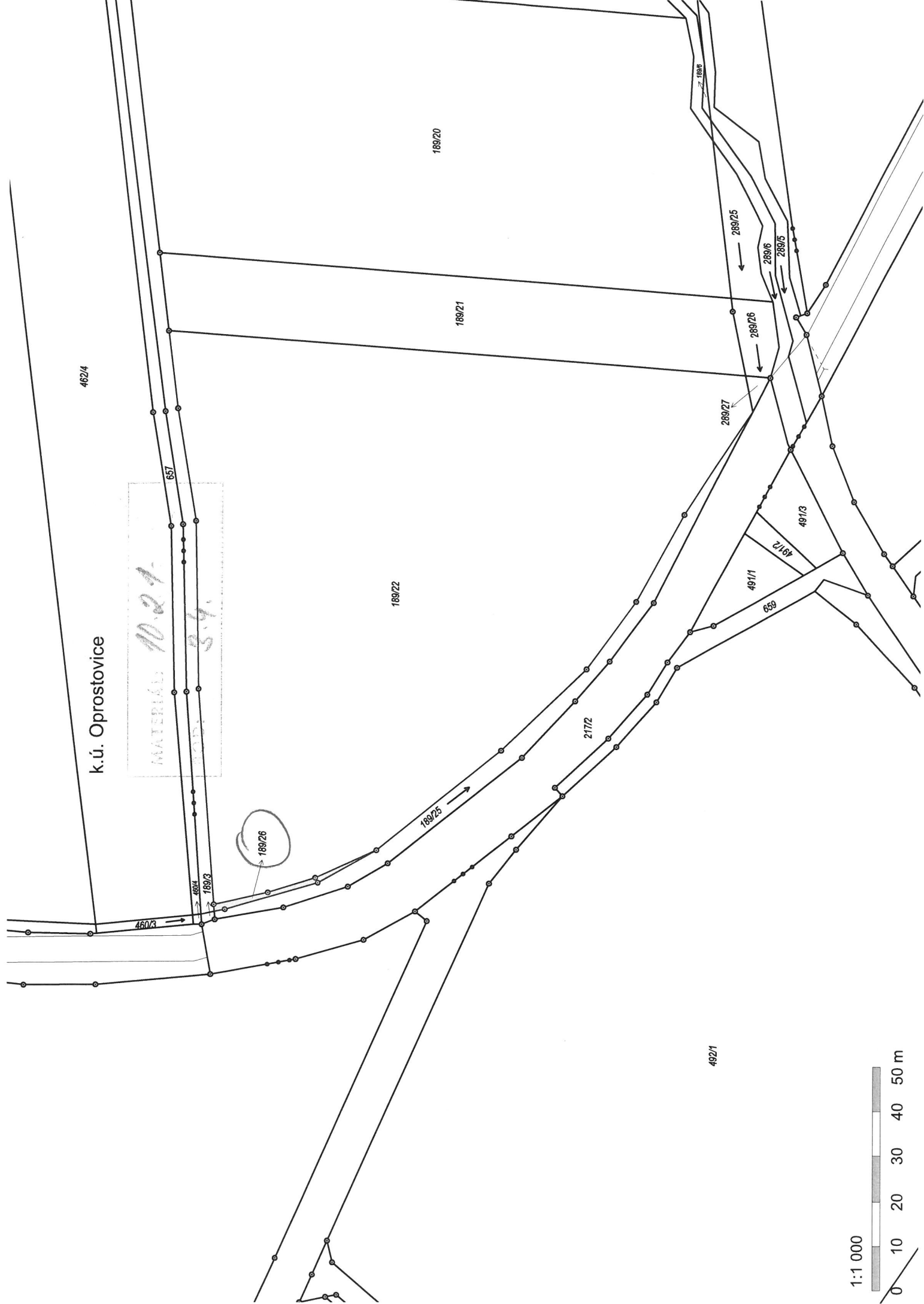
118/30

118/31

118/32

118/33

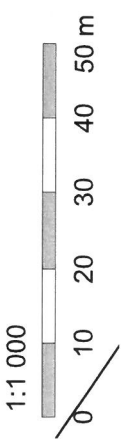
118/34



k.ú. Oprostovice

MATERIÁL 10.2.1.
3.4.

189/26



171/40

171/41

171/67

203/1

171/61

284/2

203/7

205/2

218

Trávník

205/1

k.ú. Oprostovice

MATERIÁL: 10.2.7
BOD: 3.V.

405/2

405/5

405/4

405/3

1:1 000



405/6

844