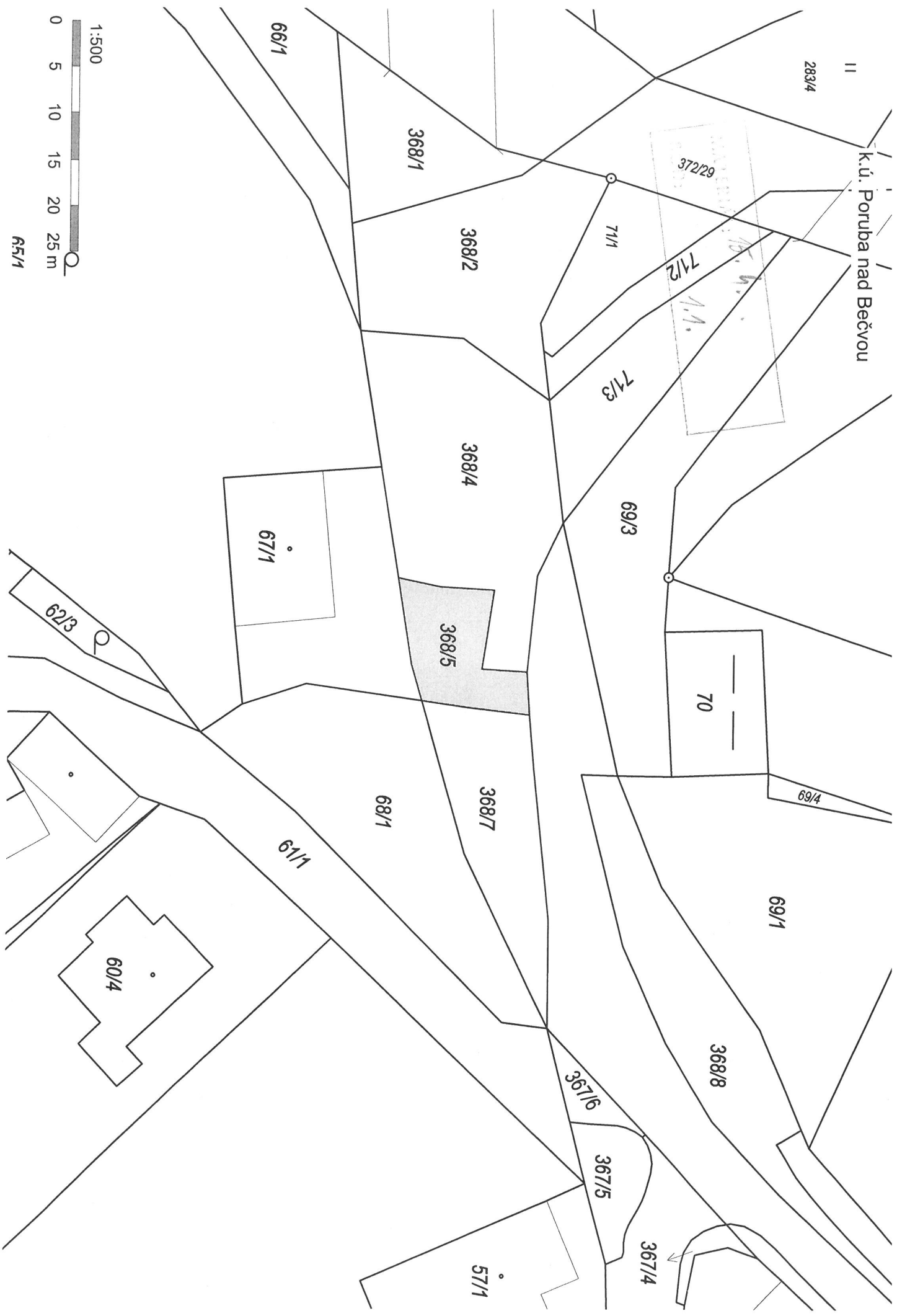


II

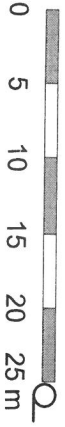
283/4

k.ú. Poruba nad Bečvou

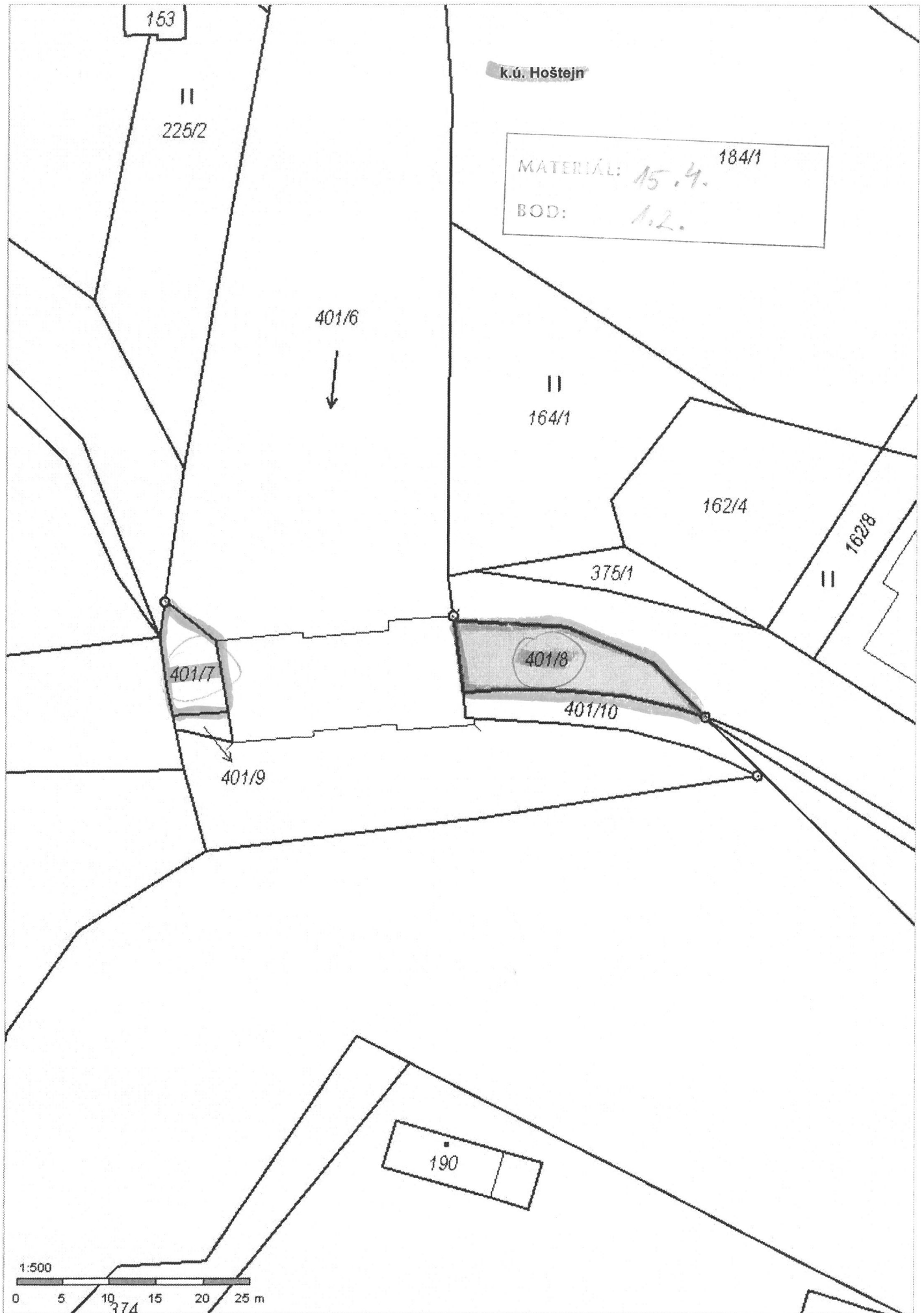
372/29
16. 6. 1911



1:500



A5/1



K.ú. Nová Ves u Jeseníka

MAPEKÁK 15.11
DOP: 1.3.



1:4 000

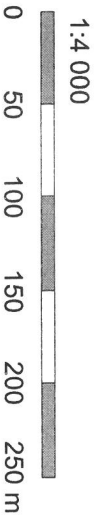
0 50 100 150 200 250 m

k.ú. Kladky

15.4.

1.4.

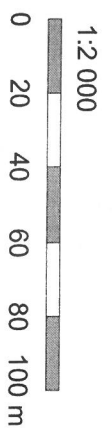
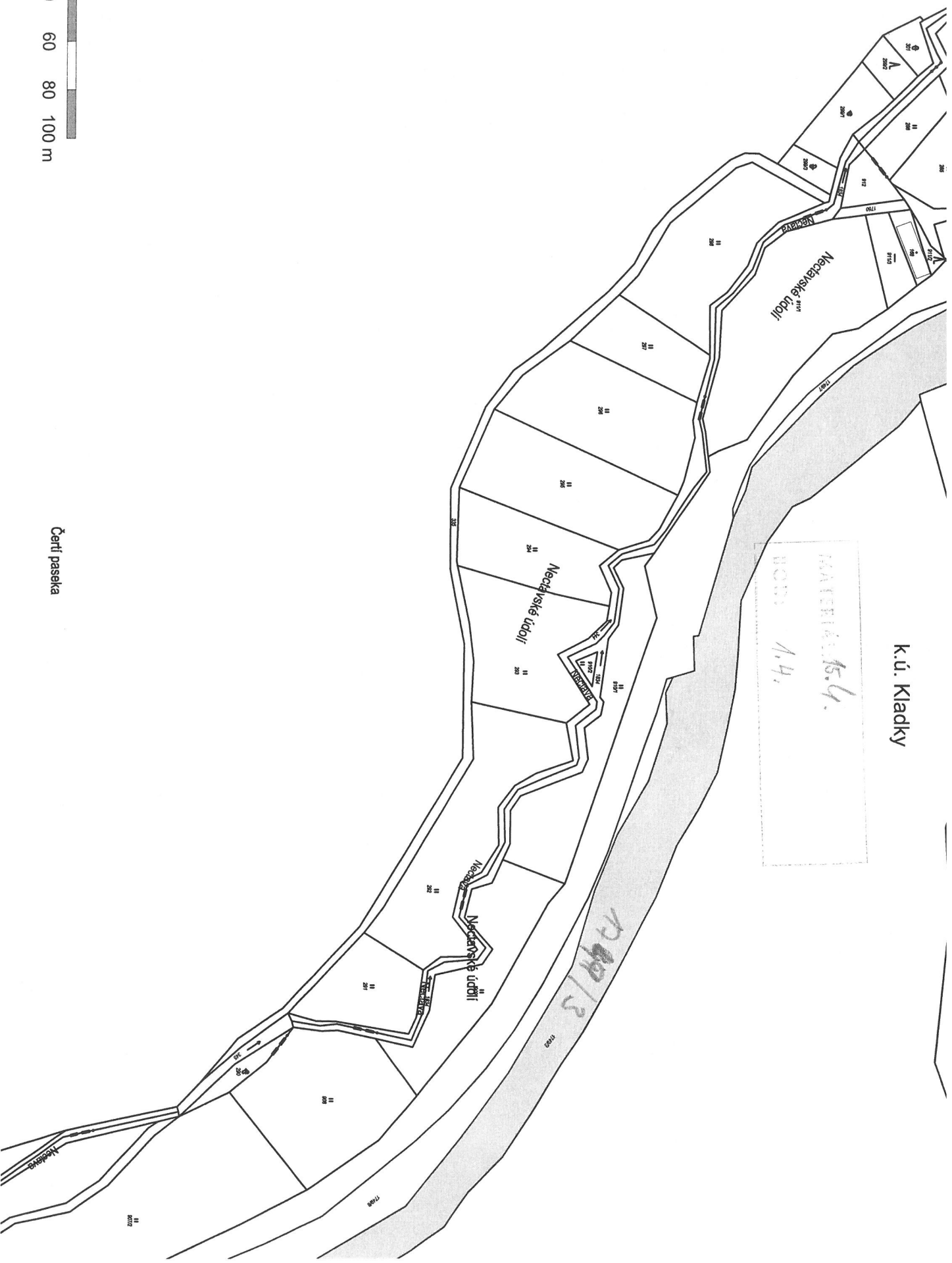
→ 1249/5



k.ú. Kladky

MATERIÁL 15.4.
MOR: 1.4.

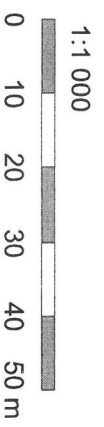
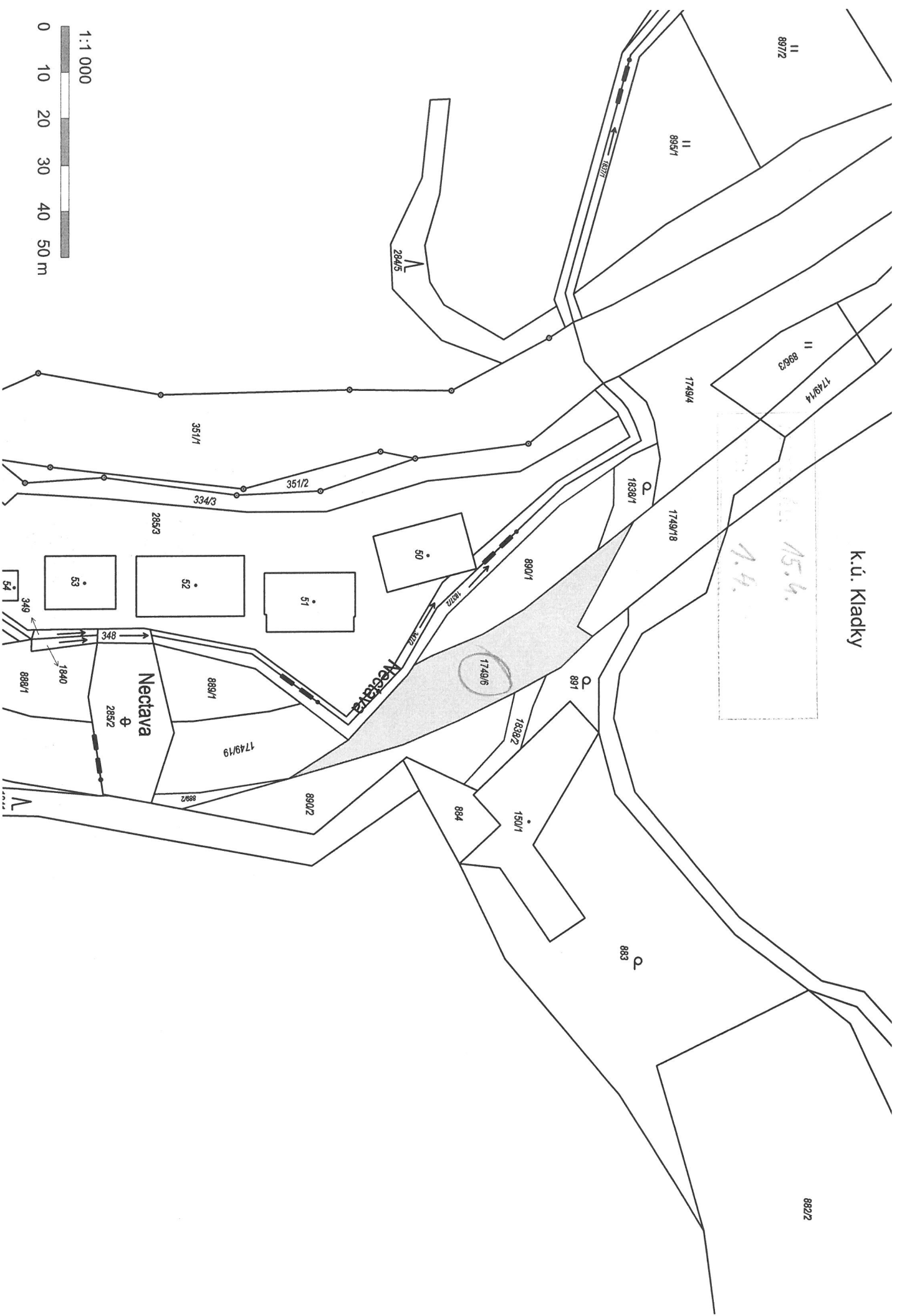
1249/3



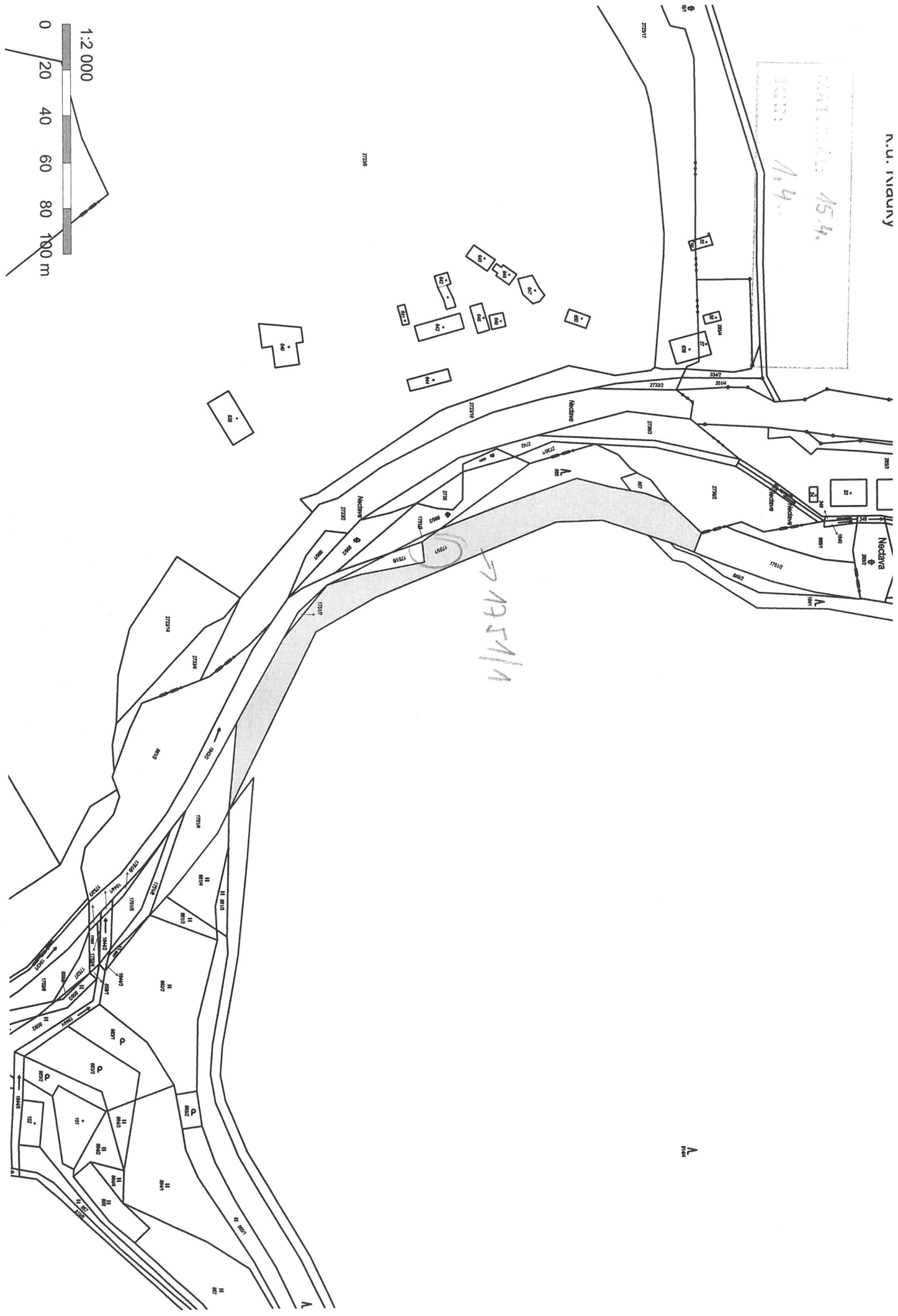
Čerťi paseka

k.ú. Kladky

15.4.
9.4.



154.
1.4.



k.ú. Staré Město pod Kralickým Sněžníkem



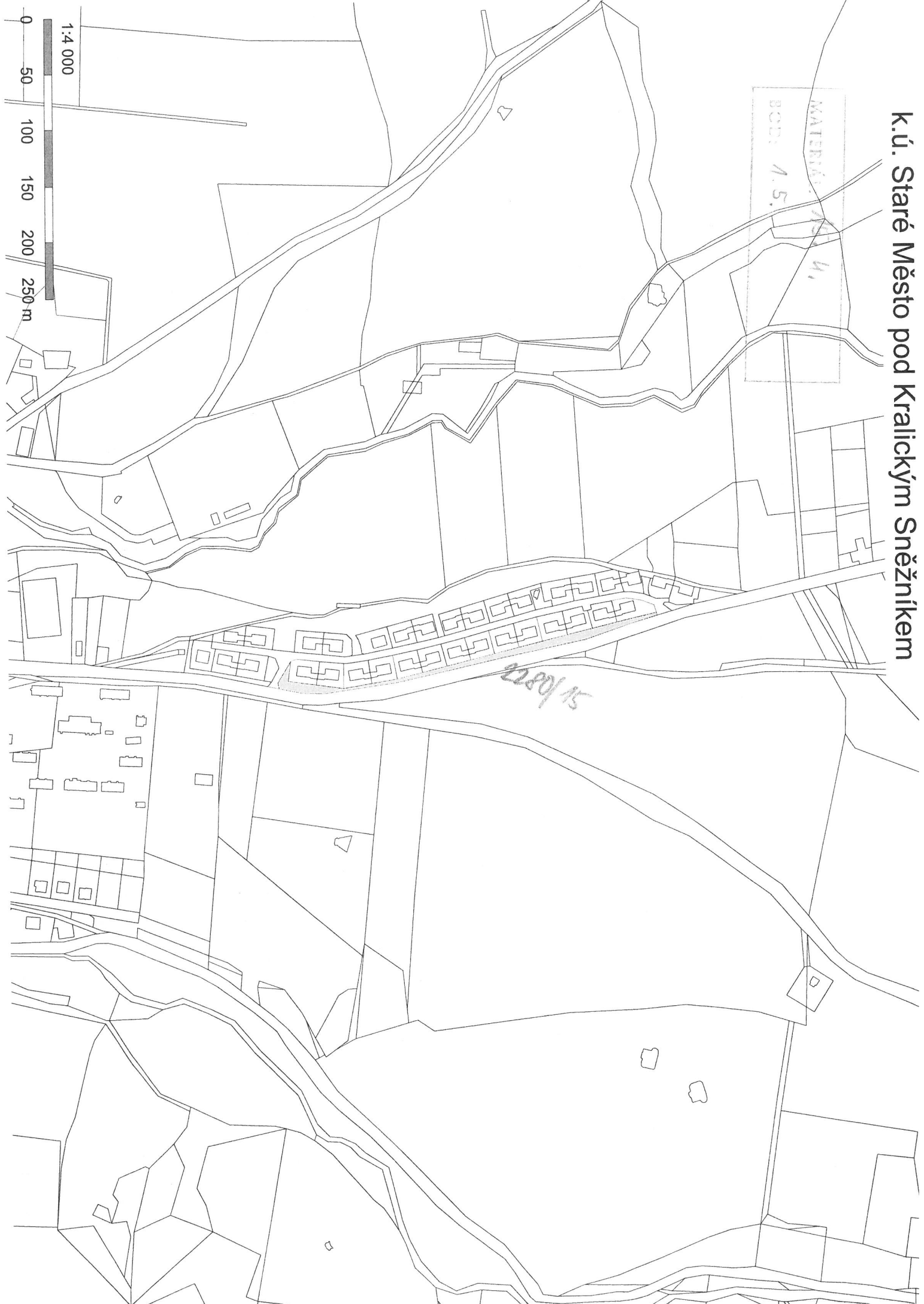
1:4 000

0 50 100 150 200 250 m

k.ú. Staré Město podKralickým Sněžníkem

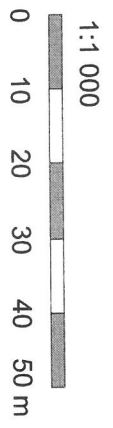
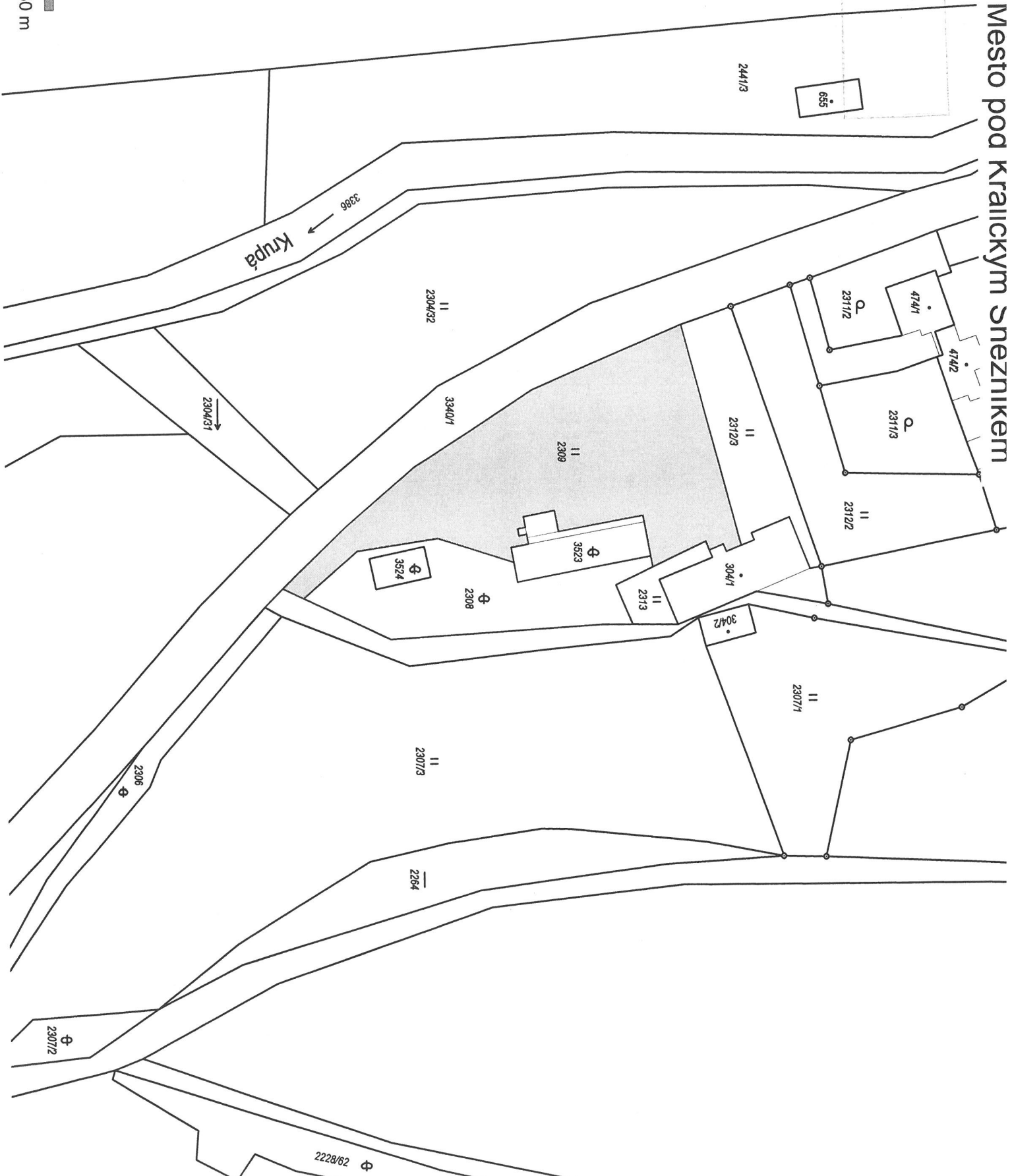
MATERIÁL: M. 4,
BOD: 1.5.

2280/15

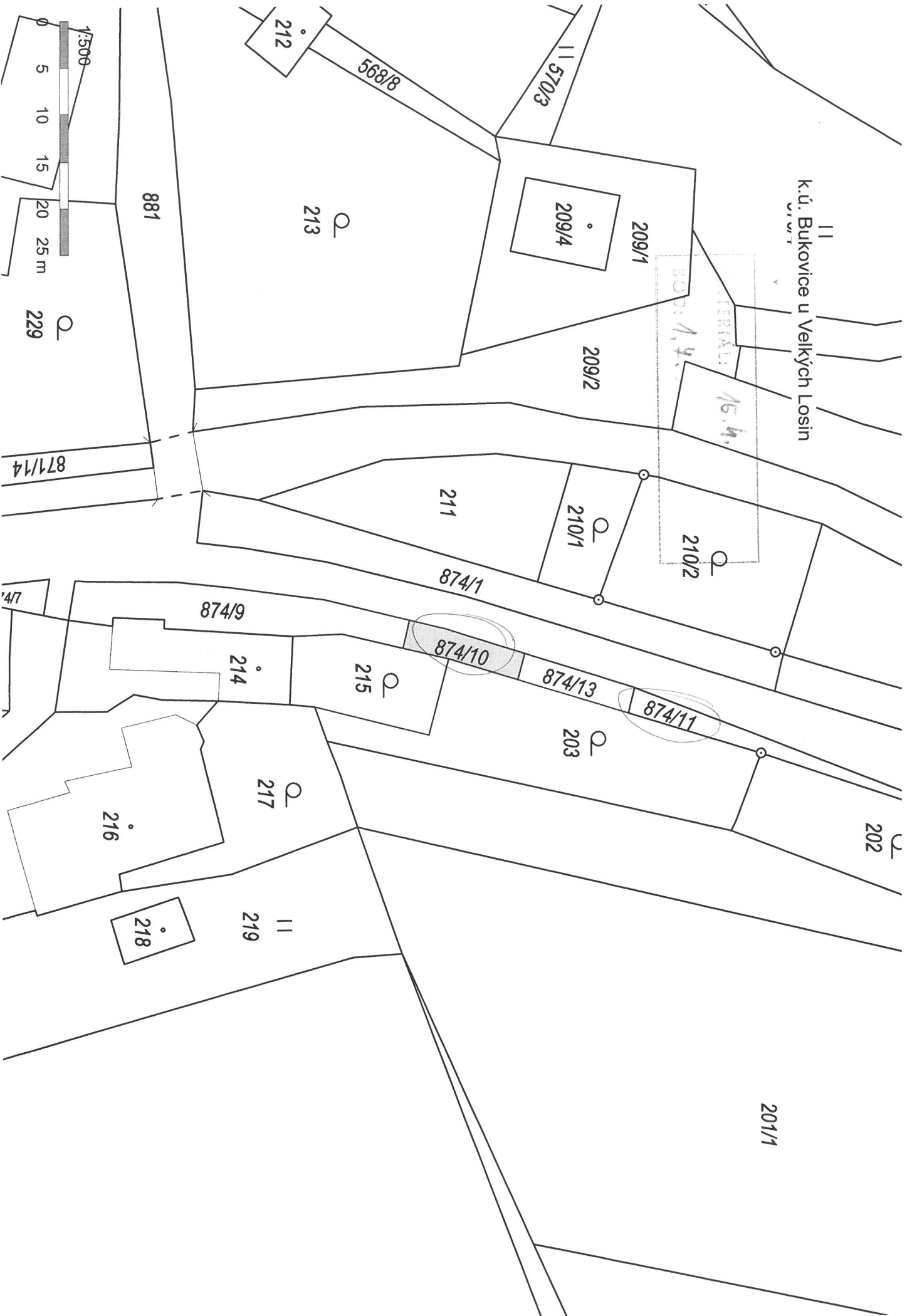


K.ú. Staré mesto pod Kraľickým snežníkom

15.4,
1.5.
655



11
K.ú. Bukovnice u Velkých Losin



1:500



0 5 10 15 20 25 m

K.ú. Lhota nad Moravou

MATERIÁL: 15.4.
SOB: 1.8.

11/2



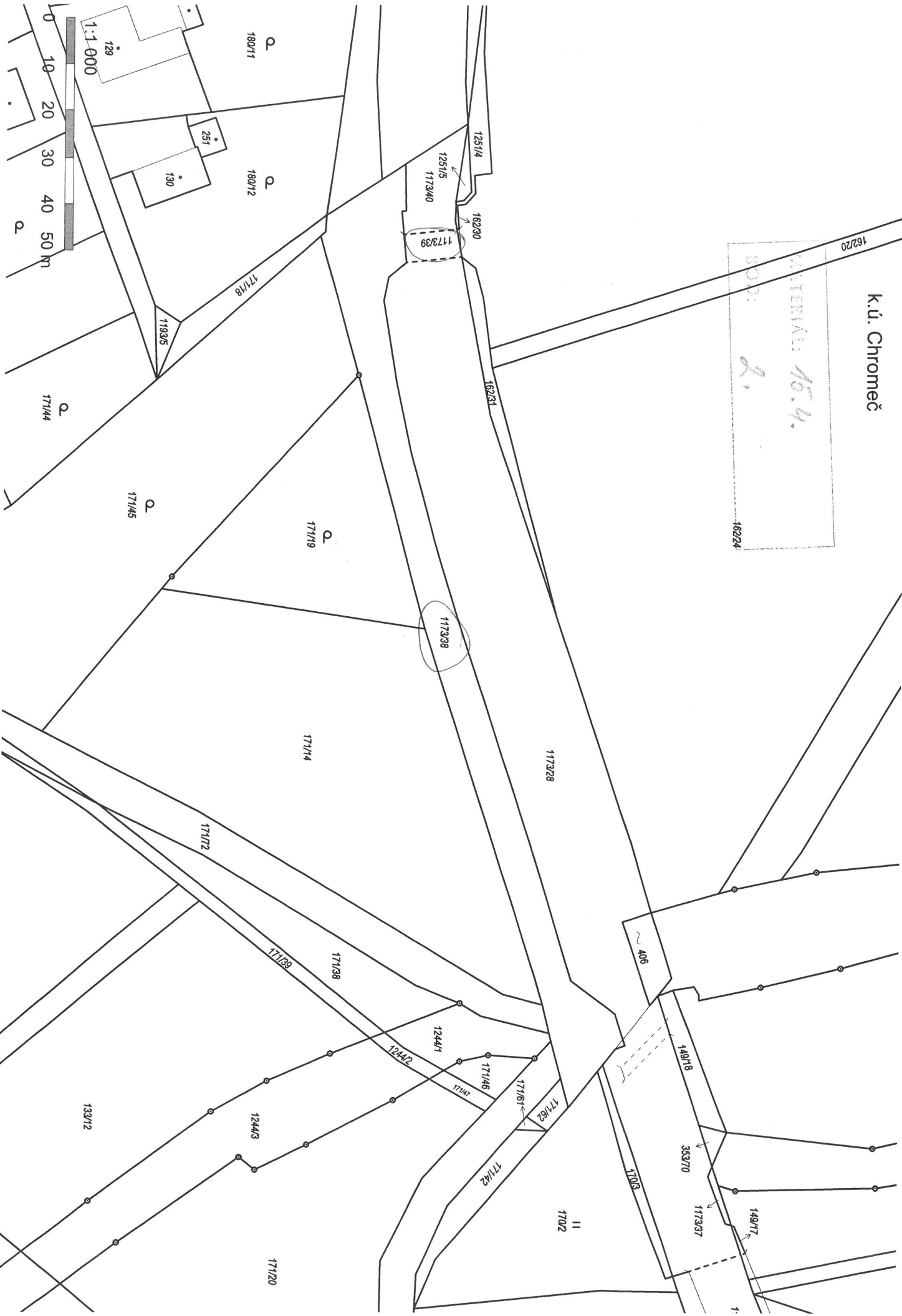
k.ú. Chromeč

MATERIÁL: 15.4.

SOČ: 2.

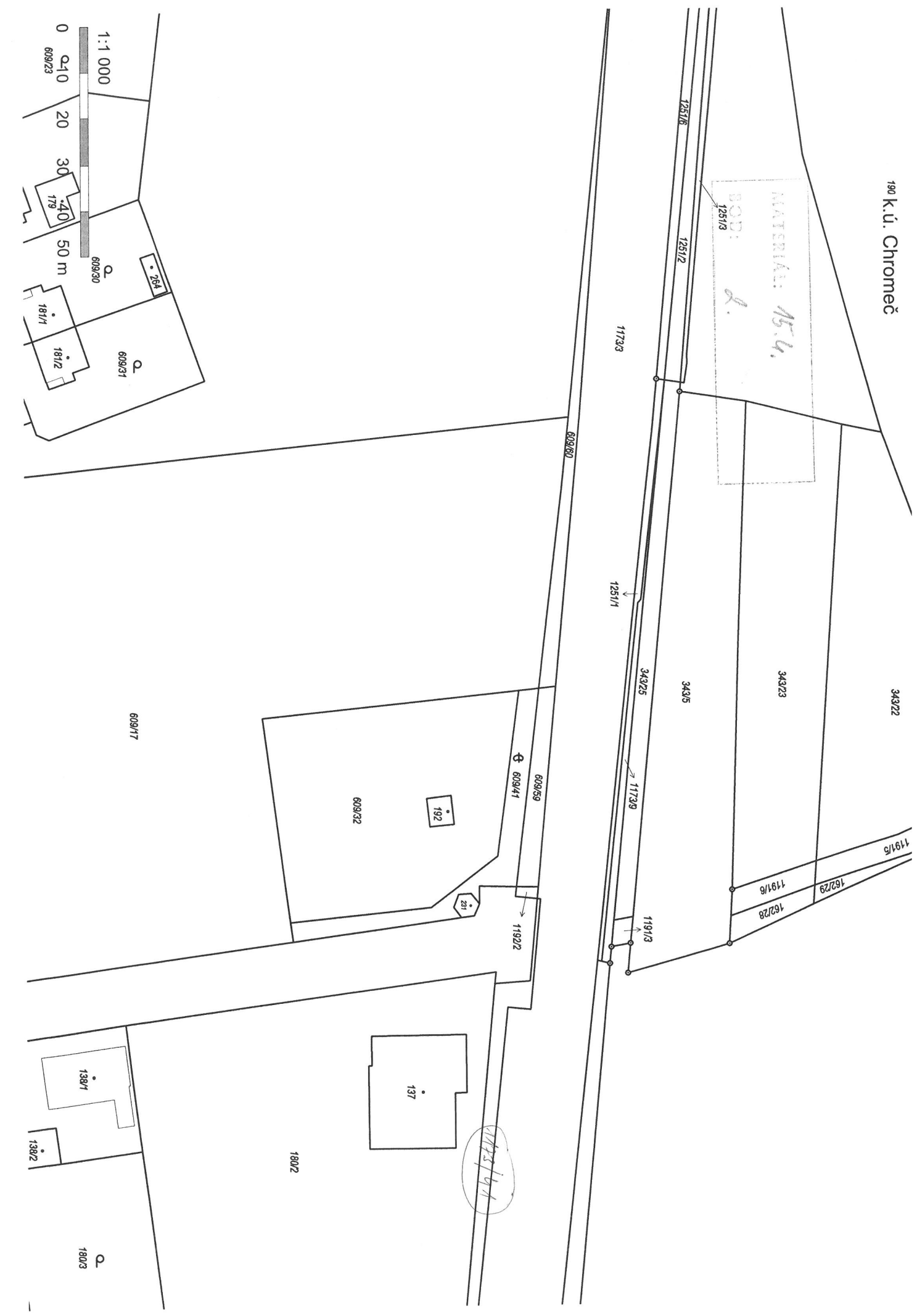
16224

16220



190 k.ú. Chromeč

MATERIÁL: 15.4.
BOD: 1251/3



K.ú. Chromeč

15.4.

590/21

590/11

608

1173/26

1250

590/12

1205/33

343/27

1173/27

343/26

05/32

343/16

1173/42

1173/1

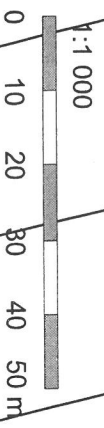
608/1

608/2

608/3

608/4

608/5



• 286

609/58

• 280

609/44

• 293