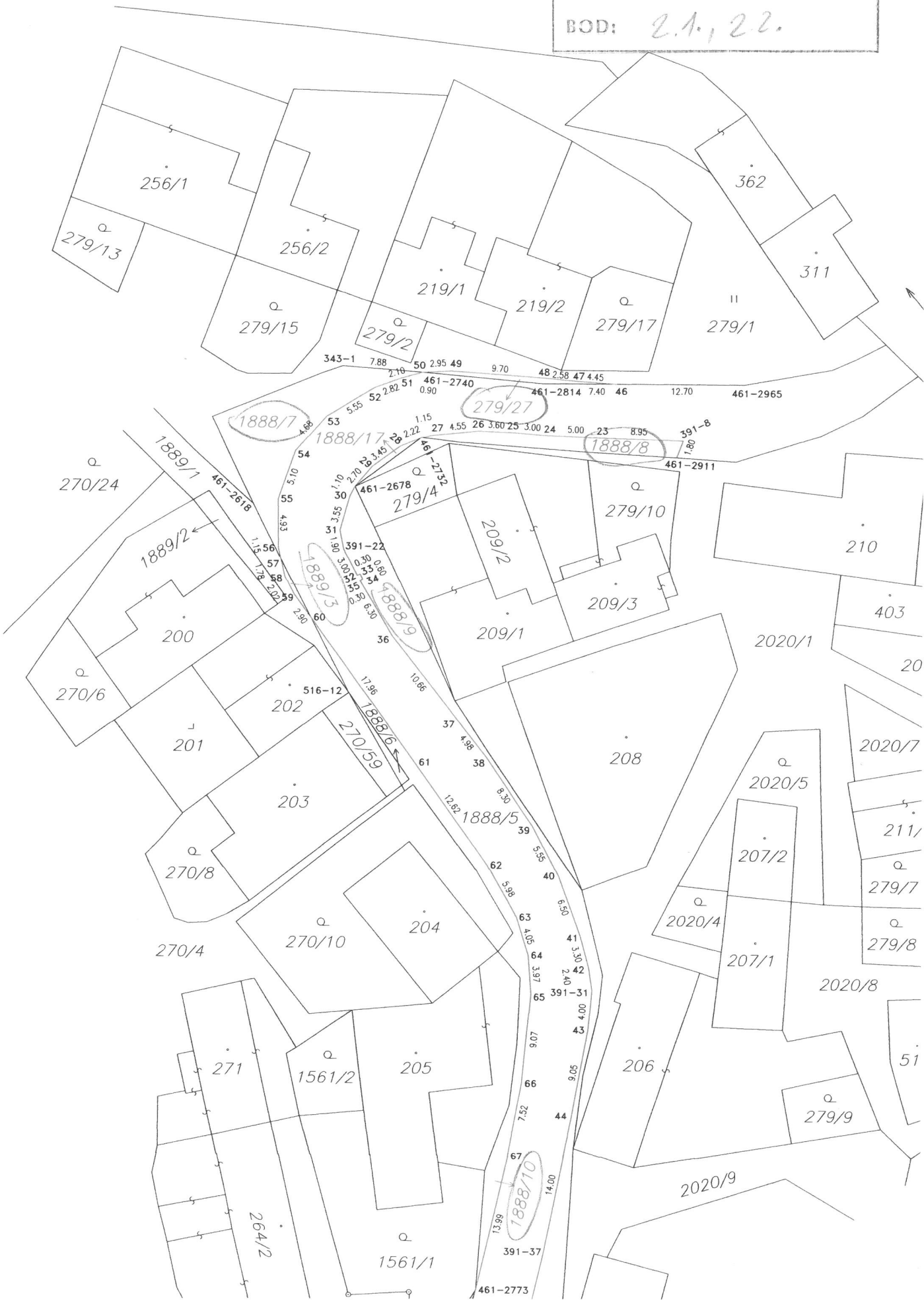


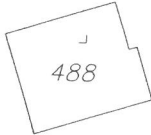
MATERIÁL: 9.5.
 BOD: 2.1.

K. M. ROZSTÁNÍ POD KOVĚM

MATERIÁL: 9.5.
 BOD: 2.1., 2.2.



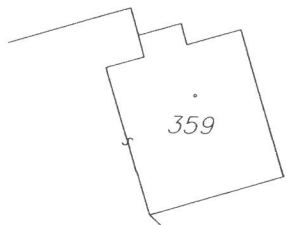
K.Ú. ROZTAHŮ POD KOVALEM



Q
270/31

MATERIÁL: 9.5
BOD: 2.1.

II
1555/3



461-2910

270/13

30.31

75

5.10

76

1.10

77

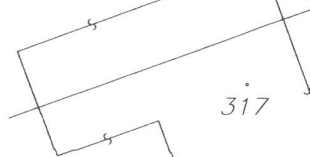
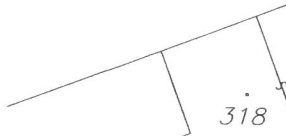
Q
270/30

12.20

78

1888/5

II
1555/1



13.05

79

Q
270/29

23.50

1888/3

K. U. ROZSTAVI POD KOVALEM

II
270/27

II
270/42

Q
270/15

II
270/16

221

J
196/1

II
270/55

II
270/44

513

342

Q
271/3

II
270/45

Q
271/2

Q
270/25

304

⊕
268/4

MATERIÁL: 9.5,
BOD: 2.1.

II
1555/6

Λ
1550

21.40

81

26.55

82

23.50

83

42.20

461-3478

391-63

0.96

244/4

1888/5

K u. ZOSTARI POD KOJÁLEM

MATERIÁL: 9.5.

DOB: 2.1.

260

2058

179

1940

462-2975

462-3017

175

2018/4

2018/61

2018/17

3/1

238

178

240

2018/19

190

176

224/1

2017

391-140
462-3204

1888/15

4

462-3116

650

462-3233

1888/14

2018/18

17.

6

6

30.95

5.580

18

18.20

35.30

13.02

4

19

30.556

20

3

10.17

20.24

58.4

2

1.50

4.00

1

14.70

21

2.78

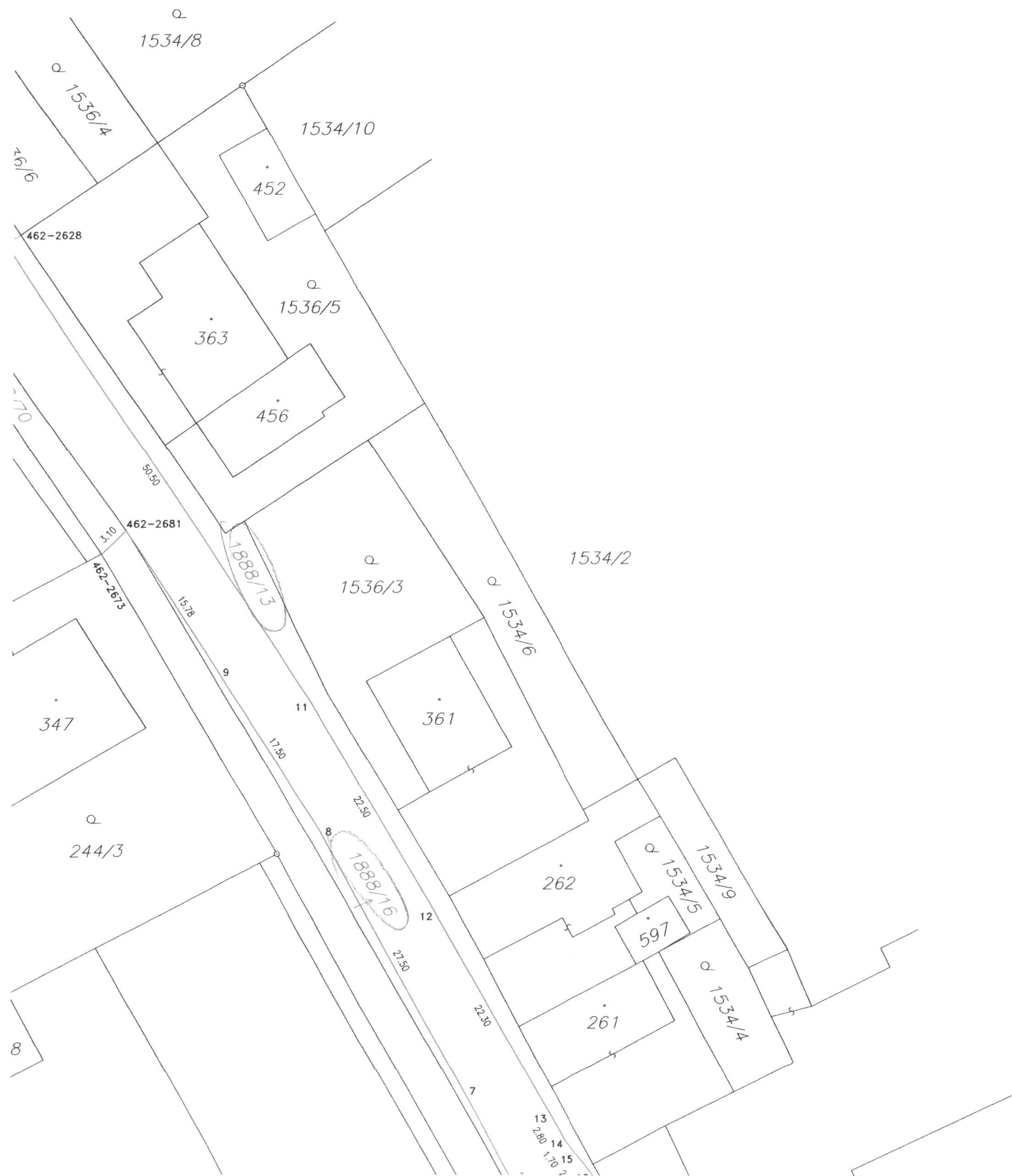
22

1.16

6

K U. DOXTANI POD KOJALOM

MATERIÁL: 9.5.
BOD: 2.1.

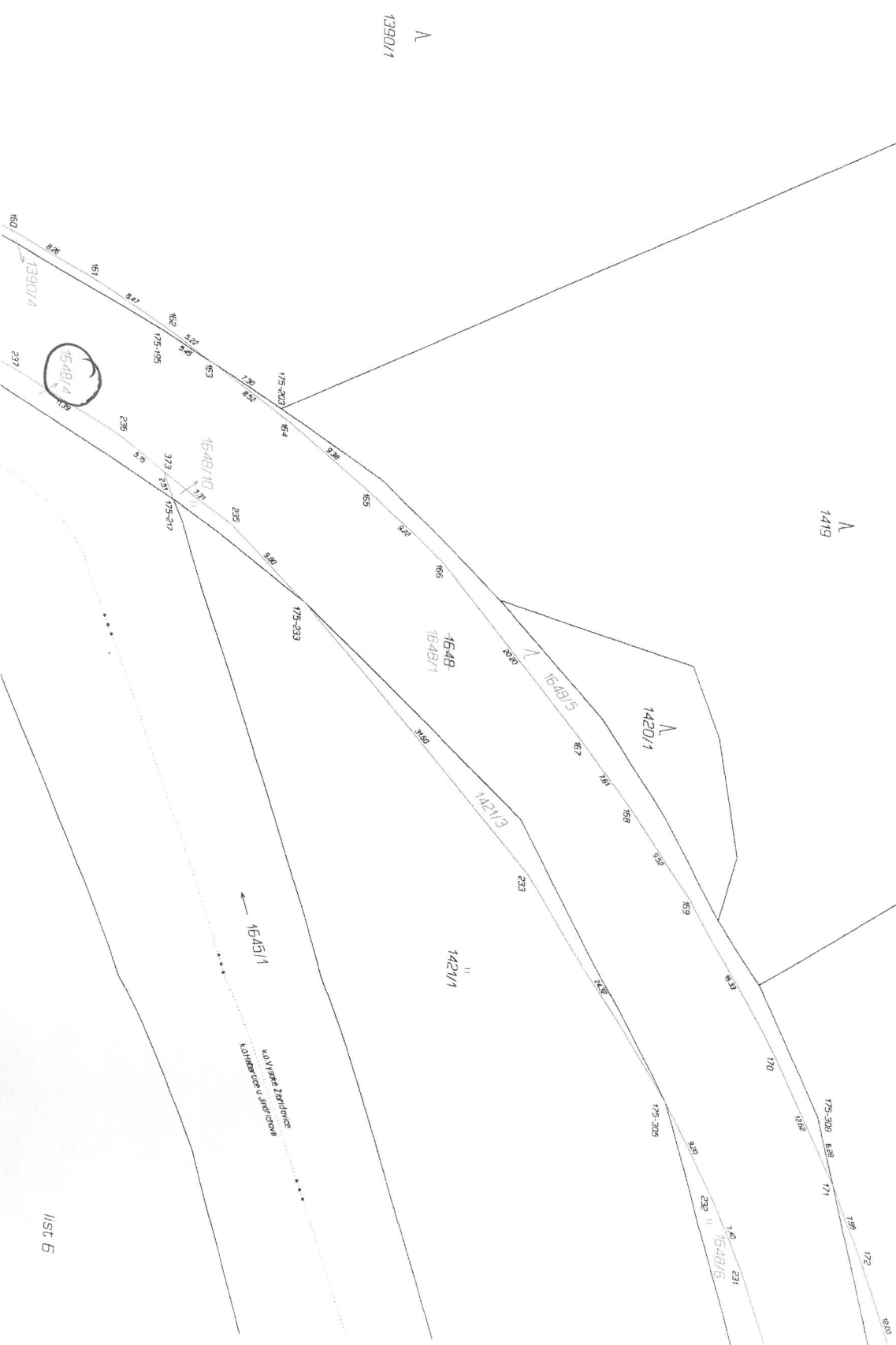


Lis

ka. výhled Zibřidovice

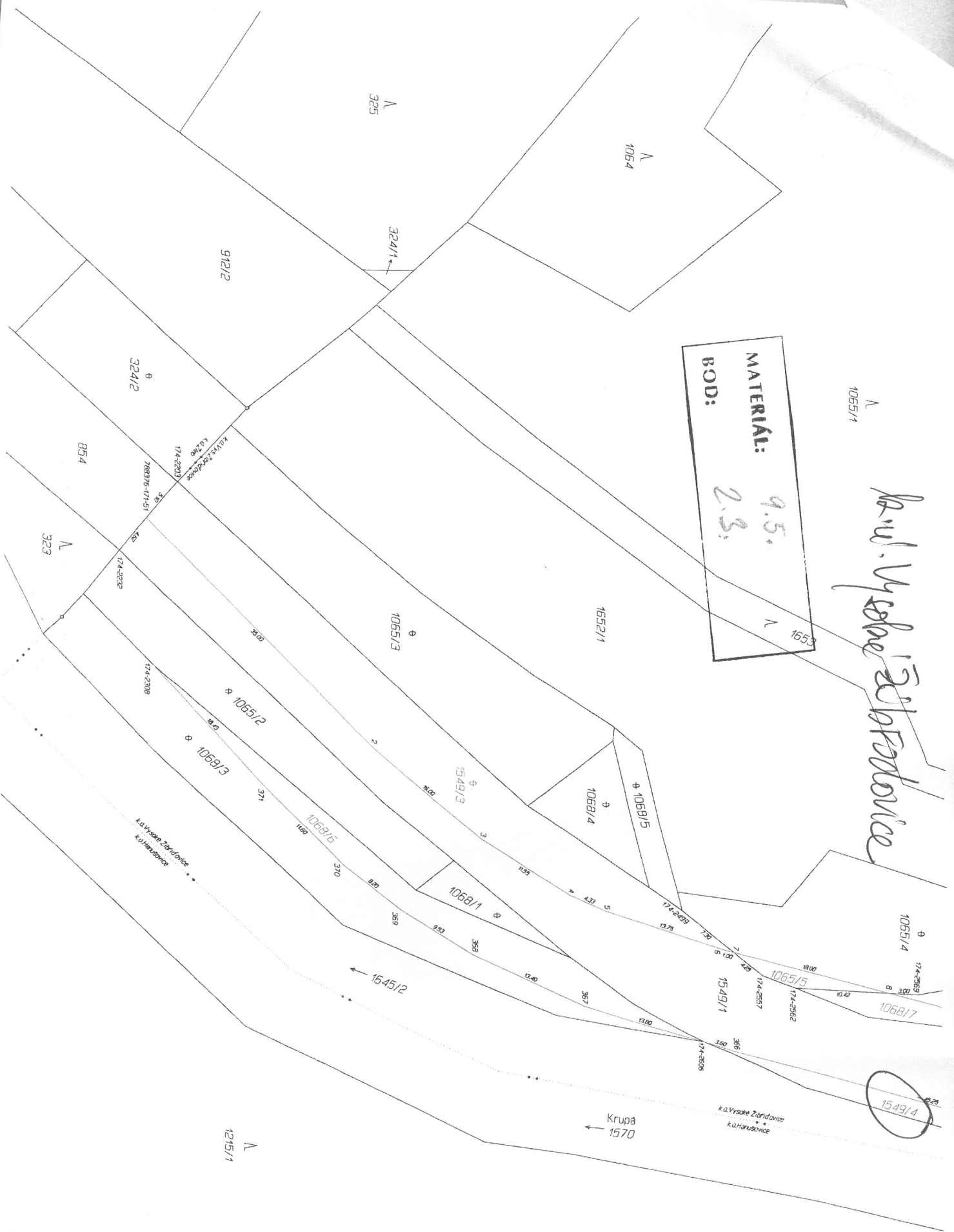
MATERIÁL: 9.5.
BOD: 2.2.

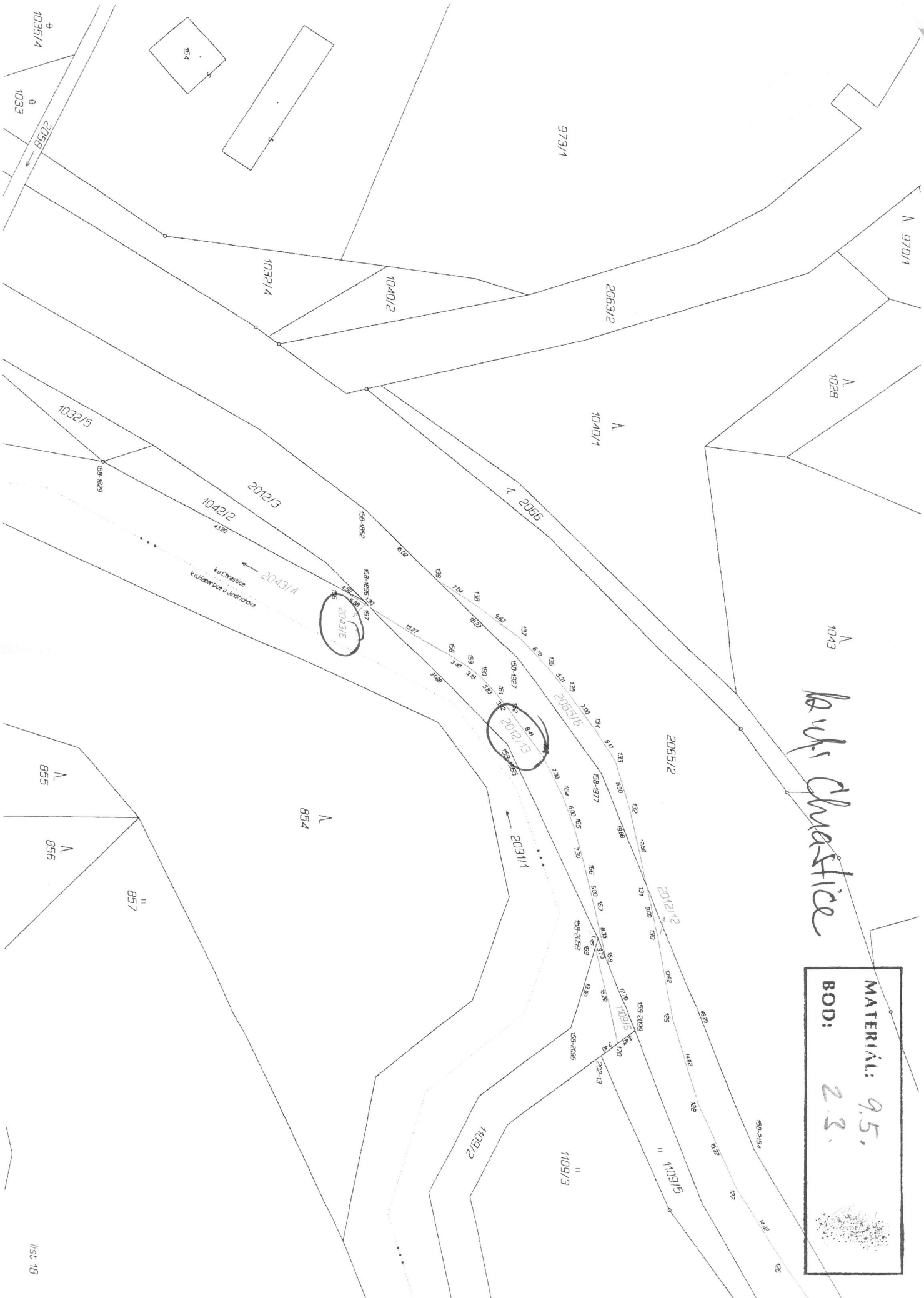
4422-
1422/1



Kauč. Vyškové Žitostavice

MATERIAL: 9.5
BOD: 2.3





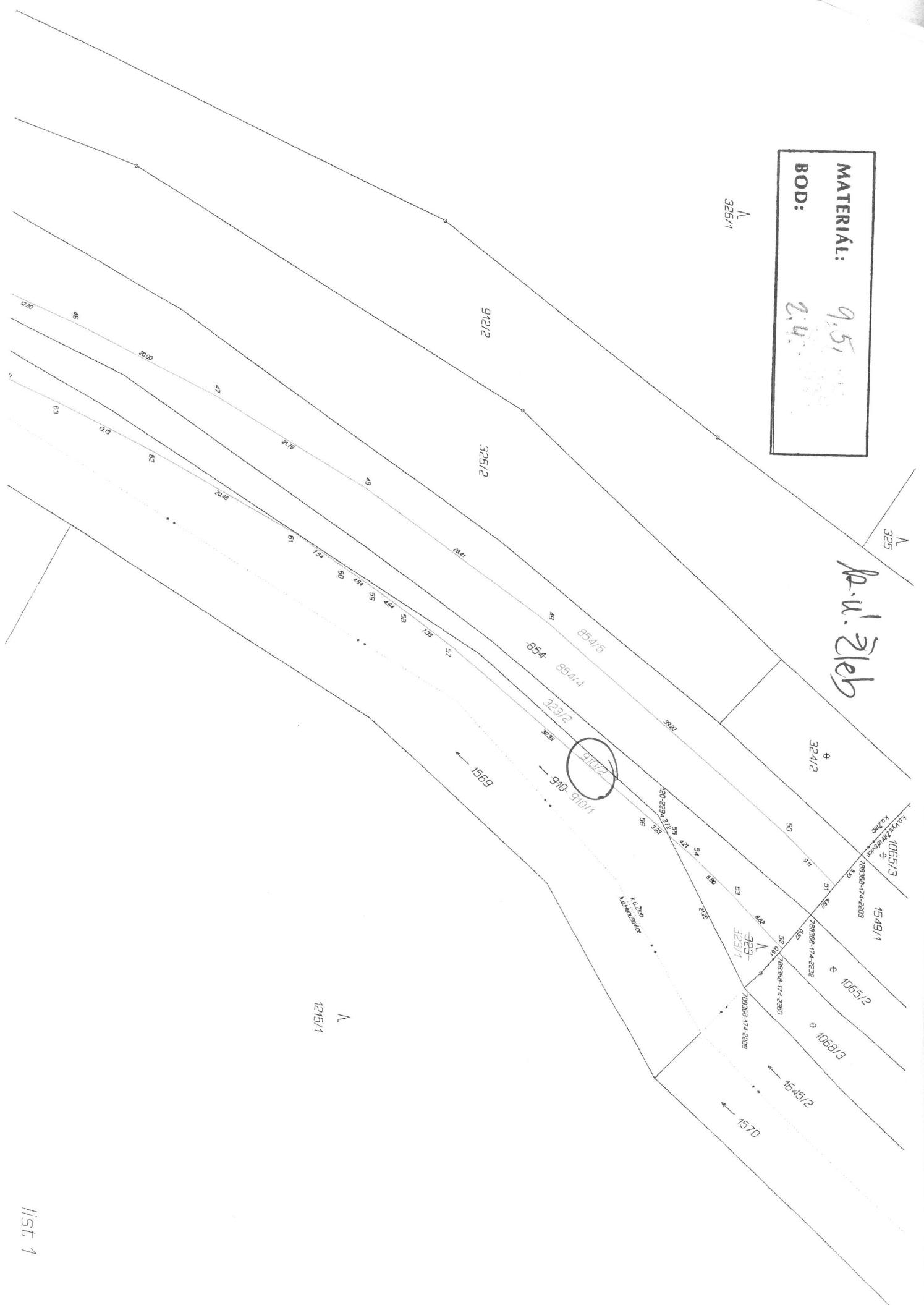
MATERIAL: 9.5.
 BOD: 2.3.

MATERIAL: 9.5
BOD: 2.4

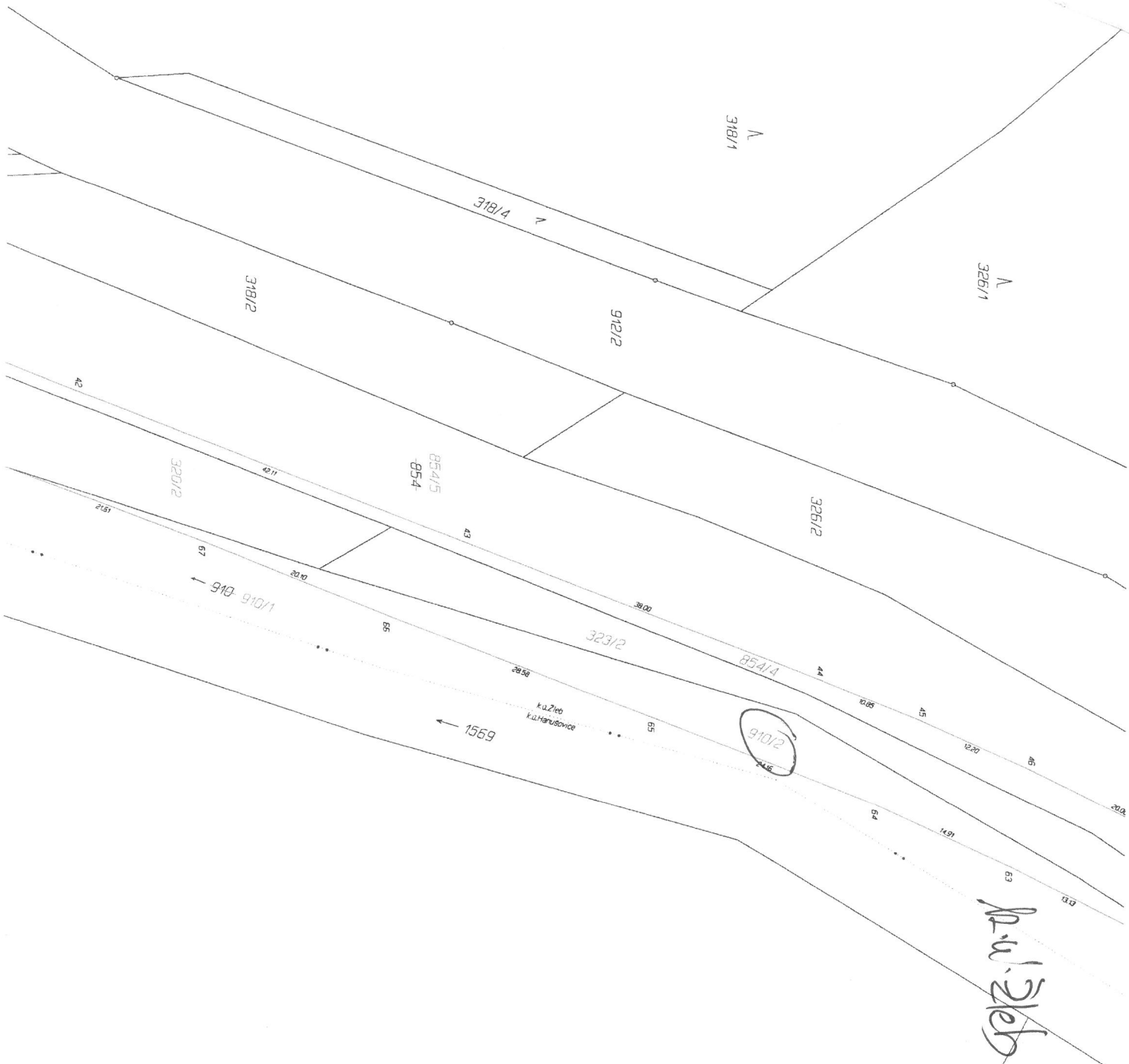
N
326/1

N
325

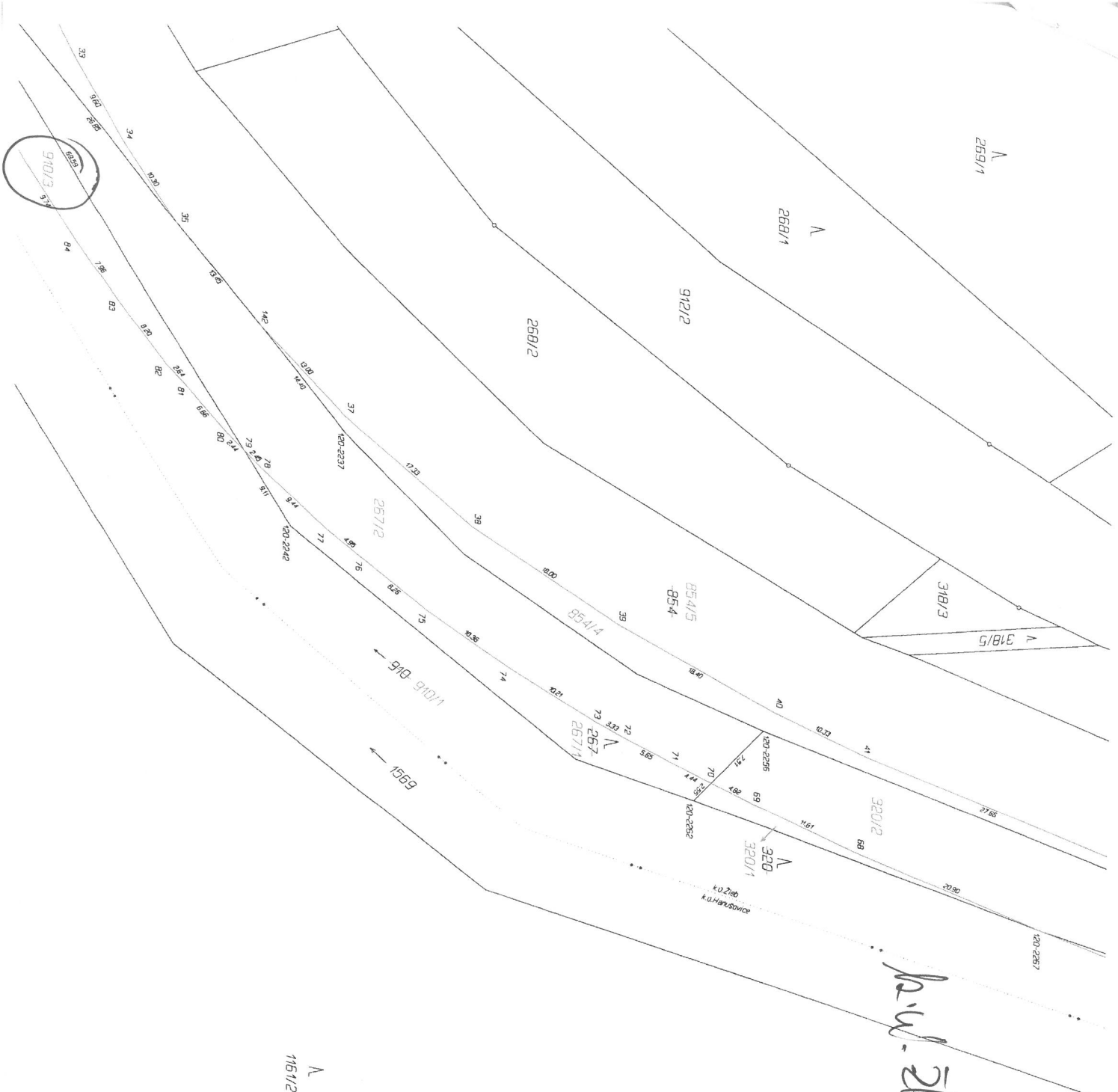
R.U. 3/12



N
12/5/1



MATERIÁL: 0.5.
 BOD: 24.



269/1

268/1

268/2

912/2

318/3

318/5

854/5
-854

854/4

267/2

320/2

320/1

320

100-2285
100-2286

100-2257

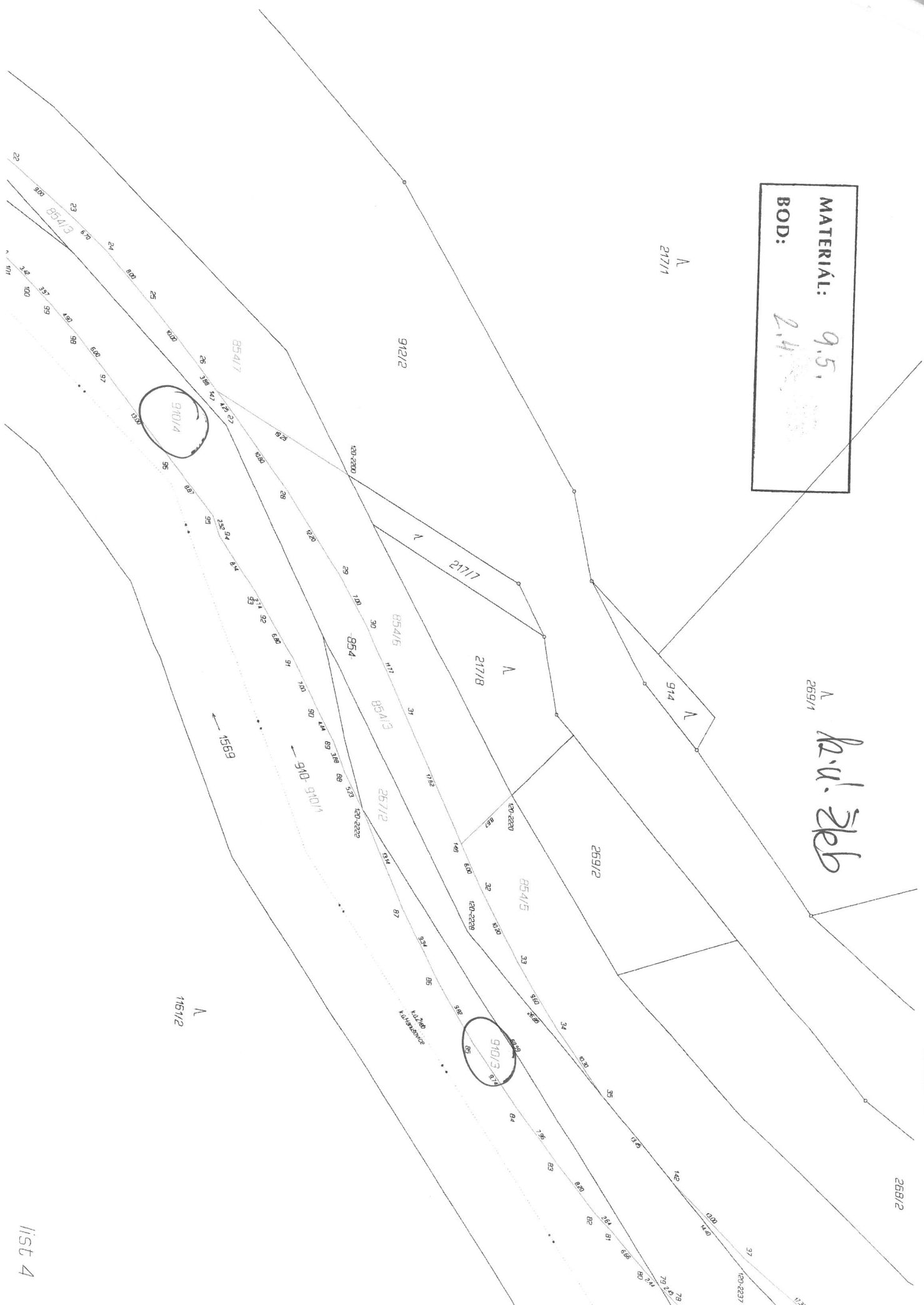
K.W. Zleb

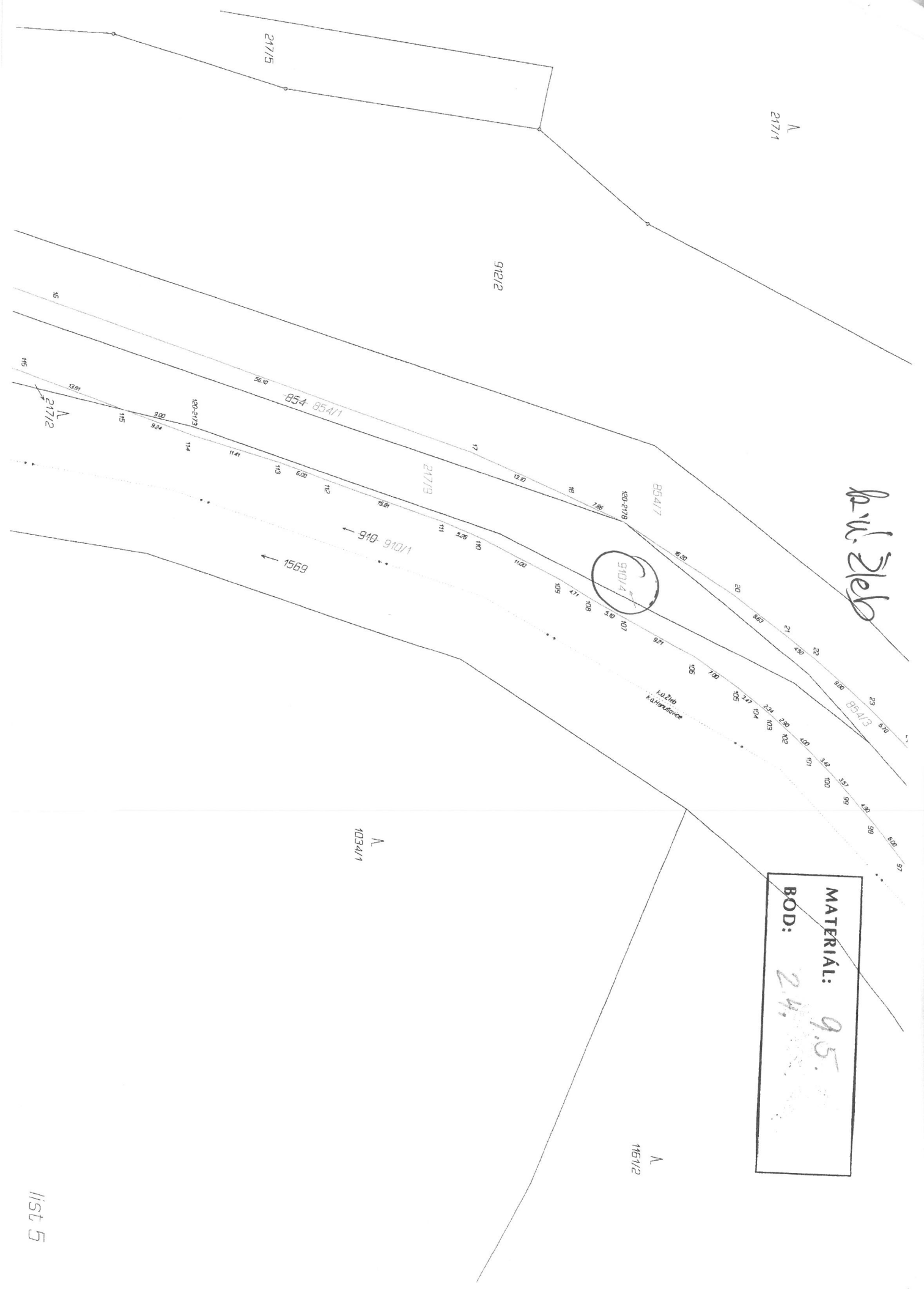
MATERIAL: 9.5
BOD: 2.4

1151/2

MATERIAL: 9.5.
BOD: 2.4.

269/1
K.v. 266





K.W. Zlep

MATERIÁL: 9.5
BOD: 2.4

N
217/1

912/2

217/5

854-854/1

217/9

854/7

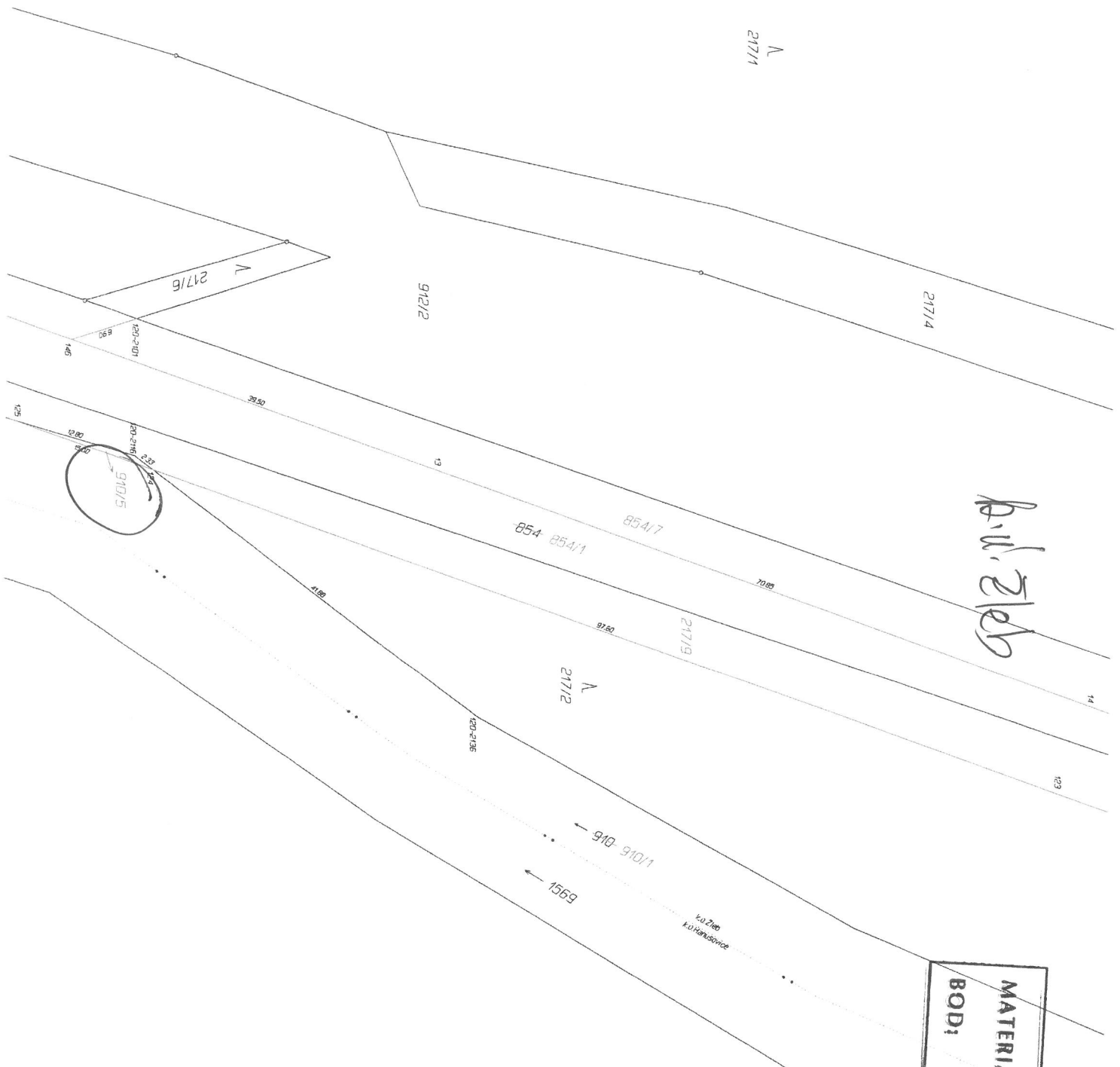
910/4

854/3

N
1034/1

N
1161/2

910-910/1
1569



A. W. Z. J. J.

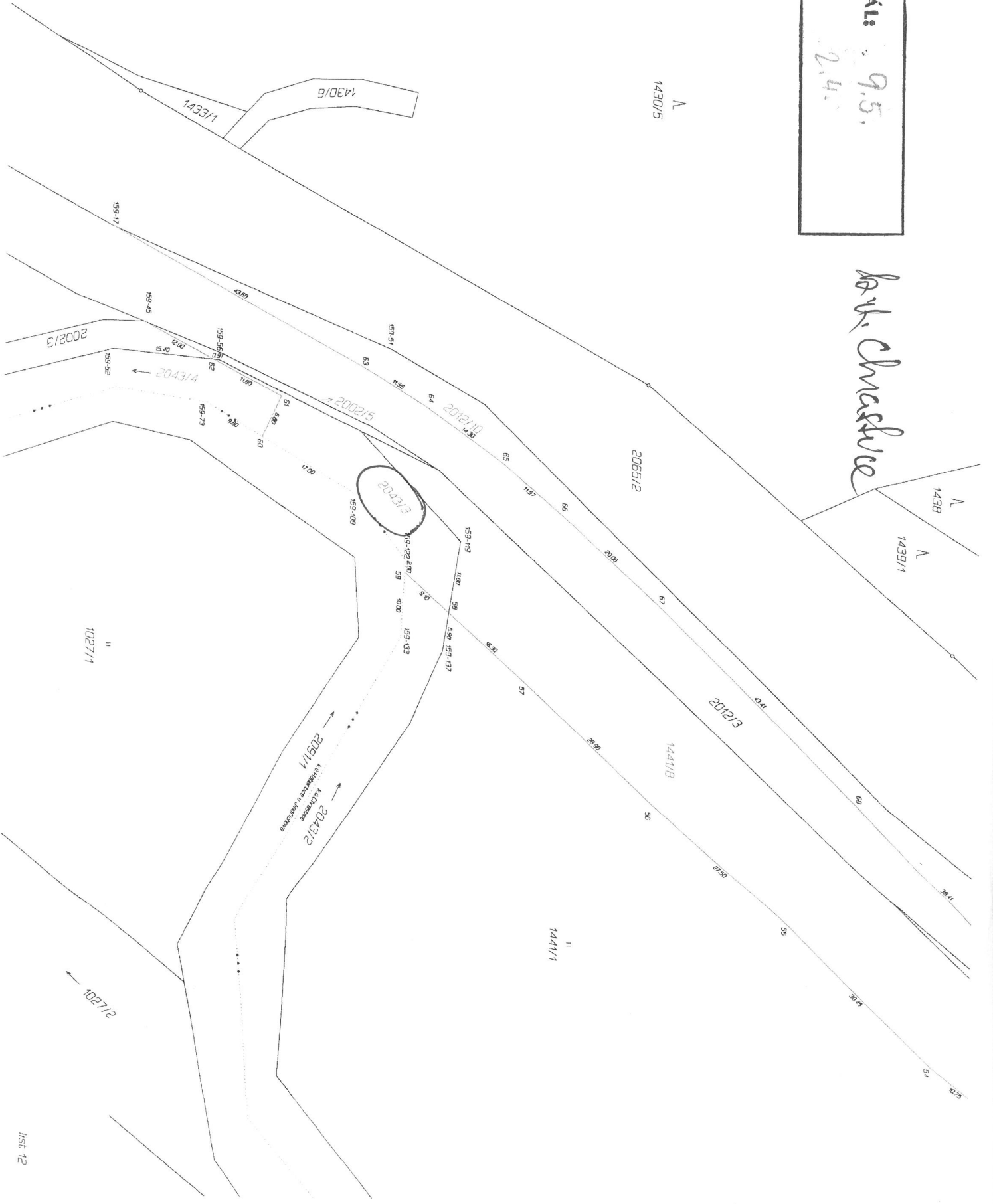
MATERIAL: 9.5
 BOD: 24

1034/1

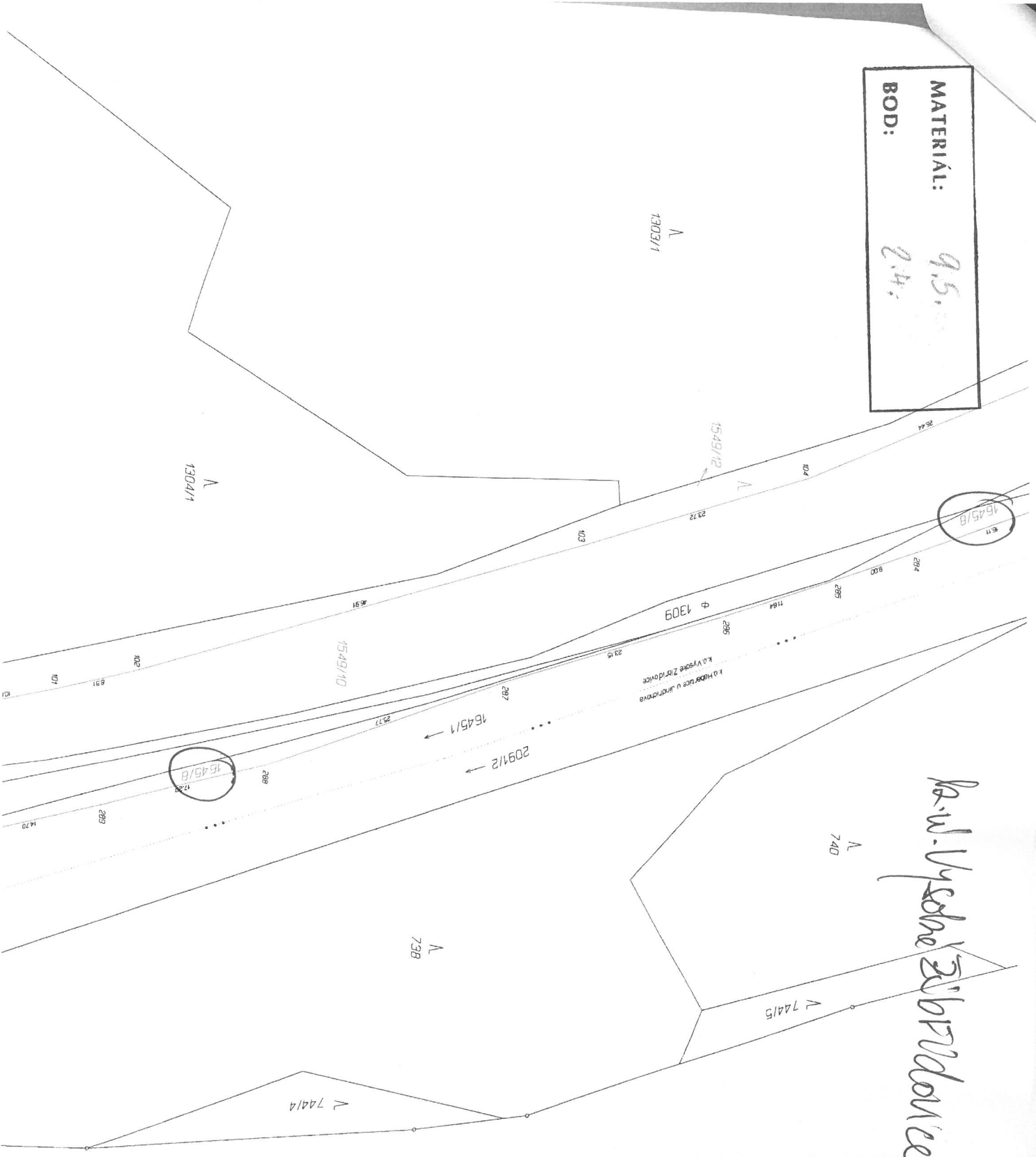
MATERIÁL:
BOD:

9.5,
2.4.

Bank Chrestvice



MATERIÁL: 9.5.2012
BOD: 2.4.



Ka.m. Vyššie Zškolníckove

2055/2

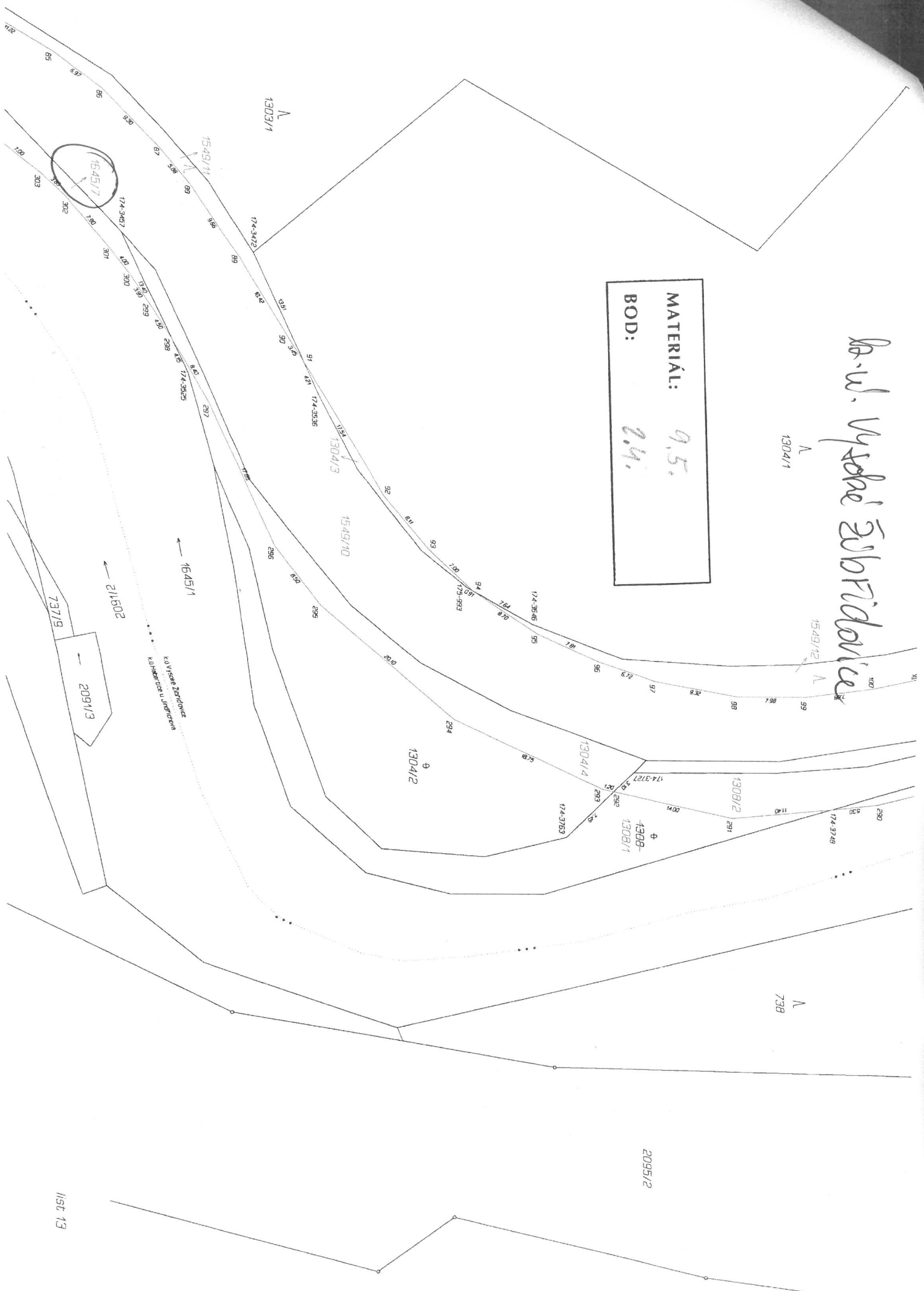
Ro. w. Vyšoké Žibřidovice

1304/1

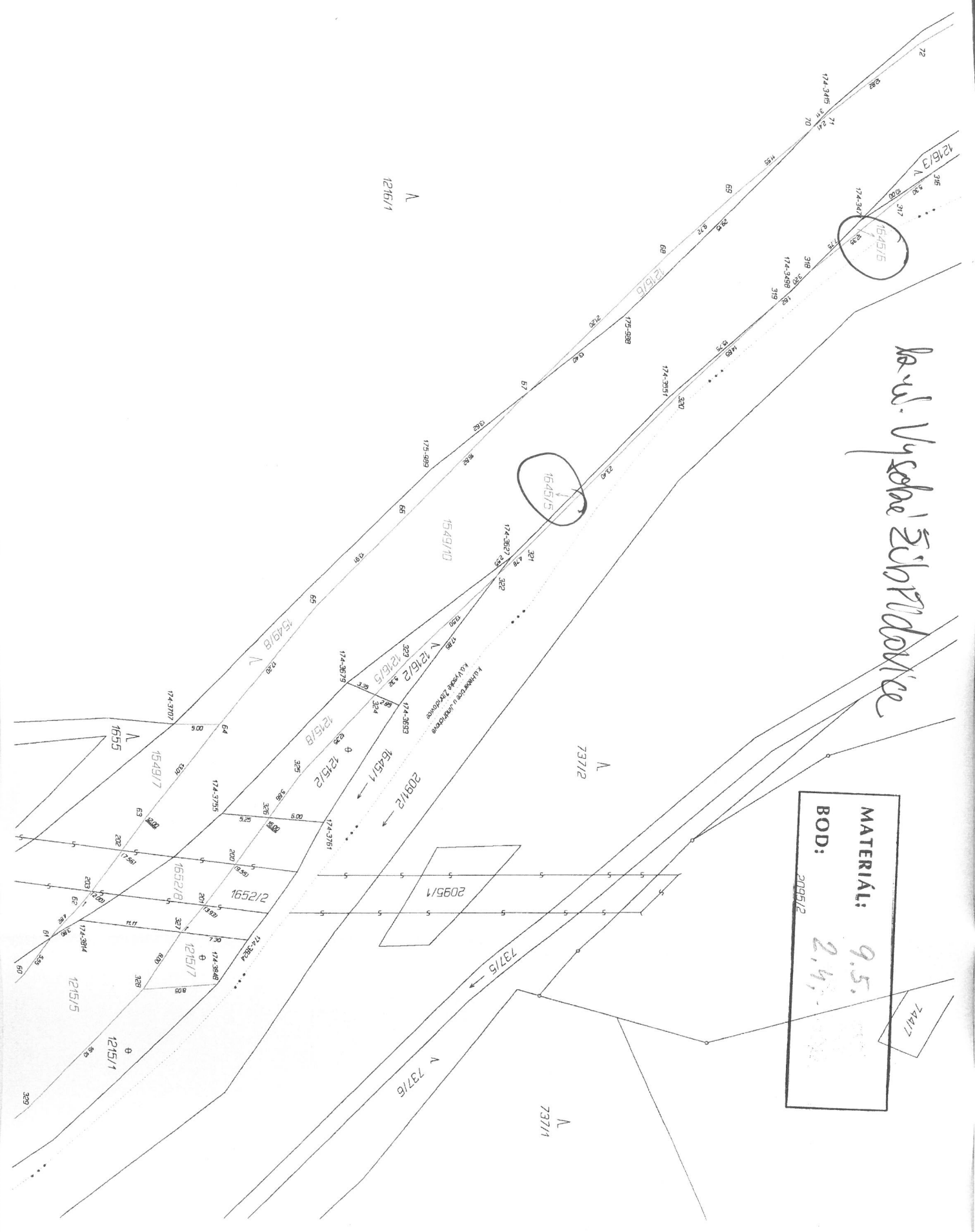
1549/12

739

MATERIÁL: 9,5.
BOD: 2,4.



la-v. Vyšehradské



MATERIÁL:	9.5.
BOD:	2.4.
	2095/2

744/17

Bank Vyšebrodice

1655

MATERIÁL: 9.5.
 BOD: 2.4.



Br. u. Vysoké Žitčkové

MATERIÁL: 9.5.
BOD: 2.4.

N
1149/1

1652/1

1549/5

1549/1

1645/4

1645/1

2091/2

k.ú. Vysoké Žitčkové
k.ú. Habarůvce u Jindřichova

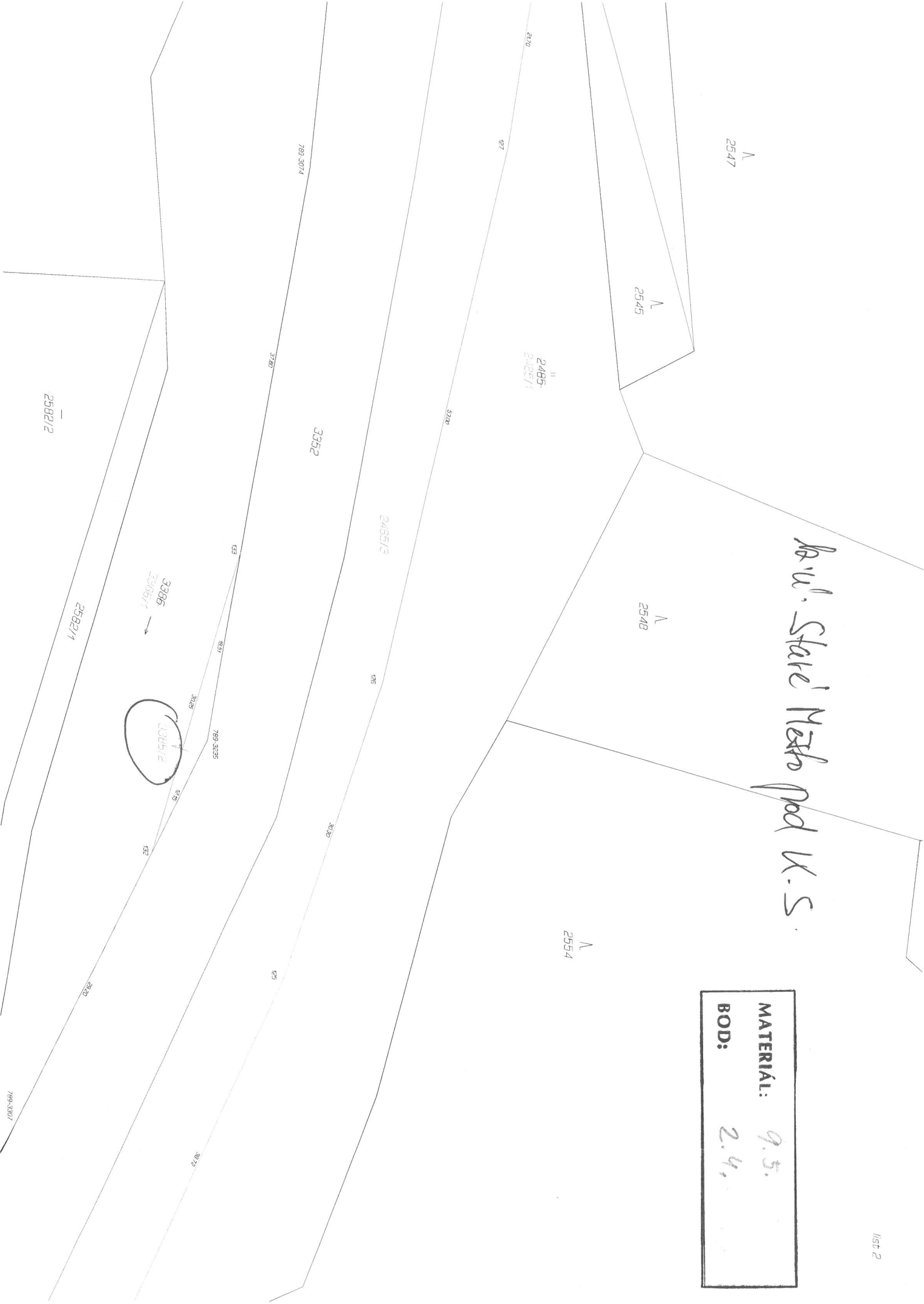
N
736

N
737/2

2417

Nov. Staré Město pod K.S.

MATERIÁL:	9.5.
BOD:	2.4.



2488/1

2493/3

2490

730-442

730-407

422

112

425

383

2090/2

111

730-555

3352

420

2590
2090/4

11

2482/4

2482/2

ka ul. Staré Město pod V.S.

2482/1

MATERIÁL:
BOD:

9.5.
2.9.

2480

2479

2470/1

2472/2

730-594

107

200

440

105

730-592

108

109

108

109

108

109

108

109

108

109

108

109

108

109

108

2482/6

2473/2

2590-570

107

140

980

570

730-559

109

108

109

108

109

108

109

108

109

108

109

108

109

108

109

3386

3093/4

2424/2

11

2420