

394/16

394/17

394/12

MATERIA: 10.2.  
 BOD: 1.1.1, 3.1.3.2.

*Kul. Ophobany*

394/18

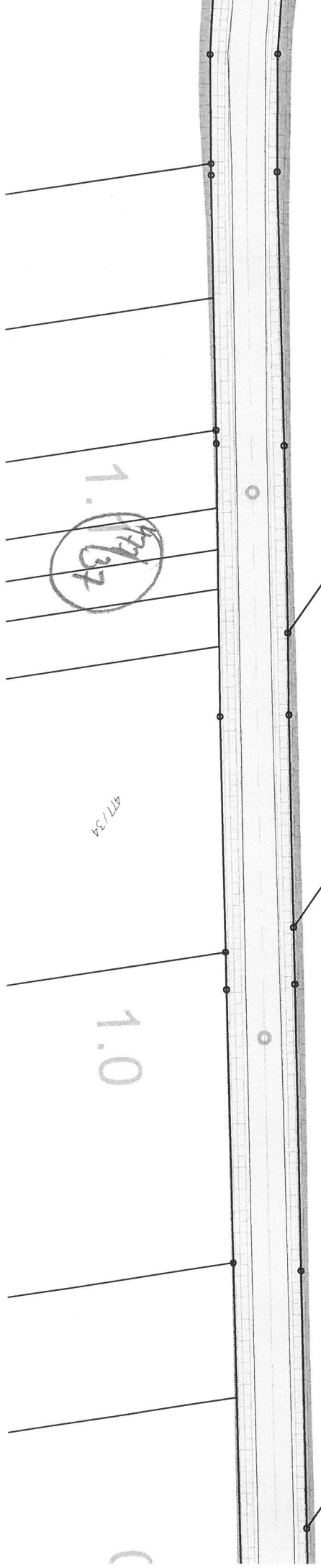
477/34

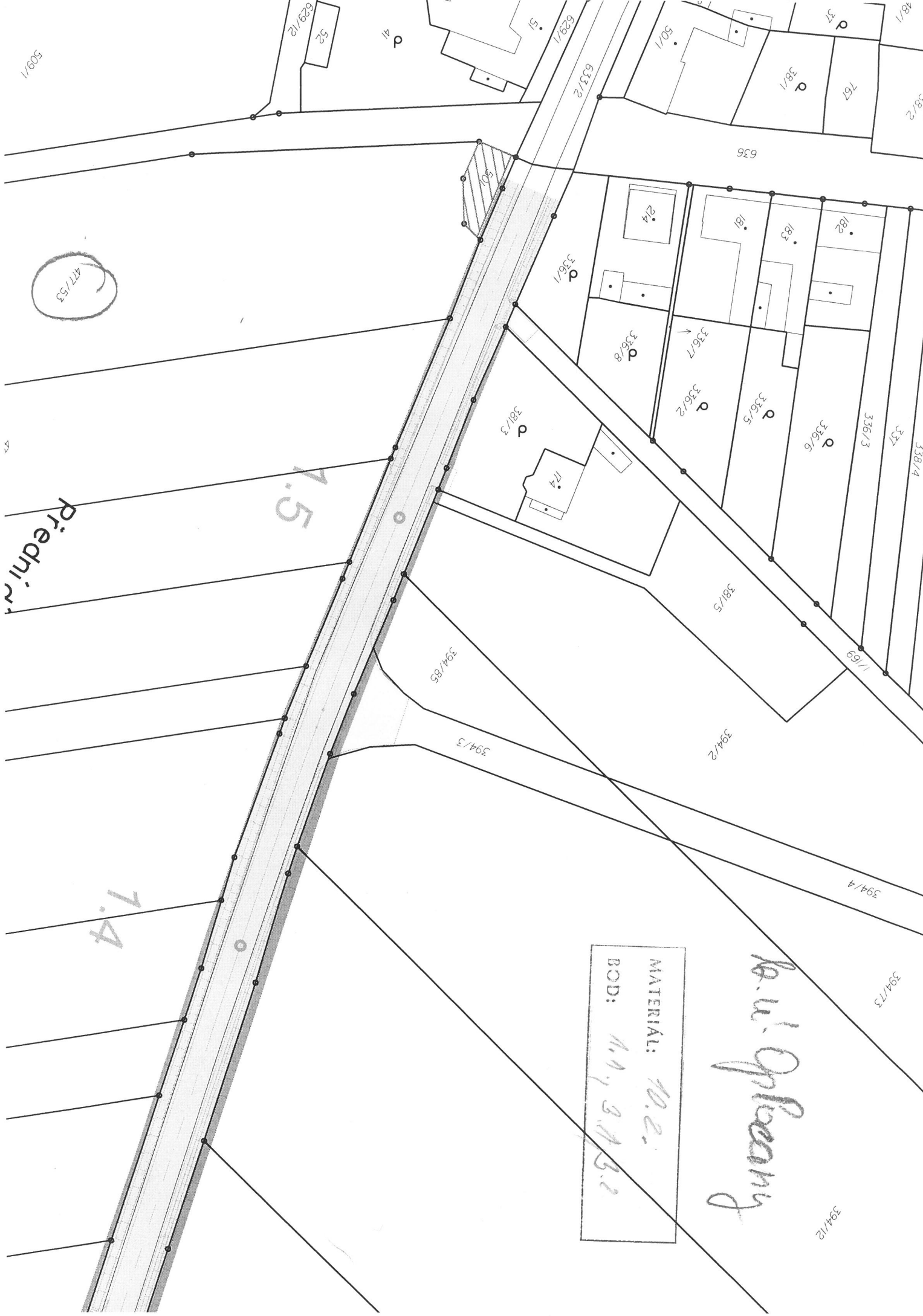
394/19

1.0

394/21

394/20





MATERIAL: 10.2.  
BOD: 1.1.1.3.1.3.1

*K. u. l. Opřevazny*

4.5

7.4

Přední

477/53

509/1

629/12

41

51

629/1

633/2

50/1

37

38/1

767

48/1

38/2

636

214

181

183

182

336/1

336/8

336/7

336/2

336/5

336/6

336/3

337

338/4

381/3

174

381/5

1/69

394/85

394/3

394/2

394/4

394/73

394/12

*Le. v. Optics*

394/26

394/25

394/24

MATERIAL: 10.2.  
394/23  
D.D: 1.2, 3.3.

394/64

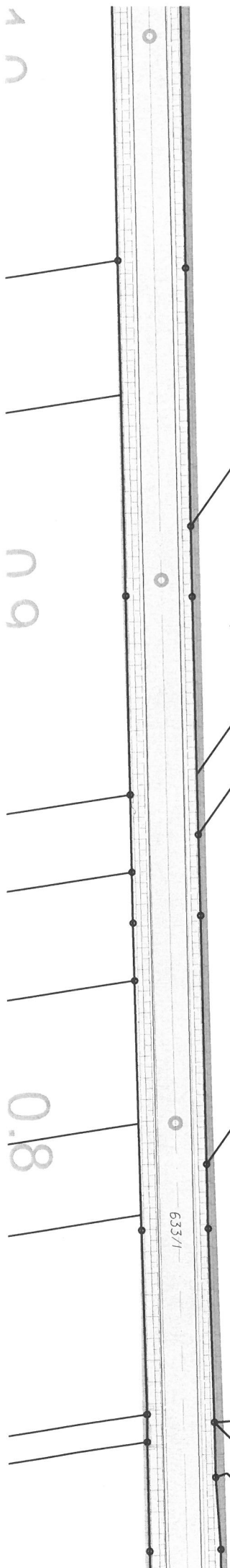
394/22

394/20

394/21

394/19

633/1



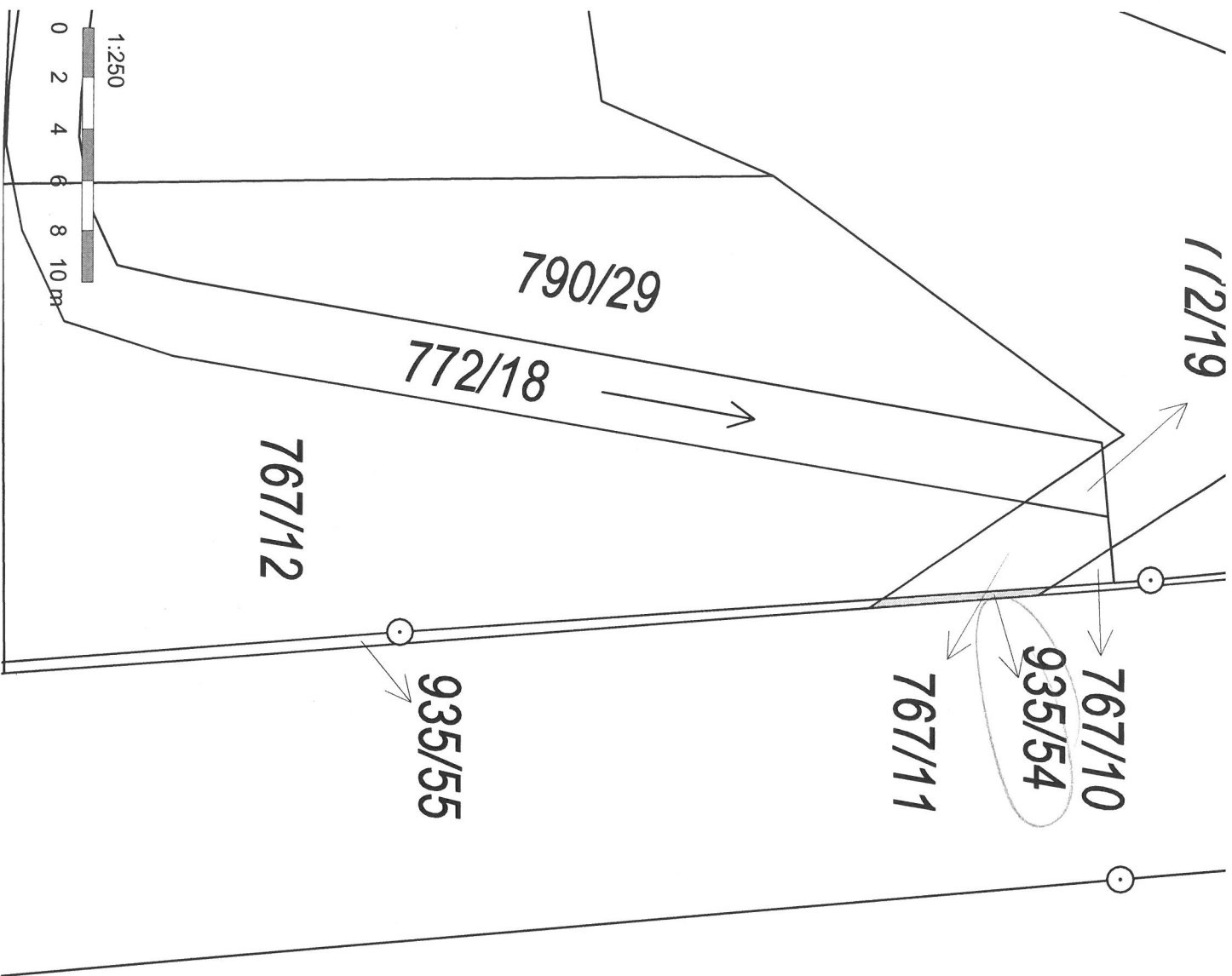
K.ú. Staré Město pod Králickým Sněžníkem

MATERIÁL: 10.2.  
DOD: 1.3.13.4.



4351 : 1 000

0 10 20 30 40 50 m



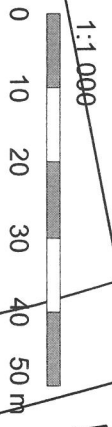
*E. J. LUKA*

MATERIAL: 10.2.  
 BOD: 2.7.

L. W. B. Bee

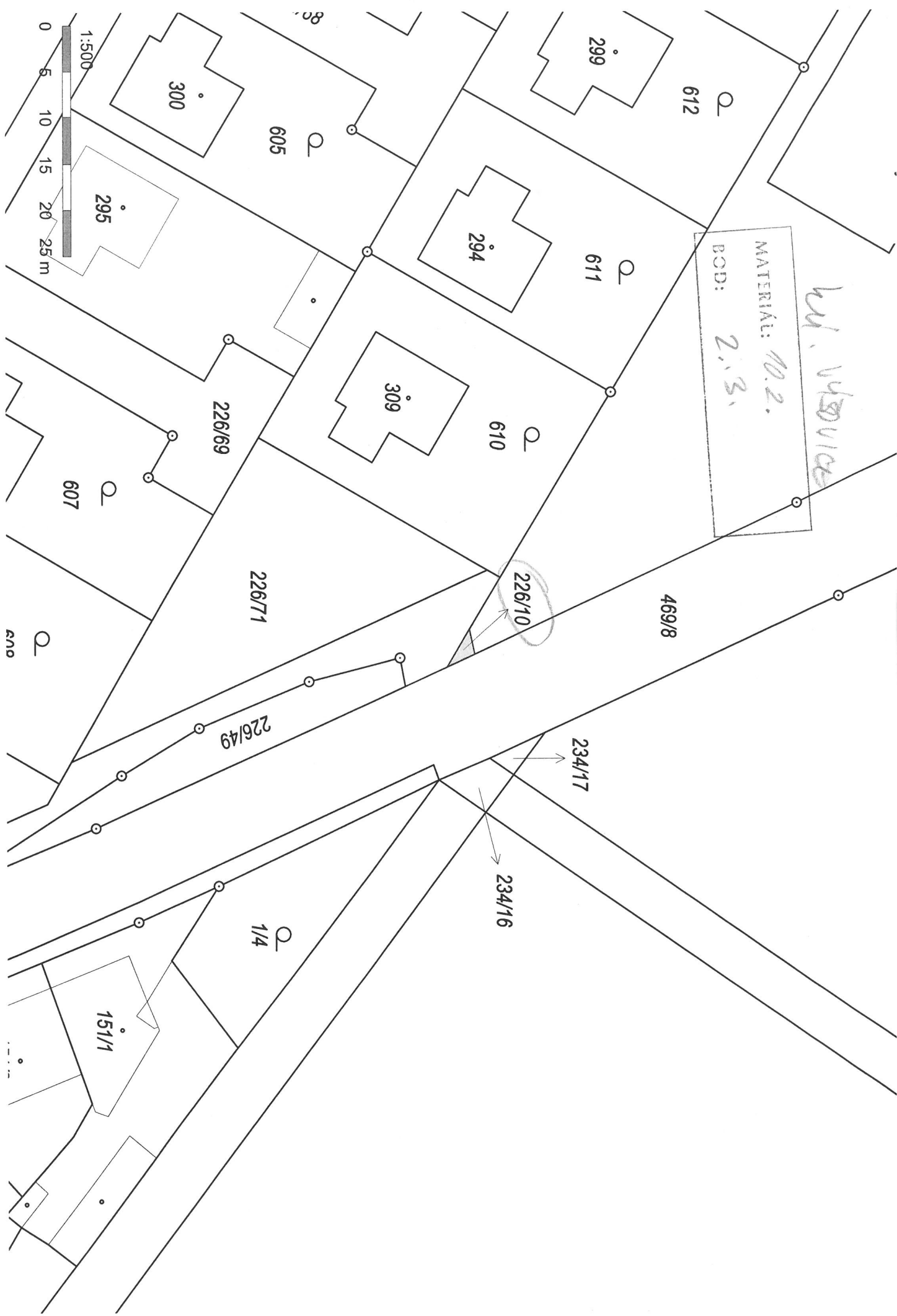
MAIN: 10.2.

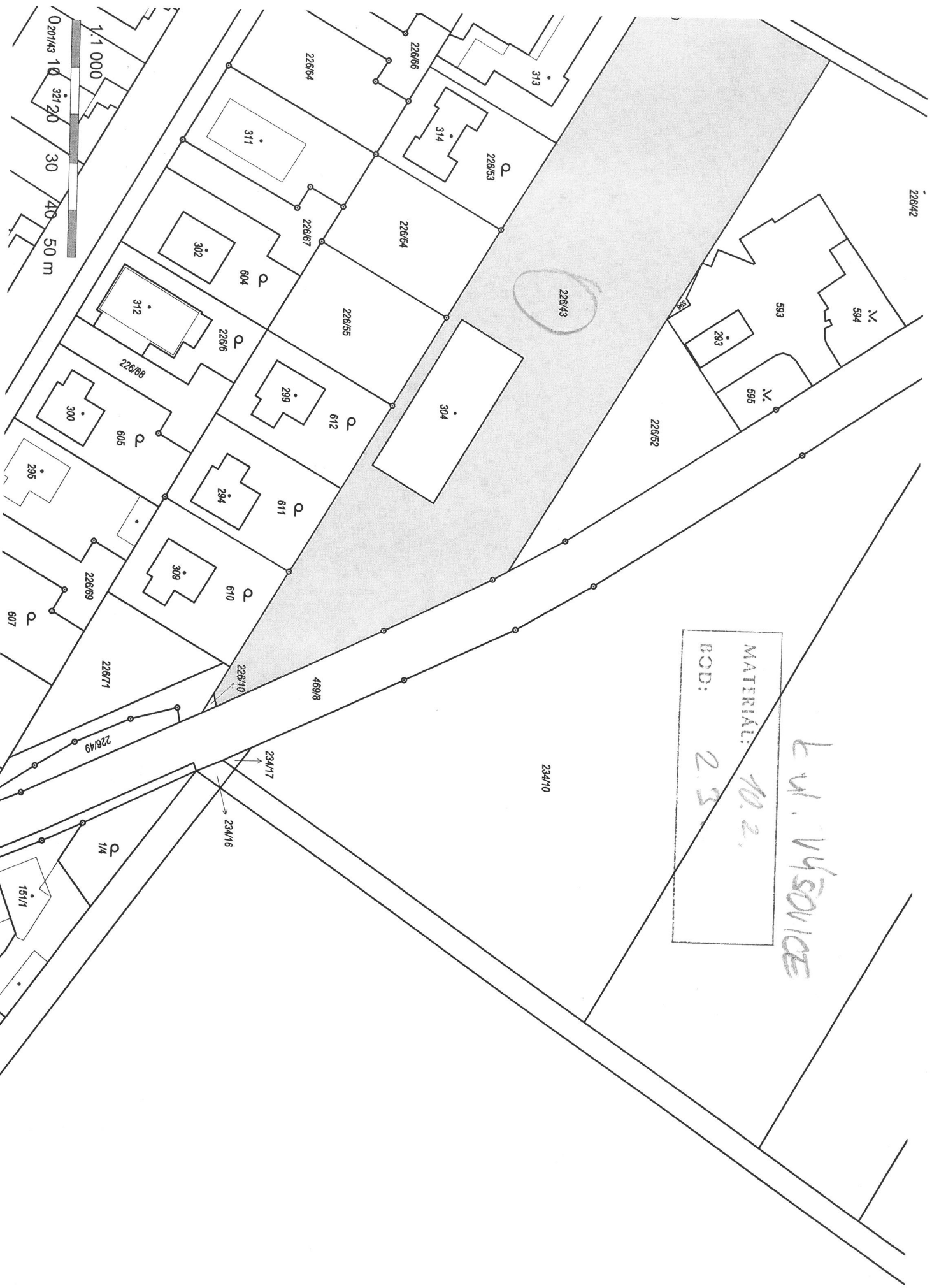
B.S.D.



*bu. v. 150 v. 100*

MATERIA: 10.2.  
BCD: 2.3.





MATERIÁL: 10.2.  
BOD: 2.3.

*L. V. V. S. O. V. I. C. E.*



533

3694

3695

3710/4

3710/11

3696/2

3697/2

3710/5

MATERIAL: 10.2.  
BOD: 2.4.  
*bu. Peru*

3710/6

3710/1

3741/22

3741/20

3741/19

3741/18

3741/21

3741/46

3741/45

3741/17

3741/5

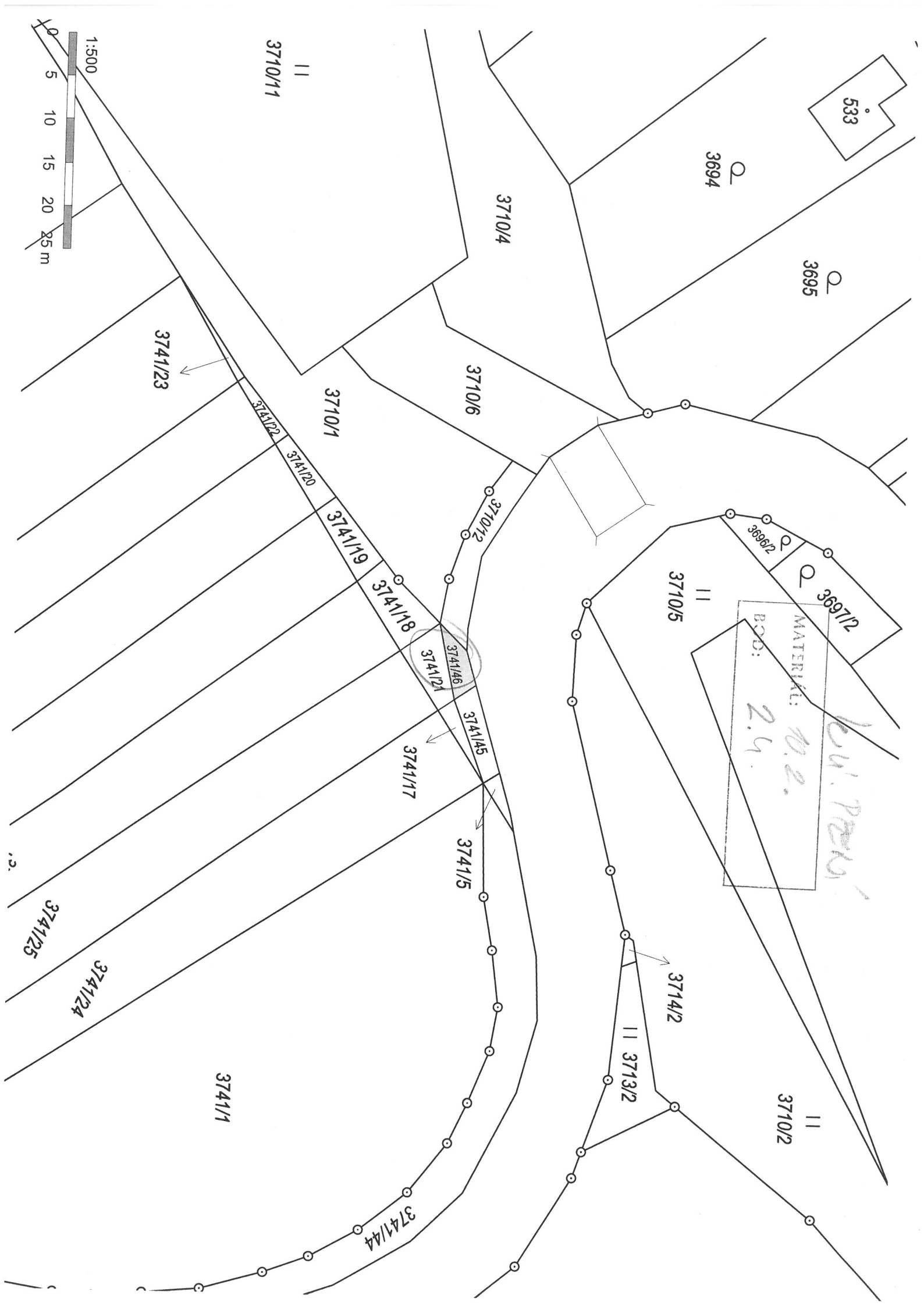
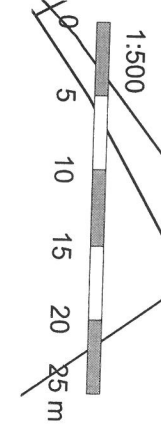
3714/2

3713/2

3710/2

3741/1

3741/44



k.ú. Mořice

MATERIÁL: 10.2.

POS: 2.5.

6829/2

5294

10427

6833/2

1042/6

1042/5

1042/4

1042/3

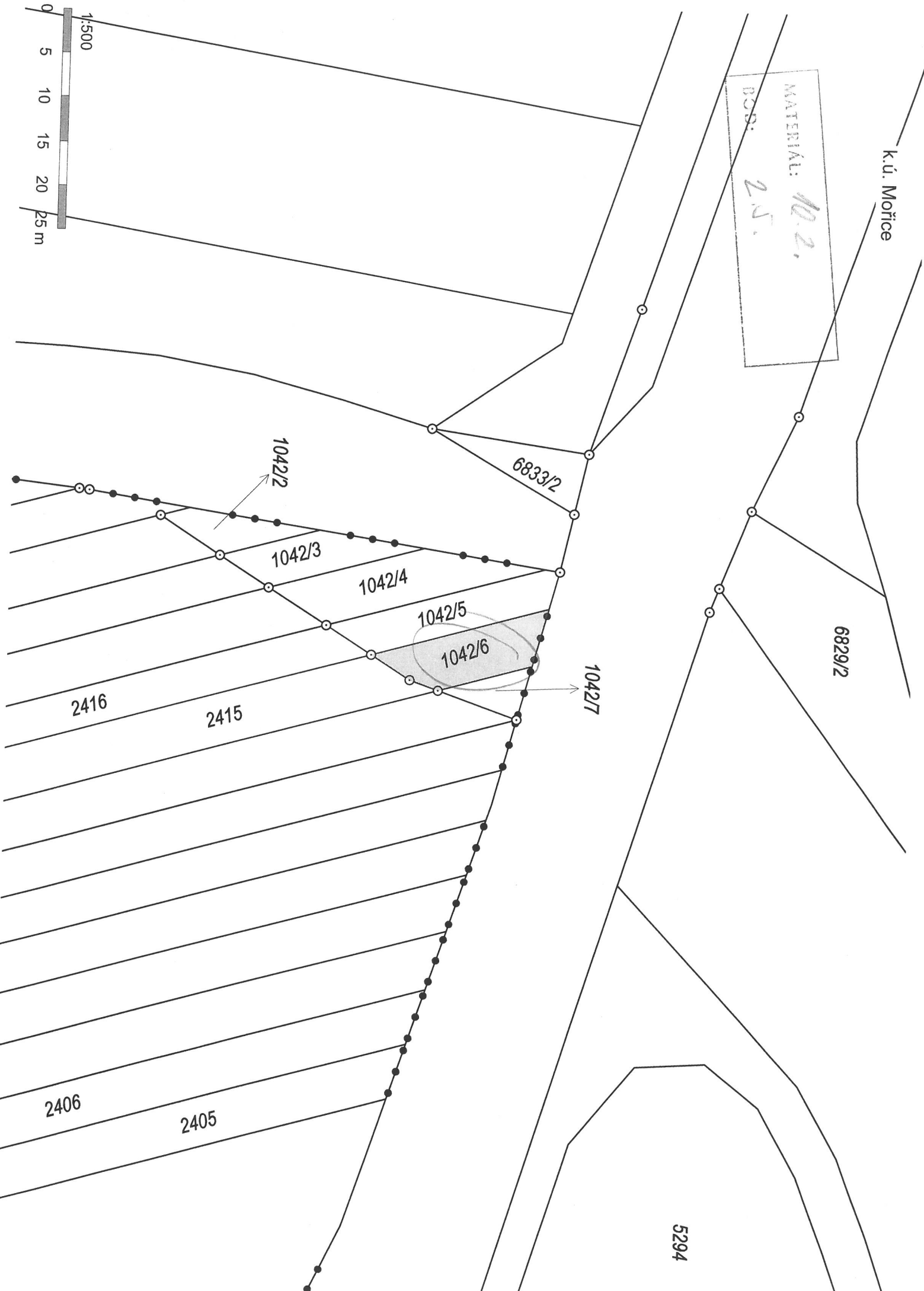
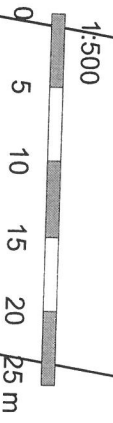
1042/2

2415

2416

2405

2406



k.ú. Partutovice

434/8  
434/5

MASTROVKA: 10.2.

BOB: 2.6.

817/2

823/2

1332/3

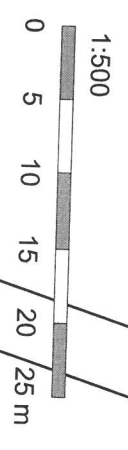
823/3

1332/5

822/2

822/1

20



N

k.ú. Hnojice

771/19

MATERIÁL: 10.2.  
BOD: 581/1 2.7.

207

755/2

580/15

370

264

250

580/13

218

65

855

67

852

784/15

784/16

69

856

72

71

861

547/1

784/17

372

865

204

91

865

90

862

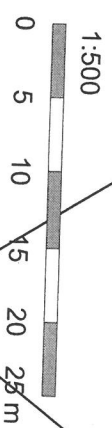
784/18

208

549/2

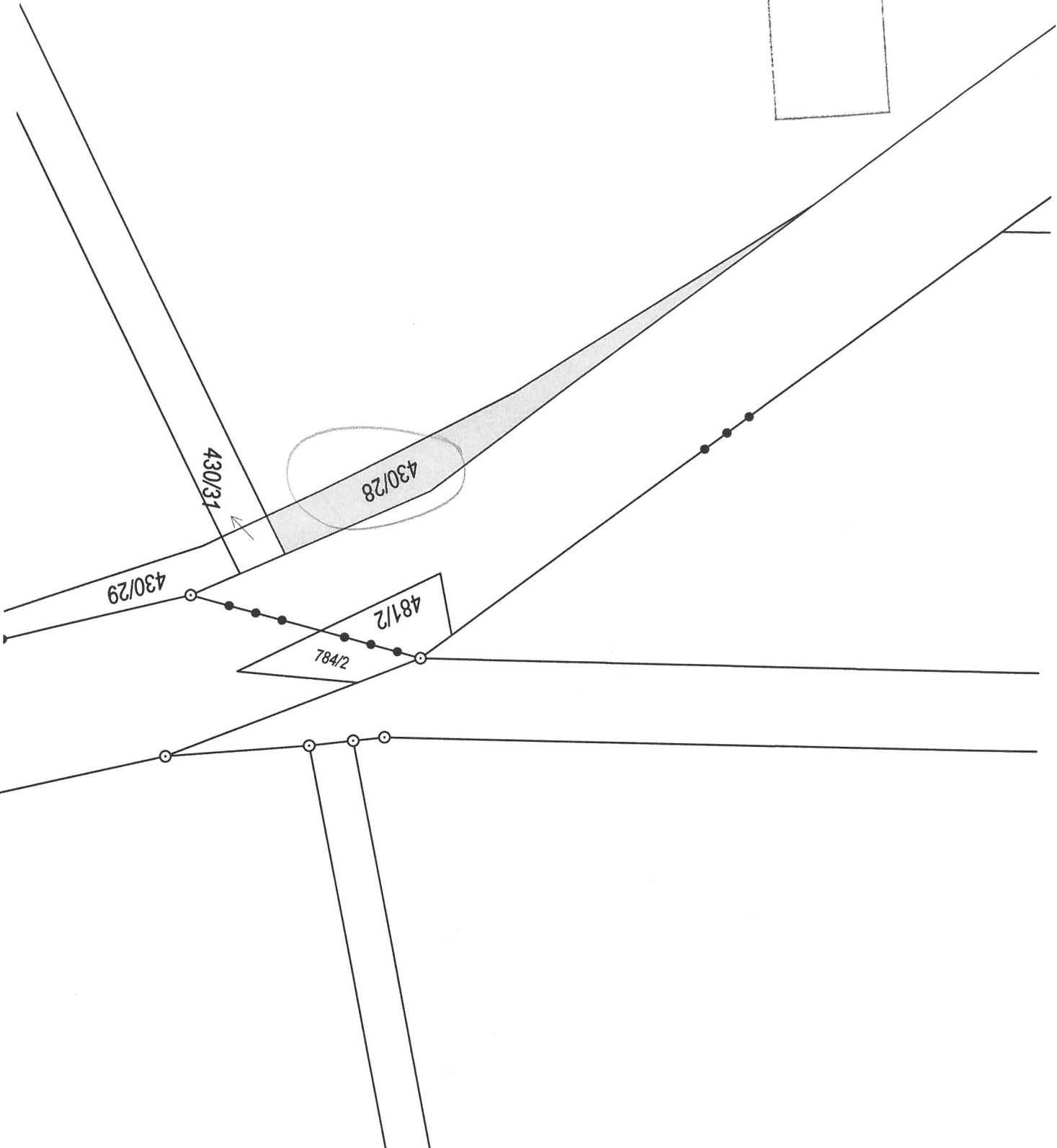
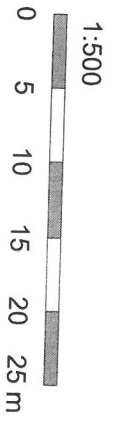
546/1

1/3



K.ú. Liboš

MATERIÁL: 10.2.  
BOD: 2.81



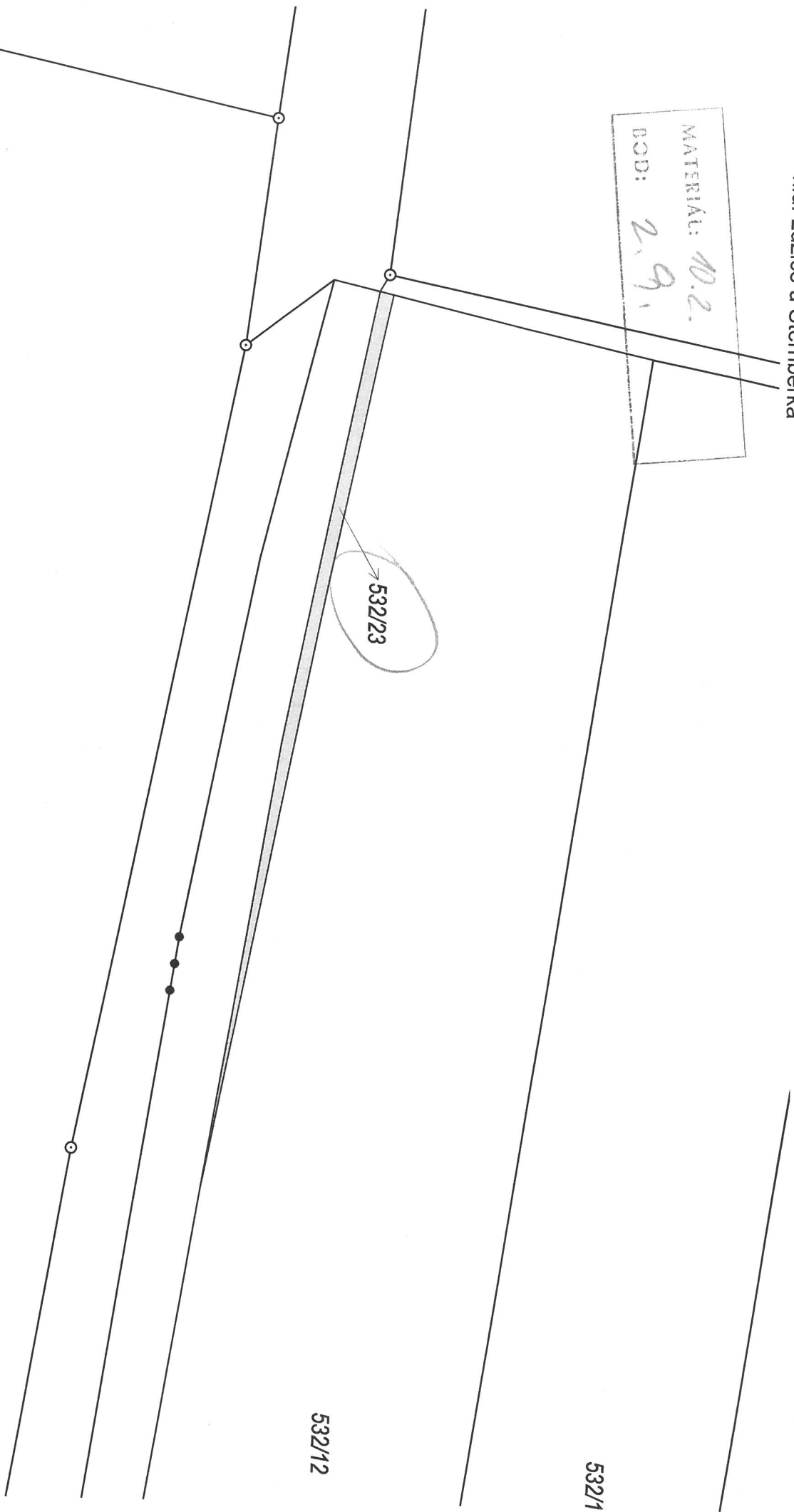
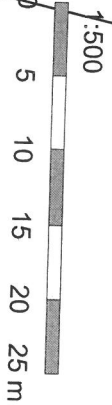
K.ú. Lužice u Šternberka

MATERIÁL: 10.2.  
BOD: 2.9.

532/23

532/1

532/12

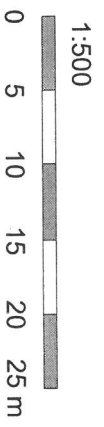


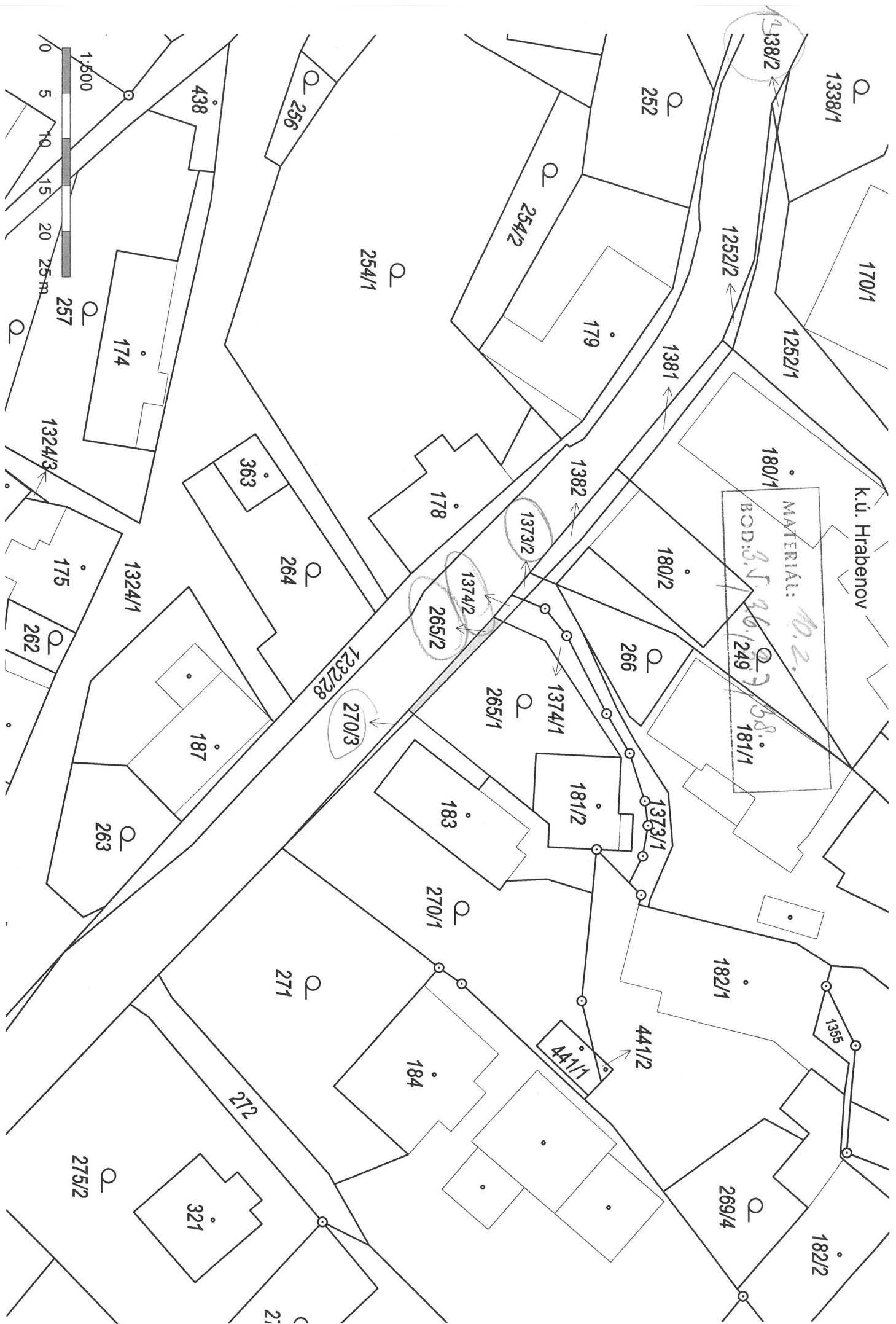
LD, LUTICE V ŠNEKUBERKA

MATERIÁL: 10.2  
KOD: 2.10.

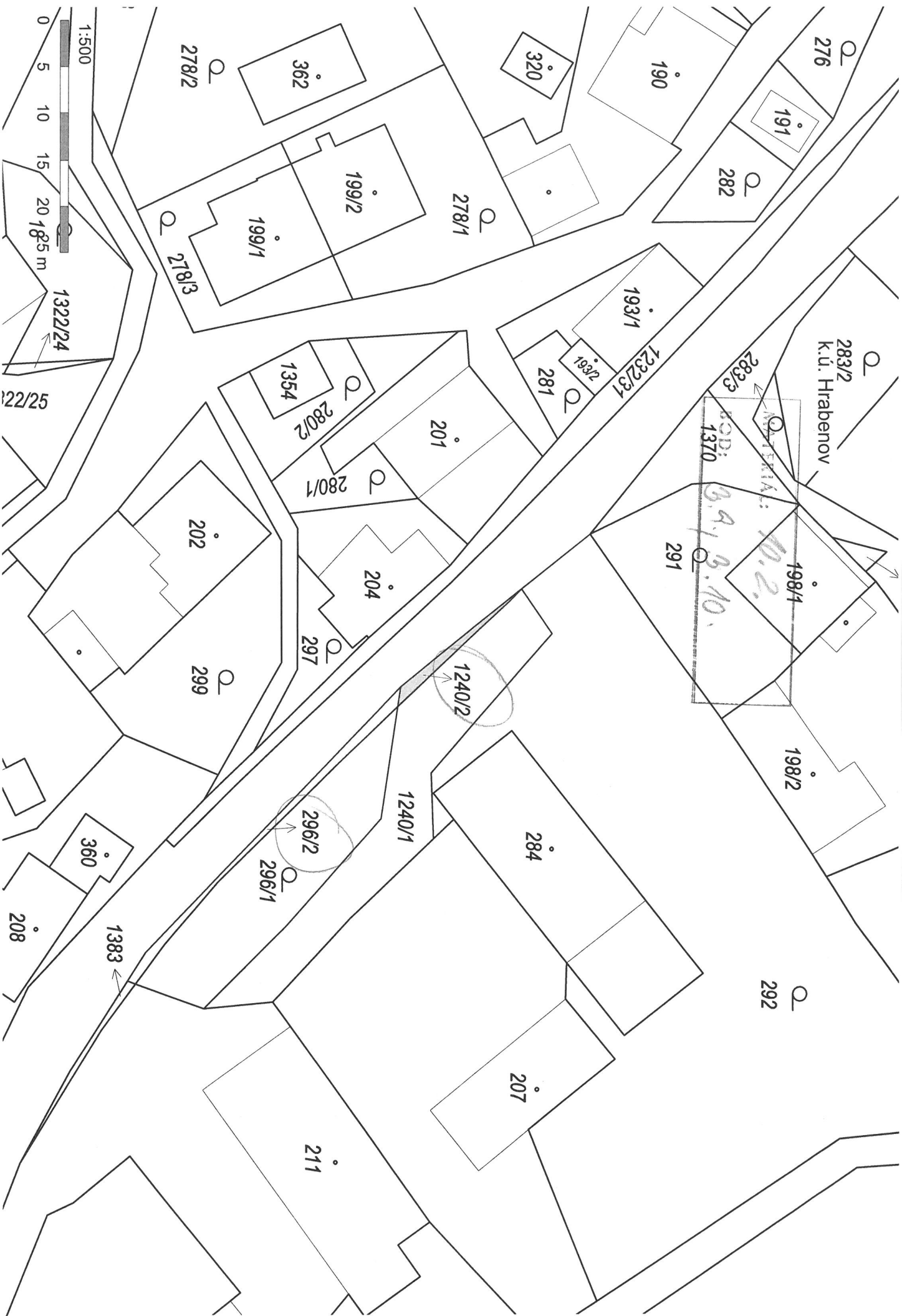
684/41

684/40









1:500

0 5 10 15 20 18.5 m

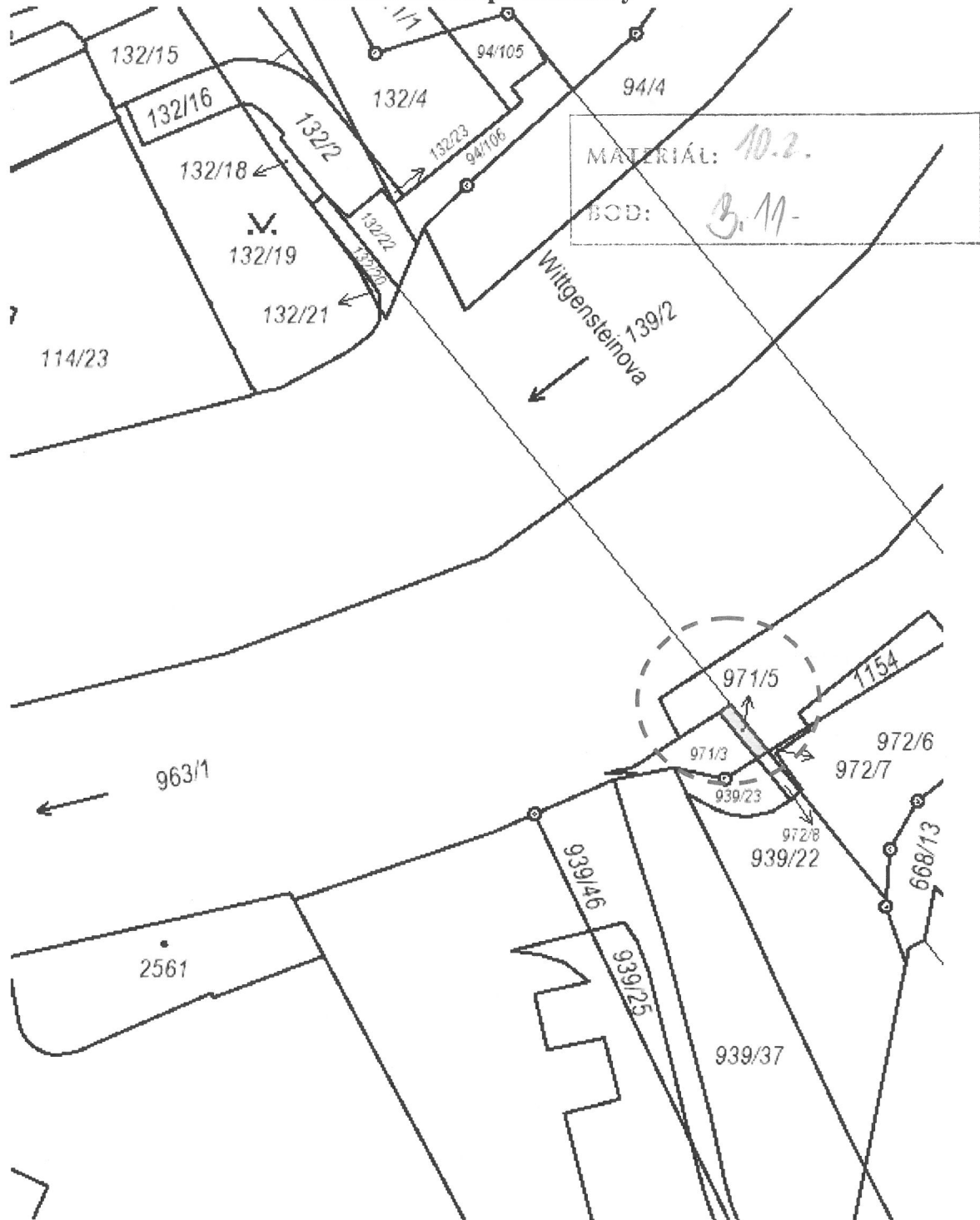
1322/24

222/25

k.ú. Hrabenov

KOP: 1370  
MATERIA: 10.2.  
3.9.1.3.10.

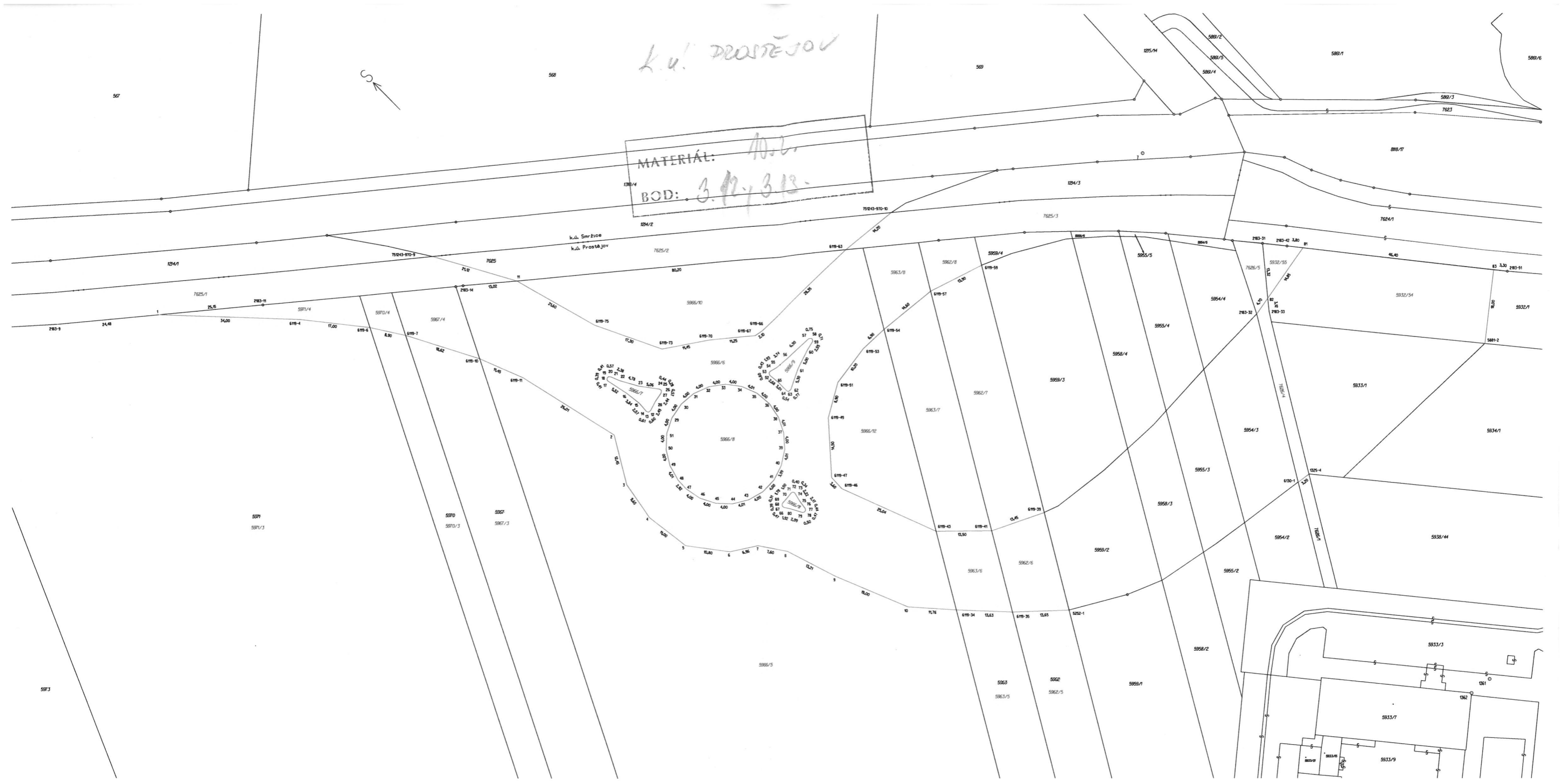
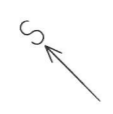
Katastrální mapa Hodolany



KM Hodolany

k.u. PROSTĚJOV

MATERIÁL: 10.2.  
BOD: 3. 12. 3. 13.





ku' pravejov

MATERIÁL: 10.2.  
BOD: 3.12, 3.13.



Q.  
5840/3

584

584

584

584

584

584

584

584

585

585

585/1

585/3

585/4

585

585/2

604-1

604-2

604-3

604-4

604-5

604-6

604-7

604-8

604-9

604-10

604-11

604-12

604-13

604-14

604-15

604-16

604-17

604-18

604-19

604-20

585/3

585/2

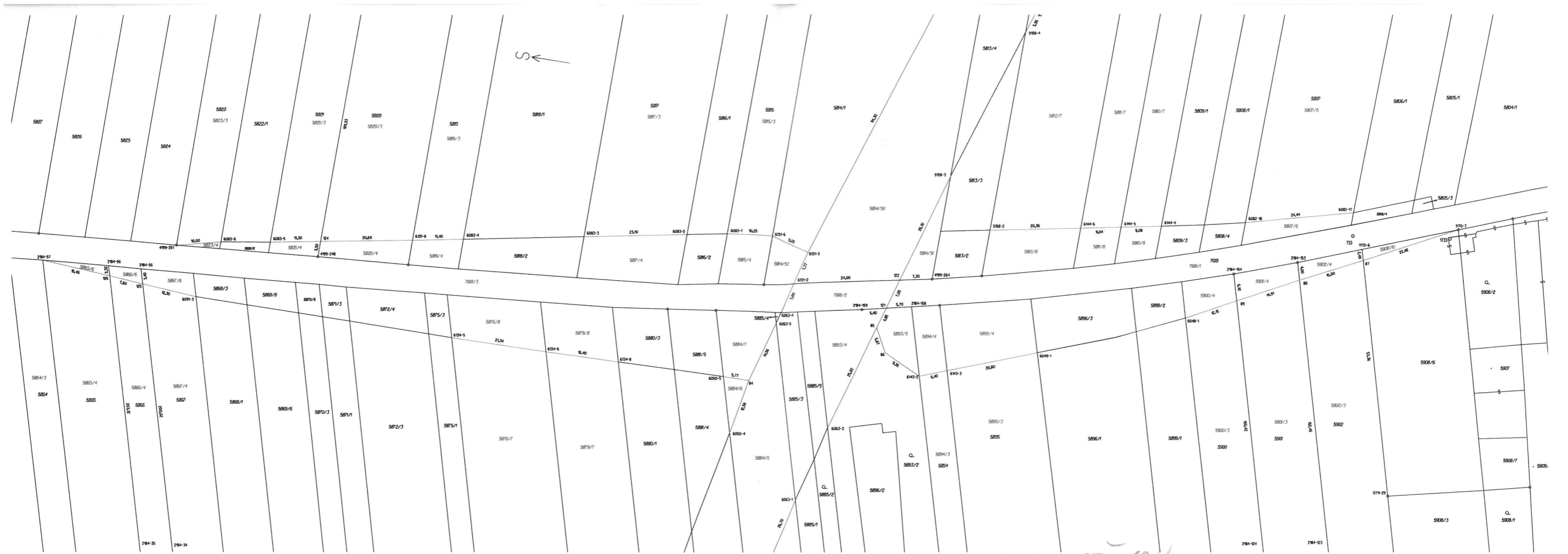
585/1

585/17

K. U. PROJEKTOV

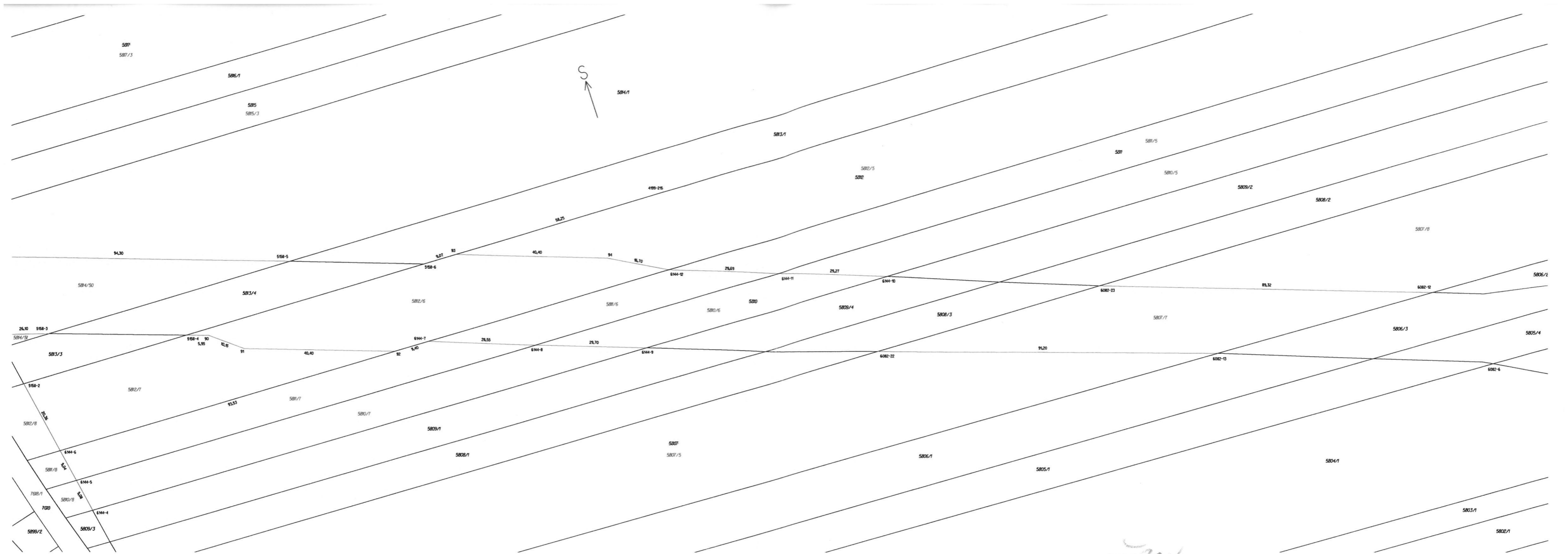
MATERIÁL: 10.2.  
BOD: 3.12, 3.13.





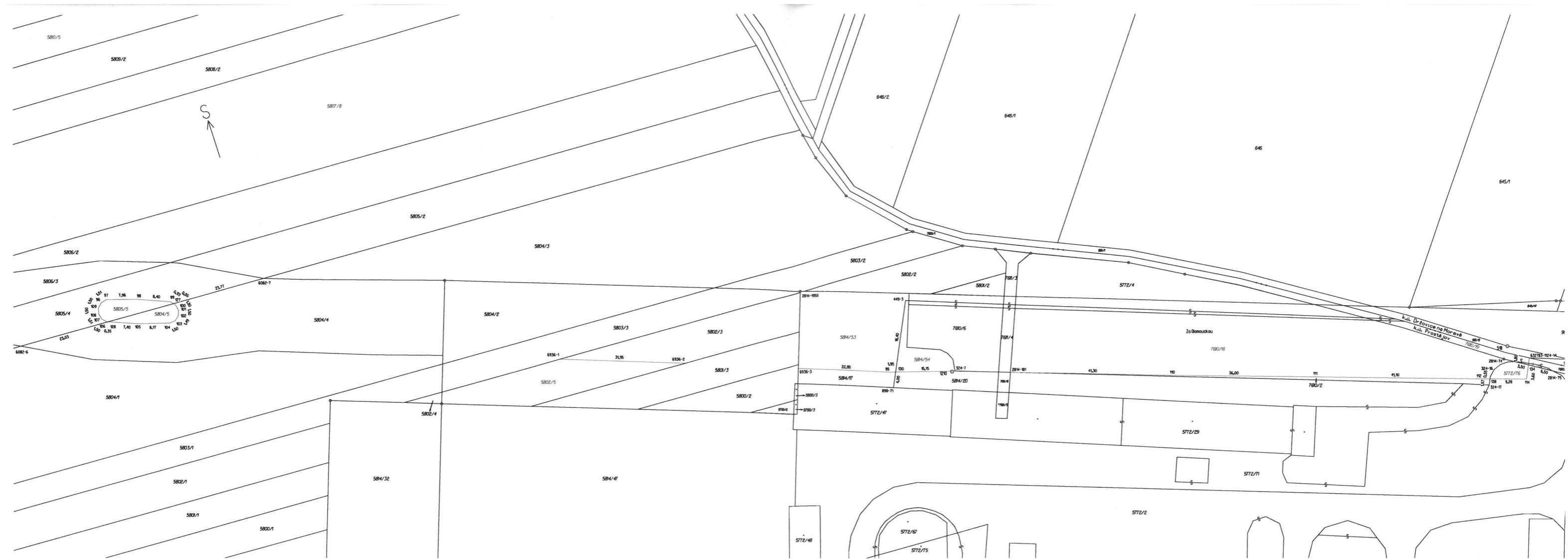
k u. PROSTĚJOV

MATERIÁL: 10.2.  
BOD: 3.12, 3.13.



*K. u' PROSTĚJOV*

MATERIÁL: 10.2.  
 BOD: 3.12, 3.13.



K u' PROSTĚJOV

MATERIÁL: 10.2.  
 BOD: 3.12, 3.12.





k.ú. Prostějov

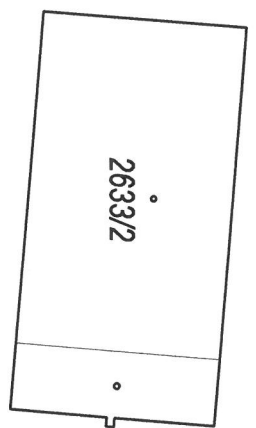
MATERIÁL: 10.2,  
 BOD: 3.12, 3.13.



2639/1 k.ú. Proszějov

MATERIÁL: 10.2.  
KOD: 3. A.

2633/4

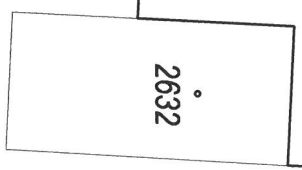


2633/2

2633/1

2633/5

2631/2



2632

2637/1

3371/1

3381

3379

3378

3376/2

3376/1

3374

2638/6

2635/11

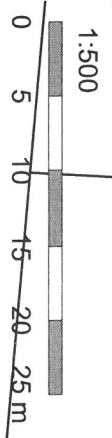
2638/5

2631/1

2638/3

2638/2

2638/1



7

7E