

95

9458

1394

Bystřice

959 51

959 50

959 49

959 33

Kovářská

959 27

959 20

959 35

959 34

MATERIÁL: M. A. A.
BOD: A. A. A.

L. D. HOŠPOLANY

912

2465

959 17

2463

953

959 16

959 35

959 35

2159

959 35

959 41

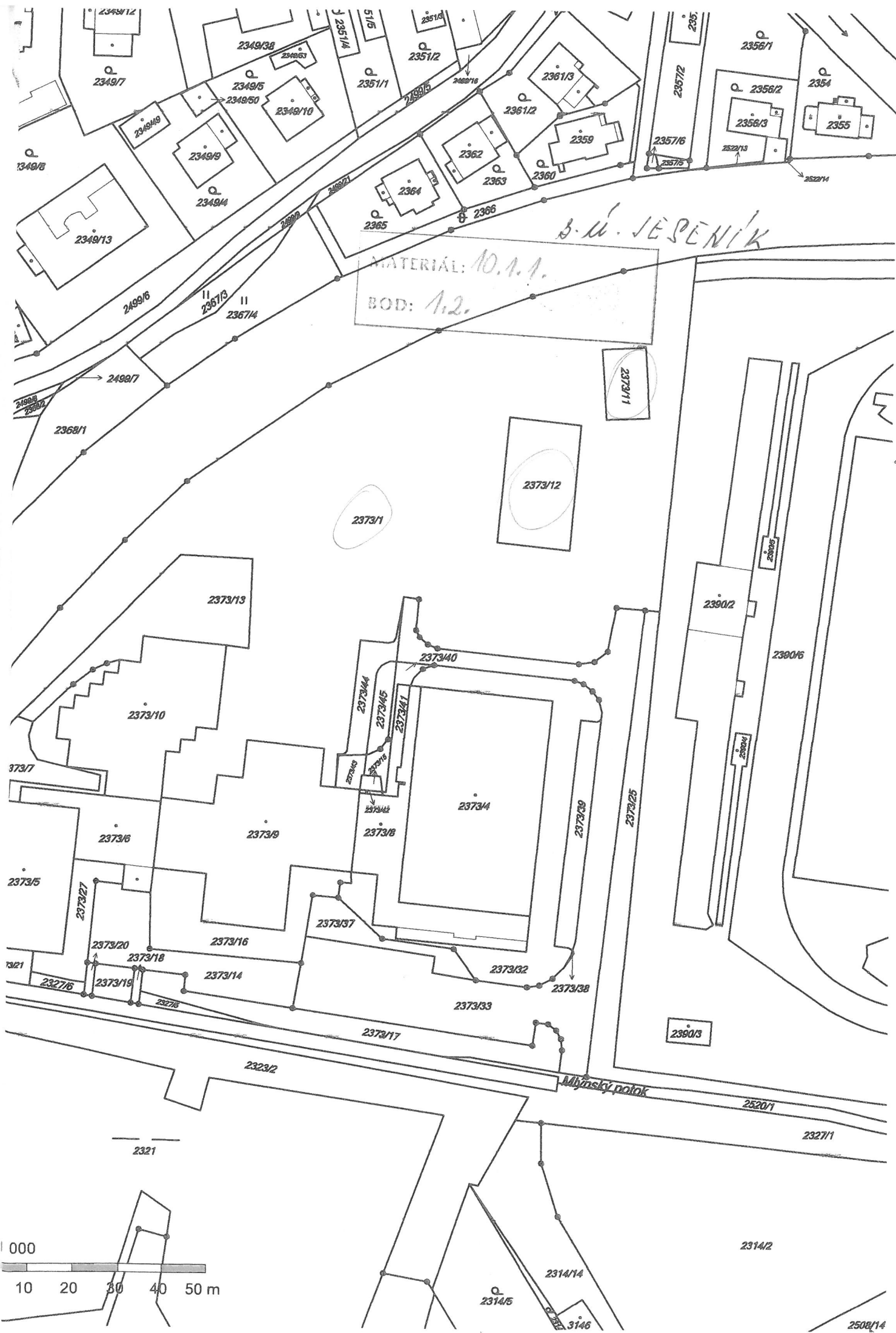
959 9

17487

959 12

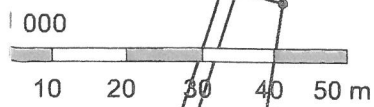
2265

5



MATERIAL: 10.1.1.
BOD: 1,2.

S. U. JESENÍK



2321

2314/2

2314/14

2314/5

3146

2508/14

2327/1

2520/1

Mlýnský potok

2373/17

2373/33

2373/38

2373/32

2373/37

2373/16

2373/18

2373/19

2327/6

2373/27

2373/5

2373/6

2373/9

2373/8

2373/42

2373/43

2373/44

2373/45

2373/41

2373/40

2373/4

2373/10

2373/13

2373/1

2373/12

2373/11

2367/14

2367/3

2499/6

2368/1

2499/7

2499/8

2349/13

2349/4

2349/9

2349/49

2349/10

2349/50

2349/5

2349/7

2349/38

2351/11

2351/2

2351/4

51/5

2351/4

2357/6

2357/5

2357/2

2356/1

2356/2

2356/3

2354

2355

2352/13

2352/14

2390/6

2390/2

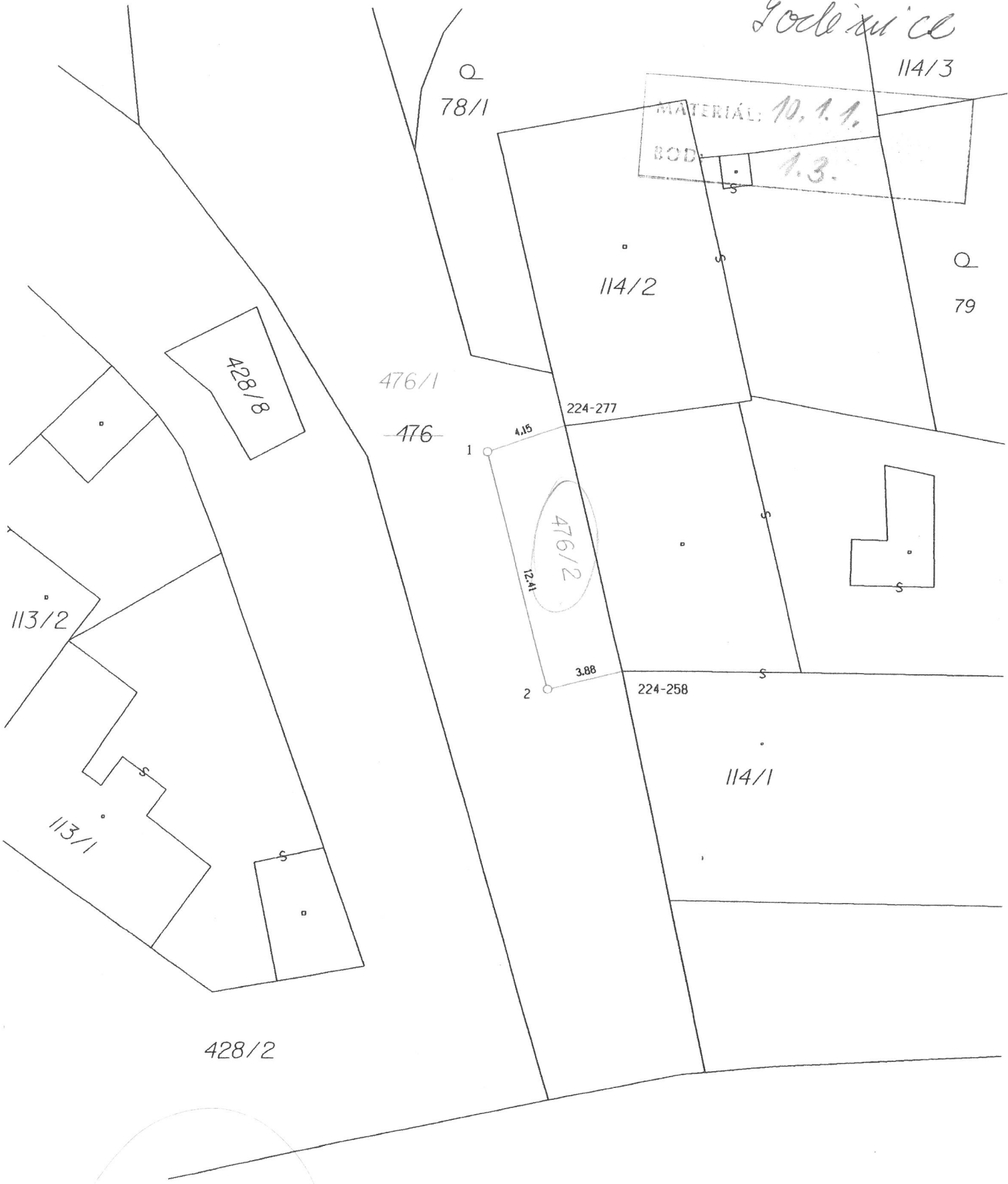
2390/3

2373/25

2373/39

2323/2

8.11. Moravská
Golčůvce



S. u. BĚLKOVICE

MATERIÁL: 10.1.1.
BOD: 1.4.

← 1070/2

||
292/1

1018/2

13-4

α
289

15.35

1018/10

13-1

1022

M.L.č. Šternberk 6-6/33

M.L.č. Šternberk 6-6/34

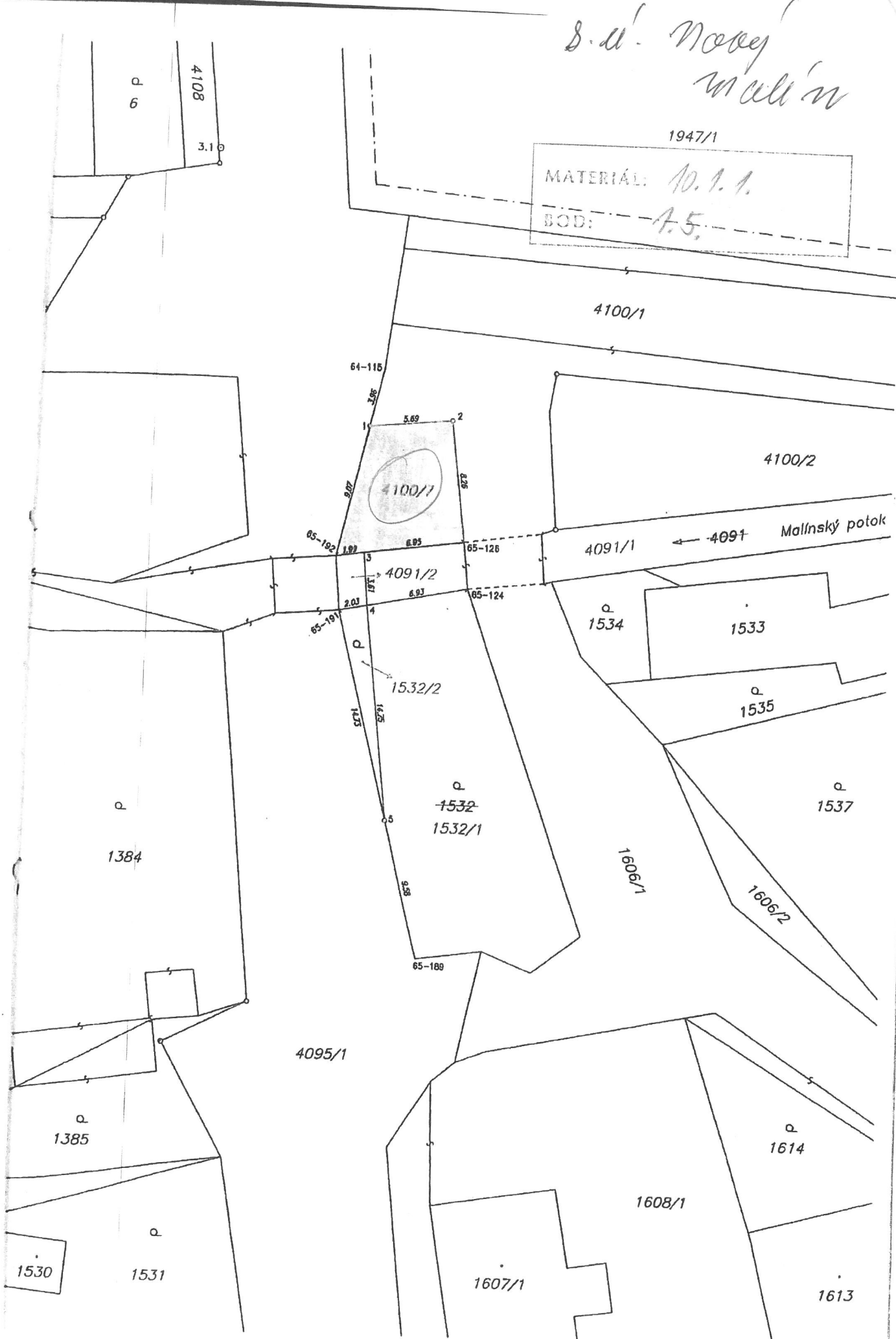
623/4

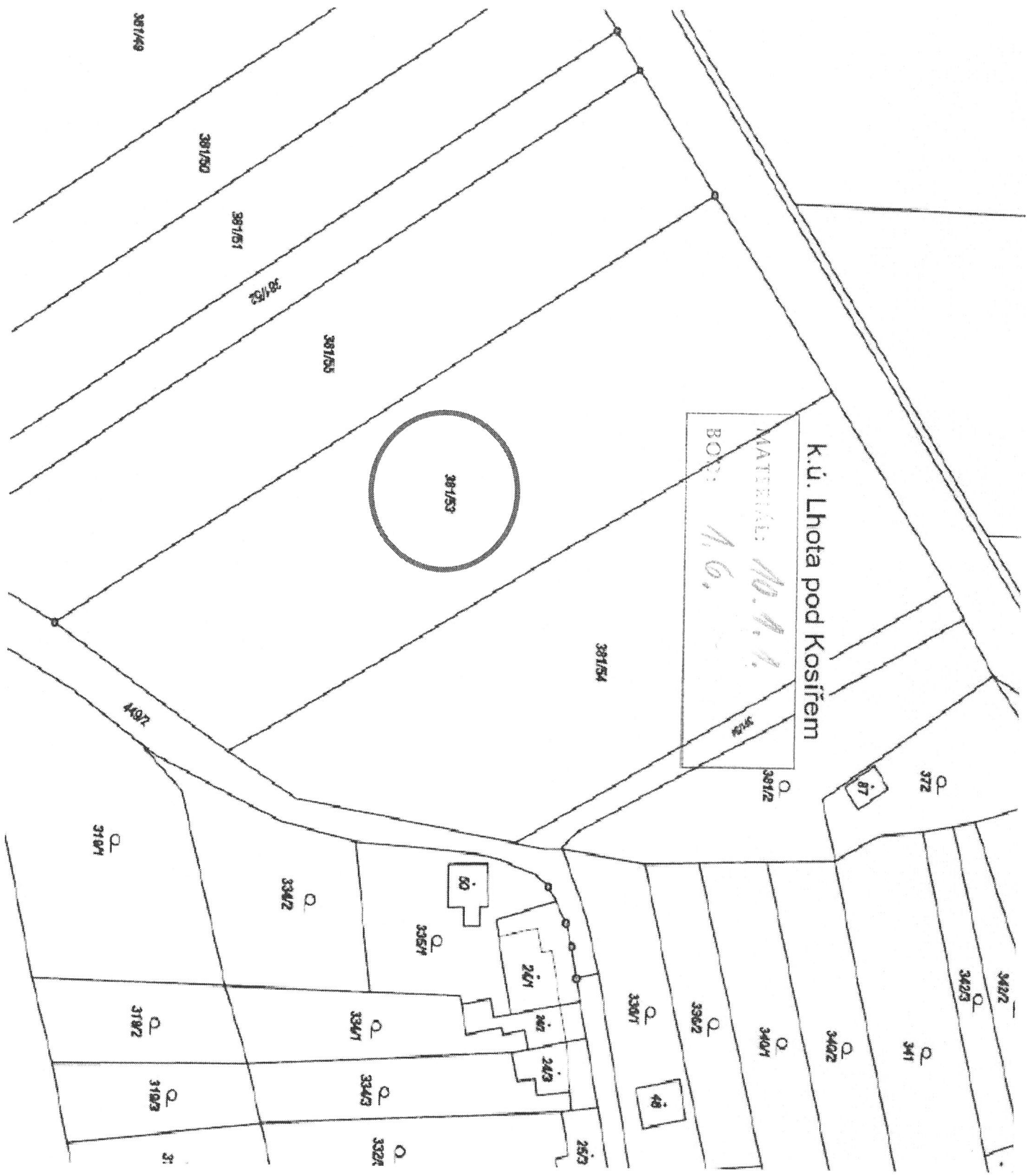
S. d. Nový
malin

1947/1

MATERIÁL: 10. 1. 1.

BOD: 1. 5.





K.ú. Lhota pod Kosířem

MATERIALS No. 1.1.
BOB: 1.6.

381/53

381/54

381/50

381/51

381/52

381/55

381/49

372

37

3402

3403

341

3402

3401

3362

3301

253

50

3351

241

242

243

3341

3342

3324

3342

3102

3103

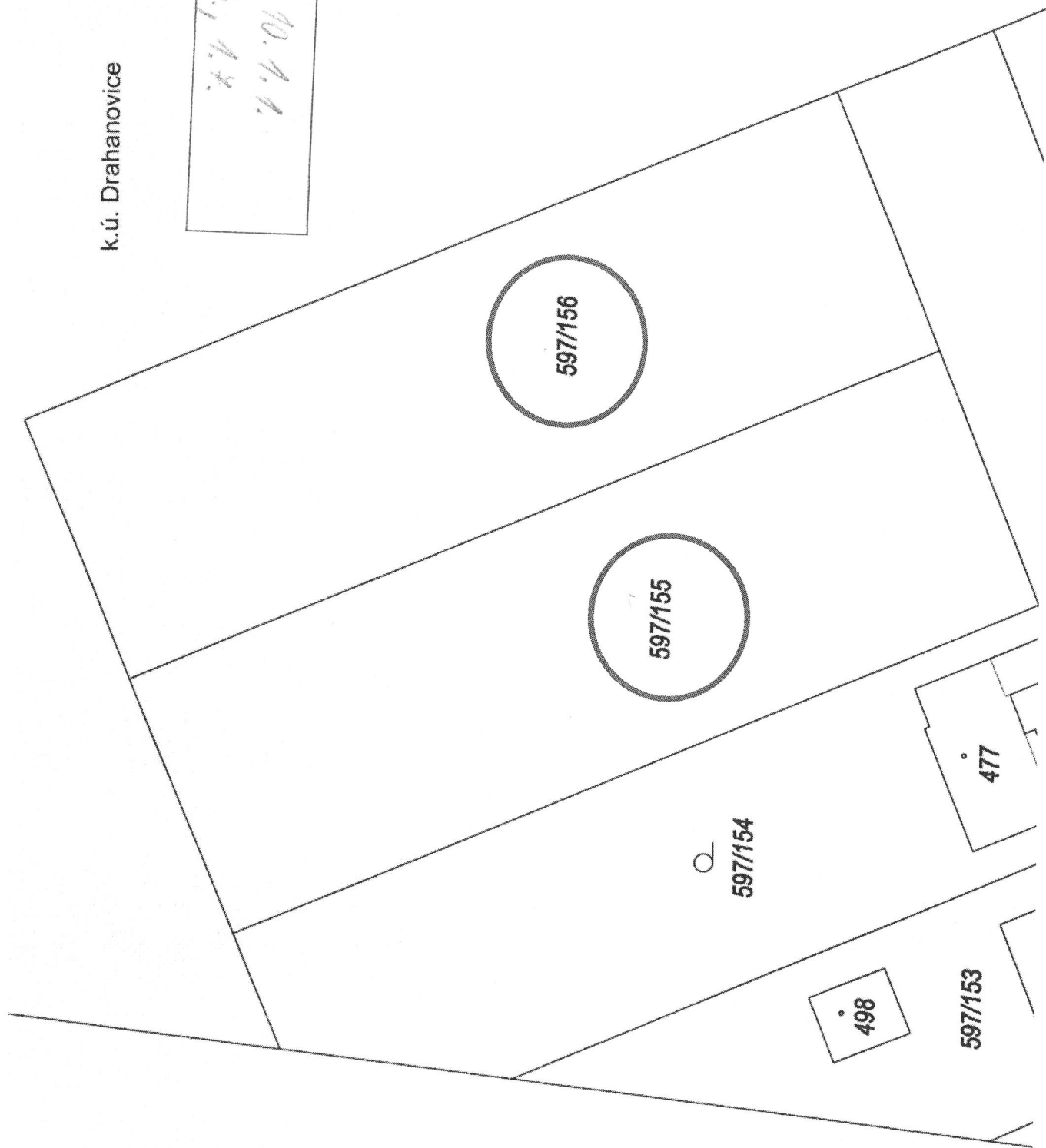
31

3101

207

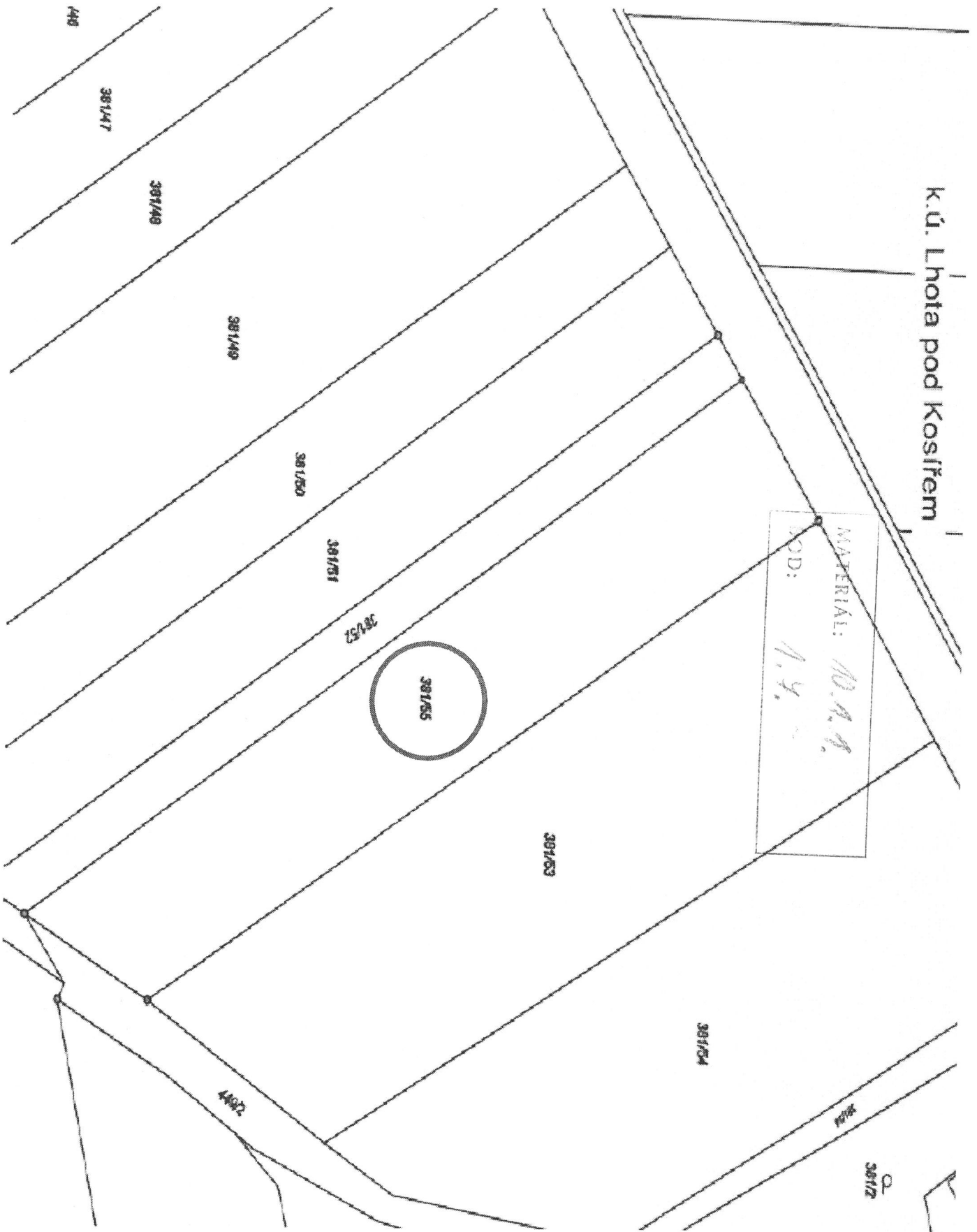
k.ú. Drahanovice

MATERIAL: 10. A. A.
BOD: 1.6. 1.7.



k.ú. Lhota pod Kosířem

MATERIAL: *M.A.A.*
DOD: *A.Y.*



K.ú. Prostějov

číslo: 10111

