



2256/8

MATERIÁL: 9.3,
BOD: 1.1,

KU LOSTICE

1566

1576/1

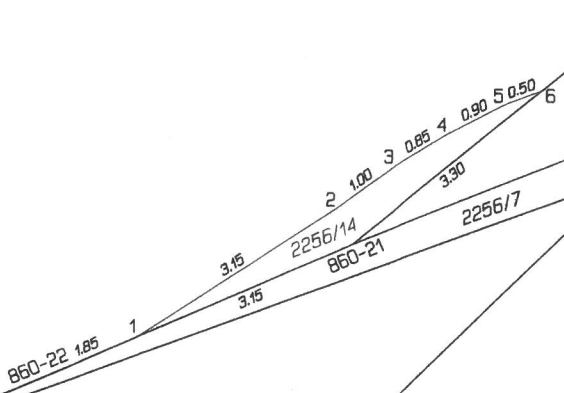
2256/9

2256/1

2256/11

860-233

2254/3



860-22 1.85

2256/14

860-21

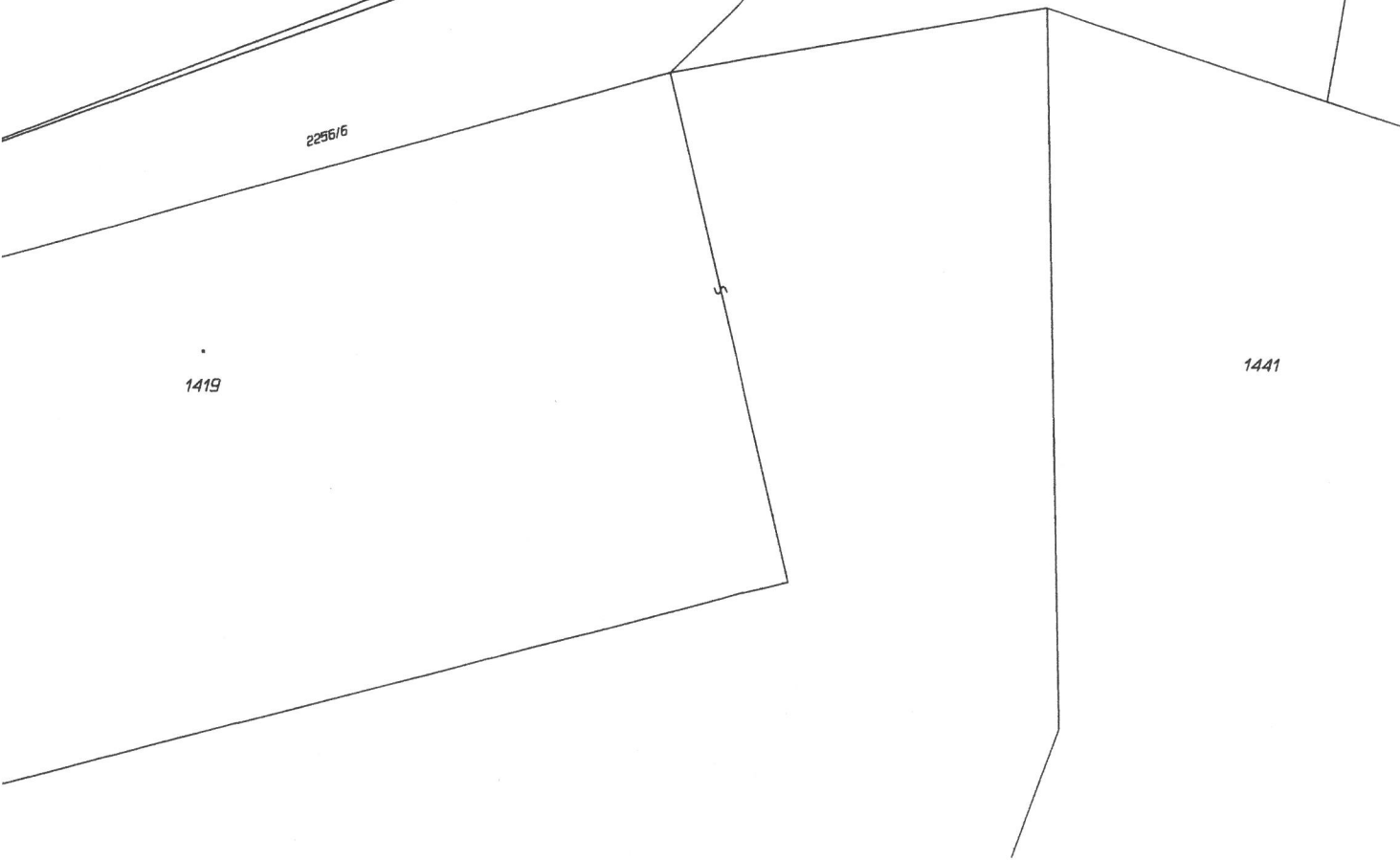
2256/7

1442/3

2256/6

1419

1441





MATERIAL: 9.3.
DOD: 1.2.

2260/4

340

419

181/18

444-3782

2260/6

477

181/77

2260/4

2303/3

293

181/6

506

181/37

2260/18

2303/1

181/4

181/54

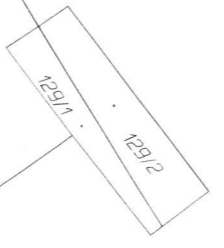
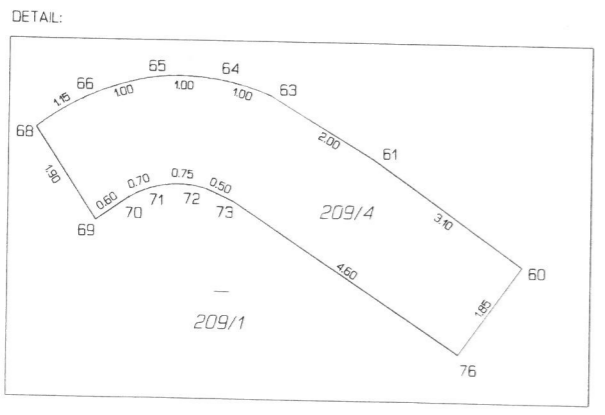
444-3606

K. u. HRANIČNÉ PEROVISE

STAVBA: 9.3.
M. O. P. : 1.3.



DETAIL:
209/1



1619/1

1619/6

1600/3

197/3

114

130/1

1629/2

196/2

102

1592/3

264/2

376/8

137-18

29

172-1582

M.L.C.: Sternberk 4-3/22

M.L.C.: Sternberk 4-3/24

264/1

376/6

135

322/2

198/5

199

318

71

93

100

101

198/2

1592/2

319

1592/5

1619/6

53

52

50

48

5.45

47

1.40

1.40

0.80

0.80

0.80

0.80

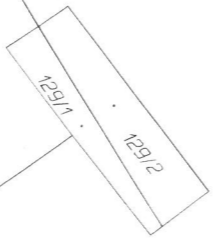
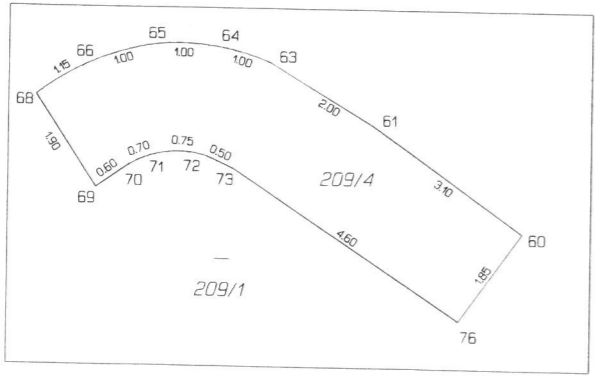
0.80

0.80

0.80

0.80

DETAIL:



1619/1

1619/6

1600/3

197/3

114

130/1

1629/2

196/2

102

1592/3

264/2

376/8

137-18

29

172-1582

M.L.C.: Sternberk 4-3/22

M.L.C.: Sternberk 4-3/24

264/1

376/6

135

322/2

198/5

199

318

71

93

100

101

198/2

1592/2

319

1592/5

1619/6

53

52

50

48

5.45

47

1.40

1.40

0.80

0.80

0.80

0.80

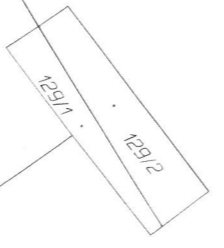
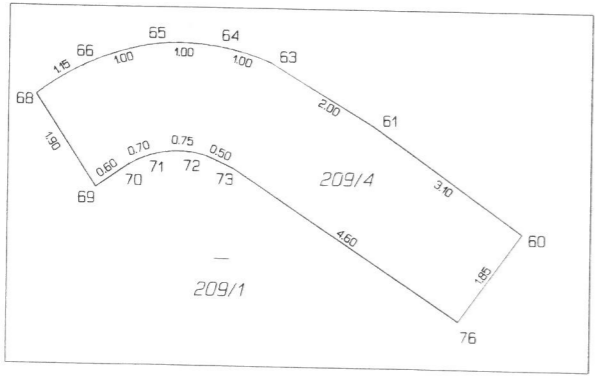
0.80

0.80

0.80

0.80

DETAIL:



1619/1

1619/6

1600/3

197/3

114

130/1

1629/2

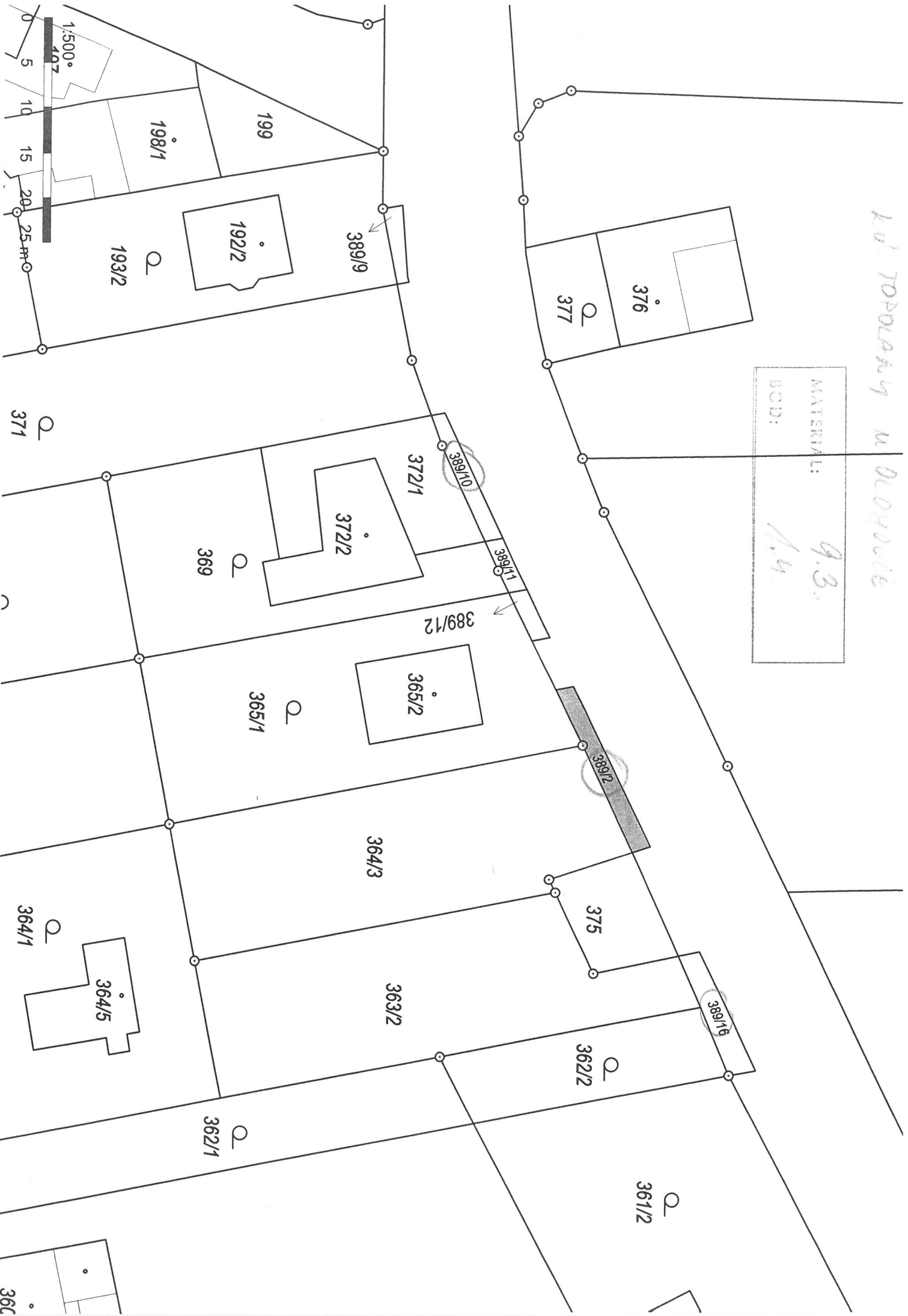
196/2

102

1592/3

10. ПОПРАВКА К ДЕКЛАРИ

MATERIAL: 9.3.
BOD: 1/4



K.ú. Topolany u Olomouce

416

POD: 1.9.3.
 MATERIÁL: 9.3.



k.ú. Topolany u Olomouce



1:4 000



k.ú. Topolany u Olomouce

MATERIÁL:	q. s.
BOD:	1. M.

389/17

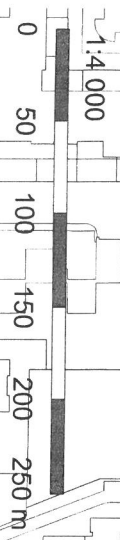


K.ú. Nové Sady u Olomouce



15

601/10



K.ú. Vojnice u Olomouce

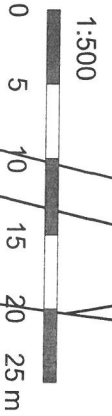
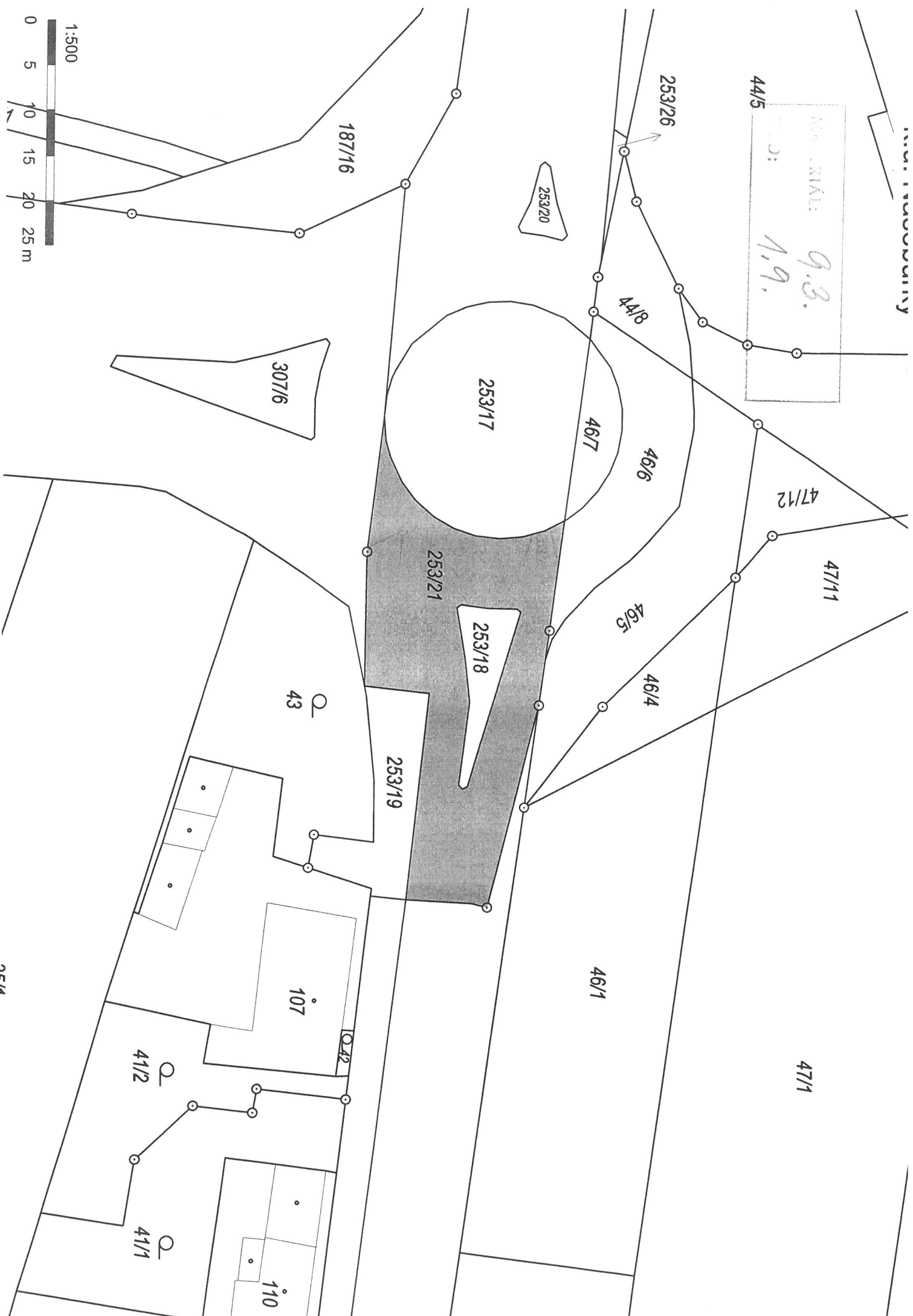
MAPA
1:2000
A.3.
1.0.1

Těšovice



INDUSTRIAL ZONE

NO. 1: 9.3.
1.9.



NEIN