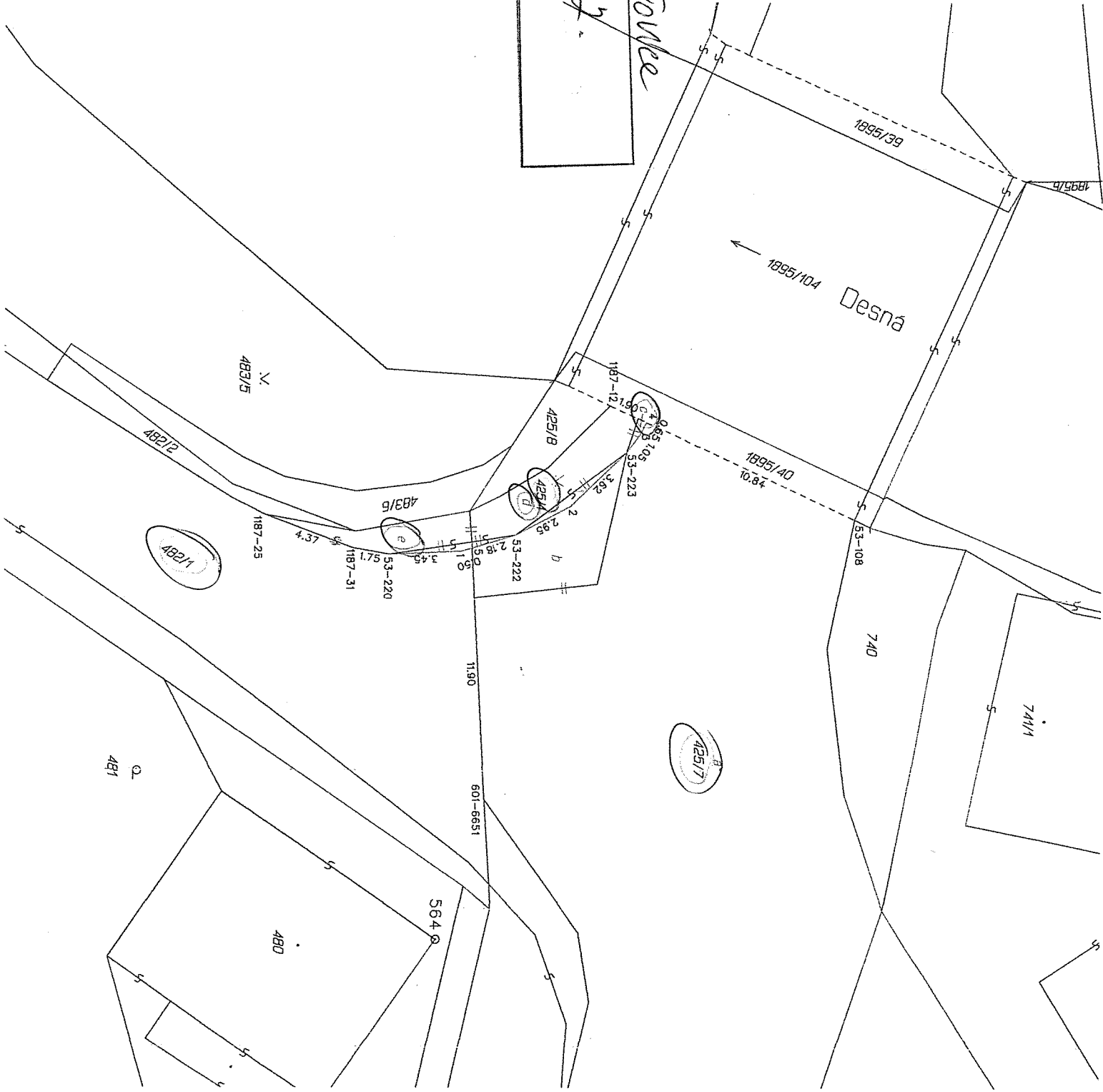
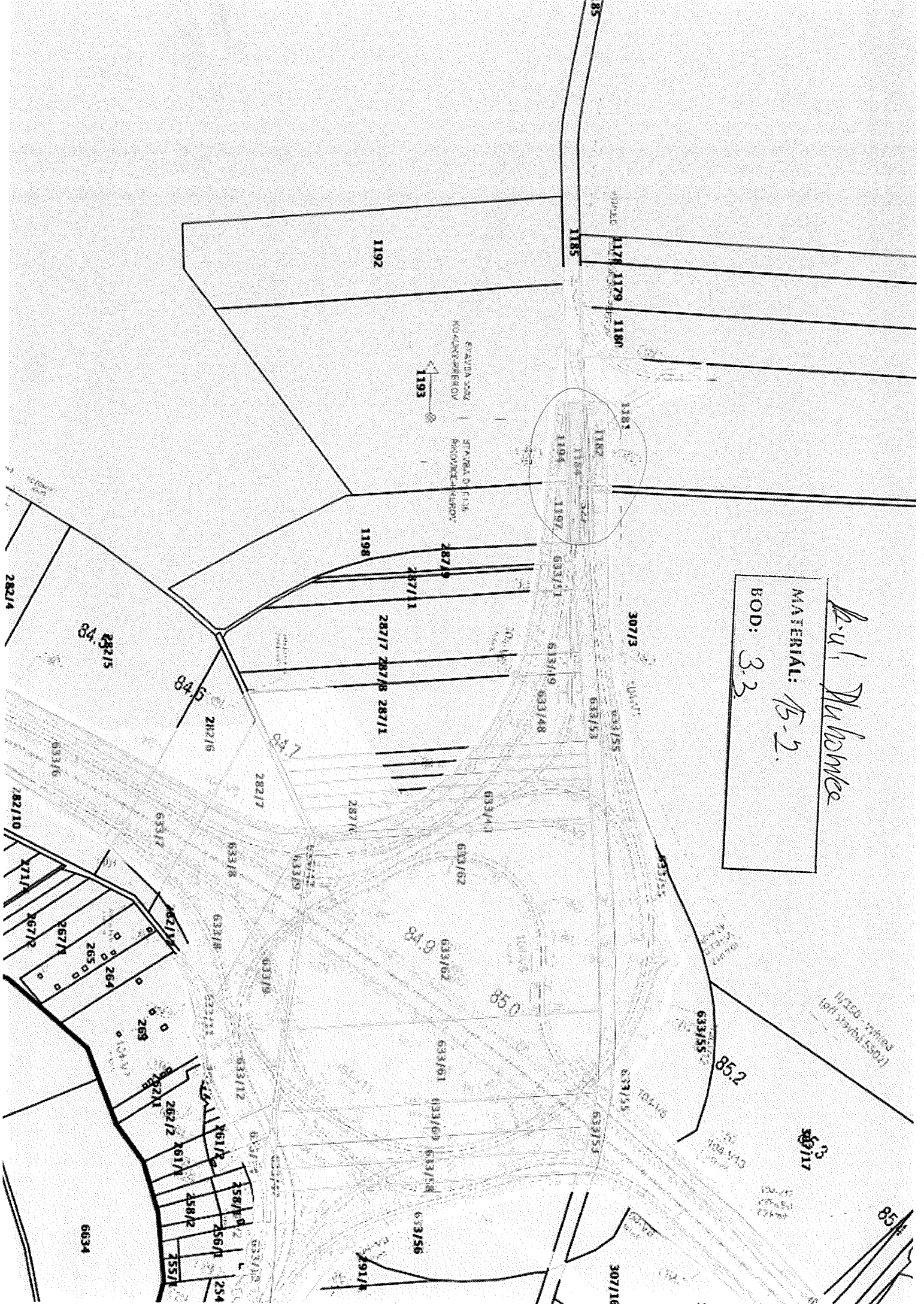




*R. v. Vekrovce*  
MATERIÁL: 15.2.  
BOD: 3.2.





L-11 Dubovica  
 MATERIAL: B-2.  
 BOD: 3.3

STAVBA 302  
 HODNOVSKÝ  
 1193

STAVBA 01136  
 HODNOVSKÝ  
 1194

84.5

84.5

84.7

84.8

85.0

85.2

85

85.3

282/4

282/10

271/1

267/1

265/1

264

263

262/1

262/2

261/1

258/1

256/1

254

258/2

256/2

255/1

6634

282/16

282/17

282/18

282/19

282/20

282/21

282/22

282/23

282/24

282/25

282/26

282/27

282/28

282/29

282/30

282/31

282/32

282/33

282/34

282/35

282/36

282/37

282/38

282/39

282/40

282/41

282/42

282/43

282/44

282/45

282/46

282/47

282/48

282/49

282/50

282/51

282/52

282/53

282/54

282/55

282/56

282/57

282/58

282/59

282/60

282/61

282/62

282/63

282/64

282/65

282/66

282/67

282/68

282/69

282/70

282/71

282/72

282/73

282/74

282/75

282/76

282/77

282/78

282/79

282/80

282/81

282/82

282/83

282/84

282/85

282/86

282/87

282/88

282/89

282/90

282/91

282/92

282/93

282/94

282/95

282/96

282/97

282/98

282/99

282/100

282/101

282/102

282/103

282/104

282/105

282/106

282/107

282/108

282/109

282/110

282/111

282/112

282/113

282/114

282/115

282/116

282/117

282/118

282/119

282/120

282/121

282/122

282/123

282/124

282/125

282/126

282/127

282/128

282/129

282/130

282/131

282/132

282/133

282/134

282/135

282/136

282/137

282/138

282/139

282/140

282/141

282/142

282/143

282/144

282/145

282/146

282/147

282/148

282/149

282/150

282/151

282/152

282/153

282/154

282/155

282/156

282/157

282/158

282/159

282/160

282/161

282/162

282/163

282/164

282/165

282/166

282/167

282/168

282/169

282/170

282/171

282/172

282/173

282/174

282/175

282/176

282/177

282/178

282/179

282/180

282/181

282/182

282/183

282/184

282/185

282/186

282/187

282/188

282/189

282/190

282/191

282/192

282/193

282/194

282/195

282/196

282/197

282/198

282/199

282/200



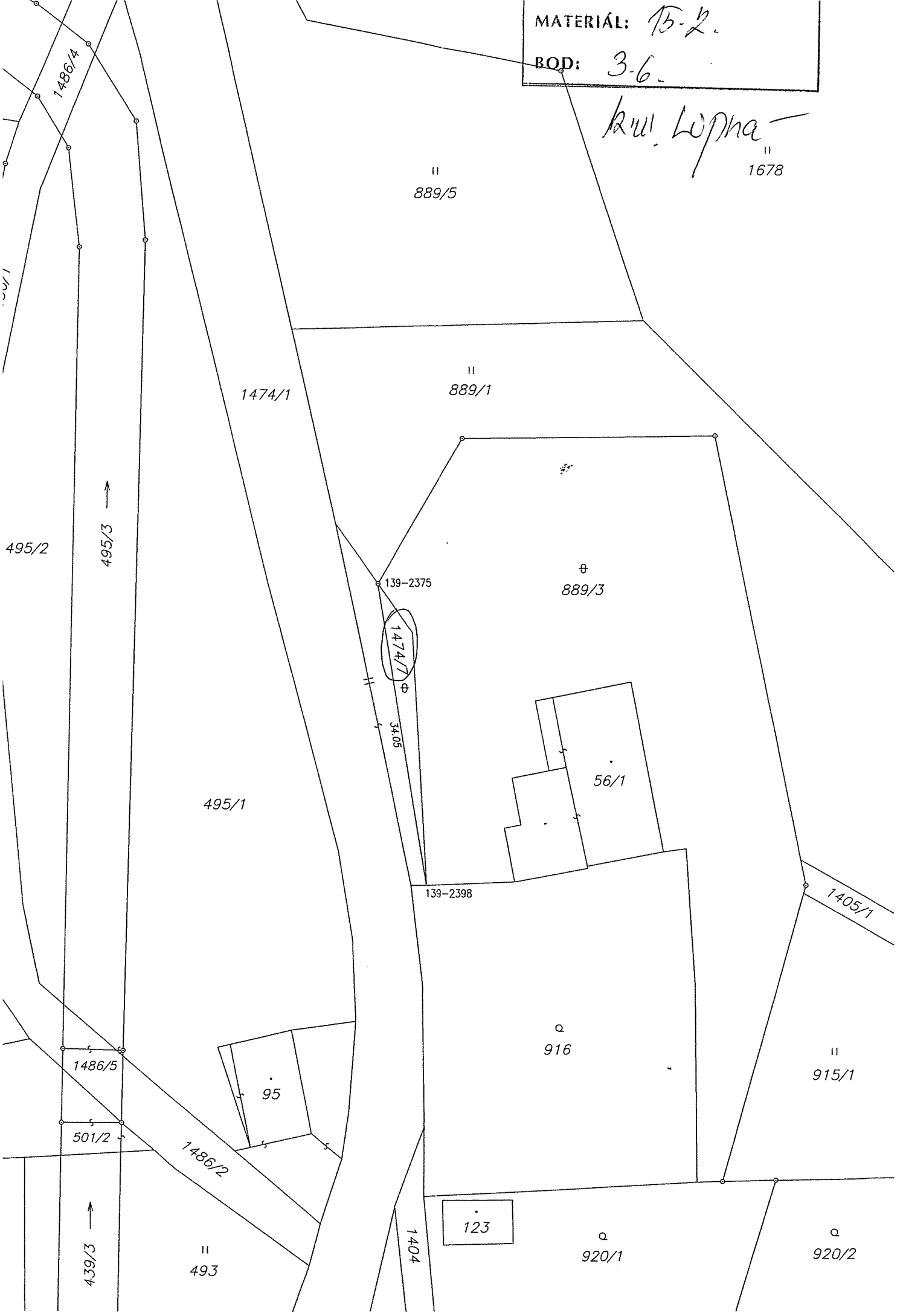






MATERIAL: 15-2.  
BOD: 3-6.

ku. Lopna  
1678



495/2

495/3 →

889/5

1474/1

889/1

139-2375

1474/7

34.05

889/3

56/1

495/1

139-2398

1405/1

1486/5

501/2

95

1486/2

1404

123

920/1

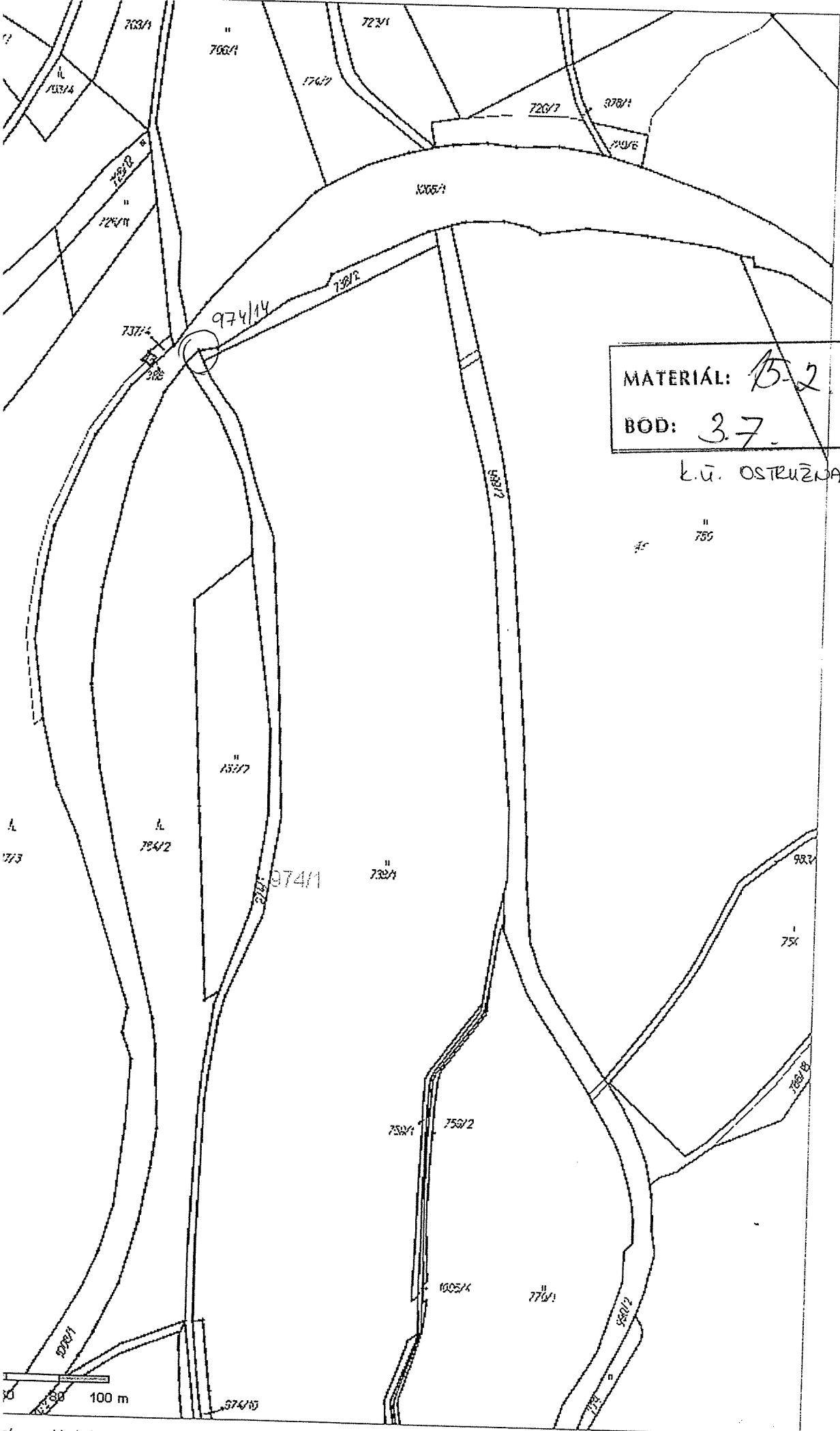
920/2

915/1

493

439/3 →





MATERIÁL: B-2  
 BOD: 3.7.

k.ú. OSTRUŽENÁ

.013  
 vání  
 ra č.  
 y č.  
 b. s

±

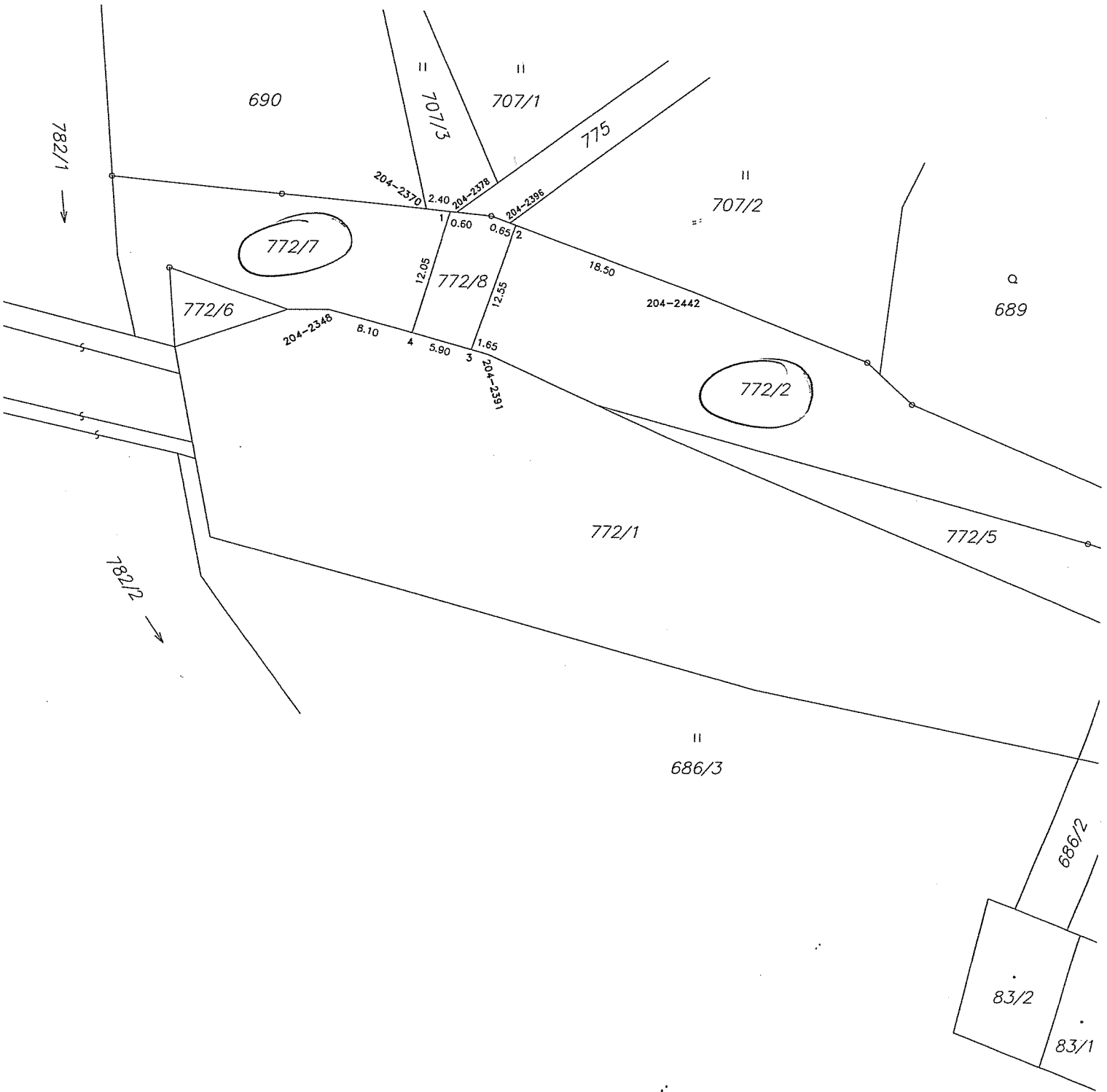
el a l

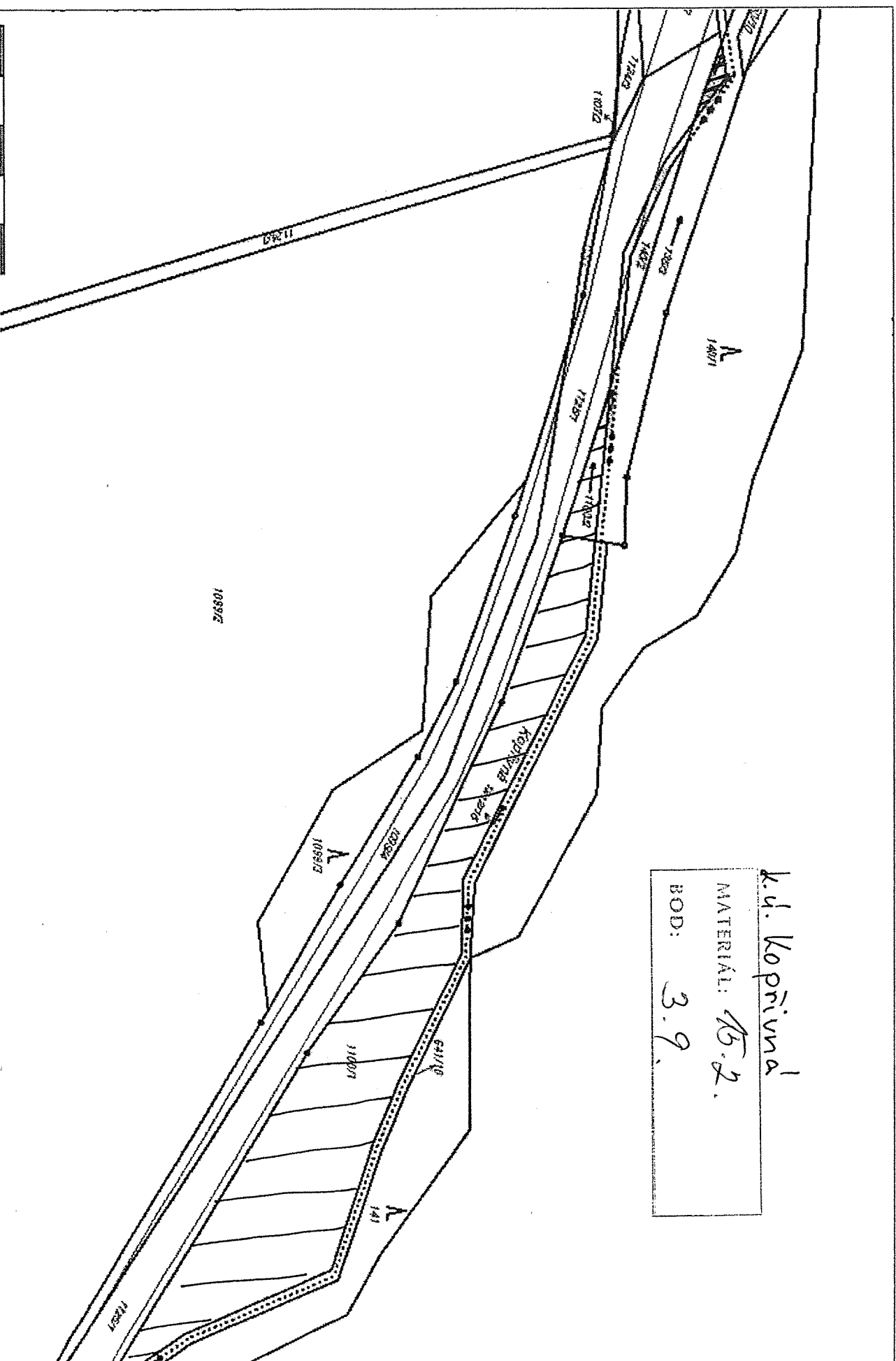


l.u. ŽINICE

MATERIÁL: 15-2.

BOD: 2.1, 2.2, 3.P.4.2





k.ú. Hynčice nad Moravou

MATERIÁL: 15-2.

BOD: 3.9.

