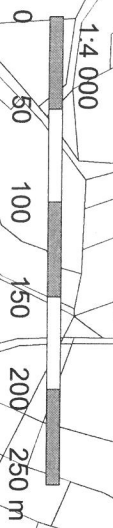


k.ú. Mérotin

MATERIÁL: 10.5.  
POD: 11.1

→ 512/12



k.ú. Měrotín

M.Š. 13.5.

BOD:



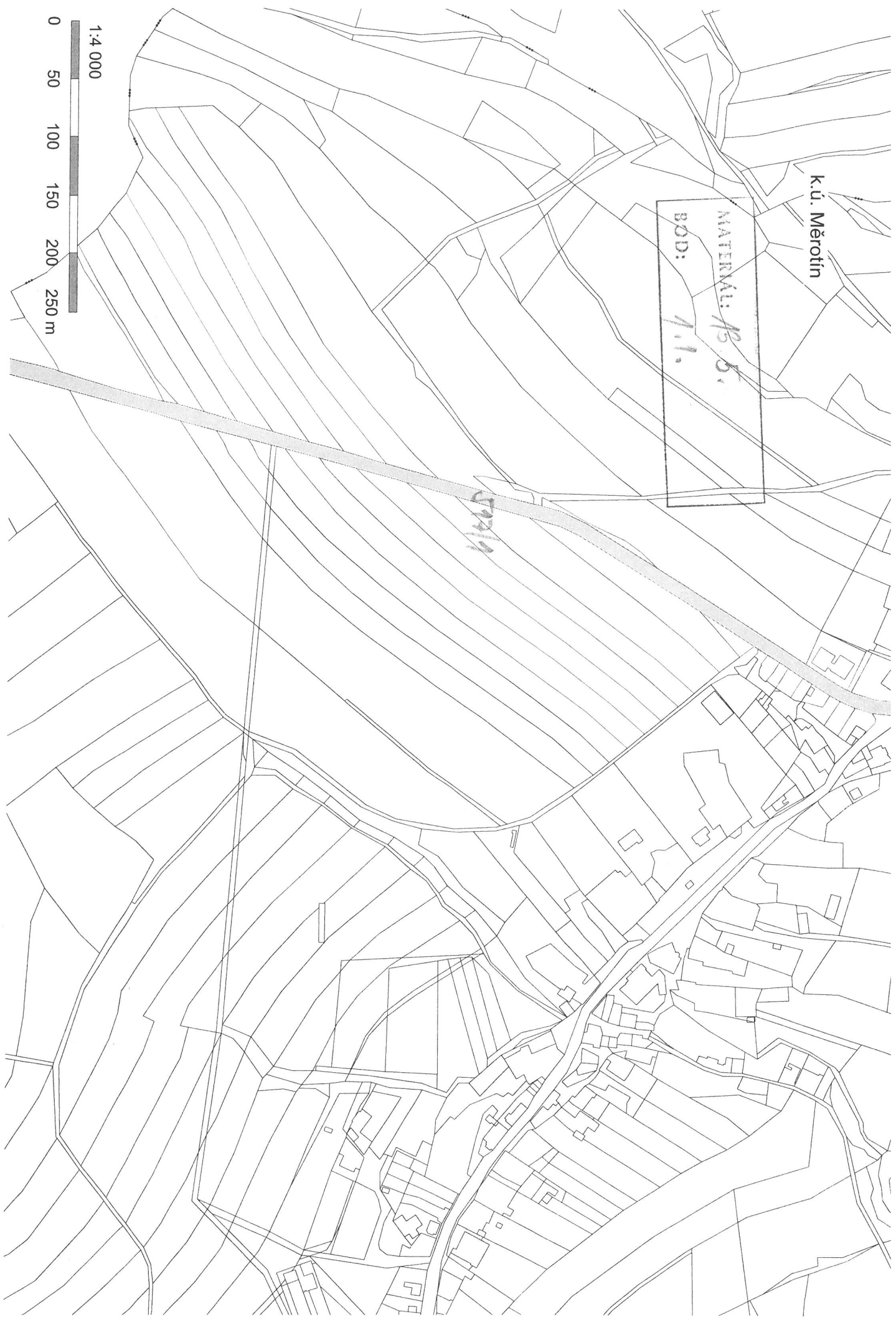
1:4,000

0 50 100 150 200 250 m

k.ú. Měrotín

MATERIÁL: 13.5.  
BOD: 1.1.

57219





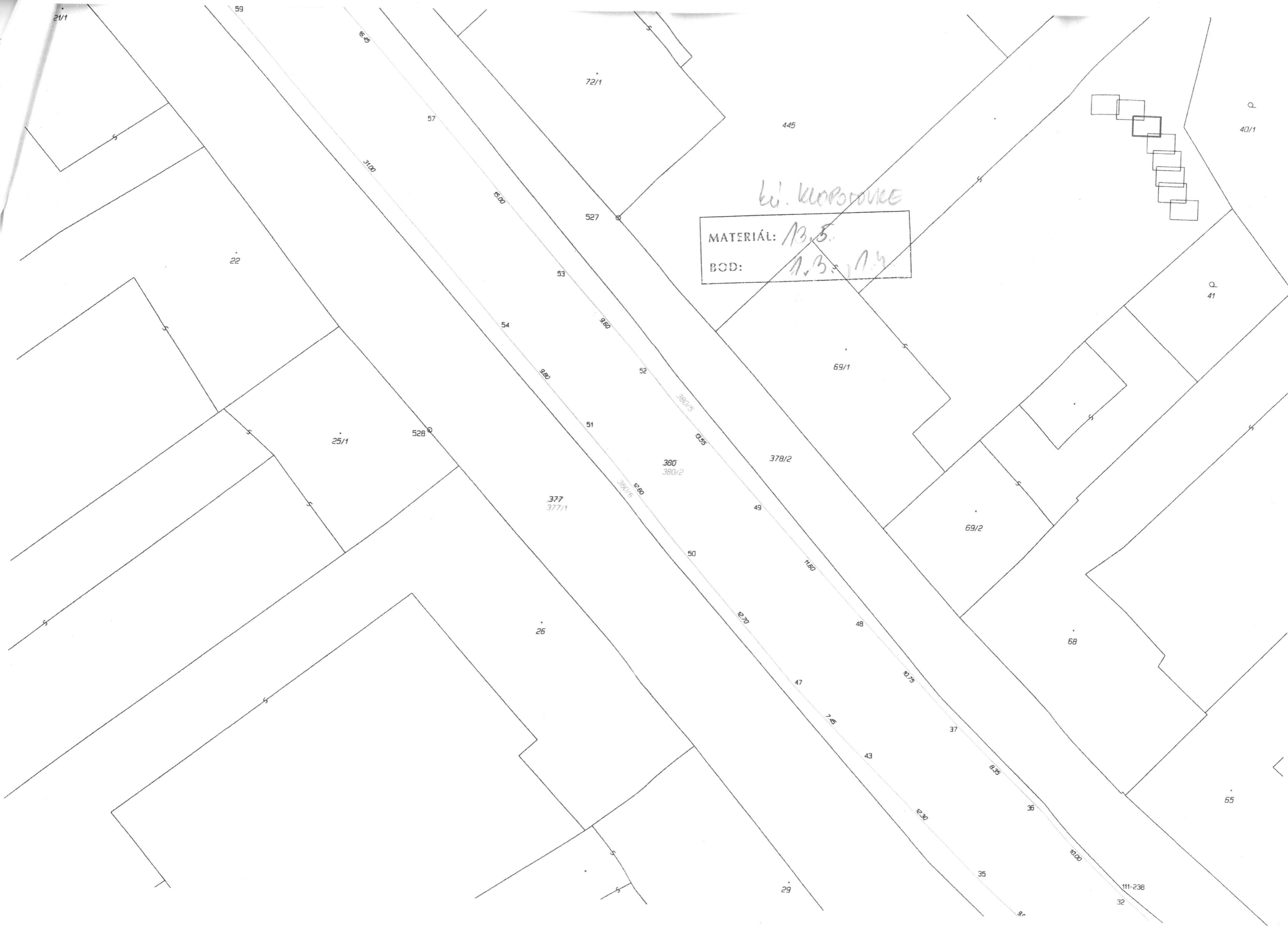
MATER: 13.5.  
BOD: 1.2.

L.u. Kupotnica



ku. KUROVODICE  
MATERIÁL: B. 5.  
BOD: A. 3., 1. 4.





kv. KLOPOVÁNE  
MATERIÁL: 13.8.  
BOD: 1.3. 1.4.

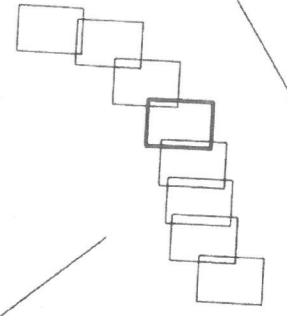
1.1. Kuchnia 1



Kuchnia

MATERIAŁ: 13.5.

BOD: 1.3., 1.4.



Q  
1/6

1/11

1/10

1/1

82/1

82/2





82/1

82/2

371/1

371/2

376

37

54/5

1/8

k. v. k. P. O. P. O. V. K. E.

MATERIÁL: 13.5.  
BOD: 1.3., 1.4.

36/5

39

138

452

182

38

380  
380/2

113-139

291  
113-136

167

446

1/2

113-137

375

53/1

169/

1/12

207  
205

203

62/1

380/4

53/2

349

655

202

422

350

500

201

113-132

505

200

352

200

355

290

356

00



E. u. KROPOTVICE  
 MATERIÁL: 13.5.  
 BOD: 1.3., 1.4.

Q 53/2

94

Q 62/3

Q 62/2

62/1

Q 430

V. 1/2

Q 431/1

Q 431/2

36/3

36/2

36/8

36/1

403

86/7

81



MATERIÁL: 13,5.  
BOD: 1.3, 1.4.

L. U. KLOBUKOVICE

86/7

403

86/8

116-182 1.70 390 430 439

86/9

402

85/3

136

131

88

99

409

84/1

84/2

83

65

98

81

430

80

89

380  
380/2

434

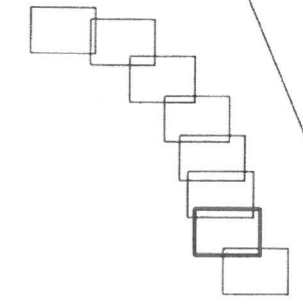
380/3

15.00

380/4

63/2

53/3





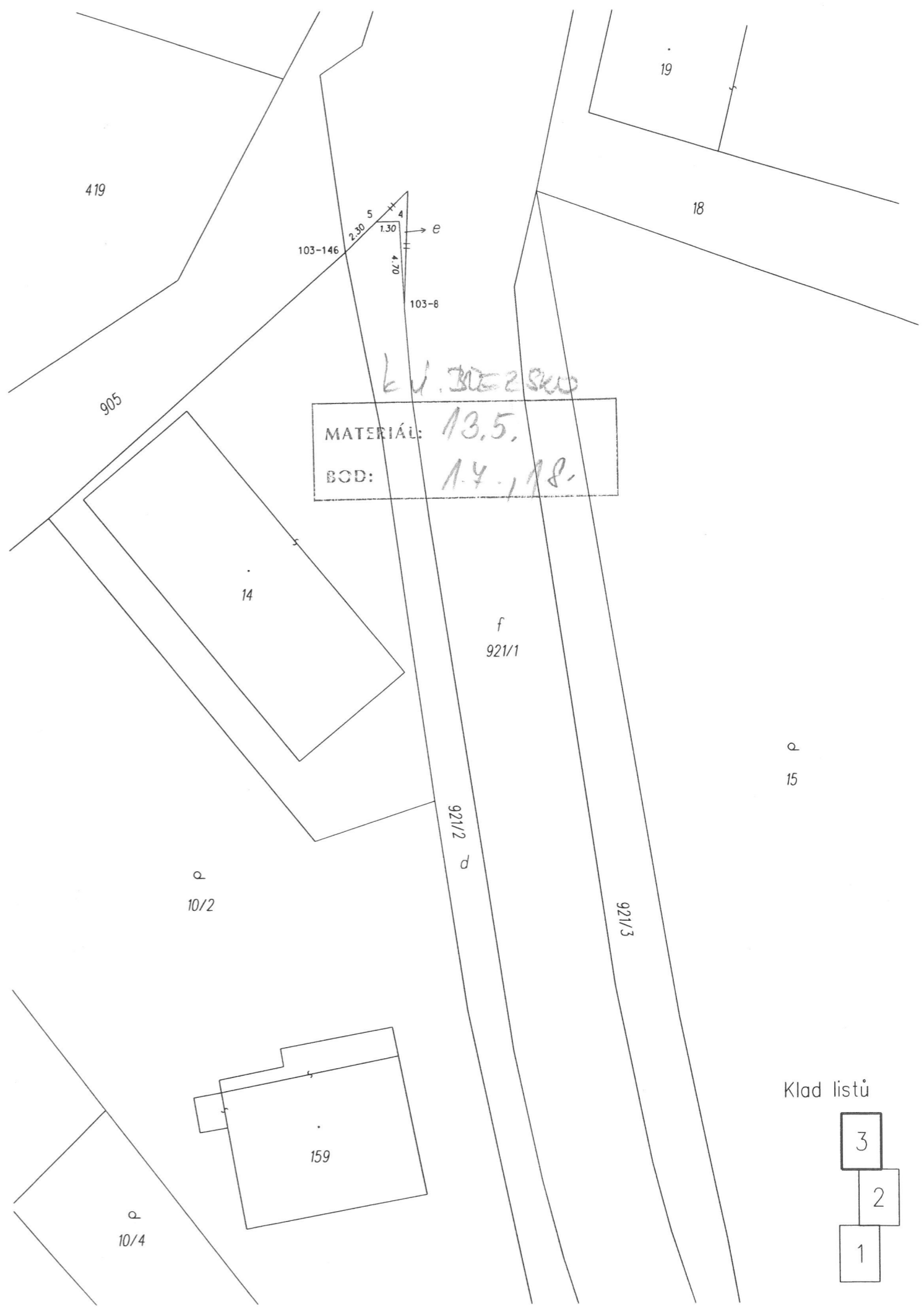
MATERIAL: 13.5.  
 BOD: 15.1.16.  
 K.u. Travnice





Klad listů

- 3
- 2
- 1



Klad listů

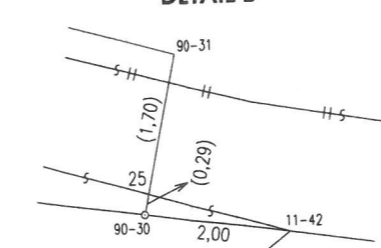
- 3
- 2
- 1



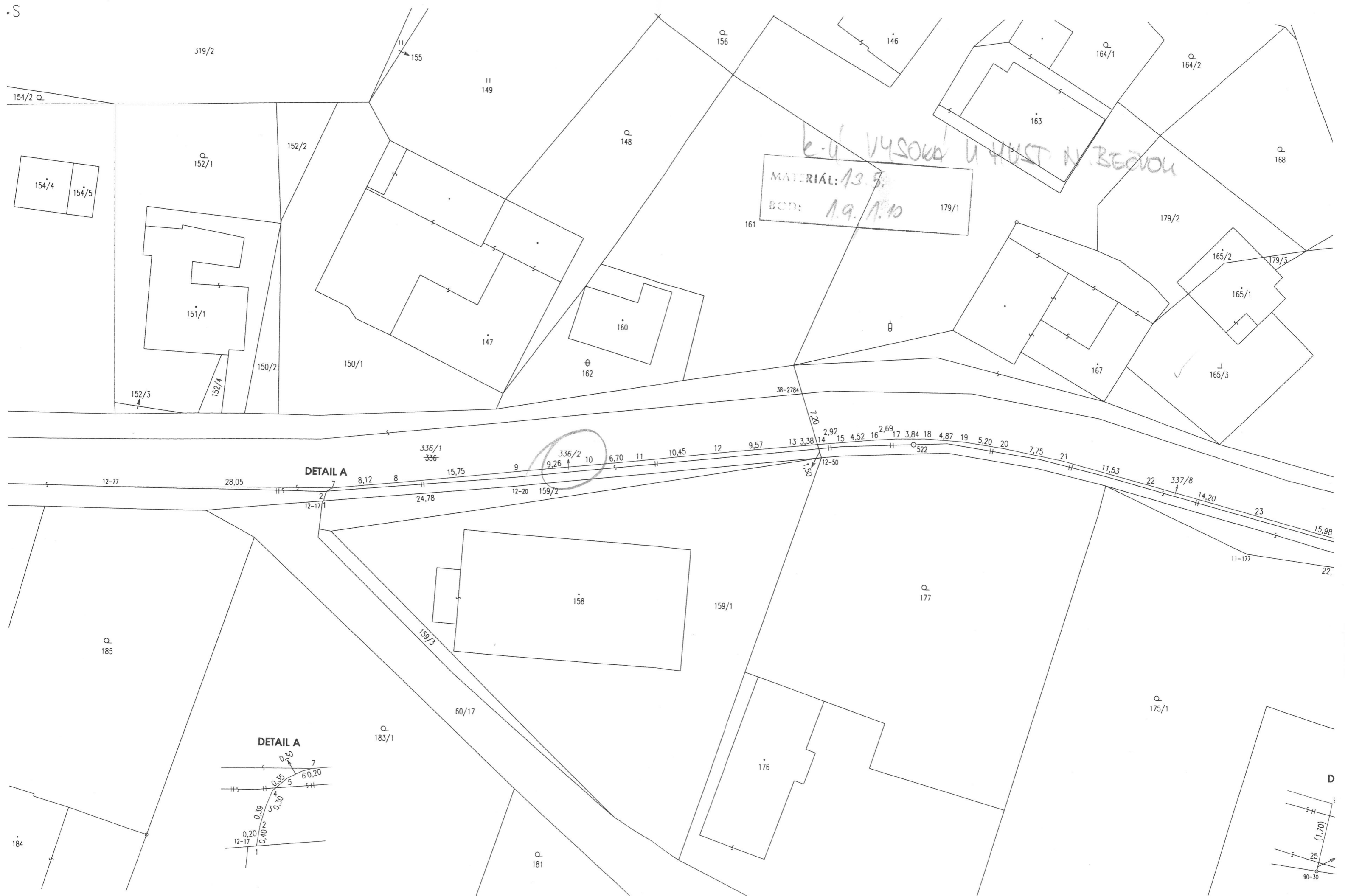
L. V. VYSOKA U HUST. N. B.  
13.5.  
1.9. 1.10.

DETAIL B

DETAIL B

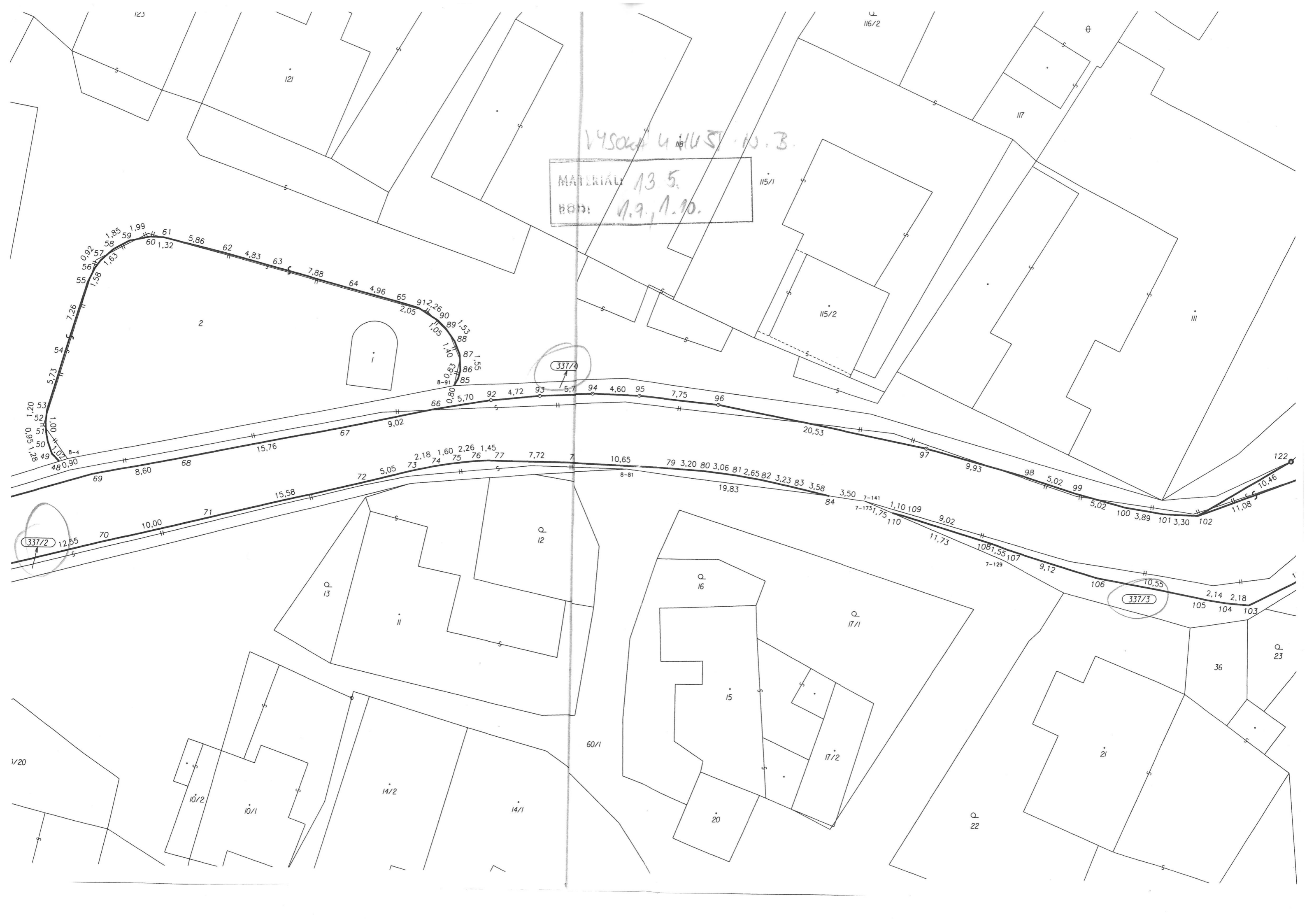


S



VYSOKÁ 4 HUST. 10. B.

MATERIAL 13 5.  
BOD: 1.9, 1.10.



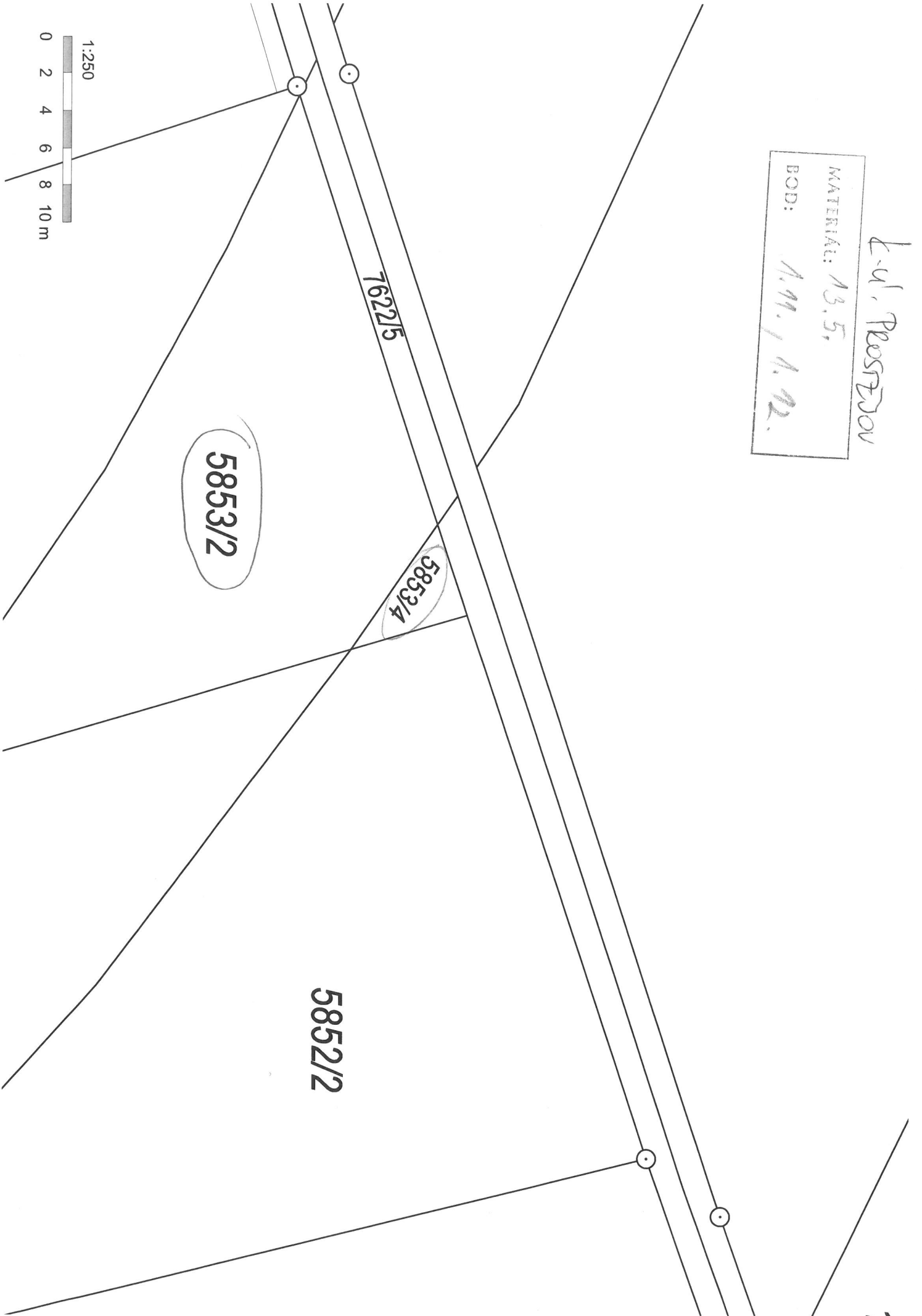


L-41, PROSTEDOV

MATERIAU: 13.5,

BOD:

1.11.14.12.



1:250  
0 2 4 6 8 10 m

MATERIAL: 135  
JOB: A.M., 112.

L.V. PROSTEDEN

5879/7

5879/8

5817/4

5880/1

5880/3

5881/5

5816/2

5881/4

5884/6

5884/7

5815/4

31/3

5884/5

5885/3

5885/5

5893/4

7618/2

5814/52

5885/2

5896/2

5893/2

5893/5

5894/4

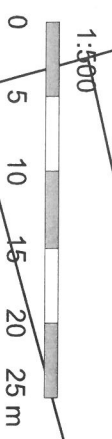
5814/50

5814/51

5813/2

5813/3

3



5805/4

MATERIAK: 1/35.  
BOD: 19.7/12.

L. V. PROSTĚJOV

5862/3

5863/2

5864/4

5865/5

5866/5

5867/5

5868/2

5869/9

5868/4

5869/7

5870/4

5871/2

5872/1

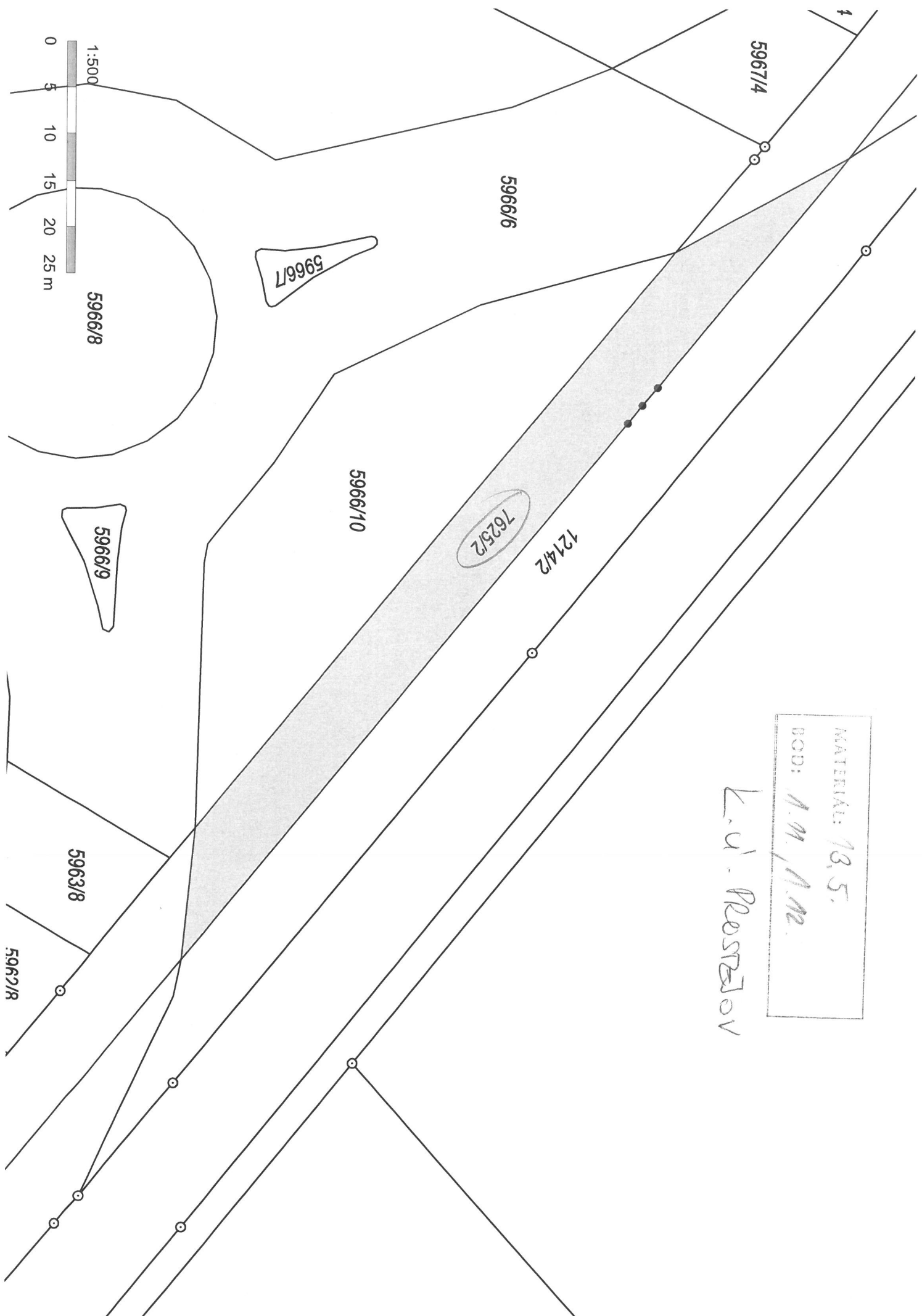
1:500

0 5 10 15 20 25 m



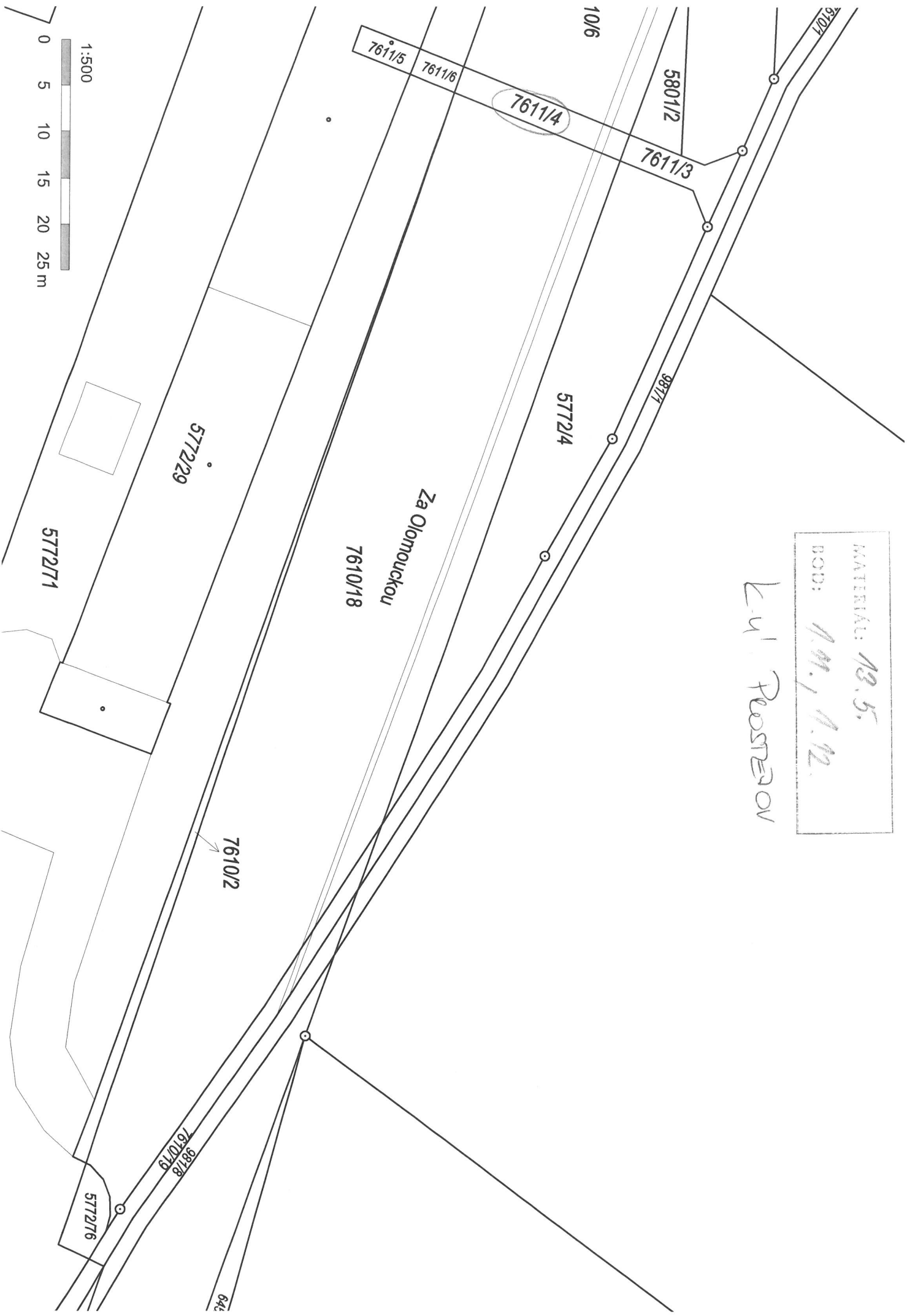
MATERIAL: 13,5.  
BOB: A.M./A.M2.

L.V. PROSTOV

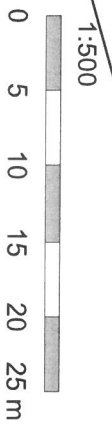
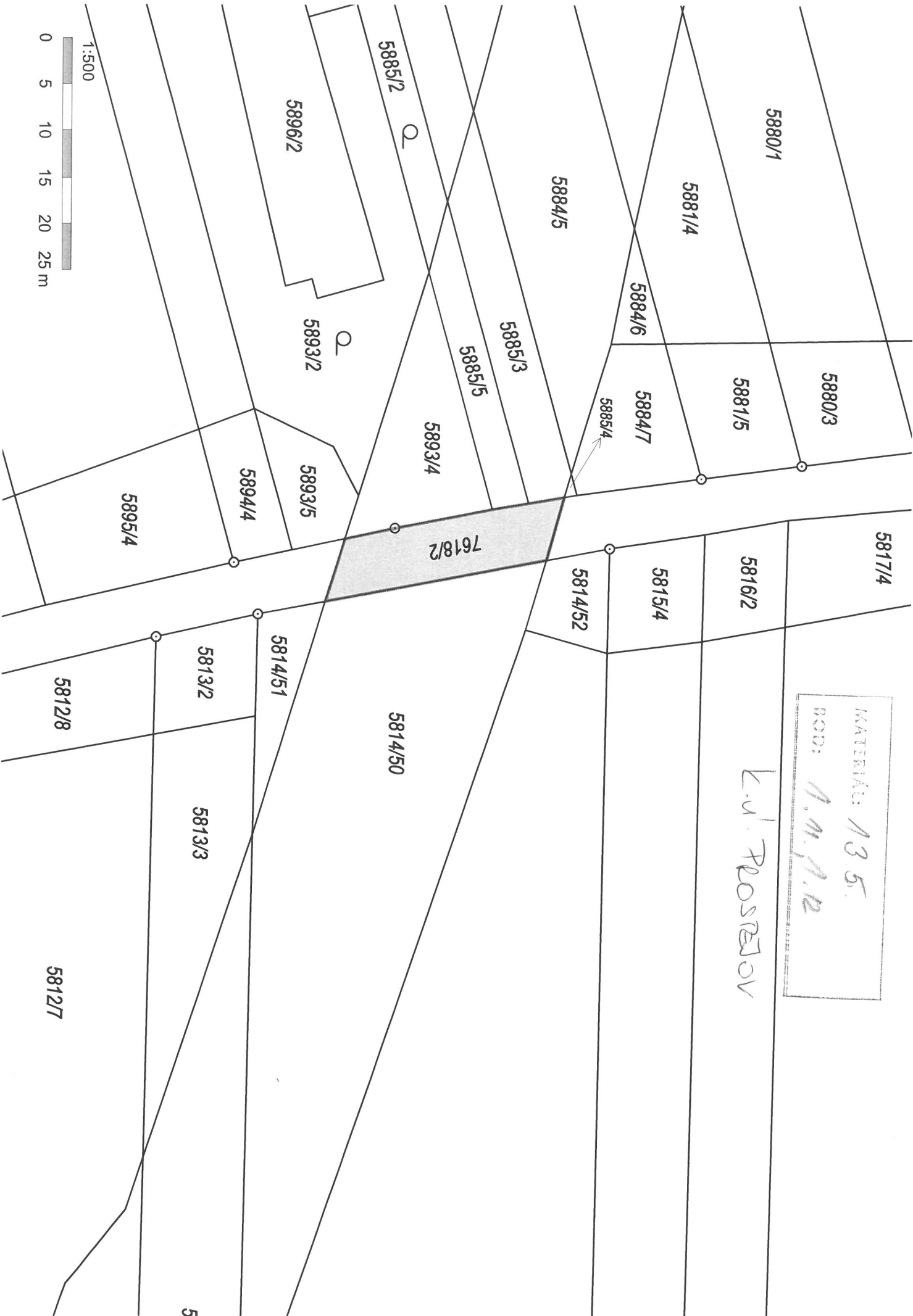


MATERIÁL: 13.5.  
ROD: 1. M. 1. 12.

L-41 PŮSTĚNOV



MATERIA: 135.  
ROD: 1.11.12  
L.V. PROSTOR



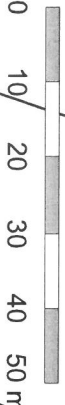
MATERIAL: 13.5.  
POS: 1.11.1.12.

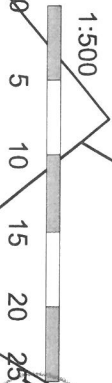
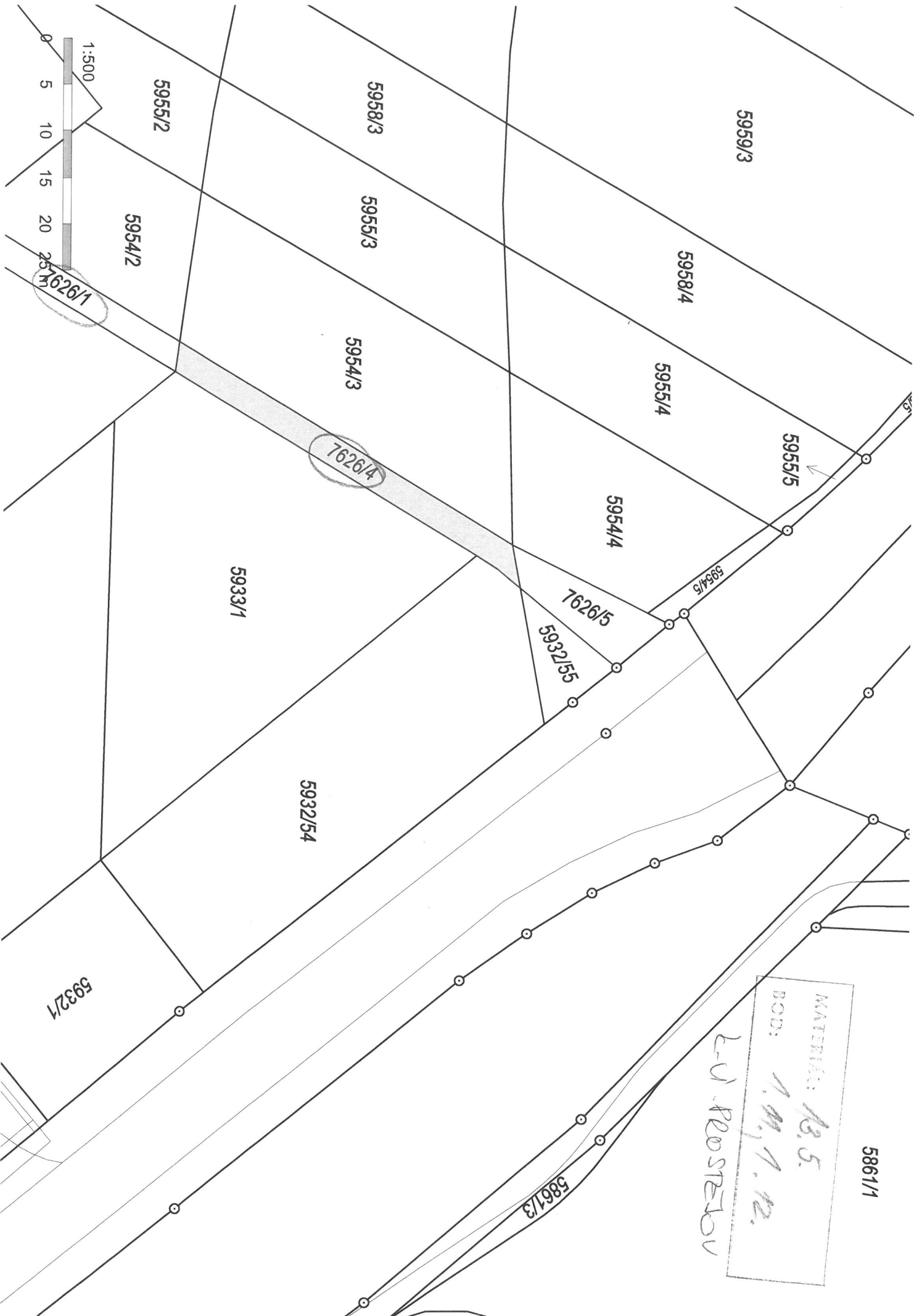
*B.V. PROSTĚJOV*



2/35

1:1 000





7626/1

5955/2

5954/2

5958/3

5955/3

5954/3

7626/4

5933/1

5932/54

5959/3

5958/4

5955/4

5955/5

5954/4

7626/5

5932/55

5954/5

5932/1

MATERIA: 13.5  
BOD: 1.11.1.12.  
L.V. PROSTOROV

5861/1

5861/3



КАТЕРИАЛ: 13.5.  
НОМ: 4.91.17.12.

Л.И. РАДСТЕВ

