



145.
1.1.192

k.v. MOZAVSKA KUZAR

38/1

14

15/1

15/2

18

19

22

14

64

914/1

120

63

914/3

121

914/2

68/2

67

65

62

60

68

915/1

915/10

928/3

928/4

6720

928

928/1

3703

151 211

11 65

14 45

083 074

10 11

520

430

12

1530

13

806

14

1645

15

721

227-657

2800

17

162

1440

227-674

227-560

227-616

227-625

227-657

227-674

192

992

2

1700

1035

227-560

1.1

1440

227-674

1440

227-674

1440

227-674

30

11 65

14 45

10 11

520

430

12

1530

13

806

14

1645

15

721

227-657

2800

17

162

1440

227-674

1440

227-674

1440

227-674

1440

227-674

1440

227-674

1440

227-674

1440

227-674

1440

227-674

1440

227-674

1440

227-674

1440

227-674

1440

227-674



MATEŘINA: 44.5
 BOB: 1.9.1.2

kv. Moravský újezd

Lenka Pacáková
 2023.05.16 12:58:53
 Signer:
 CN=Lenka Pacáková
 C=CZ
 O=Obec Štěpánov
 2.5.4.97=NTRCZ-00299511
 Public key:
 RSA/2048 bits

128

MATERIÁL: 14.5.
BOD: 1.1., 1.2.

+
94

K. V. MORAVSKÁ HUZOVÁ

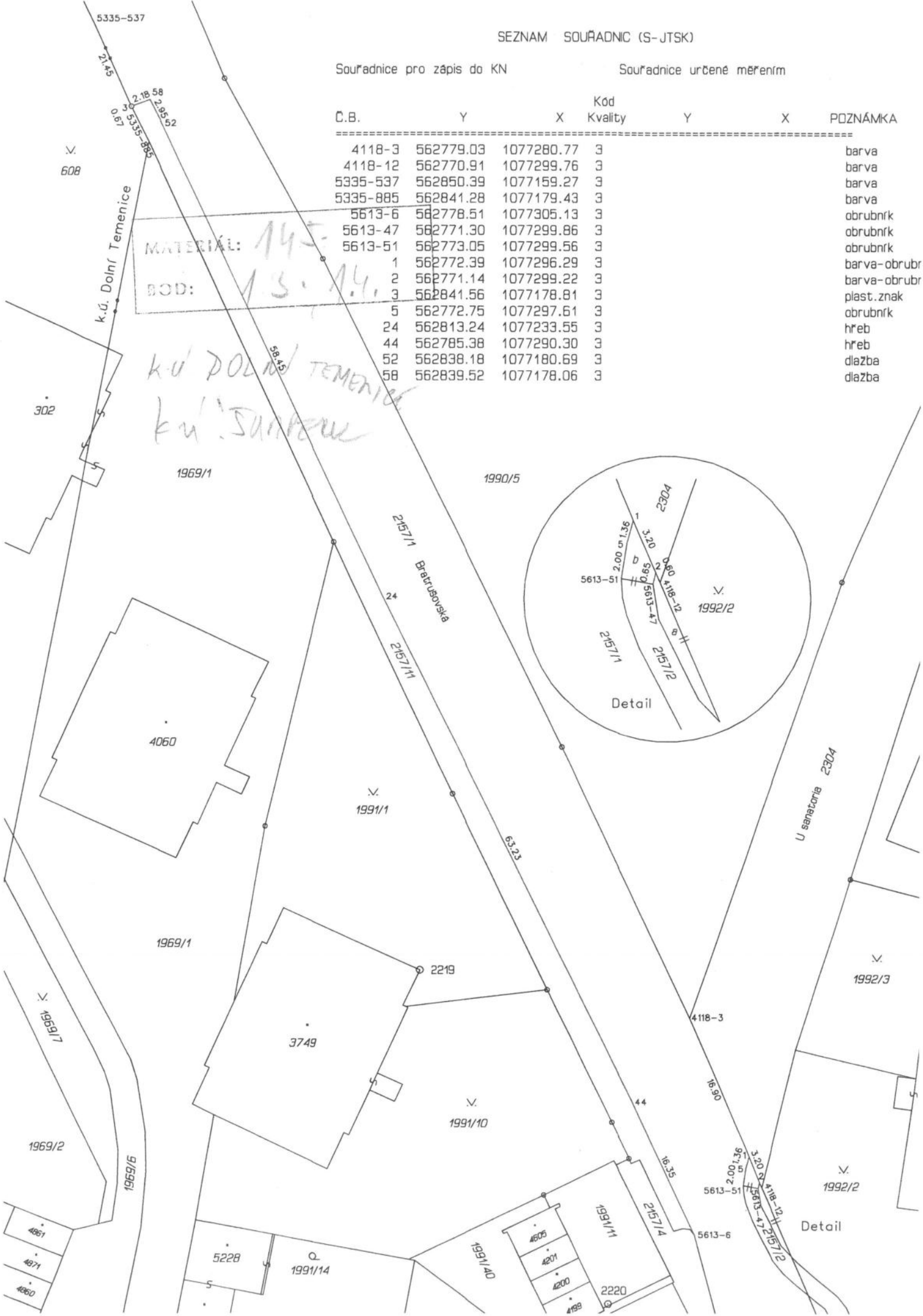


SEZNAM SOUŘADNIC (S-JTSK)

Souřadnice pro zápis do KN

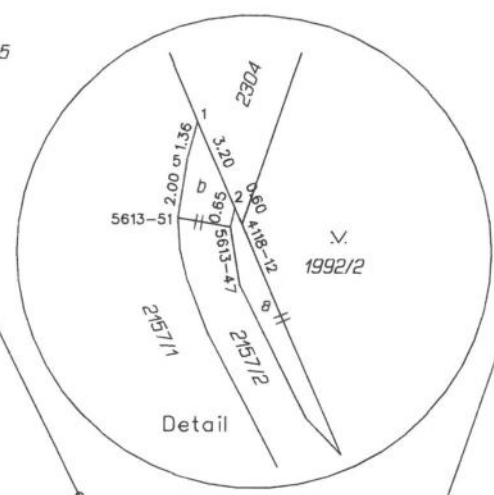
Souřadnice určené měřením

Č.B.	Y	X	Kód Kvality	Y	X	POZNÁMKA
4118-3	562779.03	1077280.77	3			barva
4118-12	562770.91	1077299.76	3			barva
5335-537	562850.39	1077159.27	3			barva
5335-885	562841.28	1077179.43	3			barva
5613-6	562778.51	1077305.13	3			obrubník
5613-47	562771.30	1077299.86	3			obrubník
5613-51	562773.05	1077299.56	3			obrubník
1	562772.39	1077296.29	3			barva-obrubr
2	562771.14	1077299.22	3			barva-obrubr
3	562841.56	1077178.81	3			plast.znak
5	562772.75	1077297.61	3			obrubník
24	562813.24	1077233.55	3			hřeb
44	562785.38	1077290.30	3			hřeb
52	562838.18	1077180.69	3			dlažba
58	562839.52	1077178.06	3			dlažba



MATERIÁL: 145
BOD: 13, 14

k.ú. DOLNÍ TEMENICE
k.ú. JANKOVSKÁ



U sanatoria 2304

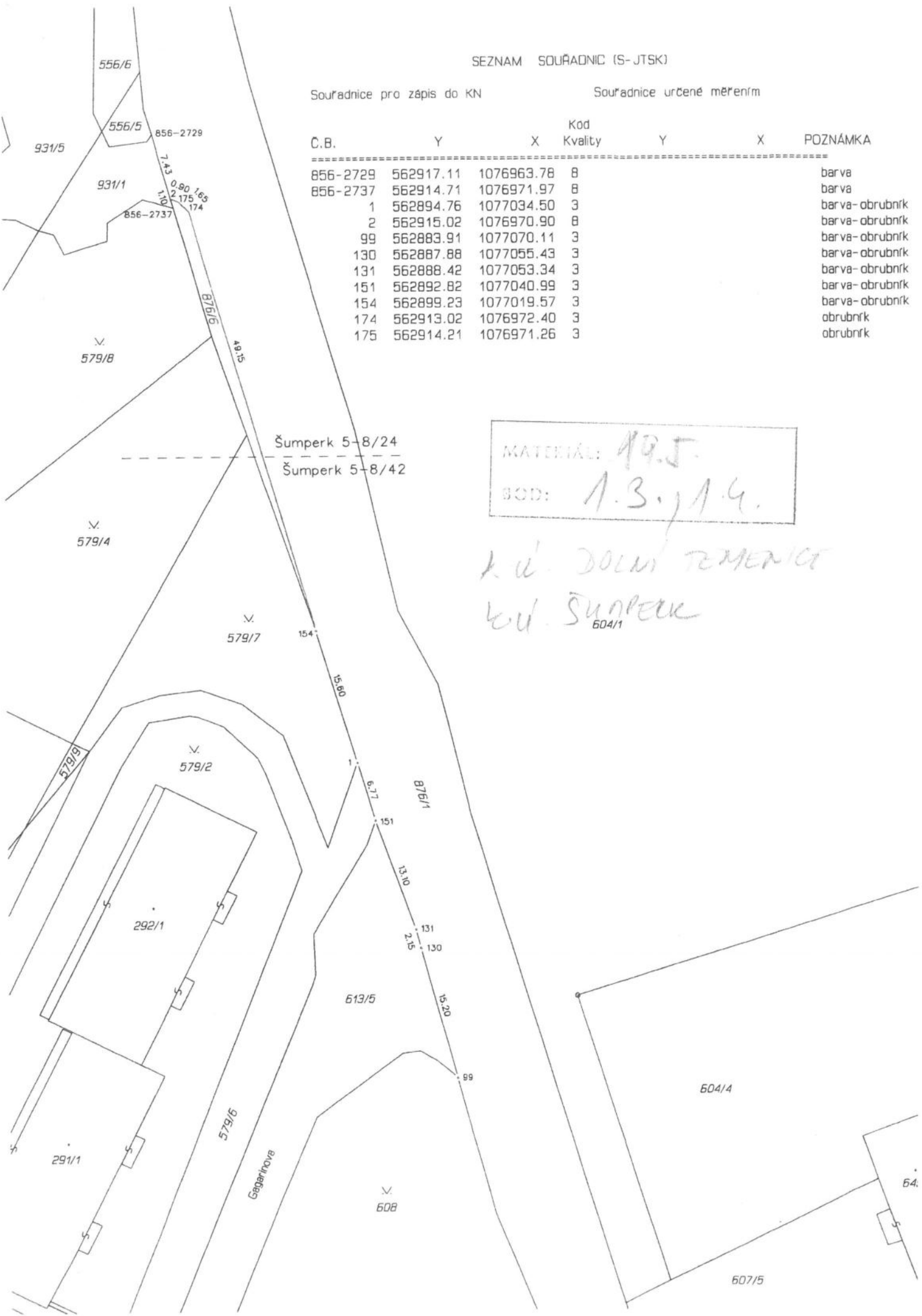
Detail

SEZNAM SOUŘADNIC (S-JTSK)

Souřadnice pro zápis do KN

Souřadnice určené měřením

Č.B.	Y	X	Kod Kvality	Y	X	POZNÁMKA
856-2729	562917.11	1076963.78	8			barva
856-2737	562914.71	1076971.97	8			barva
1	562894.76	1077034.50	3			barva-obrubiř
2	562915.02	1076970.90	8			barva-obrubiř
99	562883.91	1077070.11	3			barva-obrubiř
130	562887.88	1077055.43	3			barva-obrubiř
131	562888.42	1077053.34	3			barva-obrubiř
151	562892.82	1077040.99	3			barva-obrubiř
154	562899.23	1077019.57	3			barva-obrubiř
174	562913.02	1076972.40	3			obrubiř
175	562914.21	1076971.26	3			obrubiř

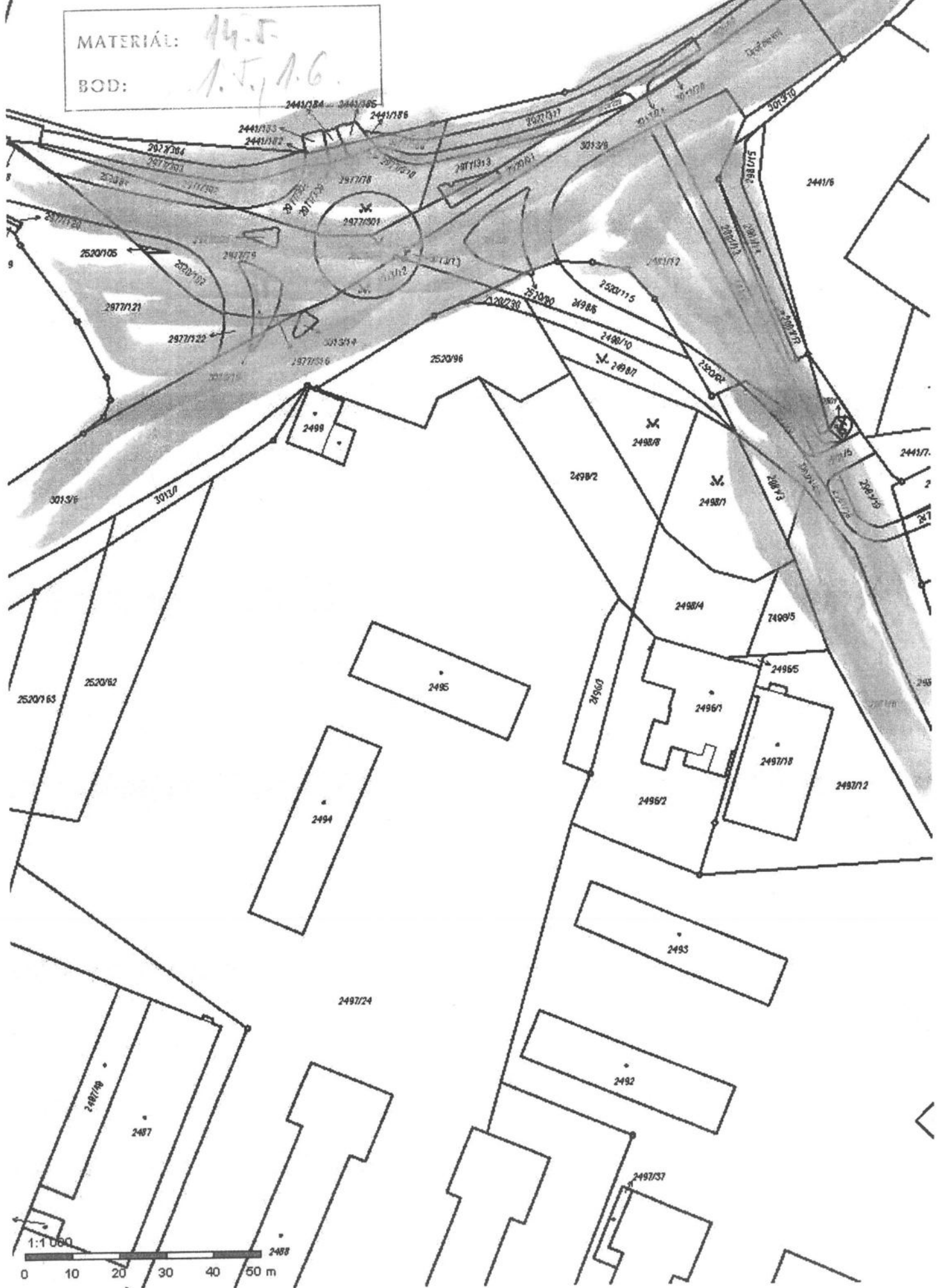


MATERIÁL: 49.5
 BOD: A.3., A.4.

k u. DOLNÍ TEMENICE
 k u. ŠUMPERK 604/1

K.Ú. MOHĚLNICE

MATERIÁL: 14.5
BOD: A. J. A. G.



K U. DĚŤO VANTCE

WATER: 14.5.
NO: 14, 18

1209/4

1209/2

132-11A

1305

1409

1409/1

37-43

37-42

1216/3

575-2

158

260

159

580

555

270

167

1409/6

170

2785

1180

171

432-1748

850

172

280

173

280

174

275

175

1208/4

1409

1409/2

161

1409

154

432-1745

980

153

4400

37-45

520

162

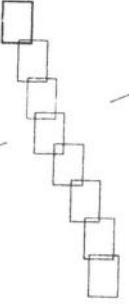
163

505

1216/5

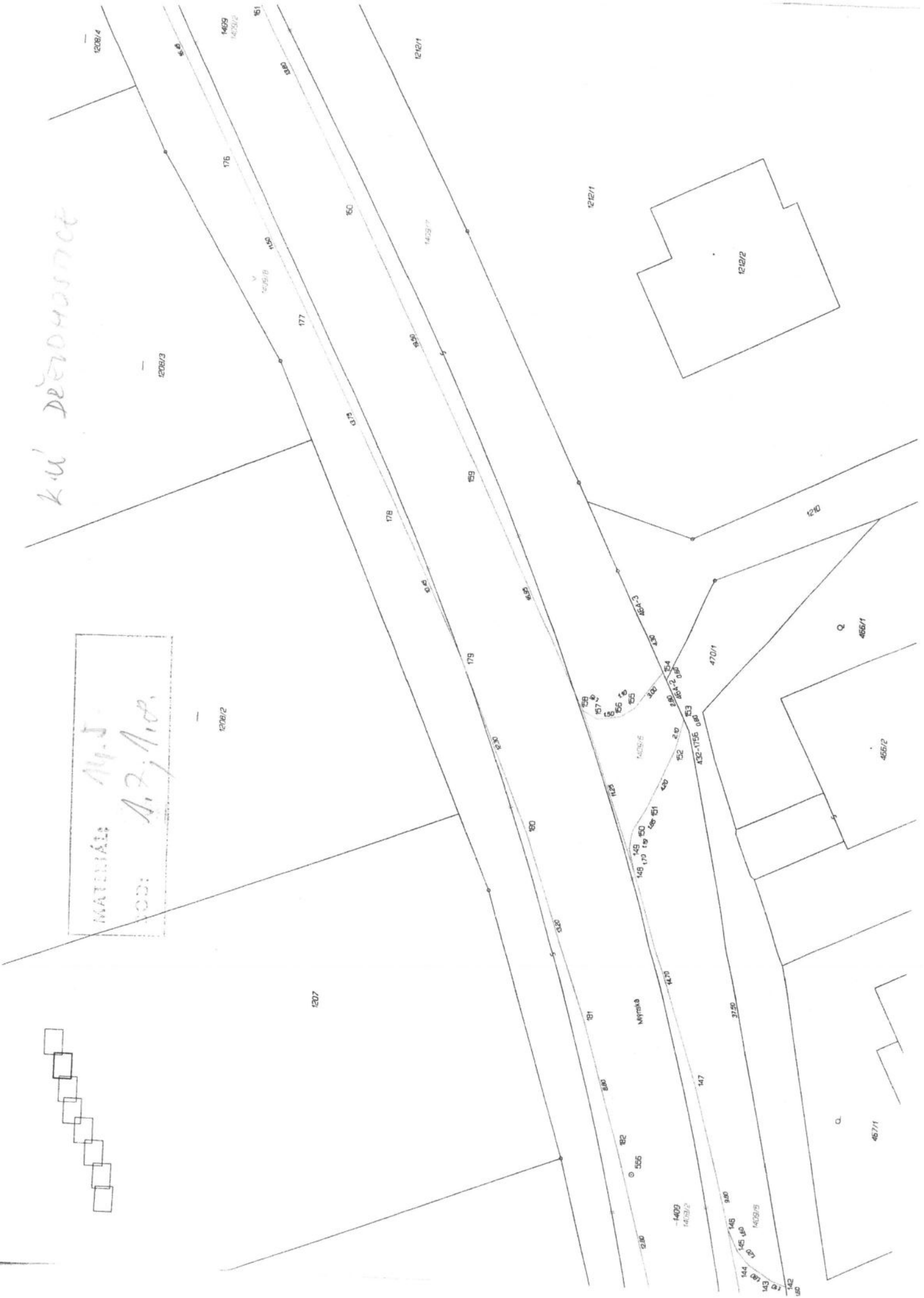
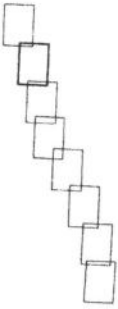
1212/1

enr?



KU' DEEDHOORDE

MATERIA: A. J.
COD: A. 2, A. 10.



k. u. DĚVOUHOŠTICE

MATEŘIÁL: 14. J.
ROD: 1. 7, 1. 8.



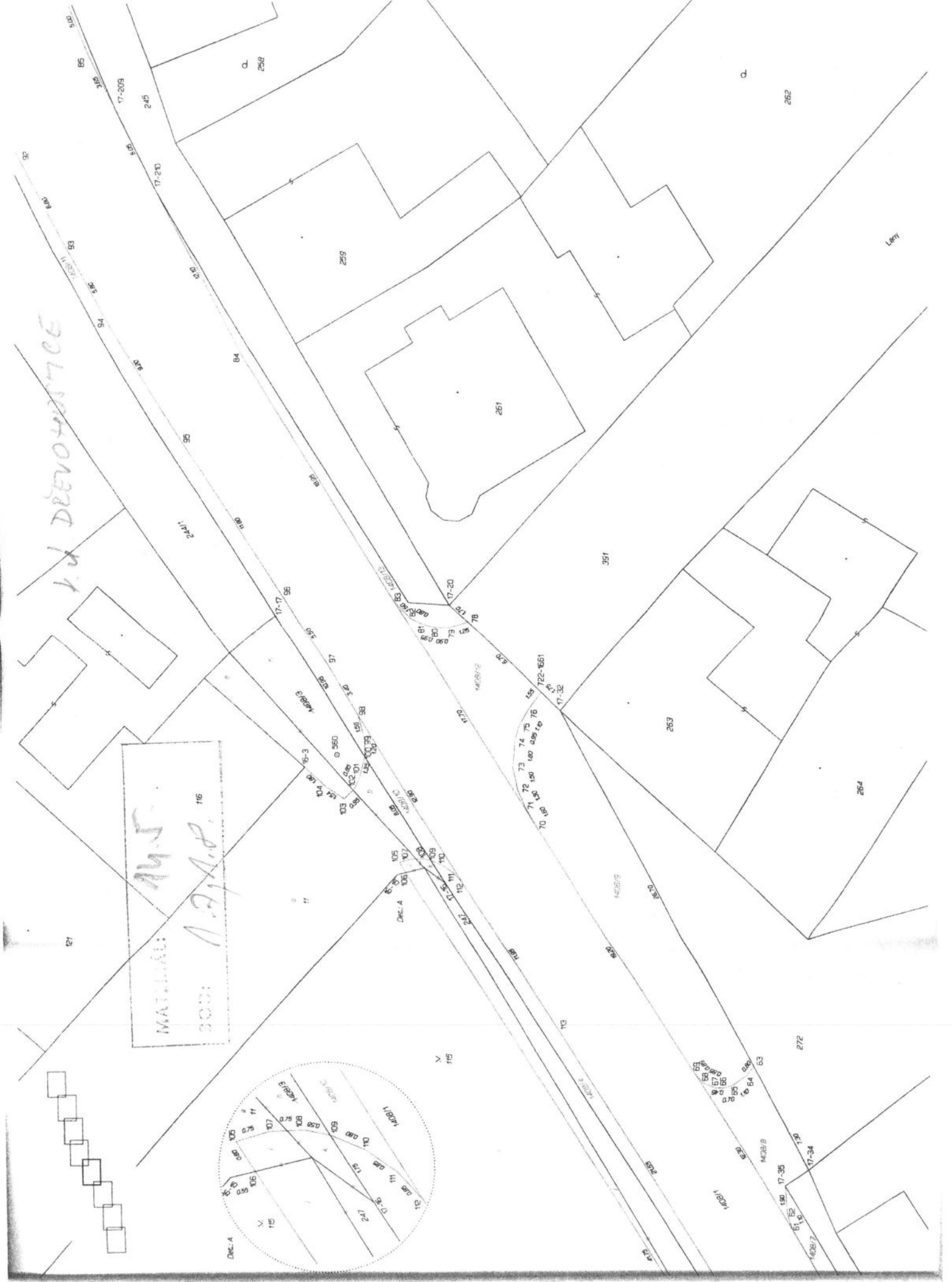
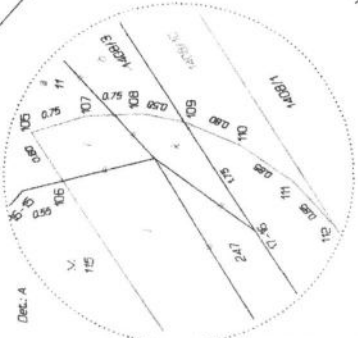
L.d. DĚLOVOU 0705

MATEŘIÁL: 14. J. 165/1
ČÍSLO: 1.7, A. P.



K. DEVOHANCE

MATERIAL: M.S.
SOIL: A.S.P. 115



K. U. DŘEVOHOSŤEG

MATERIÁL: 14-5
SOD: 1. 7. 1. A. 8.



112

114

111

113

115

273

274

275

276

277

278/1

278/2

279/1

279/2

281

280

283

286

285

14. ДИВНОХОСТЕЕ

№: 145
A.P. / A.P.
SOD: 803



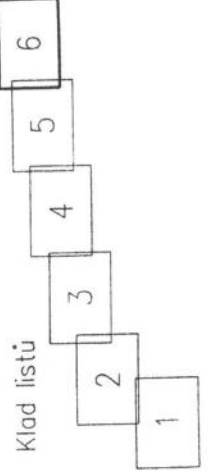
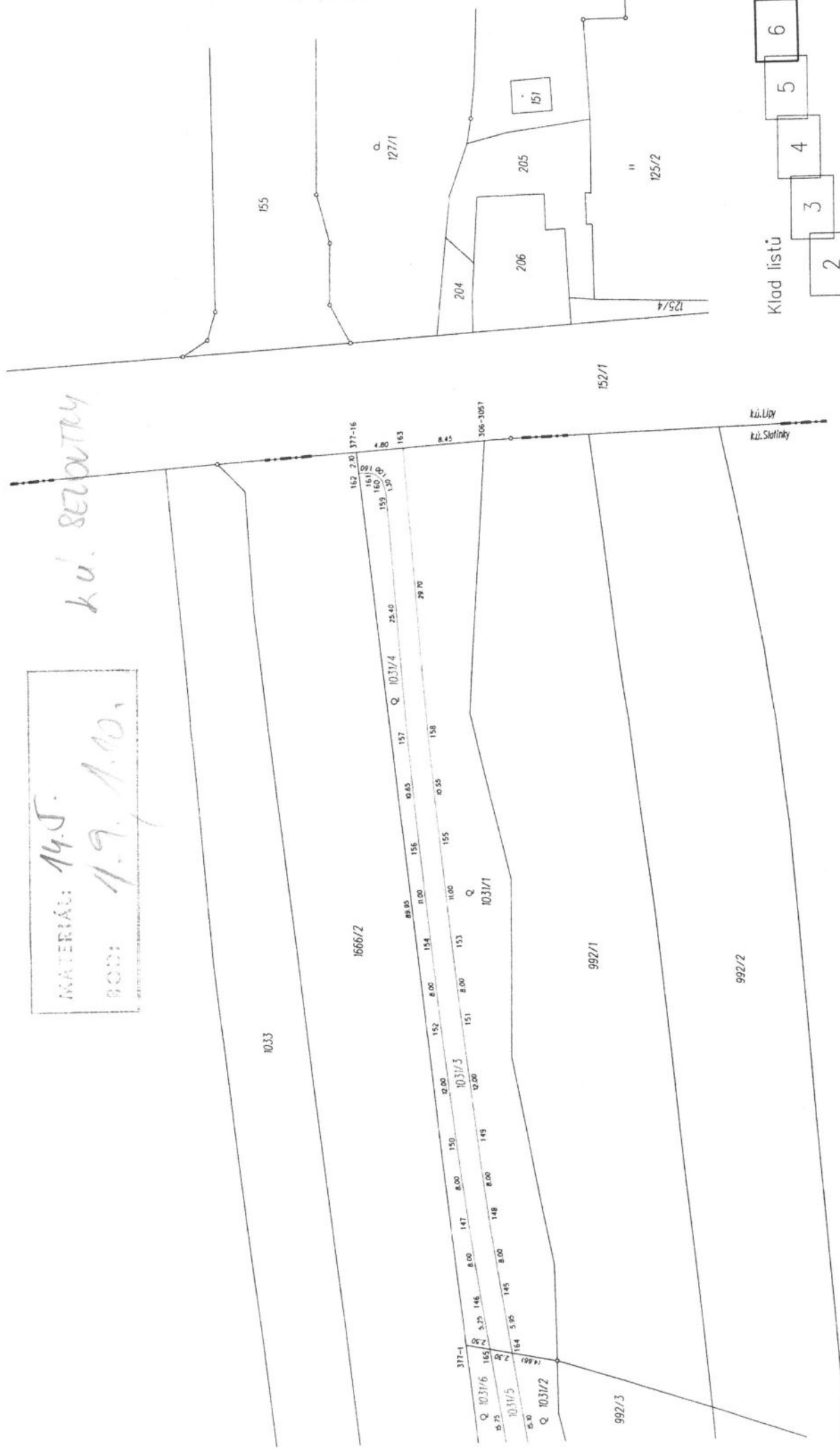


11.7, A.P.

WATER
BOD:

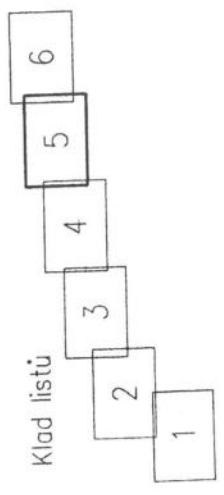
MATERIÁL: 14.5.
 ROD: 1.9. A.10.

k.ú. SEZOVÁTKY



k. u. SLOUTKY

MATERIAL: 145.
BOD: 19. 1. 10.



1034

1057

1412

MATERIAŁ: 14.5.
 1058/1: 1.9.1.10.
 1058/2

122 22.00 119 13.00 118 Q 1031/6 10.00 117 13.00 120 22.00 121 22.00

116 14.00 115 14.00 114 7.05 113 7.00 112 7.05 111 7.00 110 5.10 109 5.00 108 4.00 107 4.00 106 4.05 105 2.15

100 6.80 99 5.20 98 2.85 97 2.45 96 5.40 95 1.04

1666/2

1058/1

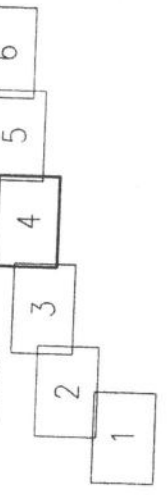
1058/2

991

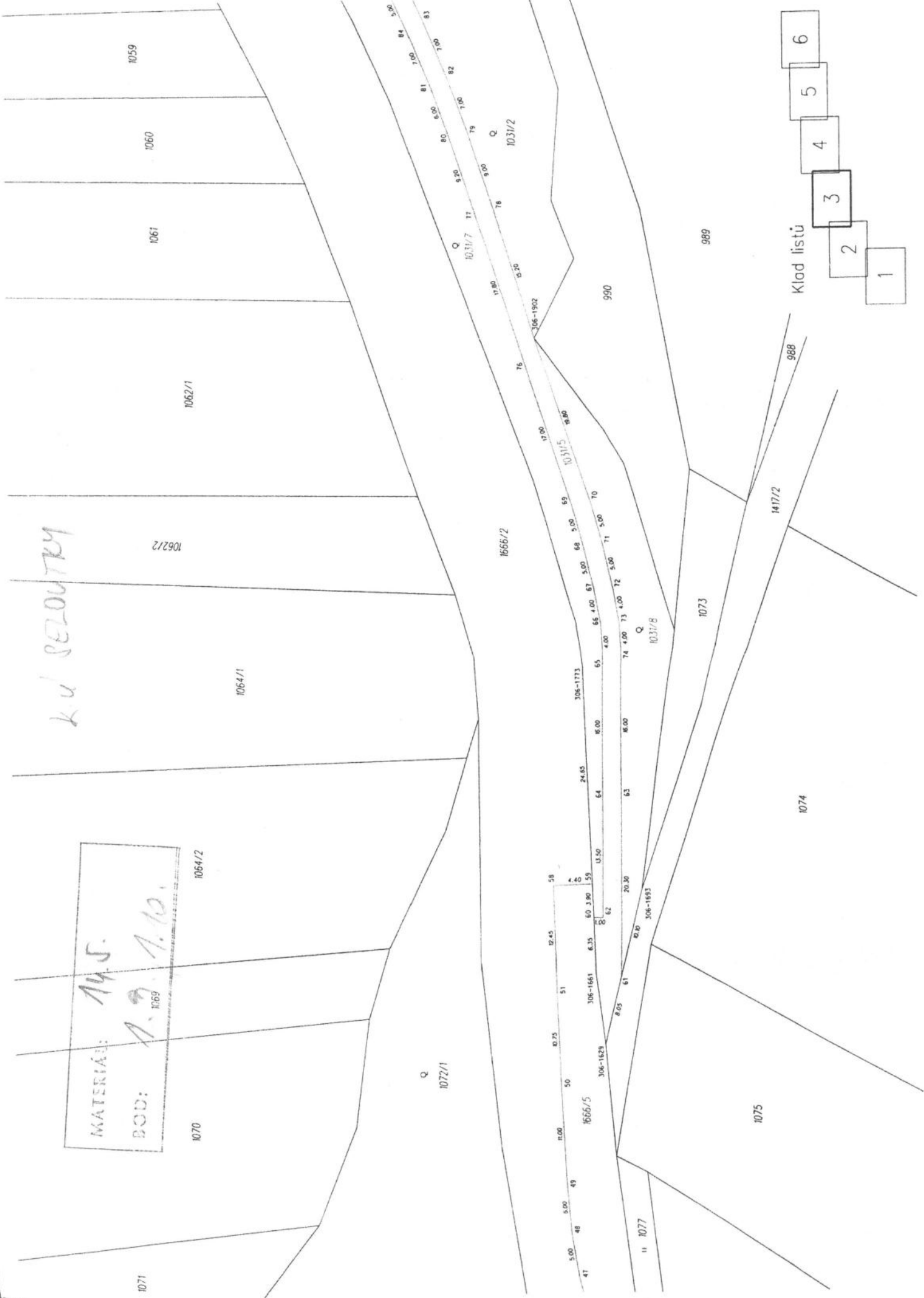
990

Q 1031/7 84 5.00 85 5.00 86 5.00 87 5.00 88 5.00 89 5.00 90 5.00 91 5.00 92 5.00 93 5.00 94 5.00 95 5.00 96 5.00 97 5.00 98 5.00 99 5.00 100 5.00

Kład listu

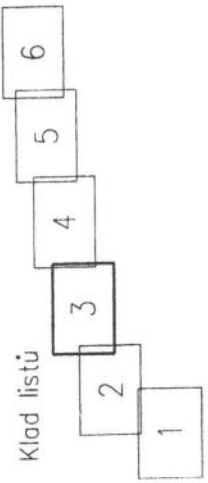


989



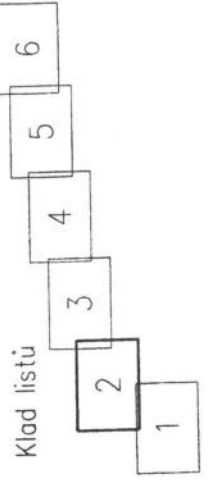
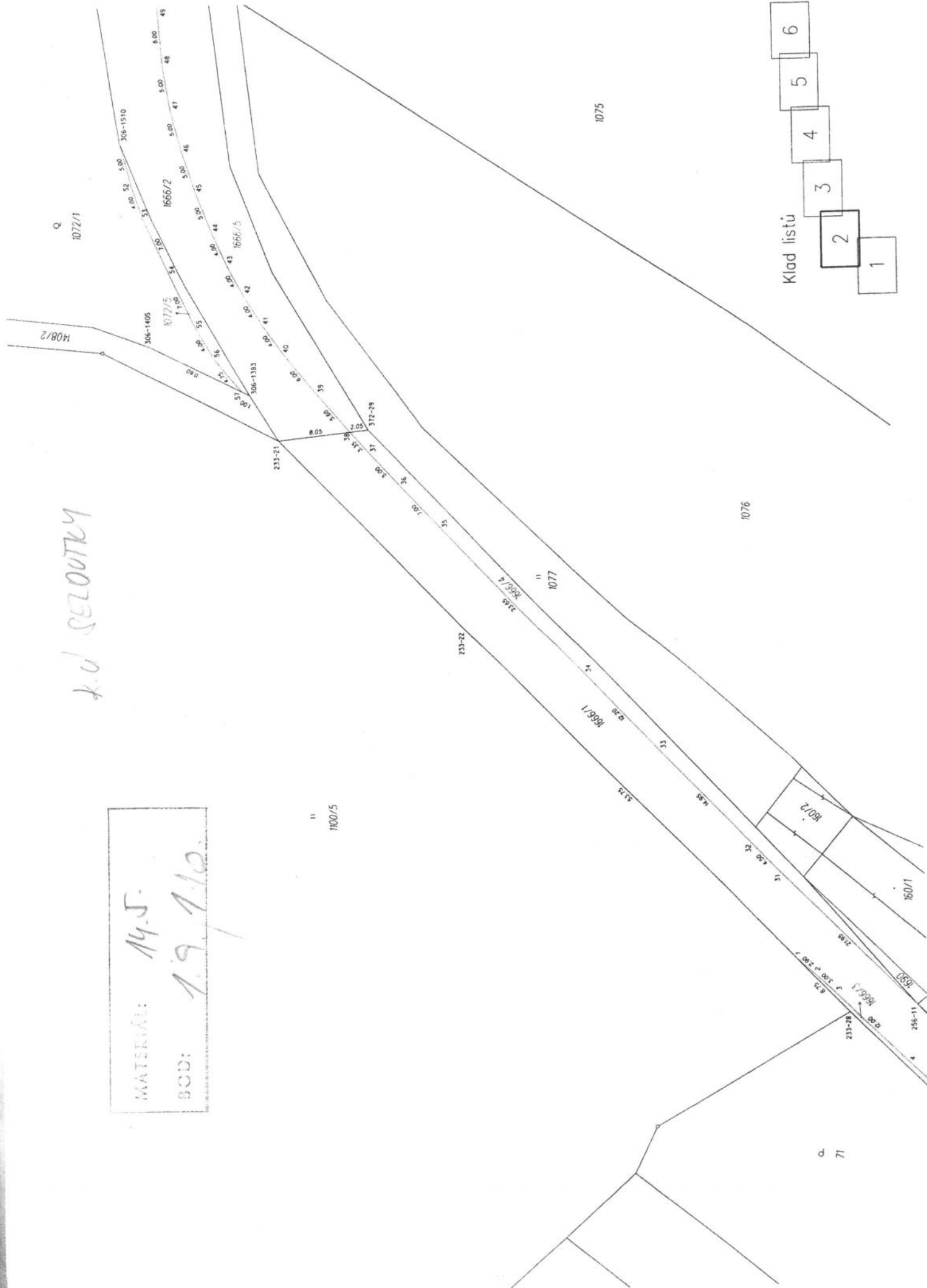
K. u. SELOUNŤKY

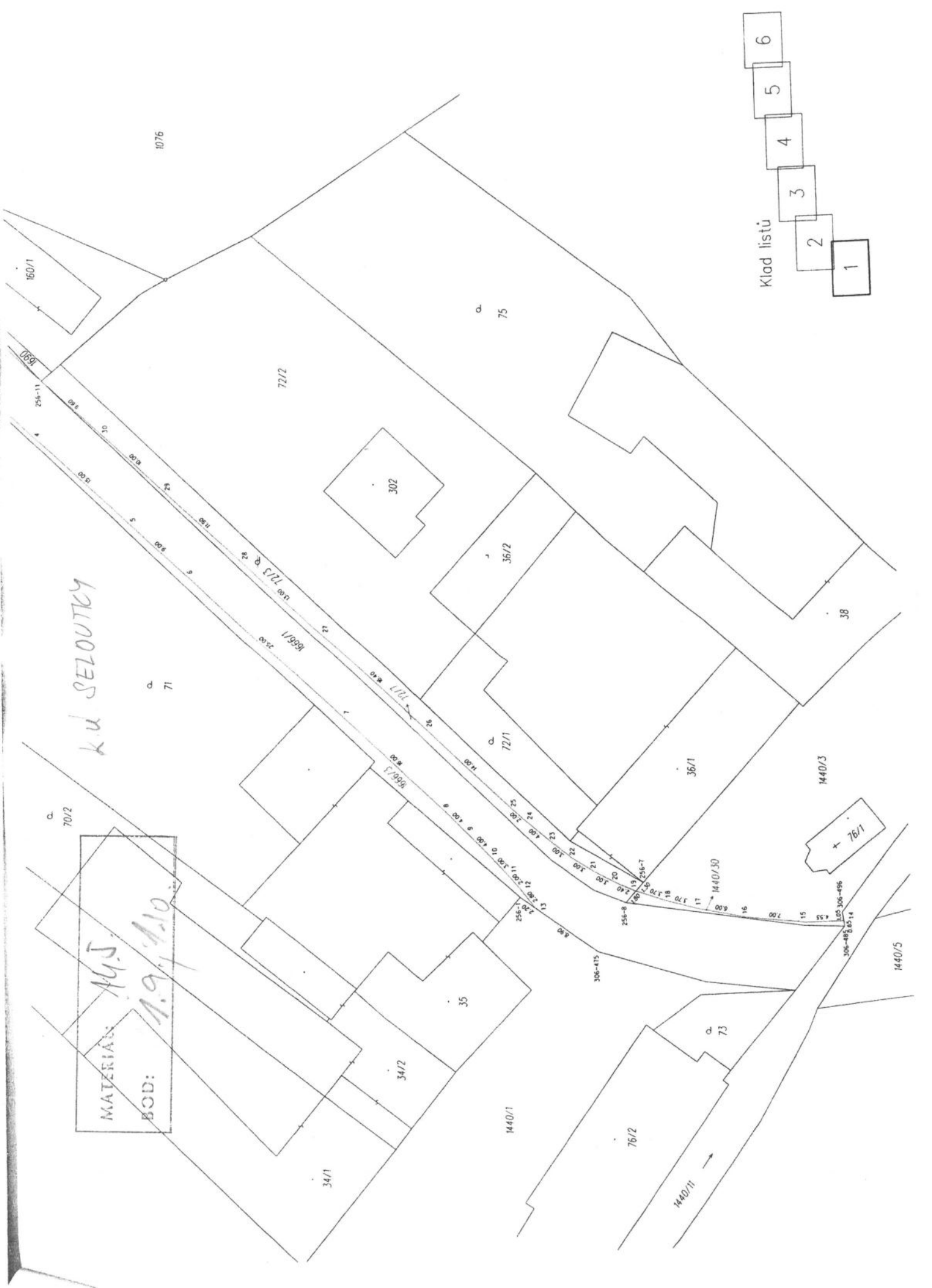
MATERIÁL: 14.5.
BOD: A. 9. 1. 10.
1070



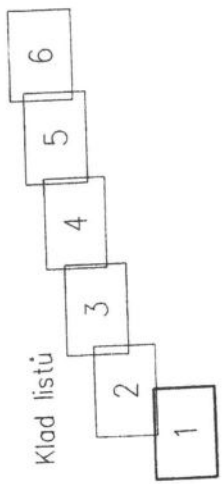
K. U. SELOUTKY

MATERIÁL: 14,5.
BOD: 19, 110.





Klad listů



ku SELOUTKY

MATEŘIA: *AGJ.*
 KOD: *A.9.10.*

1076

75

71

70/2

1440/1

76/2

73

1440/5

1440/3

38

34/1

34/2

35

302

36/2

36/1

72/2

866/1

866/2

866/3

866/4

866/5

866/6

866/7

866/8

866/9

866/10

866/11

866/12

866/13

866/14

866/15

866/16

866/17

866/18

866/19

866/20

866/21

866/22

866/23

866/24

866/25

866/26

866/27

866/28

866/29

866/30

866/31

866/32

866/33

866/34

866/35

866/36

866/37

866/38

866/39

866/40

866/41

866/42

866/43

866/44

866/45

866/46

866/47

866/48

866/49

866/50

866/51

866/52

866/53

866/54

866/55

866/56

866/57

866/58

866/59

866/60

866/61

866/62

866/63

866/64

866/65

866/66

866/67

866/68

866/69

866/70

866/71

866/72

866/73

866/74

866/75

866/76

866/77

866/78

866/79

866/80

866/81

866/82

866/83

866/84

866/85

866/86

866/87

866/88

866/89

866/90

866/91

866/92

866/93

866/94

866/95

866/96

866/97

866/98

866/99

866/100

1076

160/1

256-11

72/2

75

302

36/2

1

2

3

4

5

6

Klad listů

71

10. STAVBY

70/2

BOD:

MATERIA:

MATERIA:

BOD:

14.5

14.11

35

34/2

34/1

1440/1

76/2

73

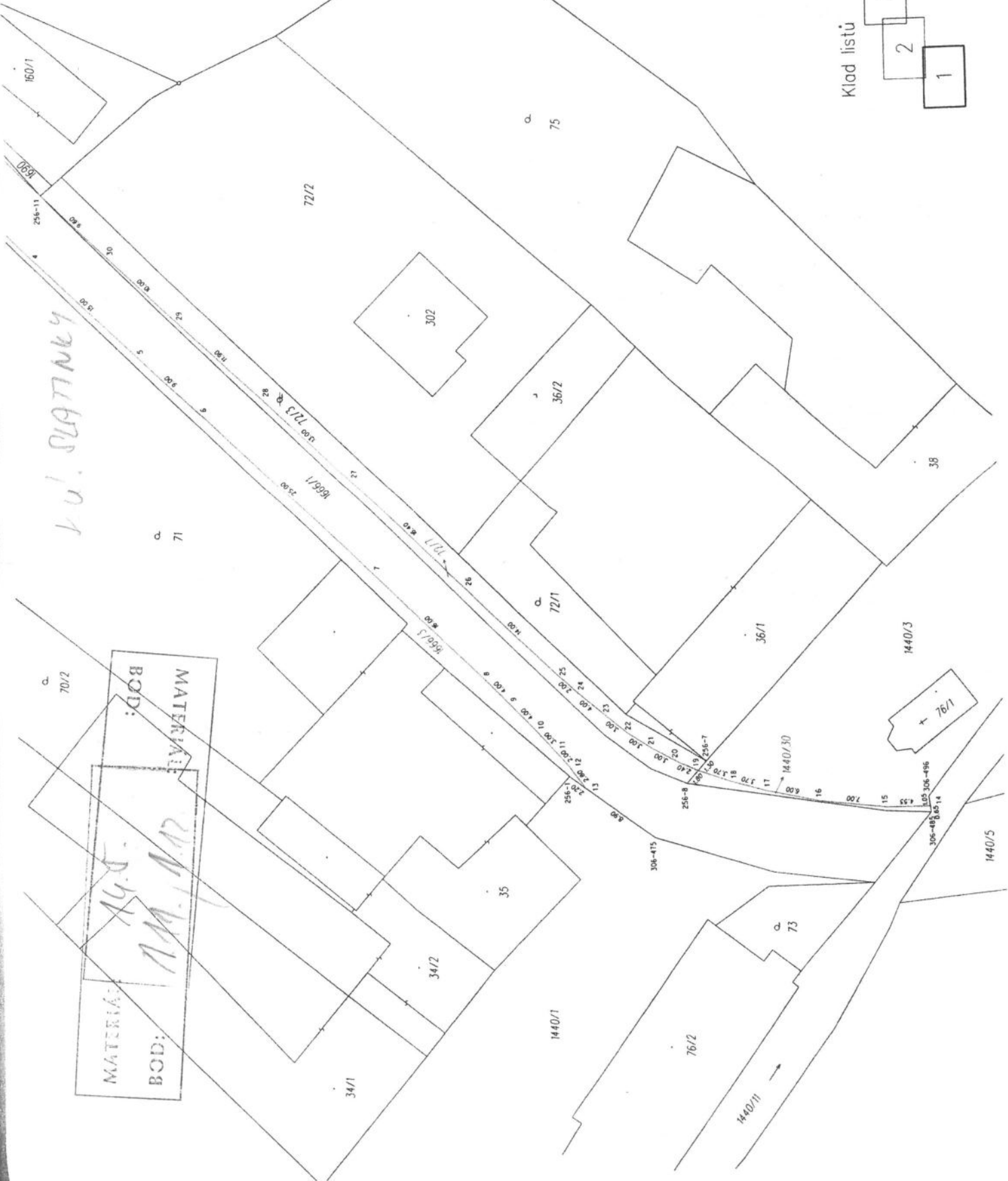
1440/3

76/1

1440/5

1440/5

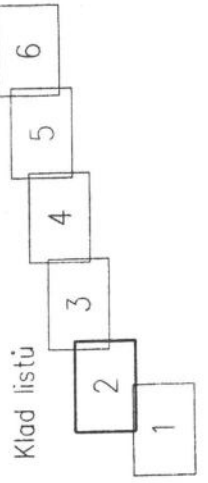
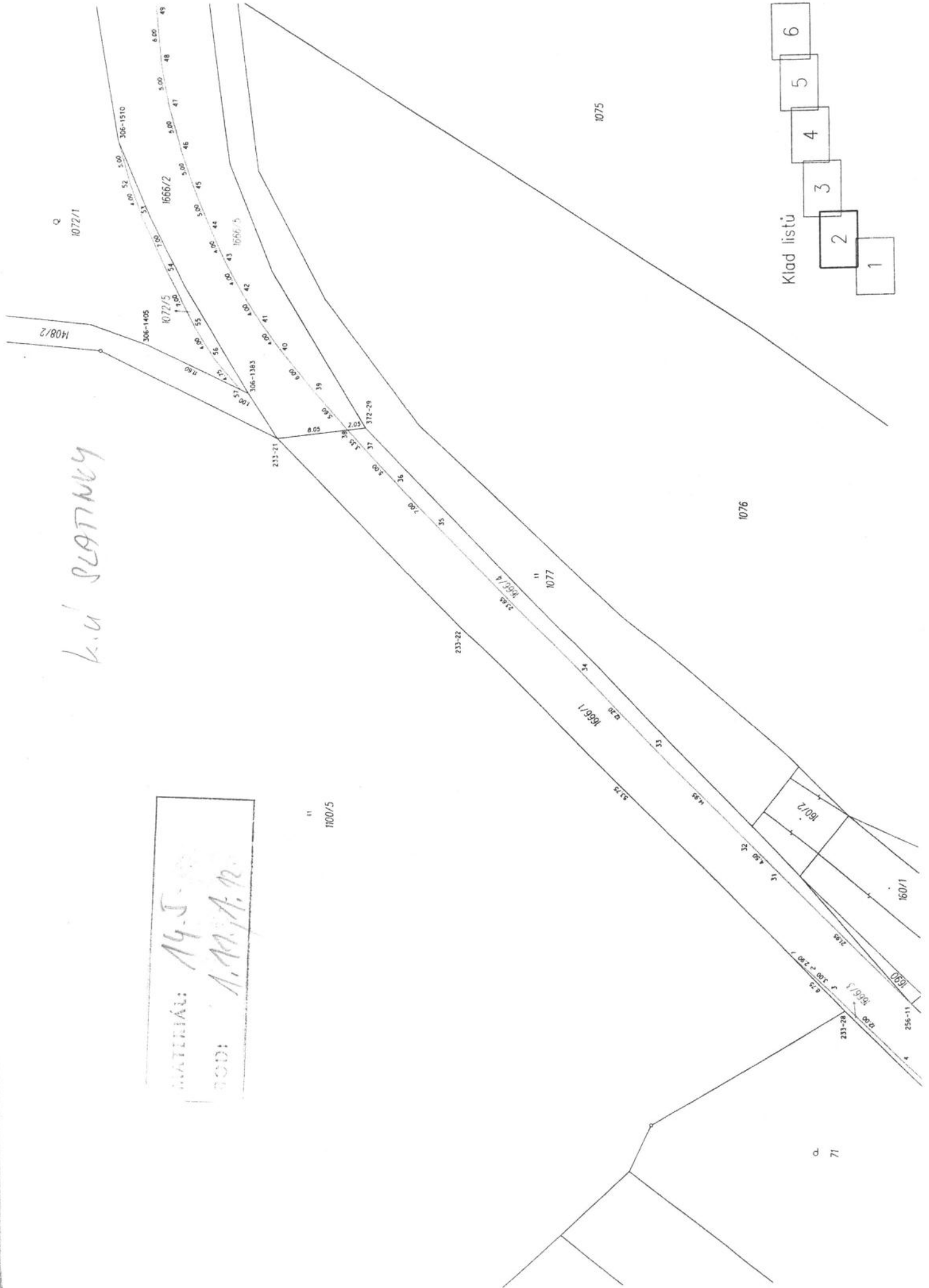
1440/11

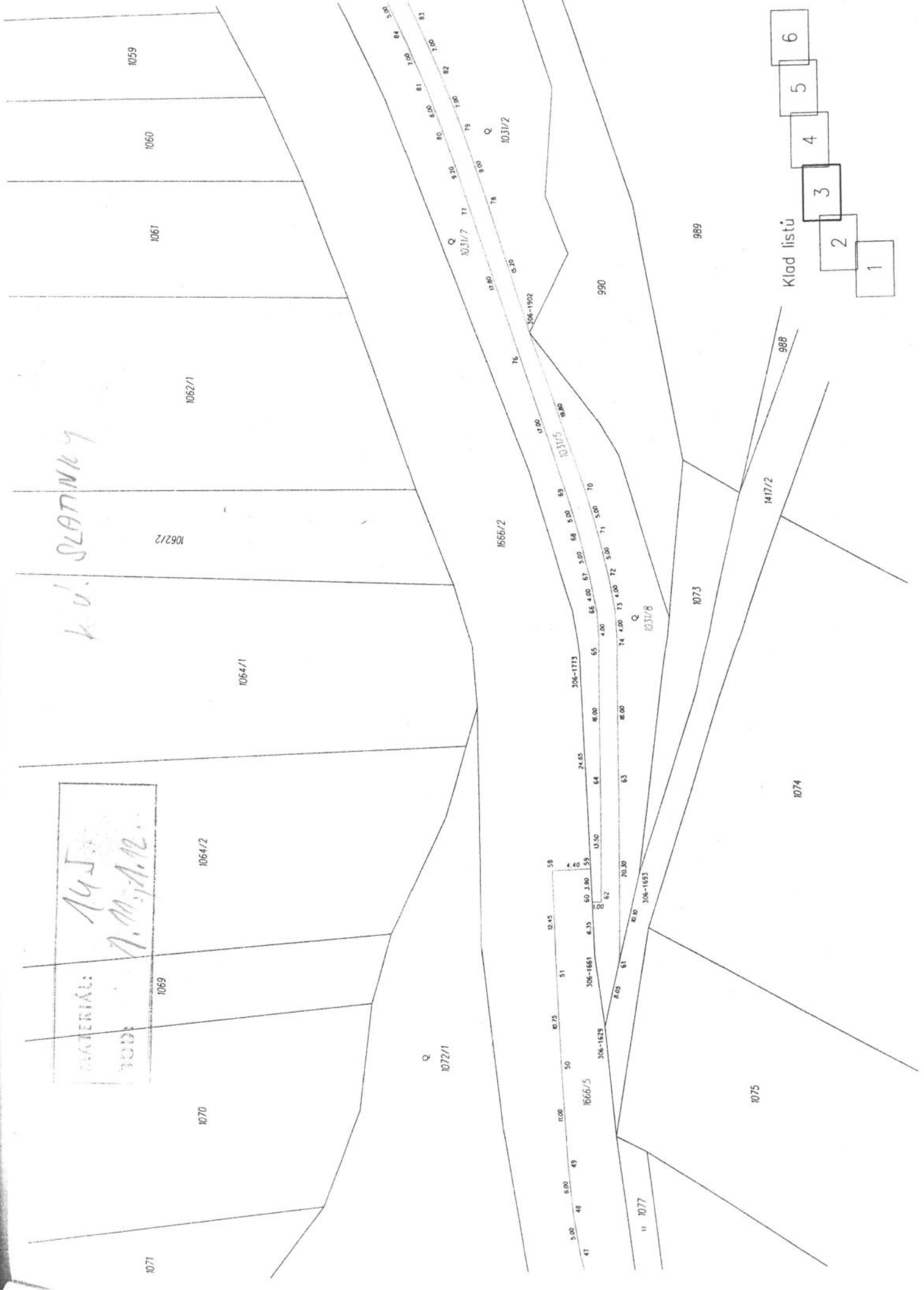


k.u. SLATNĚ

MATERIAL: 14.5.90
 GOD: A.M.P.A. n.

11
 1100/5





ADRESA: 19.5.
 1057
 OP: A.M.J.A.2.

K. U. PESTNICKY

1034

1412

1058/1

1058/2

1666/2

1065/1

1665/6

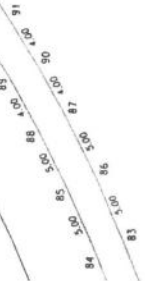
306-2204



997

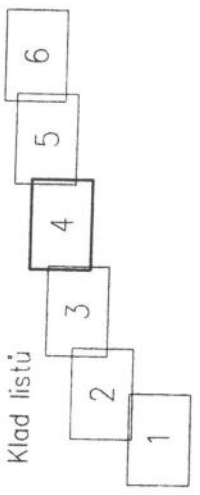
990

Q 1031/7



Klad listů

989



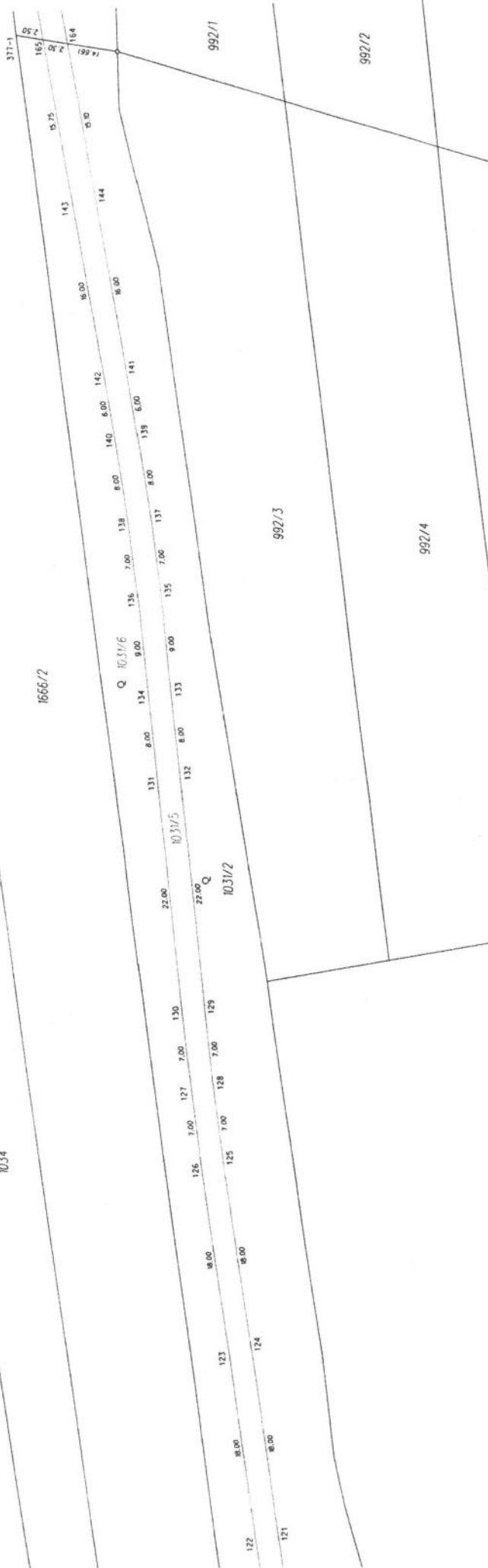
MASTRIAC: M.J.

ROD: A.M.J. 1.12.

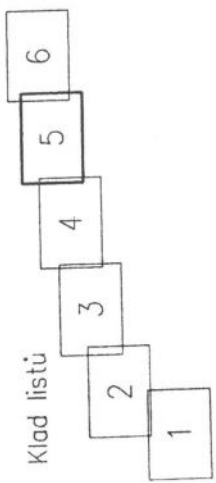
K.U. SLATINKY

1033

1034

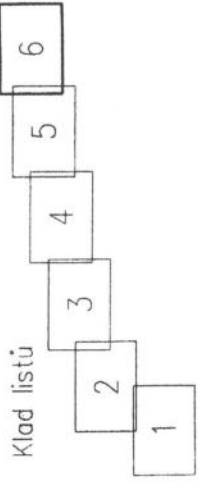


Klad listů



MATERIÁL: 19J.
 BOD: 199, A. A2.

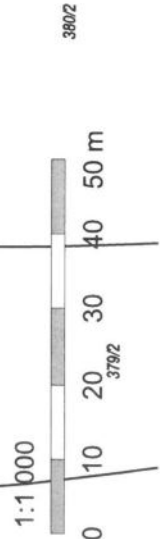
k. u. SZLOTTNICKY

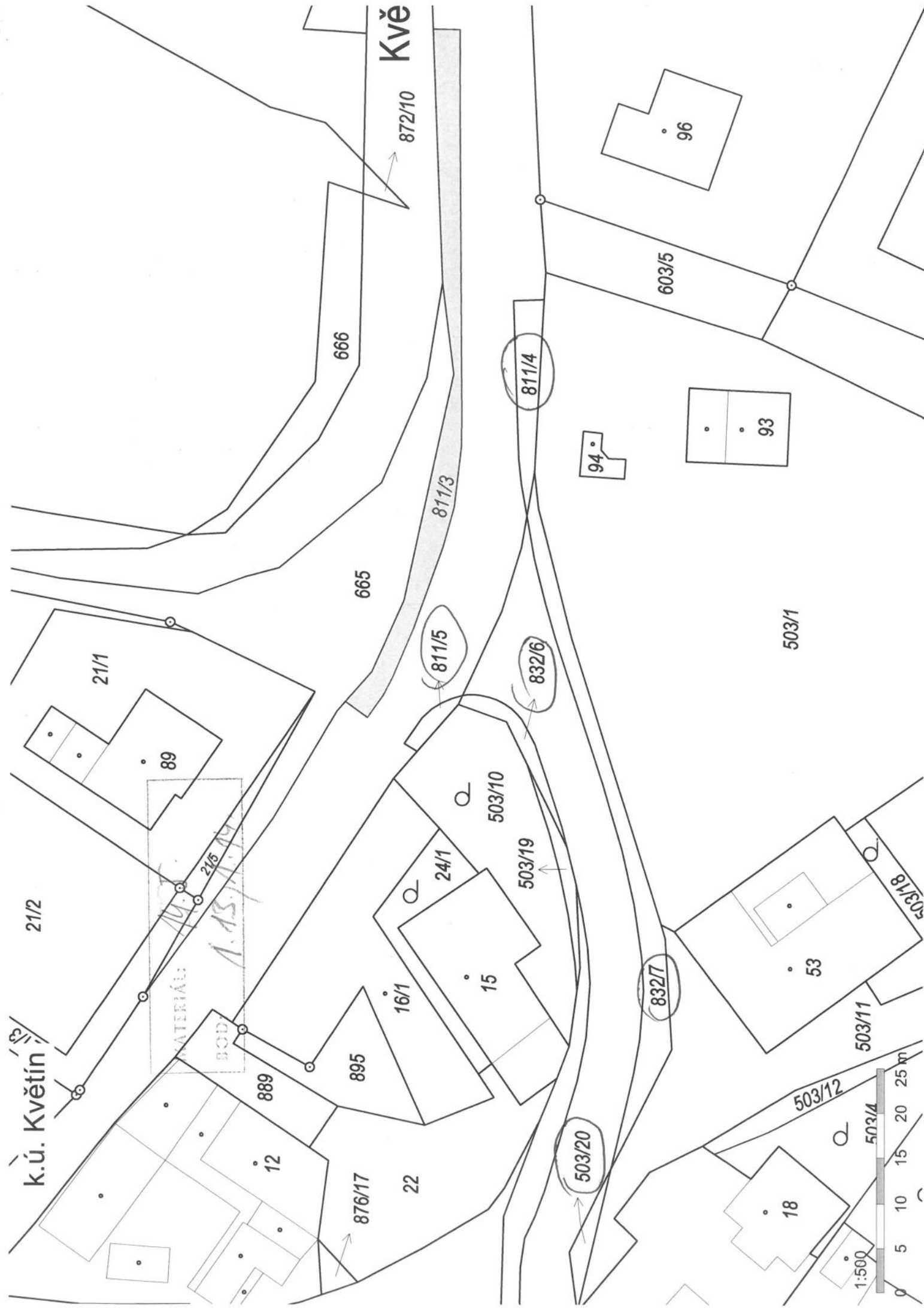


k.ú. Květín



MATERIÁL: M. J. -
BOD: M. B. A. A. A.





k.ú. Květín

Kvěť

MATERIÁL:
BOD:

A. 13. 11. 1999

