

Olomouc region

SUMMER
2013

& Jeseníky Central Moravia



www.ok-tourism.cz
www.visitjeseniky.com
www.centralmoravia-tourism.cz

European Union
European Regional Development Fund
Partner for your development



Central Moravia

The Olomouc Region



An offer of relaxation, sports and entertainment, but also of learning and enjoyment!

The Olomouc Region is among the regions which offer a diversity and variety that is able to satisfy even the most demanding tourists.

- It is a real treasure for all lovers of historical, natural and cultural monuments, and a place where you can do sports and relax.
- In the Olomouc Region there are seven spas which provide a wide range of health and wellness treatments that offer relaxation and help you maintain your health.
- Adrenaline enthusiasts will surely appreciate the Rychleby Trails, with 65 km of specially built trails for mountain bikes, the downhill trails in the Bike Park located in the Kouty Resort, or the Acrobat Park in Štítý, established by the Olympic champion Aleš Valenta, where you can try ski-jumping or snowboarding into the water.
- There are five publicly accessible caves, where you can admire the beauty of the underground world.
- Among the regional specialties are the so-called Olomoucké tvarůžky (a ripened soft cheese with a distinctive, pungent taste) and delicious beers made in the Litovel, Holba and Zubr breweries, or one of the small breweries. Specialists will also appreciate Prostějovská Starorežná, a typical herbal distillate.
- When it comes to historical gems, there are more than 10 fairy-tale castles and chateaux, including the Baroque Holy Trinity Column in Olomouc, which has been inscribed in the UNESCO List of the World Cultural and Natural Heritage.
- In the region there is the largest peat bog in Moravia (Rejvíz), the oldest nature reservation in Moravia (Šerák-Keprník), and one of the Seven Wonders of the Czech Republic – the Dlouhé Stráně Hydro Power Plant.
- If you seek both learning and entertainment, you can choose to visit one of the many museums, for example the Regional Museum in Olomouc, the Olomouc Archdiocesan Museum, the Comenius Museum, the Exhibition of Witch Trials, the Exhibition of Time, the Museum of Carriages or the Veteran Arena, where you will find historic cars and motorcycles, the Museum of Paper, the museum of the spa founders V. Priessnitz and J. Schroth, the Museum of the Prison Service, or the Museum of the Baroque Era.
- Cyclists will enjoy the flat Central Moravian cycling tracks; in Olomouc, you can try a family four-wheeler, and the Jeseníky Mountains offer several days that can be spent on the Witch Cycling Route.
- With your children, you can visit the zoo, ride a boat on the River Morava, ride roller-coasters in the Jeseníky Mountains or visit gold diggers in the Valley of Lost Mines in the Gold Mountains.
- Hundreds of different sorts of events take place in the Olomouc Region, from spectacular events attracting tens of thousands of visitors from the Czech Republic as well as from abroad, to minor ones intended only for a few enthusiasts.

Welcome!!

Please be kind to the environment, and let others admire its beauty, wealth and uniqueness, too.



Archdiocesan Museum

Good things to know

Important days in the Czech Republic

April 14–15 International Day for Monuments and Sites – On this day, admission to most monuments and sights is FREE OF CHARGE. May 18 International Museum Day – On this day, admission to most museums and galleries is FREE OF CHARGE. September 7–15, 2013 Days of European Heritage 2012 – On these days, admission to selected cultural monuments is FREE OF CHARGE. Also, some of the attractions that are not accessible on a regular basis are open then. For details and updates go to www.ehd.cz or contact the information centres of the relevant cities.

Public holidays and other holidays in the Czech Republic

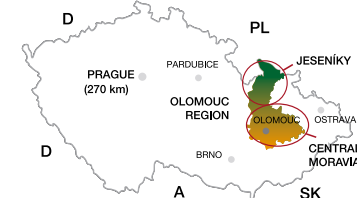
During these holidays, offices, banks, and most stores are closed. Sights and monuments, similarly to supermarkets and large shopping centres, usually remain open. However, on Mondays, the majority of sights and monuments are closed.

January 1, New Year
April 4, Easter Monday
May 1, Labour Day
May 8, Liberation Day
July 5, Saints Cyril and Methodius Day
July 6, Jan Hus Day
September 28, St. Wenceslas Day
October 28, Czechoslovak Independence State Day

Important telephone numbers

Czech country code +420
Emergency calls (112)
Police of the Czech Republic (158)
Paramedic services, emergency (155)
Fire fighters (150)
ABA roadside assistance (1240)

Where are the Jeseníky and Central Moravia





Tips for you:

Avoid traffic complications. While visiting the Czech Republic remember, the beginning and the end of the summer holidays (around July 1 and August 31) may worsen the traffic situation!

Contents

Central Moravia	6
Jeseníky	32

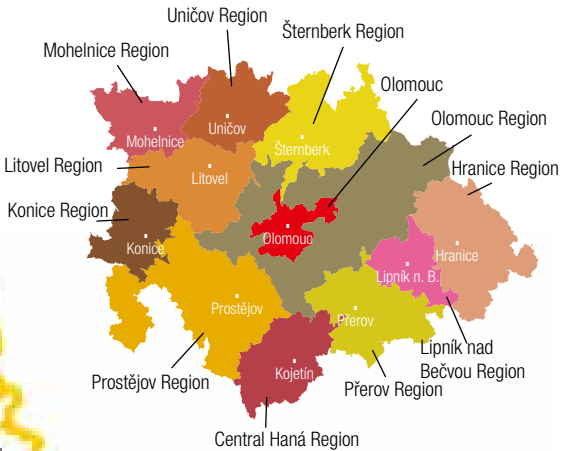
 Places where you can use the card – discount indicated, free = free of charge
 Access for disabled

Central Moravia – With hearts and gates open wide

Central Moravia attracts visitors with its historical gems and perfect conditions for doing all kinds of sports. Olomouc is the pearl of the region – a city which is famous not only for its UNESCO monument, but also for its ancient university, the Archdiocesan Museum, the Archbishop's Palace or the Baroque fountains. A number of fairy-tale castles and chateaux, including picturesque spots in natural surroundings, adorn the region. A unique time is guaranteed at a rope climbing centre, on horseback or in one of the water parks. Lovers of an active lifestyle will find a broad range of services, plentiful cycling tracks and the opportunity to play golf or tennis. The guide covers the 12 tourist sites into which Central Moravia is divided.

Content

Olomouc	6 – 13
Olomouc Region	14 – 15
Přerov and Lipník Regions	16 – 17
Hranice Region	18 – 19
Prostějov Region	20 – 21
Konicko Region	22
Central Haná Region	23
Šternberk and Uničov Regions	24 – 25
Litovel Region	26 – 27
Mohelnice Region	28 – 29



Caesar Fountain



Central Moravia – Tourist Association
Horní náměstí 5, 772 00 Olomouc
Tel: +420 585 204 627–629
E-mail: info@central-moravia.cz
www.centralmoravia-tourism.cz



Olomouc, Horní náměstí (Upper Square –Town Hall)
+420 585 513 385
+420 585 513 392
<http://tourism.olomouc.eu>



Czech Rail Information
Centre Olomouc
Main station
Jeremenkova 23
+420 972 741 620
www.cd.cz



Tourist centrum s.r.o., Olomouc
Švédská 10
+420 585 231 460
www.tourist-centrum.cz



With more than 100,000 residents, the city of Olomouc has dominated Moravia for a thousand years. This capital of Haná, as it is sometimes called because of its location, is the administrative centre of the Olomouc Region. Thanks to its large number of sights and architectural treasures, Olomouc is proud to rank second only to Prague as the largest and most significant urban monument reserve in the Czech Republic.

The city of Olomouc has a rich history and is one of the most beautiful urban centres in Central Europe. No wonder, since there was a bishopric here as early as in 1063, and in 1573 it became the city where the second oldest university in the Czech lands was established. In 1777 Olomouc became the seat of an Archbishop and was promoted to become the capital of Moravia in 1782. A number of distinguished personalities have left their mark on Olomouc, creating an atmosphere that cannot be described even in the finest words, an atmosphere that has survived until the present day. In the squares, in churches, in parks. It is unique for its architectural masterpieces. The monumentality of its chapels and churches is joined by the splendour of its palaces and the beauty of its Baroque fountains and columns. One of them, the Holy Trinity Column, is inscribed in the UNESCO World Cultural and Natural Heritage list. But it isn't just sightseeing. Olomouc is a city of students, parks, and the Flora horticultural exhibitions, a city of important museums, offering various cultural events, entertainment and sports activities. In 2009, one of the most modern water parks was opened. Olomouc will charm you, just give it a chance!



Tour route

We offer 3 different tour routes around Olomouc. The routes are plotted on the map.

1) The Upper Square

Holy Trinity Column – UNESCO monument (2) **TIP**

For more than 250 years the city centre has been adorned with this thirty-two-metre-high Baroque column. In 2000 it was inscribed in the UNESCO World Heritage List not only for its extraordinary dimensions but also for the refinement of the extensive sculptural ornamentation. Olomouc artist Václav Rindler began work on this unique piece of art and was later joined by a number of other local artists who continued the works until 1754, when the column was finally completed. Its ceremonial consecration was attended personally by the Austrian Empress Maria Theresa. Inside the column contains a small chapel, which is open to the public in the tourist season.

www.unesco-czech.cz

Town Hall with an Astronomical Clock (1) free

Originally Gothic, later remodelled in the Renaissance style – the town hall with a rare astronomical clock (daily musical display at 12 pm), a tower accessible to the public, and a Gothic chapel.

Caesar Fountain – a national cultural monument

The equestrian statue of the Roman Emperor Gaius Julius Caesar is the largest and best-known fountain in Olomouc.

The Church of St. Maurice and the Church Tower

The tower is 46 m high. If you climb it, you will be rewarded with unforgettable views of Olomouc, Svatý Kopeček, and in fair weather conditions also of the Jeseníky peaks. The tour is unguided; only in fair weather conditions; tickets available at the tower. It is open from May to September.

Opletalova 10, Tel./Fax: +420 585 223 179, www.moric-olomouc.cz / Opening hours: May–September Mon–Thu 9am–6.00pm, Fri 12pm–6.00pm

Tower open to the public: Mon–Sat 9am–5pm, Sun 12pm–5pm, for information about the tower opening hours call: +420 724 773 718, tower closed under adverse weather conditions

Mercury Fountain – a national cultural monument

This fountain, which dates back to 1727, is considered to be of the highest artistic quality of all the Baroque fountains in Olomouc.

Edelmann Palace

A Renaissance town house in the Upper Square.

Hercules Fountain – a national cultural monument (2)

Arion Fountain – a national cultural monument

This modern fountain was built in 2002 and it is one of the Olomouc Baroque fountains inspired by ancient mythology.

2) The Lower Square

Neptune Fountain – a national cultural monument

The oldest fountain in Olomouc (from 1683).

Marian Column

Built after a plague epidemic that hit Olomouc from 1713 to 1715, the column dominates the Upper Square.

Jupiter Fountain – a national cultural monument

It was the last Baroque fountain to be built in Olomouc and has decorated the Lower Square since 1735.



3) Towards Wenceslas Square

Church of St. Michael

Žerotínovo nám. 1, Tel.: +420 585 223 915, +420 603 282 975, www.svatymichal.cz / Opening hours: May–September daily 9am–5pm

Chapel of St. John Sarkander

The basement of a Neo-Baroque building erected on the site of a former city jail conceals a rack on which John Sarkander was tortured.

Na Hradě, Tel.: +420 585 223915, www.svatymichal.cz / Opening hours: Winter Tue–Sun 10am–12pm, 1pm–3pm, Sommer Tue–Sun 9am–1pm, 2pm–6.00pm

Primavesi Villa

A famous Art Nouveau villa with a restaurant and an art gallery.

Univerzitní 7, Olomouc, www.vilaprimavesi.cz, Tel.: +420 585 234 816 / 49°35'40.970"N, 17°15'19.534"E

Jesuit Convent with the Corpus Christi Chapel

University cinema, theatre, the Corpus Christi Chapel, exhibitions, performances and concerts.

Univerzitní 3, tel.: +420 585 633 099, www.upol.cz/umelecke-centrum

Church of the Virgin Mary of the Snow

Denisova, tel.: +420 585 549 256 / Prohlídky: May–September daily 9am–6.00pm

Triton's Fountain – a national cultural monument

Archbishop's Palace **TIP**

Residence of the bishops and archbishops of Olomouc. Tourists can take a tour that includes the historical representative rooms of the Archbishop's Palace. The palace is open to the public.

Wurmova 9, Tel.: +420 587 405 421, +420 587 405 411, www.arcibiskupskypalac.ado.cz / Opening hours: October, April Sat–Sun 10am–5pm / May–September Tue–Sun 10am–5pm (Last entry: 4pm) / 49°35'44.923"N, 17°15'39.394"E

Olomouc Castle with the Cathedral of St. Wenceslas and the Romanesque Bishop's Palace – national cultural monuments (2)

The former Premyslid castle has been a national cultural monument since 1962. The unique Romanesque gemel windows of the Bishop's Palace adorn the remains of the palace connected to the beginnings of the Olomouc diocese in the 11th century (today they belong to the Archdiocesan Museum). The Castle includes the Cathedral of St. Wenceslas, which houses a permanent display and themed exhibitions on the upper floor of the crypt. The lower floor of the crypt contains a mausoleum with the remains of bishops and archbishops.

Václavské nám., Tel.: +420 585 224 236, +420 585 514 190, www.oldom.cz, www.olmuart.cz / Opening hours: May–September daily 9am–6.00pm, Bishop's Palace: May–October Tue–Sun 10am–6.00pm

Other sights

The Hradisko Monastery, National cultural heritage

Areas accessible on the monastery tour: library, Ceremonial Hall, Theresian Room, St. Stephen's Church, Angel Staircase, the tower.

Sušilovo nám. 5, Tel.: +420 973 407 208, +420 602 965 662, www.vnol.cz / Opening hours: April–September Thu 2pm and 4pm and the first Saturday of the month at 8am–11am

Theresian Gate

A Baroque gate from 1752–1753, received its name a year later in honour of Maria Theresa upon her visit to Olomouc

Theresian Armoury

An armoury from 1769–1771; today it is the university library and an art venue.

Biskupské nám. 1, tel.: +420 585 631 730 / The Library is open: Mon–Thu 8am–22.00, Fri 8am–19.00, Sun 9am–4pm, the courtyard is freely accessible during the day

Route along parts of the royal fortress

Historical and educational trail that will guides you through the royal fortresses in Olomouc. Individual stations provide information boards and QR codes for mobile phones.

Royal Fortress of Olomouc

In the past, Olomouc was a city within a fortress. The fortifications were built for hundreds of years and the construction works culminated in the 19th century with the building of a unique ring of outlying forts. Three of the preserved structures are open to the public and this particular historical period is also documented in a number of other structures situated all around Olomouc.

Fort XIII

Nová ulice, Tel.: +420 603 217 611, www.forty.cz / Tours can be arranged by phone. / 49°34'29.811"N, 17°12'59.109"E

The Olomouc Fortress

The structure dates back to the 2nd half of the 18th century; you can see a Baroque powder store, the remains of an Empire guardhouse, and the buildings housing the artillery laboratories. The precincts are managed by the Olomouc Fortress Museum Association.

Bezručovy sady, Michalská 8, Tel.: +420 603 553 933, www.pevnostolomouc.cz

Bastion Fort Model

The model is an example of the Olomouc defence system (a bastion fort is a fort based on bastions, which are modern modifications of citadels).

Dům armády, tř. 1. máje 3, Tel.: +420 973 406 471 / Opening hours: Mon–Thu 8am–15.45, Fri 8am–14.30

Castle fortification line in Bezruč Garden

The remnants of the town fortification form a ring around the gardens.

Water Barracks

Former casemates, today a popular meeting place – bars, bistros, etc.

Mlýnská 2, Tel.: +420 608 206 075, <http://tourism.olomouc.eu>

Černovír – Fort XXII Olomouc

Railway fort built between 1861 and 1866.

Fort Radíkov – Poterna -25%

Radíkov, Tel.: +420 777 135 001, www.pevnost-radikov.cz / Opening hours: June–October Sat, Sun 11am–5pm / 49°38'20.899"N, 17°21'55.013"E

Fort Křelov Olomouc

Na Fortu 392/1, Křelov u Olomouce, Tel.: +420 605 937 842, 603 444 010, www.forty.cz / Opening hours: June, September Sat, Sun 10am–4pm, July, August Tue–Sun 11am–5pm / 49°36'52.988"N, 17°11'58.308"E

Olomouc – museums, nature, learning

Museum of Art

This institution is the third largest of its kind in the Czech Republic. In Olomouc it manages two branches. Denisova 47, www.olmuart.cz, Tel.: +420 585 514 111 / Opening hours: Tue–Sun 10am–6.00pm. Free entrance every Wednesday and Sunday.

Archdiocesan Museum (1) free, sale **TIP**

A museum of European importance and the only institution of its kind in the Czech Republic which focuses on art from the 12th to the 18th centuries. It is located in the Přemyslid Castle, a reconstructed part of the national cultural heritage. The site documents the thousand-year building development and is one of the oldest continuously inhabited locations in Central Europe (archaeological finds from the area date to 4200 BC). King Václav III, the last Bohemian ruler from the Přemyslid family, was murdered here in 1306. Permanent exhibits in 16 halls showcase over 300 works from the Romanesque up to the Baroque period, including the famous Šternberk Madonna and Bishop Troyer's coach. The premises include a café and a wine bar. Audio guides in Polish are available.

Václavské náměstí 3, www.olmuart.cz, Tel.: +420 585 514 190

Museum of Modern Art free, sale **TIP**

Specialising in 20th- and 21st-century art. Displays permanent and temporary exhibitions of Czech and foreign modern art. There is also a hall for cultural events and the Café 87.

Denisova 47, www.olmuart.cz, Tel.: +420 585 514 111

Museum of History and Geography free, sale

The museum began the 2012 season with two innovations in the form of permanent modern displays. The first display captures the natural world of the Olomouc Region, while the second one is focused on the history of Olomouc from the 6th century to the present day. Both exhibitions are equipped with interactive features, which will surely be appreciated by children and adults alike. The complete collection currently contains almost a million items, and there are about twenty temporary exhibitions during the year, in addition to the permanent displays.

nám. Republiky 5, E-mail vmo@vmo.cz, www.vmo.cz, Tel.: +420 585 515 111 / Opening hours: April–September Tue–Sun 9am–6.00pm, October–March Wed–Sun 10am–5pm / 49°35'47.526"N, 17°15'23.285"E

Veteran Arena free **TIP**

The Veteran Arena Olomouc is the largest vintage car museum in the Czech Republic accessible to the public. In an area of over 2000 m², visitors can see more than a hundred cars and another three hundred unique exhibits. The heart of the collection is an entire fleet of TATRA vehicles. Since 2011, this unique collection has been expanded with cars of the Wikov marque. The most interesting exhibits include, for example, the only surviving Tatra 75 Sport vehicle and an original Tatra 49 tricycle. Regular temporary exhibitions help make the collection more lively.

Sladovní 3, www.veteranarena.cz, Tel.: +420 585 157 438 / Opening hours: April–September Tue–Sun 10am–5pm, October–November a February–March Wed–Sun 10am–5pm / 49°36'14.429"N, 17°16'36.778"E

Olomouc Aviation Museum (3) free

The newly-opened museum in Olomouc–Neředín exhibits a number of propeller-driven and jet aircraft used by the Czechoslovak air force.

Letiště Olomouc–Neředín, hala č. 88, Tel.: +420 604 772 478, +420 777 044 939, www.letecke-muzeum.cz / Opening hours: April–September Sat–Sun 10am–5pm / 49°35'31.972"N, 17°12'24.464"E

Exhibition in the City Hall

The Olomouc city hall attracts visitors with three exhibitions, the first one dedicated to the history of the astronomical clock and the other mapping the changes the city hall has undergone from its foundation until the present and the third, called "Olomouc Through the Ages", covers the city's history.





Church of the Visitation of the Virgin Mary, Sv. Kopeček (1) **TIP**

One of the most popular outing and pilgrimage destinations of the region. The dominant feature is the Church of the Visitation of the Virgin Mary from the 17th century. On his visit to the city Pope John Paul II elevated the church to the status of basilica minor.

Sadové náměstí 1, www.svaty-kopecek.cz, Tel.: +420 585 385 342, +420 777 742 176 / Opening hours: daily except Monday afternoon. / 49°37'44.955"N, 17°20'16.378"E

Svatý Kopeček and the zoo (2) free, Sale

The Zoological Garden at Svatý Kopeček covers over 40 hectares. In a pleasant environment, there are more than 400 species of animals, including several true rarities. These include a common enclosure for American black bears and arctic wolves, a bat pavilion, a giant aquarium, an exotic tropical pavilion, or open walks through the Japanese Macaque Pavilion, with a hanging bridge. Animal feeding time, with commentary by the animal handler, is very popular with visitors. Children will enjoy the new rope course and the fun playground by the zoo exit.

Darwinova 29, Tel.: +420 585 151 601, www.zoo-olomouc.com / Opening hours: April–August 9am–6.00pm, March, September 9am–5pm, October–February 9am–4pm / 49°38'0.224"N, 17°20'35.457"E



Flora Olomouc (3)

The extensive Olomouc gardens not only offer an escape in greenery and a pleasant rest but also contain points of interest you should not miss. Let yourself be enchanted by the botanical garden and the rose garden neighbouring the Bezruč Park. In the Smetana Park you can visit the unique subtropical and tropical conservatories, which are a national heritage monument. What you should definitely not miss are the traditional horticultural exhibition and gardening markets that draw tens of thousands of visitors every year.

Walkerova 37/17, Tel.: +420 585 726 111, www.flora-ol.cz / 49°35'18.406"N, 17°14'43.454"E

Collection Conservatories **TIP**

Palm, cactus, tropical, sub-tropical These are some of the largest conservatories in the Czech Republic. Exotic plants are supplemented with foreign fish and amphibians. With a playground in the vicinity it is very suitable for children.

Tel.: +420 585 726 215, www.flora-ol.cz / Opening hours: March Tue–Sun 9.30am–4pm, April–October Tue–Sun 9.30am–6.00pm

Botanical garden including a rose garden free

It spreads out on the area of the Crown bastion and you can feast your eyes on the rose garden, rock garden, nations' gardens, and temporary exhibits of spring and summer plants.

Tel.: +420 585 225 566, www.flora-ol.cz / Opening hours: April–October Tue–Sun 9.30am–6.00pm

Olomouc Sensory Garden

The sensory garden is largely designated for blind and visually challenged visitors. Here, on an elevated flowerbed, they can smell, feel or hear about 80 plant species, the names of which are written in Braille on plates.

Tel.: +420 585 726 111, www.flora-ol.cz / As it is accessible by wheelchair the flowerbed is also great for wheelchair users and mothers with children. Opening hours: April–October Tue–Sun 9.30am–6.00pm



The Litovel Morava River Basin

The Litovel Morava River Basin, a landscape park, is a popular tourist destination for hikers and cyclists. It lies along the River Morava between Olomouc and Mohelnice and has an area of 96 km². The core of the landscape park is formed of an inland river delta and the complexes of the valuable lowland forests, damp meadows and wetlands. In addition to the protected species of birds, such as the kingfisher, the half-collared flycatcher or the middle-spotted woodpecker, you may spot the European beaver, the river otter, the crested newt or the fire-bellied toad.

Cultural life

The magic of the moment, joy, discoveries, new experiences, and fun – all this you can find on the Olomouc cultural scene with its permanent expositions and temporary exhibits. Theatres, cinemas, galleries, and excellent cultural events you cannot miss. Olomouc is the City of Culture. <http://tourism.olomouc.eu>

Moravian Theatre in Olomouc free

Horní náměstí 22, www.moravskedivadlo.cz, Tel.: +420 585 500 111 / Tickets and reservations: Mon–Fri 9am–6.00pm, internet booking possible. / 49°35'34.386"N, 17°14'59.687"E

Moravian Philharmonic

Horní náměstí 23, www.mfo.cz, Tel.: +420 585 206 520, E-mail mfo@mfo.cz / Concerts usually start at 7pm / 49°35'36.060"N, 17°15'1.419"E

Theatre of Music

Divadlo hudby, Denisova 47, Olomouc, www.divadlohudby.cz, Tel.: +420 585 223 565 / 49°35'46.835"N, 17°15'25.193"E

UP Konvikt Art Centre

Univerzitní 3, Tel.: +420 585 633 099, +420 733 690 786, www.upol.cz/umelecke-centrum / 49°35'41.121"N, 17°15'19.055"E

Tramtárie Theatre

Slovanský dům, Hynalsova 11, Olomouc, Tel.: +420 777 703 946, www.divadlotramtarie.cz / 49°35'50.456"N, 17°14'46.600"E



Sport

Aquapark Olomouc (4) -20 %

A new modern water park full of water attractions, including a relaxation area, was opened in 2009. Year-round indoor operation, seasonal outdoor operation. TOP: SpaceBowl (the only one in Moravia), riding on special inner tubes through a water slide, length 123 m, daylight effect and Streepefekt.

Aquapark, Kafkova 526/21, Tel.: +420 588 517 770, www.aqua-olomouc.cz / Opening hours: the outdoor area May–September Mon–Sun 9am–21.00, the indoor area Mon 2pm–20.00, Tue–Fri 10am–20.00, Sat, Sun, public holidays 9am–20.00 / 49°34'29.765"N, 17°13'14.172"E

Swimming Stadium -20 %

Indoor and outdoor swimming pool, diving towers (3–10 m), water slide, children's pool with a slide, whirlpool, steam sauna.

Legionářská 11, www.oter.cz, Tel.: +420 585 427 181, +420 585 427 208 / Opening hours: January–June, September–December Mon–Fri 6.00–21.00, Sat–Sun 9am–21.00, July–August Mon–Sun 9am–20.00 / 49°35'55.98"N, 17°14'39.29"E

Horka nad Moravou – Poděbrady natural swimming area (5)

Natural lakes popular with tourists, located 6 km from Olomouc in the direction of Horka nad Moravou. A nudist beach, restaurant. 49°37'43.019"N, 17°13'41.179"E

Galerie

Caesar Gallery

Horní náměstí – radnice, Olomouc, www.galeriecaesar.cz, Tel.: +420 585 225 587 / 49°35'37.208"N, 17°15'3.921"E

Mona Lisa Gallery

Horní náměstí 20, Olomouc, www.mona-lisa.cz, Tel.: +420 585 226 828 / 49°35'35.211"N, 17°15'3.852"E

Patro Gallery

Opletalova 1, Olomouc, Tel.: +420 585 204 458 / 49°35'41.449"N, 17°15'4.795"E

Primavesi Gallery

Univerzitní 7, Olomouc, www.vilaprimavesi.cz, Tel.: +420 585 234 816 / 49°35'40.970"N, 17°15'19.534"E

Rubikon Gallery

Tř. 1 máje 24, Olomouc, www.galerierubikon.cz, Tel.: +420 602 745 174 / 49°35'48.552"N, 17°15'36.582"E

U Mloka Gallery

Lafayettova 9, Olomouc, www.p-centrum.cz, Tel.: +420 585 221 983 / 49°35'29.011"N, 17°15'7.603"E

Labyrint Gallery

Palackého 9, Olomouc, Tel.: +420 732 575 815, +420 606 552 977 / 49°35'44.944"N, 17°14'44.895"E

Anděl Gallery

8. května 8, Olomouc, www.galerie-andel.cz, Tel.: +420 606 552 977 / 49°35'43.137"N, 17°14'57.863"E





OMEGA Sports and Health Centre (1) ♿ -10-20 %
Squash, badminton, sauna, tennis, fitness, adventure golf.
Legionářská 19, www.omegasport.cz,
Tel.: +420 585 205 700 /
49°36'2.783"N, 17°14'48.459"E

Best Sports Centre ♿
Sports and Cultural Centre. gym, massage centre, squash, bowling, table football, billiards, darts, large-screen projection TV.
Dolní Hejčínská 36, www.best-sportcentrum.cz, Tel.: +420 585 234 312-3 / 49°36'5"N, 17°14'41"E

Lamborghini Kart Arena
Hanáckého pluku – aboveground garages - 11th floor, Tel.: +420 604 559 552,
www.motokary-olomouc.cz

Proud Rope Climbing Centre ♿ -20 %
Na Střelnici 48, Olomouc, Tel.: +420 605 215 348, www.lanovecentrum.cz / Opening hours: July–August daily 2pm–7am / 49°36'17.390"N, 17°14'59.197"



SOLANA Salt Cave ♿ -10 %
8. května 11, Olomouc, www.solana.cz,
Tel.: +420 585 204 290 /
49°35'44.13"N, 17°14'56.217"E

Jánského Salt Cave ♿
Janského 24, Olomouc,
www.solnajeskynejanseho.cz,
Tel.: +420 733 517 800 /
49°34'43.144"N, 17°14'34.947"E

Olomouc Spa ♿ / ♿ -10–20 %
Water exercises: water aerobics and water fitness, weekend stays, convalescent stays. Spa facilities: pool, floating – salt bath, sauna, a lymphastim instrument, oxy- and carbo-therapy, peat, baths, wraps, massages, wellness and spa procedures.
Krápkova 34, Tel.: +420 605 788 818, www.lazneolomouc.cz / 49°35'28.044"N, 17°14'36.476"E

Beer Spa ♿ -10 %
The spa was founded in the Svatováclavský (St. Wenceslas) microbrewery in the autumn of 2010. You can thus combine the pleasure of a relaxation procedure with tasting the Svatováclavský beer.
Mariánská 4, Tel.: +420 585 242 219, <http://lazne.svatovaclavsky-pivovar.cz> / Opening hours: daily 2pm–22.00 / 49°35'45.118"N, 17°15'31.349"E

Paintball Game Olomouc
A unique environment for the game – the premises of the Theresian fortifications in Olomouc. Please phone for reservations.
Neředinská pevnost, Vikoš (Spielgelände),
Tel.: +420 776 713 600, www.pgo.cz /
49°35'41.595"N, 17°12'37.752"E

Bowland Olomouc (2) ♿ / ♿ -20 %
12 professional lanes AMF, bumpers for the youngest players.
tř. Svobody 31, www.bowland-olomouc.cz, Tel.: +420 587 420 203 / 49°35'35"N, 17°14'57"E

Minigolf – MGC Olomouc ♿ / ♿ free
tř. 17. listopadu 3 + area of summer cinema (ul. Hanáckého pluku), Tel.: +420 603 530 586,
www.minigolfolomouc.cz / 49°35'23.658"N, 17°15'33.991"E

On Horseback

C&H Farm, a. s.
www.kone-repoin.wbs.cz, Tel.: +420 732 530 084
Radíkov u Olomouce – Chata Pod Věží
Na pevnůstce 32, Radíkov u Olomouce,
Tel.: +420 585 385 040, www.radikov.com
Radíkov u Olomouce – Hipocentrum Fortel
Chata Pod Věží, Na Pevnůstce, Olomouc–Radíkov,
tel.: +420 739 413 283, www.ponikferda.wbs.cz
Areal Equine Sport Centre Olomouc
ul. Lazecská, Olomouc, +420 602 474 419,
www.escolomouc.cz / 49°36'25.380"N, 17°15'7.549"E

Tennis

TJ Milo Olomouc
Na Střelnici, Tel.: +420 736 136 118 (reservation of courts and indoor hall), Tel.: +420 777 225 185 (reservation of the inflated tennis hall), www.tenismilo.cz
Slovanský dům
Hynaisova 11, Tel.: +420 585 417 966,
www.slovan-dum.cz
Hotel Prachárna Olomouc
Křelovská 91, Tel.: +420 585 411 271,
+420 736 606 813, www.hotel-pracharna.cz

Conventional and unconventional Olomouc

Multimedia guide

Those interested in a tour of the city may wish to use a multimedia guide. Just visit the Information Centre in the City Hall arcade, where you can borrow one.



Olomouc from a raft

♿ free
Unusual view of Olomouc from raft trips on the Morava River. The route starts under the Cathedral of St. Wenceslas and continues under the city fortifications and through the Bezruč Gardens to the city centre. Length 1.5 km, duration approximately 25 minutes, regularly scheduled bus transportation from the Upper Square (in front of the Town Hall)
May, June, September Wed 10am–5pm, July, August Wed, Fri 10am–5pm
CK Peřej tours, třída Svobody 39,
Tel./Fax: +420 585 313 176, +420 603 113 344,
www.perej.cz ♿ -20 %, Sale

Trips down the Morava River.
www.raftingmorava.cz

On a four-wheeler around Olomouc

If you come to Olomouc with children and want an unusual experience, you can try the family four-wheelers. They are suitable for up to three adults and two children under six years old. You can go on a ride to one of the three Olomouc parks. The Smetana Park, the Čech Park and the Bezruč Park spread over more than 47 hectares and are among the historical and cultural gems of the city.
CK Peřej Tours, třída Svobody 39, Olomouc,
Tel./Fax: +420 585 313 176, +420 737 514 359, www.perej.cz / Wed a Fri 10am–5pm, The Upper Square in front of the Information Centre of Olomouc

Olomouc City Hall Tower

♿ free **TIP**
Visitors can climb the tower as part of guided tours organized by the Information Centre. During the main tourist season, these tours are organized 6 times a day under the "Olomouc in a Nutshell" programme, and outside the season, the tower is open twice a day, at 11am and 3pm. Tickets are available from the Information Centre in the City Hall arcade.

With earphones

♿ free
For individual visitors interested in a tour around the historical centre, there is an audio guide available. You won't be rushed, you can listen to the audio guide five times in a row if you want and you will understand much of what Olomouc has to offer. Texts available in five languages! Rentals at the information centre in the city hall arcade. 300 CZK deposit required.
<http://tourism.olomouc.eu>

Olomouc in a nutshell

♿ free
Olomouc in a Nutshell is an hour-long sightseeing tour around the most important monuments of the Upper Square, which is followed by a tour of the exhibitions located on the premises of the City Hall. The tour ends with an ascent of the City Hall tower. Tickets are available at the Information Centre in the City Hall arcade.

Olomouc and Children, with Ola the Cat

A guide with Ola the Cat will give kids aged 4 to 7 a fascinating tour of the capital of Haná. Visitors are provided information about the city's most important monuments. Length of the tour: 45 minutes. Ola the Cat has been sleeping behind the city hall chimney for several centuries and will reward the best-behaved kids with a small gift after the tour.
Horní náměstí, Olomouc, Tel.: +420 585 513 385, infocentrum@olomouc.eu



Guided Bicycle Ride around Olomouc

♿ -20 %
The guided bicycle ride around Olomouc has two variants (A is longer and B is shorter) and includes the most beautiful places in Olomouc. When cycling, you can get acquainted with the interesting places in Olomouc within just one day; at every stop, you will learn interesting information from our knowledgeable guides. You will see famous sights (churches, fountains, columns, city walls) and take breathtaking rides through all the parks of Olomouc. The longer variant includes a stop at a typical local pub (food and drinks not included in the price) where you can taste specialties and excellent beer. The routes run mostly on cycling trails and on quiet streets. The longer A route that takes visitors to a marsh and below one of the most important pilgrimage sites in the Czech Republic – Svätý Kopeček – lasts 4.5 hours and is 18 km long. The shorter B route lasts 2 hours and is 9 km long. The price includes the bicycle rental, a guide, a reflective vest, and a helmet for children up to the age of 15. However, you can also rent only the bicycle at the travel agency.
Information, booking: CK Peřej tours, 779 00 Olomouc, tř. Svobody 39,
Tel.: Fax: +420 585 313 176, +420 603 113 344 www.olomoucbiketour.cz, www.perej.cz



Olomouc Region



Bystrovany Arboretum



Horka nad Moravou
Skrbeňská 70
+420 585 154 711
info@slunakov.cz
www.slunakov.cz

Slatinice
Slatinice 29
+420 585 944 599
obchod@lazneslatinice.cz
www.tc-slatinice.cz

Velká Bystřice
Zámecké náměstí 775
+420 734 236 506
kic@muvb.cz
www.muvb.cz



1

The surroundings of Olomouc are ideal for walks in the countryside, visiting interesting sites, getting to know the folklore of Haná or for sports activities. There's something interesting for everyone, be it a visit to an arboretum or an exhibition of vintage vehicles or trains at the Garden Railway in Strážov. The joy of exercising can be experienced in the recently opened sports and recreation grounds in Bystrovany. Lovers of folklore will be delighted by traditional events that take place in the nearby villages and by the Haná Open-Air Museum in Příkazy.

Slatinice – Antique Car Museum (1) free

Although Slatinice is a town especially renowned for its spa, visitors are also attracted by a collection of ancient cars and motorcycles, dating predominantly from the 1930s. The collection is in a remodelled farm and covers an area of 400 square metres. The unique atmosphere is enhanced by the historical backdrop of Olomouc and many period artefacts.

Muzeum veteránů Slatinice, Slatinice 2, www.veteranmuseum.cz, Tel.: +420 585 429 077 / Opening hours: Mon–Sun 10am–5pm / 49°33'42.548"N, 17°5'52.638"E

Příkazy – Haná Open-Air Folk Museum (2)

  free

Exhibition dedicated to the life of the inhabitants of the Haná region, including an original Haná pub, a toy collection, and various tools and machines.

Příkazy 54, Tel.: +420 585 967 310, +420 776 576 598, www.hanackeskanzen.cz/ / Opening hours: May Sat–Sun, public holidays 11am–4pm, June–August Tue–Sun 11am–5pm, September Tue–Sun 10am–4pm / 49°38'41.78"N, 17°8'21.023"E



2

Bystrovany Arboretum

A remarkable arboretum with 200 species of exotic trees and plants spreads over an area of four hectares. It includes a small lake with a waterfall, a gardening store, a small petting zoo and a restaurant. Romantic night tours with lit lanterns every Wednesday during summer holidays.

Tel.: +420 736 772 089, www.prirodniraj.cz/ / Opening hours: 24. 3.–31. 10.: Mon–Sat 8am–20.00, July–August, every Wednesday open after dark / 49°35'59.57"N, 17°19'28.25"E

Hlubočky Fun Park -11%

Mountain mini-karts, quad bikes, a bike park, driving a HUMMER.

Školní 126, Hlubočky, Tel.: +420 775 771 077, www.funparkhlubocky.cz, www.skiarealhlubocky.cz/ / Geöffnet: May, June, September Fri 2pm–19.00, Sat–Sat 11am–19.00, July–August daily 10am–19.00, October Fri 2pm–6.00pm, Sat 11am–6.00pm, Sat 11am–5pm / 49°37'41.032"N, 17°24'17.541"E

Hrubá Voda Activity Park

Rope climbing centre, tennis, petanque, playground, animation programmes.

Hrubá Voda 59, Hlubočky, Tel.: +420 585 157 150, www.zfpark.cz / 49°40'8.822"N, 17°25'31.243"E

Dub nad Moravou – pilgrimage site (3)

Processions of pilgrims come to the local Baroque church of the Purification of the Virgin Mary, where, as the legend goes, a wooden picture of Our Lady – the Virgin Mary – shines brightly at night.

Brodecká 1, Tel.: +420 585 964 263, www.dubnadmoravou.cz / 49°28'56.954"N, 17°16'38.038"E

Slatinice Spa (5)

Indoor swimming pool, whirlpool, sun meadow, infrared sauna, herbal steam bath and jacuzzi.

Slatinice 29, Tel.: +420 585 944 599, www.lazneslatinice.cz/ / 49°33'44.223"N, 17°5'45.517"E

Health Centre – Bohuňovice Water Park

Swimming pool, heated children's pool, water slide, fitness center, whirlpool, steam room, sauna, water bar, massage.

6. května 616, Bohuňovice, Tel.: +420 585 151 731, www.bohunovice.cz/ / 49°39'40.749"N, 17°17'1.623"E

Golf Resort Olomouc (4)

 free

Players can enjoy an 18-hole par 72 championship course with numerous water hazards and sand bunkers, as well as a public 9-hole par 54 course, driving range, large putting green, chipping green, and a clubhouse with a terrace. The facility also offers accommodation and special golf packages.

Dolany–Věska 89, Tel.: +420 585 209 111, +420 605 512 822, www.golf-olomouc.cz/ / 49°39'33.523"N, 17°21'8.528"E



6



3



4



5

Events in 2013

Doloplazy

July 7, Ride of the Kings
folk celebration, www.doloplazy.cz/olesnica

Velká Bystřice

July 13, Folk Festival Hanácké pupek
www.velkabystrice.cz
September 7–8, Folk Year
XXII. Folk Festival Velká Bystřice,
Tel.: +420 585 351 680

Věrovany

July Hanácké květky – International Music Festival

Přerov and Lipník Regions



Přerov



1



2

The region will welcome you with a beautiful and colourful landscape. You can set out in the tracks of mammoths to an important archaeological discovery site or learn about the renowned teacher of nations – John Amos Comenius. The medieval castle at Helfštýn is truly enchanting not only thanks to its vastness but also because it holds a permanent exhibition of artistic blacksmith work.



Přerov, Náměstí T.G.Masaryka 7
+420 581 205 131  mic@medialine.cz, www.přerov.eu

Předmostí – Přerov, Pod Skalkou 1a
+420 581 217 404, www.přerov.eu

Lipník nad Bečvou,
Nám. T. G. Masaryka 13
+420 581 773 763  tic@mek-lipniknb.cz
<http://info.mesto-lipnik.cz>

Přerov (1)

The Přerov Renaissance Chateau, surrounded by a picturesque square, is the seat of the Comenius Museum – the oldest museum dedicated to pedagogy in the Czech Republic. The tour includes climbing the castle tower for a wonderful view. In the town centre, there is the charming Neo-Renaissance City House, with Art Nouveau elements. Various cultural events take place here – among the most important of them is a jazz festival. Children will be delighted by the half-metre-tall puppets in the Přerov puppet theatre. In addition to culture and history, Přerov also boasts sports centres, including one of the largest tennis court complexes in the Czech Republic, and numerous other opportunities to stretch your body. There is also an indoor pool, as well as an outdoor swimming pool with heated water. The Michalov town park is great for walks; the Bečva bike trail, which crosses it, is also suitable for in-line skating. In Přerov, there is also the ORNIS ornithology station, with the largest exhibition of birds in Central Europe. For lovers of nature and learning, thematic educational walks through the town and its surroundings are the perfect choice.

www.přerov.eu / 49°27'18.396"N, 17°27'3.248"E

Educational historical trail (2)

"Through Předmostí to Prehistory" The trail leads through the site where 25 thousand years ago the mammoth hunters camped. If you like history, follow the blue trail markings on an 8-kilometre-long hike with 9 stops. The trail starts at the Předmostí residential area, by a sculpture "Dig into Prehistory" (about 50m from the cemetery, close to the car park and the bus stop). The highest point of the trail is the Čekyřský Hill (305 metres above sea level), holding a life-size statue of a juvenile mammoth

Tel.: +420 581 217 187, +420 581 211 739, www.přerov.eu / 49°27'58.262"N, 17°26'19.567"E

Museum of Comenius (4)

Horní náměstí 7, Přerov, www.přerovmuzeum.cz, Tel.: +420 581 250 531 /
Opening hours: Tue–Fri 8am–5pm, Sat–Sat 9am–5pm / 49°27'18.324"N, 17°27'7.280"E

Lipník nad Bečvou (3)

As the other one of the two town heritage zones in the Olomouc Region, the historical centre of Lipník offers Renaissance buildings, the town hall, Baroque fountains, and St. Jacob's Church with a unique bell tower. The castle (the interior is not open to tourists) is surrounded by a landscaped park with a remarkable roof garden. The oldest synagogue in Moravia and two Jewish cemeteries recall the local Jewish history and culture.

www.mesto-lipnik.cz / Guide services: May–September, daily except Mon at 10am and 2pm ,
Free guided narrated tours of the town heritage zones, for more information and reservations in TIC. /
49°31'39.169"N, 17°35'10.707"E

Helfštýn Castle (5)

Helfštýn, one of the largest castles with the longest castle walls in the Czech Republic. You can view the castle premises on your own or with a guide. The tour includes a permanent exhibit of blacksmith art and a historical mint. For more than a quarter of a century, every year this major medieval structure has come alive with the famous gathering of artistic blacksmiths – the Hefaiston. Tyn nad Bečvou, Tel.: +420 581 797 093, www.helfstyn.cz / Guided tours March 22–October; 31 for groups of minimum of 8 people. Guided tours not available during all-day events.
Opening hours: April, September–October Tue–Sun 9am–5pm, May–August Tue–Sun 9am–6pm /
49°31'2.963"N, 17°37'39.065"E



5

Zubr Brewery

Komenského 35, Přerov,
Tel.: +420 581 270 111, www.zubr.cz,
www.zubrarana.cz / Free excursions (only for persons above the age of 18, and in some cases 15). Must be booked one week in advance, tours for groups of minimum of 10 people Opening hours: Mon–Wed 8am–2pm / 49°27'1.073"N, 17°26'51.580"E

Outdoor Centrum Helfštýn (6)



Test your courage and dexterity on rope obstacles hung above the ground between the trees, of course under the supervision of trained instructors. Route with 11 obstacles, 4 metres above the ground.

Tyn n. B. , Tel.: +420 774 178 538,
+420 775 921 423, www.helfstyn-outdoor.cz



6

Veselíčko – Mustang Horse Farm

Osmek 49, Tel.: +420 603 870 308,
www.rancmustangveselicko.cz /
49°31'49.718"N, 17°30'53.264"E



3



4

Events in 2013

Přerov

June 14–15, The Castle and the Village folk festival, Tel: +420 732 119 050

May, Dragon Boat Race Přerov

nám. TGM, Přerov, Tel.: +420 581 205 131
www.mu-přerov.cz

Dřevohostice

July International Festival of Brass Music

Tel: +420 581 297 911,
www.drevohostice.cz

Lipník nad Bečvou

June 15, Záhorско Festival

Folk festival, Tel: +420 581 771 142
www.mesto-lipnik.cz

July 26–27, St. Jakub's Feast, festival,

Tel: +420 581 771 142, +420 581 722 255

August

Helfštýn Castle

HEFAISTON 2013 – International gathering of artistic blacksmiths

Tel: +420 581 797 093, www.helfstyn.cz

Hranice Region



Hranice



Hranice, Masarykovo nám. 71
+420 581 607 479
mic@meu.hranet.cz
www.mic.hranet.cz



Beautiful walks through cities and the countryside, famous spas, unique caves and a gorge surrounded by legends... But also windmills, picturesque small churches, wayside shrines and crosses in the shade of trees. Welcome to the region of Hranice, a charming hilly landscape of dozens of towns and villages! In each and every one of them, you can find a reason for coming back to this region. Be it beautiful countryside, landmarks or cultural and social events. Why not make a trip here on a bike?



1

Hranice (1)

The town offers many points of interest for those who truly enjoy sightseeing. Some of the fantastic sights include the Renaissance castle with a unique roofed courtyard or a synagogue now used as a modern art exhibition hall. The nearby cemetery reminds Hranice's visitors of the historical local Jewish community.

www.mesto-hranice.cz, www.mic.hranet.cz / 49°32'52.675"N, 17°44'4.892"E

In the Footsteps of Mills

Accessible both by car and bicycle, tours can be booked by phone. For those interested in traditions and mill technology, there is the bike trail "In the Footsteps of the Harnessing the Water and Wind".

Skalička – Červek Mill

Tel.: +420 581 607 479, +420 581 626 202, www.povetmik.cz, www.obecskalkicka.cz, www.hranicko.eu / The mill is open if arranged in advance by phone. / 49°30'55"N, 17°47'45"E

Partutovice – Maršálek Windmill

www.povetmik.cz, www.hranicko.eu, Tel.: +420 581 607 479, +420 581 626 202 / The mill is open if arranged in advance by phone. / 49°37'52.757"N, 17°42'29.136"E

Poruba – Dutch-style mill

www.lhustopece.cz / 49°32'2.035"N, 17°54'4.198"E

Štřítež nad Ludinou – Humplík's Water Mill, Mineral Museum

Tel.: +420 581 607 479, +420 581 626 202, www.striteznl.cz, www.hranicko.eu / 49°36'33.618"N, 17°44'20.07"E

Potštát

The historical square dominated by a clock tower with a Baroque onion dome and the local chateau are among the most precious sights. The surrounding area invites visitors for trips, e.g. to the village of Lipná, where there is a small wooden Baroque church.

www.potstat.cz / 49°38'12.939"N, 17°39'6.247"E



2

Zbrašov Aragonite Caves and the Hranice Gorge -20–40 %



Caves of European importance. Remarkable formations are composed of the mineral aragonite, and the site also features raft stalagmites and walls with spherical incrustations known as doughnuts. Thanks to the temperature (14 °C) of the air inside, these caves are the warmest in the Czech Republic. The Hranice Gorge, the deepest in the Czech Republic, is located near the caves. Its bottom has not been reached as yet. The dry part of the gorge, visible from the top, is 69.5 m deep; the total documented depth is 442.5 m. The gorge is the second deepest freshwater gorge in the world. The gorge is freely accessible, by following the educational trail of the National Nature Reserve Hůrka near Hranice.

www.caves.cz, www.hranickapropast.cz, Tel.: +420 581 601 866, +420 581 601 866 / Opening hours of the caves: see the website / 49°31'53.400"N, 17°44'44.088"E



3

Teplice nad Bečvou Spa (4) -10 %



The spa located on the banks of the Bečva River offers attractive and peaceful green parks and, above all, high-quality services. It specialises in top-quality physical cardiotherapy for its clients, emphasising the prevention of cardiac arrests and strokes, as well as relaxation. It is one of only a few facilities in the Czech Republic that provide therapeutic frost treatment in the Arktika Polarium. The clients may also use the newly opened Moravan wellness centre.

[Tel.: +420 581 818 181, lazne@itnb.cz, www.itnb.cz](http://www.lazne@itnb.cz) / 49°31'54.102"N, 17°44'38.044"E



4

Kostelíček Pilgrimage Site (2)

Referred to as Kostelíček, the Church of the Birth of the Virgin Mary is a popular pilgrimage site. It includes a cemetery with 14 Stations of the Cross, a Late Renaissance gate, an Early Baroque Chapel of St. Anthony of Padua, and the Church of the Birth of the Blessed Virgin Mary with the Mary Magdalene Chapel.

Tel.: +420 581 607 479, www.hranicko.eu, www.mic.hranet.cz / Opening hours: 7 am–8 pm / 49°33'2.764"N, 17°45'25.653"E

Bee-keeping Museum – a permanent exhibition

[Potoční 818, Tel.: +420 605 876 949, +420 737 962 978, www.byskovice.cz](http://www.byskovice.cz) / Open by appointment only.

Býškovice

"Double Exhibition – The General Bohuslav Závada Museum and Býškovice Throughout the Centuries."

www.byskovice.cz / 49°28'12.00"N, 17°43'12.00"E

Běloutín – The Memorial Hall

Tel.: +420 581 612 100, www.belotin.cz / 49°34'31.593"N, 17°46'35.700"E

"What Life Was Like in Ójezd" – an exposition

[Stará škola 75, Všechnice, www.mic.hranet.cz](http://www.mic.hranet.cz), Tel.: +420 581 622 693 / Open by appointment only. / 49°27'39.009"N, 17°45'17.439"E

Butcher's Museum

[Zámek Hustopeče nad Bečvou, www.mic.hranet.cz](http://www.mic.hranet.cz), Tel.: +420 581 626 111 / Open by appointment only. / 49°31'48.832"N, 17°52'10.401"E

Hranice Water Park (5) -33–54 %



[Žáčkova ul., www.aquaparkplovamahranice.cz](http://www.aquaparkplovamahranice.cz), Tel.: +420 581 606 060 / 49°32'37.119"N, 17°43'31.322"E

On Horseback

Horse trail in the Potštát Region TIP

If you love horseback riding, try out the brand-new 31-km-long horse-riding trail near the town of Potštát. It features a marked trail, resting places, hitching posts and, of course, an information panel with a map.

www.hranicko.eu



5

Rouské, JUKO Riding Stables

[Rouské 72, Tel.: +420 739 048 258, www.juko.estranky.cz](http://www.juko.estranky.cz) / 49°28'17.138"N, 17°46'32.741"E

Slavič, Coufalík Kolňa Riding and Tourist Stables

[Horní Lomná 72, Morávka, Tel.: +420 558 366 087, www.kolarovachata.cz](http://www.kolarovachata.cz) / 49°33,223' N, 18°37,078' E

Hluzov – R Appaloosa's Farm

[Tel.: +420 608 148 574, +420 774 066 819, www.rappaloosasfarm.cz](http://www.rappaloosasfarm.cz) / 49°32'31.452"N, 17°46'42.144"E

Boňkov Stable

[Tel.: +420 732 751 269, www.stajbonkov.estranky.cz](http://www.stajbonkov.estranky.cz) / 49°36'16"N, 17°41'10"E

Events in 2013

Hranice,
Tel.: +420 581 828 170, www.mkz-hranice.cz
April, European Jazz Days – jazz festival
July–August, Hranice Summer of Culture
September Days of European heritage

Běloutín
April, Běloutín festival, www.belotin.cz
22–23 June Beer festival
– for all lovers of the golden potion,
Tel: +420 581 612 100



Prostějov Region



Prostějov



Prostějov, Pernštýnské nám. 8
+420 582 329 723 Sale
informace@prostejov.eu
www.prostejov.eu

Richly decorated folk costumes and folklore that is still alive are some of the attractions of the Prostějov region. There are other eye-pleasing sights to see, such as architectural landmarks and, in particular, the Art Nouveau National House, a venue for many social and cultural events. And let's not forget the Museum of Carriages and the Chateau in Čechy pod Kosířem. Sit for a while in the chateau park, relax and enjoy the beauty!

Prostějov (1)

Prostějov, a town with a remarkable town hall and the superb Art Nouveau architecture of the National House, a National Cultural Monument designed by Jan Kotěra, as well as many other interesting landmarks, is a place not just of traditions, history and culture, but also sports. There is a modern outdoor water park, the Hotel Tennis Club with tennis courts, bowling and squash, and many other facilities.

www.prostejov.eu / 49°28'20.312"N, 17°6'34.865"E

Exhibition hall of the Prostějov Chateau

Pernštýnské nám. 8, Prostějov, www.prostejov.eu,
Tel.: +420 582 329 723 / Opening hours:
Mon-Fri 9am-5pm, Sat-Sun 9am-12pm /
49°28'26.591"N, 17°6'31.558"E

Prostějov Museum /

nám. T. G. Masaryka 7/2, www.muzeumpv.cz,
Tel.: +420 582 330 991 / Opening hours:
Tue-Sun 9.30am-12pm, 1pm-5pm /
49°28'18.880"N, 17°6'41.371"E

Prostějov National House

Art nouveau building.

Vojáčkovo nám. 1, Tel.: +420 582 329 611,
www.narodni-dum.info / National cultural
monument, visits possible with prior agreement
by telephone. / 49°28'24.845"N, 17°6'52.719"E

Minibrewery U krále Ječmínka

Újezd 4, Prostějov, Tel.: +420 582 346 401,
www.ukralejeckminka.cz

Water Park Koupelky (2)

Recreational, multi-purpose and children's
swimming pool, water attractions.
Krasická 6, Prostějov, Tel.: +420 582 330 895,
www.dsp-pv.cz / 49°28'0.944"N, 17°5'24.565"E

Sports Centre of the Hotel Tennis Club -20%

Squash, tennis, bowling, badminton, sauna,
steam room, solarium.
Za Kosteleckou 49, Prostějov, www.sportonline.cz,
Tel.: +420 582 402 509 / Opening hours:
Mon-Sun 7.00-23.00 / 49°28'51.586"N,
17°6'4.312"E

JUMP-TANDEM -10%

Tandem skydiving, parachuting courses,
sightseeing flights, gift packages., children's
playground, accommodation.
Letecká 1, Tel.: +420 724 175 175,
www.jump-tandem.cz/
49°27'41.266"N, 17°7'45.847"E

Čechy pod Kosířem

In addition to the chateau surrounded by romantic gardens, Čechy pod Kosířem is also the seat of one of the largest firefighting museums in Moravia and of a newly emerging unique museum of historic horse-drawn coaches. While walking around the gardens full of exotic trees from all over the world, you will discover a man-made cave and a number of small structures.

Čechy pod Kosířem Chateau

The park and orangery are open to visitors. The chateau is under reconstruction.
Tel.: +420 585 515 111, www.vmo.cz / Opening hours: the Castle Park is open year-round /
49°32'59.691"N, 17°2'15.421"E

Firefighting Museum (3)

náměstí Svobody 56, Tel.: +420 582 373 726, www.cechypk.cz/hasiske-muzeum / Opening hours: April-
October Fri, Sat, Sun, June-August daily except Mondays 10am-12pm, 1pm-5pm / 49°33'7.297"N,
17°1'49.325"E

Museum of Historical Carriages / free, Sale **TIP**

Largest collection of carriage lanterns in Central Europe, largest collection of funeral carriages,
restoration workshop part of the tour, reconstructed and original carriages, sound and light
effects, projection.

Náměstí Svobody 377, Čechy pod Kosířem, www.historickekocary.cz, Tel.: +420 608 610 324 / Opening hours:
Tue-Sun 9am-5pm, October-March: appointment by phone possible / 49°33'4.399"N, 17°2'4.635"E



4

Plumlov Palace (4)

The monumental chateau attracts visitors with its unusual appearance and unique interiors. The construction of this Early Mannerist chateau on the site of a 13th-century castle was commenced by Jan Adam of Lichtenstein in 1680. Of the four magnificent wings planned originally, only one was completed. It now houses an exhibition titled The Wings of Victory, documenting aviation during WW II.

Tel.: +420 773 444 500, www.zamek-plumlov.cz / Opening hours: April, October Sat, Sun, public
holidays 1pm-6.00pm, May, June, September Sat, Sun, public holidays 10am-6.00pm, July-August
Tue-Sun 10am-6.00pm. Guided tours for a minimum of 4 people, last admission at least an hour
before closing time.

The Plumlov Lake

The largest lake in Central Moravia is a favourite destination of holidaymakers and sportsmen. It offers two grassy beaches and boat and paddle boat rentals. The vast expanse of water is often used by lovers of water sports. Restoration works on the Plumlov Lake began in 2010. From 2013, swimming will be possible again..

Tel.: +420 582 393 217, www.mestoplumlov.cz / 49°28'0.739"N, 17°2'12.638"E

Baldovec (5) -10%, Sale **TIP**

Holiday for the whole family and adrenaline-filled experiences deep in the forests. Also available are a swimming pool, sports rental, tennis and volleyball courts, football field, and a playground.
Baldovec 319, Rozstání-Baldovec, Tel.: +420 582 395 440, +420 606 744 265, www.baldovec.cz/
49°24'47.345"N, 16°48'30.730"E



3

Events in 2013

Prostějov June 11-15, Walker's Prostějov

55th year of the national poetry festival
commemorating the poet J. Wolker, a native of
Prostějov, Tel.: +420 582 351 477

June-September Prostějov Summer 9+1
(T. G. Masaryk square, chateau courtyard,
aquapark) music, creative and theatre
activities, Tel.: +420 582 329 620,
www.prostejov.eu

September 14-15,
31st Annual Prostějov Haná Festival, Folk
festival, fair,
Tel.: +420 582 329 620, www.prostejov.eu

Čechy pod Kosířem
July 20-21, Annual International Meeting of
wheeled transport enthusiasts,
www.cechypk.cz



5



1



2

Konice Region



Chateau Konice



Konice, Kostelní 46
+420 582 334 987
+420 739 333 721
icko.konice@seznam.cz
www.konice.cz
www.mekskonice.cz



Compared to pulsating city life, the Konice region is a peaceful and quiet oasis of nature. The picturesque Dražanská highlands offer dozens of possibilities for hiking and cycling trips. You will be swept away by the Kladecko Nature Park, which forms part of an educational trail. Also noteworthy is a pilgrimage site in Jesenec, where the beauties of nature are joined by the results of human efforts. Jednov, Hvozď and Hačky boast preserved mills. Brass music enthusiasts must not miss the traditional Žváček festival. The Konice region is characterised by nature, relaxation and well-being.

Konice Chateau, Customs and Crafts Exhibition (2)

The Baroque chateau in Konice was built at the beginning of the 18th century and you can tour it all the year round within the opening hours of the tourist information centre. The western wing of the building, with its square-shaped courtyard, contains the most valuable part of the chateau, a monks' refectory. Its ceiling is adorned with a rare fresco "the Holy Family at Table", probably painted by the Hradisko Premonstratensian Bedřich Diviš Straus around 1720. The ground floor of the Konice chateau houses a unique exhibition of customs and crafts, with rare exhibits. The most valuable piece is considered to be the oldest tower clock mechanism in the Konice region. **Kostelní 46, Konice, www.konice.cz, Tel.: +420 601 590 006, +420 582 397 250 / Opening hours: Mon–Fri 9am–12pm, 13:00–16:00, 1. 6.–30. 9. Sat 9am–12pm, 1pm–5pm, Sun 2pm–5pm / 49°35'20.775"N, 16°53'27.488"E**



1

Konice hot air balloon rides (1) **TIP**

Visiting Konice, you simply cannot miss the opportunity of flying in a hot air balloon. Together with the balloonist, fly a hot air balloon. Balloon flights depend on the weather. The flights take place year-round, most often in the mornings and early evenings. The entire duration of the flight, including the preparation and the subsequent packing of the balloon, takes about 3 hours, with the flight itself lasting 1 hour. **Nad Safraní 683, www.balonykonice.cz, Tel.: +420 602 852 904, +420 773 113 911 / The service operates daily when the weather is favourable.**



2

On Horseback

Polomí - JK Stable Brettnyňa
Polomí 5, Hvozď, Tel.: +420 605 734 271,
www.brett.webnode.cz/
49°37'53.823"N, 16°56'47.467"E

Arka stables
Lhota u Konice, Tel.: +420 602 361 569,
www.stajarka.info/ 4
9°33'40.397"N, 16°51'18.685"E
Hvězdov ecofarm
Štarnov 61, Konice,
Tel.: +420 724 555 404, www.hvezdov.info/
49°34'16.528"N, 16°55'31.944"E
Murhof Horse-Breeding Farm, Jesenec
Tel.: +420 607 693 587, www.hrabcinmurhof.cz/
49°36'9.483"N, 16°51'34.333"E
Hvozď AMALTHEA
Hvozď 59, Hvozď u Prostějova, Tel.: +420 777 262 694,
www.farmahvozď.webpark.cz
49°38'5.151"N, 16°54'43.518"E

Central Haná Region



Ride of the Kings



Kojetín, Masarykovo nám. 8
+420 581 202 202
info@meks.kojetin.cz
www.kojetin.cz

Central Haná is a locality with a rich Haná culture and history. Typical examples are the traditional feasts in Kojetín or in Němčice nad Hanou. They will take you into a world of dancing, singing, great food and fun. Tourists desiring to absorb the local atmosphere of years gone by must visit the Tovačov chateau.

Tovačov

This traditional festival full of dancing, singing, joy, and various delicacies will draw you into its unique atmosphere. If you prefer discovering the long-gone past and the magic of monuments, the gates of several chateaux and gardens are wide open to welcome you.

Tovačov Chateau (1)

Cimbarkova 2, Tovačov, Tel.: +420 581 731 309, 723 334 794, www.zamek.tovacov.cz/ / Opening hours: April–October Sat, Sun 10am–5pm, June–August Tue–Sun 10am–6.00pm, public holidays 10am–6.00pm / 49°25'48.895"N, 17°17'29.802"E

Kojetín

The Baroque church with a double tower is the dominant feature of this town. Likewise worthy of interest is the local town hall or the Marian Baroque column. One of the oldest synagogues and a Jewish cemetery recall the local Jewish community. The folk festival Kojetín Feast is famous for its Ride of the Kings. Enjoy active relaxation at the water centre with three swimming pools. www.kojetin.cz/ 49°21'6.459"N, 17°18'7.442"E

Kojetín Regional Museum

Masarykovo nám. 18, Kojetín, www.kojetin.cz, Tel.: +420 581 202 202, +420 774 001 403 / 49°21'7.372"N, 17°18'5.749"E

Pantlák folklore group

Masarykova 239, Tel.: +420 605 161 741, www.pantlek.7x.cz

Kojetín swimming pool

Závodí, Tel.: +420 581 761 830, www.kojetin.cz/ 49°21'25.454"N, 17°18'19.376"E

Kojetín Boathouse

Závodí 1371, Tel.: +420 777 783 705, www.kanolistika.estranky.cz

Polkovice Haná Homestead

Polkovice 198, Tel.: +420 733 708 378, www.hanackydvor.cz, 49° 23' 32"N, 17° 15' 22"E

Němčice nad Hanou

The most important sights of Němčice na Haně include the Church of St Mary Magdalene and one of the last preserved typical Haná porches. Visitors may, however, admire only the exterior. In the summer Němčice comes to life with a traditional festival prepared by the Pantlák folklore group. www.strednihana.cz, www.nemcicenh.cz



1

Events in 2013

Kojetín
August 16–18, Folk Festival Kojetínské hody 2013
Tel.: +420 581 762 046, www.kojetin.cz/meks
Tovačov
July, Tovačov Portal, Folk Festival
Tel.: +420 723 334 794, www.tovacov.cz
September, Folk Festival Feast of Tovačov
Tel.: +420 723 334 794, www.tovacov.cz

Šternberk and Uničov Regions



Šternberk Time Exhibition

The Šternberk region attracts both young and adult visitors with interesting cultural and social events, as well as the international sports competition held on the famous Ecce Homo track. Another pleasant way to relax is to enjoy the beautiful local landscape and visit Šternberk Castle. The Uničov region offers you a whole range of museums and offers a number of cycling routes, including interesting hiking and educational trails.



Šternberk, ČSA 19
+420 587 571 243
mic@mkzsternberk.cz, www.sternberk.eu

Moravský Beroun, náměstí 9. května 4
+420 554 773 147
+420 554 254 546
info@morberoun.cz
www.morberoun.cz



Uničov, Masarykovo nám. 29
+420 585 054 880
+420 603 996 312
mic@unicov.cz
www.unicov.cz



The Urban Historical Zone of Šternberk

The dominant feature of this modern town is Šternberk Castle, in the vicinity of which you will find the former Augustinian monastery with the Church of the Annunciation of the Blessed Virgin Mary. An art gallery of the same name, located within the Šternberk Monastery, houses paintings by the Baroque painter Handke. In Olomoucká Street, you can visit the Hospital Church, which serves as a reminder of the hospital that was there until 1908. The town has an original information system – the so-called “klikotoč”, a device based on handles instead of electricity. There are nine such information spots around Šternberk, where you can learn the most interesting information about the town.

www.sternberk.eu / 49°43'49.601"N, 17°17'55.999"E

Šternberk Time Exhibition **TIP**

Designed mainly for kids, young people and families, the exhibition will bring you both fun and interesting information. Thanks to it you will get a peek at the Universe, where nearly 14 billion years ago time started ticking with the Big Bang, and test your knowledge of the solar system through an interactive game. There are 250 unique exhibits, works of art and interactive programmes.

ČSA 113/19, Šternberk, Tel.: +420 587 571 278, +420 587 571 243, www.expozicacasu.cz / 49°43'46.418"N, 17°17'50.668"E

Šternberk Castle (1) / free, Sale

The castle was often rebuilt, expanded and modified so it is possible to find elements of all the architectural styles here – from the Gothic style to Classicism. The interior is interesting for its artistic decoration from the 14th–19th centuries and for pieces of art by Dutch, Italian, German and Czech artists. Extremely rare is a group of Gothic and Renaissance wood sculptures, as well as a collection of tiled stoves. For foreigners there are audio guides available while touring the castle.

Horní náměstí 6, Šternberk, Tel.: +420 585 012 935, +420 602 543 562, www.hrad-sternberk.cz / Opening hours: April Sat, Sun and public holidays 10am–5pm, May–June Tue–Sun 10am–5pm, July–August Tue–Sun 10am–6.00pm, September Tue–Sun 10am–5pm, October Sat, Sun and public holidays 10am–5pm / 49°43'59.446"N, 17°18'6.522"E



1

Ecce Homo Šternberk (2) **TIP**

For more than a century, each year the best European drivers have come to Šternberk to compete on the famous Ecce Homo track.

www.eccehomo.cz / 49°43'36.27"N, 17°18'10.821"E

Moravský Beroun

The town is dominated by the Church of the Assumption of the Virgin Mary, which boasts the oldest organ in Moravia and a picture gallery of Kryštof Handke. It is the starting point for hikes, for example to the highest point of the Nízký Jeseník foothills – Slunečná, to Ondrášov with its renowned acidulous water, or to the valley of the Bystřice Stream. The J.E. Purkyně trail, which starts in Dvorce, runs through Stará Voda in the Libavá area with the pilgrimage church of St Anna and St James the Greater, and ends in Budišov nad Budišovkou.

www.morberoun.cz / 49°47'37.475"N, 17°26'31.618"E

Uničov (3)

The town of Uničov, boasting the oldest surviving founding charter in the Czech Republic, dating back to 1213, has many landmarks to be proud of. Chief among these are the Neo-Gothic Church of the Assumption of the Virgin Mary and the Church of the Elevation of the Holy Cross, restored in the Baroque style after a fire. Today, it serves as a concert hall and a gallery. To remind visitors of history, there are the local museums. For relaxation, visit the outdoor swimming pool with a water slide, an indoor pool and various other sporting facilities.

www.unicov.cz, www.unicovsko.cz / 49°46'15.299"N, 17°7'17.171"E

The Penal Museum **TIP**

The Uničov manor jail is preserved in basically intact form. It features not only an exhibition dedicated to the development of criminal law and the judicial system but also original instruments of torture and their replicas, which you can try out. The jail is complete with a gendarmerie station and a town jail dating back to the end of the 19th century. The cells still carry memories of the convicts, for example messages carved into the original oak door

Příční 205, Tel.: +420 734 513 953, www.muzeumunicov.cz / Opening hours: September–June Wed–Fri 2pm–5pm, Sun 10am–5pm, July–August Tue–Sun 10am–5pm / 49°46'9.025"N, 17°7'18.267"E

Šternberk municipal swimming pool (4)

Svatoplukova 15, Tel.: +420 725 120 004, www.sternberk.eu / Opening hours: June–September 9am–19.00, 19.30–21.30 / 49°43'23.903"N, 17°18'15.955"E

Šternberk Tennis Club

Svatoplukova 15, Tel.: +420 725 120 002, www.tksternberk.cz / 49°43'23.959"N, 17°18'16.085"E

The Museum of the Baroque

Kostelní nám. 153, Tel.: +420 602 395 271, www.zacheusunicov.cz / May–October Sun 10am–12pm, 2pm–5pm / 49°46'16.377"N, 17°7'9.246"E

Uničov municipal swimming pool

Masarykovo nám. 29, Tel.: +420 585 054 880, www.unicov.cz / 49°46'14.08"N 17°7'14.26"E

Uničov go-kart track

Šumperská 1195, Uničov, Tel.: +420 605 802 785, www.motokary-unicov.cz / Opening hours: Mon–Thu 3pm–22.00, Fri 3pm–24.00, Sat 1pm–24.00, Sun 1pm–22.00 / 49°46'50.397"N, 17°7'16.363"E

Střelice – Village Museum

The Village Museum in Střelice houses a lot of unique exhibits documenting the everyday life of the villagers. From coal irons and dishes to other items the ancestors of the present inhabitants of the village would use on a regular basis in their households and workshops.

Střelice 100, Tel.: +420 585 054 758, www.unicov.cz / Opening hours: June–August Sun 2pm–5pm, Other times available by agreement. / 49°45'2.345"N, 17°5'32.473"E



4



2



3

Events in 2013

Šternberk
Tel.: +420 587 571 243, www.sternberk.eu

June, Ecce Homo
European Hill Climb Championships
Tel: +420 585 013 400, www.eccehomo.cz

July, Šternberk Mound
10th annual rock festival,
Tel: +420 736 534 798

September Šternberk, Ecce Homo Historic
Vintage car climb races,
Tel: +420 585 013 400, www.eccehomo.cz

Uničov, www.unicov.cz
June 16, The Uničov Fair to celebrate the
800th anniversary of the founding of the town



Litovel Region



Litovel



Litovel, nám. Přemysla Otakara 754
+420 585 342 300 **Sale**
info@bavi.cz, www.bavi.cz
www.litovel.eu
www.mikroregionlitovelsko.cz

Romantic walks through the countryside, the Javoříčko Caves with their beautiful stalactite and stalagmite formations, adrenaline, as well as peaceful boat and bicycle rides in the Litovelské Pomoraví, a location with many protected plants and animals, and last, but certainly not least, the unforgettable Bouzov Castle and the Náměšť na Hané Chateau, coming alive with various events during the season. This is the Litovel region, waiting for your visit.



1

Litovel Museum

Smyčková 795, www.muzeumlitovel.cz,
Tel.: +420 585 341 465 / Opening hours:
June–September Wed–Sun 9am–5pm,
October–May Wed–Sun 9am–4pm /
49°41'59.950"N, 17°4'26.202"E

Litovel Town Hall

nám. Přemysla Otakara, Tel.: +420 585 371 076,
www.litovel.eu / Opening hours: 10:30am–2pm.
Narrated climb up the tower, reservations at
the information centre, minimum of 7 people
required or a minimum charge of CZK 100 /
49°42'5.472"N, 17°4'30.145"E

Litovel The Venice of Haná (1)

Six branches of the Morava River flow through this town, which is aptly called "The Venice of Haná". Built in 1592, St. John's Bridge is one of the most important sites – the third oldest functioning stone bridge in the country. The square holds a town hall with a 72-metre observation tower, offering a beautiful view. The Historical Litovel educational trail will teach you about the monuments in the city centre; two other educational trails take visitors to the surrounding countryside. You can refresh yourself with a beer from the local brewery, which has a tradition stretching back more than a hundred years.

www.litovelsko.eu, www.mikroregionlitovelsko.cz / 49°42'4.361"N, 17°4'34.135"E

The Litovel Morava River Basin

The protected landscape area extends between Olomouc, Litovel and Mohelnice as a 3-8-km-wide strip along the Morava River. The total area is 96 square kilometres. The area is typical for the meanders of the Morava River, lakes created from former sand quarries and alluvial forests with plenty of waterlogged soils and typical flora. The area is laced with cycling routes and paths, and is a paradise for easy walks and bike rides. The most famous one is the Moravian Trail, with the Litovel Morava River Basin Floodplain educational trail. The area is also popular for rafting.

Mikroregion Litovelsko, nám. Přemysla Otakara 778, Tel.: +420 585 344 156, +420 585 344 157, www.litovelsko.eu, www.litovelskepomoravi.ochranaprirody.cz / 49°42'5.094"N, 17°4'29.459"E

Litovel Brewery

Palackého 934, Tel.: +420 724 776 392,
www.litovel.cz / Excursion including tasting
for groups (of a minimum of 15 people), must
be booked in advance. / 49°41'40.704"N,
17°4'35.271"E

St. John's Bridge

It dates back to 1592 and is one of the most beautiful buildings in the town. It is the third oldest stone bridge in Moravia and the third oldest in the Czech Republic.

www.litovel.eu / 49°42'18.504"N, 17°4'35.292"E

Javoříčko Caves -15–40%

The Javoříčko Caves are admired for the unique stalactite beauty of the underground kingdom. The passages in the complicated underground complex connect giant and sensitively lit domes and halls full of bizarrely shaped stalactites, which are rich in both forms and shapes. The caves are considered among the most beautiful ones in the Czech Republic. There are two tours available – 800 m or 450 m long.

Slavětín u Litovle, Tel.: +420 585 345 451, www.caves.cz / Opening hours: April Tue–Sun 9am–3pm, May–September Tue–Sun 9am–5pm, October Tue–Sun 9am–3pm / 49°40'13.791"N, 16°54'48.51"E

Mladeč Caves -22–50%

The caves are located in the Litovel Morava River Basin protected nature area. The underground spaces are richly decorated with stalactites and sintered crusts. Among the most beautiful parts of the caves are the so-called "Nature's Temple" and "Virgin Cave". Findings of human bones and stone tools document the long and rich history of these caves.

Mladeč, Tel.: +420 585 347 148, www.caves.cz / Opening hours: April Tue–Sun 9am–3pm, May–September Tue–Sun 9am–4.30pm, October Tue–Sun 9am–3pm / 49°42'23.211"N, 17°0'56.713"E

Arboretum Bílá Lhota – National nature landmark

/ free

Nature lovers will find walking around the peaceful pond an ideal spot for relaxation. The arboretum of nearly 3 hectares holds almost 500 species of both European and exotic decorative trees. The original trees, planted here at the time when the park was founded around 1700, are a true rarity.

Tel.: +420 585 340 075, +420 585 340 081, www.volny.cz/arboretum / Opening hours: April, October Sat–Sun 9am–5pm, May–September Tue–Sun 8am–6.00pm / 49°42'35.289"N, 16°58'35.24"E

Bouzov Castle – National cultural monument (2) free, Sale

One of the most visited and most graceful castles in the country dominates the landscape of rolling green hills around the town of Bouzov. The magical and attractive surrounding area of the castle has drawn countless producers of both Czech and foreign fairytales. Remodelled for the last time in 1910, the spectacular castle creates a perfect illusion of medieval times and attracts great attention with its bright red roofs and towers. There are several tours available, including the castle observation tower. Historical performances with an attractive programme and displays of historical weapons are also on offer.

Bouzov 8, Tel.: +420 585 346 202, www.hrad-bouzov.cz / Opening hours: April, October Sat, Sun, public holidays 9am–4pm, May, September Tue–Sun 9am–5pm, June Tue–Sun 9am–6.00pm, July–August Tue–Sun 10am–19.00 (The last tour is always 1 hour or an hour and a half before closing.) / 49°42'17.71"N, 16°53'22.11"E

The Chateau in Náměšť na Hané free, Sale

Come and visit the early Classical chateau in the French style, standing in the middle of a circular park with four paths running in the cardinal directions of the compass, lined with linden trees over 200 years old. During the tour of the chateau, you can admire rare collections which are nowhere else to be seen. These include a collection of antique prams, a valuable collection of Meissen porcelain and an exhibition of the carriages of the Archbishops, from the 18th and 20th centuries.

Hrad 1, Tel.: +420 585 952 184, www.zamek.namestnahane.cz / Opening hours: April, October Sat, Sun, public holidays 9am–4pm, May–September Tue–Sun 9am–5pm. The last tour is always 1 hour before closing. Saturday mornings reserved for weddings. / 49°35'55.599"N, 17°3'45.662"E

Cholina – Haná Ethnographic Museum

The museum is situated in the building of the municipal office, in the premises of a former granary. There are almost a thousand exhibits. You can admire traditional Haná costumes, a showcase of famous natives, a collection of old money from various parts of the world, excavations and historical documents.

Cholina 52, Tel.: +420 585 348 026, www.obeccholina.cz / Opening hours: Mon, Wed 8am–5pm, Tue, Thu 8am–2pm, Fri 8am–12pm / 49°39'26.291"N, 17°3'6.570"E



2

Events in 2013

Litovel, www.mkdlitovel.cz

June, Litovel, The Venice of Haná

Town festival, Tel.: +420 585 341 633

August 11 Litovelský otvůrák, Excursion to the brewery, music and entertainment programme

August, Bobr Bíke

International Czech Championships of extreme

3-man team relays, Tel.: +420 585 342 941

www.inrace.cz, www.freelitovelsport.cz

Náměšť na Hané

August, Haná Festival

21st year of the traditional harvest festival,

www.gong.ic.cz

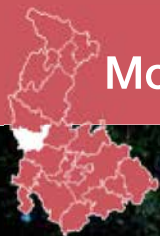
Bouzov, www.hrad-bouzov.cz

August, Balloons over the Castle

Gathering of hot-air balloons

Theresian Valley Nature Reserve

The Theresian Valley charms tourists with colourful meadow flowers, alluvial woods and romantic wetlands. A hill called Rmíz is home to thermophilic oak woods with rare plant species. A six-kilometre-long educational trail crosses the Theresian Valley
www.strednimorava-tourism.cz /
49°36'7.663"N, 17°3'55.413"E



Mohelnice Region



Mohelnice



Mohelnice, Lazebnická 974/2
+420 583 430 915 Sale
info@icmohelnice.cz
www.infomohelnice.cz

What does "the Mohelnice region" suggest to you? The Mohelnice Stagecoach, the Hunting and Forestry Museum at the Úsov Chateau or the Olomoucké tvarůžky curd cheese? Yes, all these are connected to this region, lying between Central Moravia and the Jeseníky Mountains. And did you know that in Loštice, where tvarůžky have been made for centuries, there is also the historically first vending machine for this gourmet cheese? Choose whatever suits you best from this region's menu!

Mohelnice

The most important sights and monuments in Mohelnice include the square-shaped tower of St. Thomas of Canterbury and a Bishop's Castle, where you can visit a museum with interesting exhibits. Come and enjoy the events organised here – the most famous is the Mohelnice Stagecoach, one of the most prestigious music festivals in the Czech Republic. If you wish to spend your spare time in an active way, choose the Morava Auto-Camp recreation centre or any of the many hiking and bike trails.

www.regionmohelnicko.cz / 49°46'37.144"N, 16°55'10.062"E

Úsov Chateau (1) free, Sale **TIP**

One of the oldest preserved northern Moravian chateaux houses a unique hunting-forestry museum, unique in Central Europe. While visiting, you can see approximately ten thousand exhibits, from various stuffed exotic and local animal species, antlers and insects, to models of forestry constructions, hunting and poaching weapons and other curios.

Zámecká 1, Tel.: +420 583 435 111, www.usov-muzeum.cz, www.muzeum-sumperk.cz / Opening hours: April, September–October Tue–Sun 9am–16.15, May–June Tue–Sun 9am–19.00, July–August Tue–Sun 9am–19.30, the last tour 45 minutes before closing time / 49°47'56.568"N, 17°0'52.037"E



1

Loštice **TIP** free

In the museum close to the central square of Loštice, you can discover the secret of the production of Olomoucké tvarůžky – the only original Czech cheese, with its distinctive strong taste and aroma. This unique delicacy, well known in the Czech Republic and abroad, has been made in the local factory for more than 130 years. A visit to the museum takes you through the exhibition and also gives you an opportunity to watch an interesting film about the history of the production of tvarůžky in Loštice. The cheese itself may be bought in the factory shop (Mon–Fri 7.30am–6pm, Sat 8am–12pm, 12.30pm–3.30 pm) or the unique vending machine in the hallway of the U Coufalů restaurant.

The Museum of Olomoucké Tvarůžky (3)

Palackého 4, Tel.: +420 583 401 211–2, www.tvaruzky.cz / Opening hours: July–August Mon–Sun 9am–15.30pm, September–June only by previous appointment, 8 persons minimum / 49°44'46.039"N, 16°55'40.299"E

Sale of delicacies in Loštice

Komenského 325, Tel.: +420 583 455 062, www.mcteroz.cz / 49°44'43.383"N, 16°55'45.746"E

Synagogue in Loštice (2)

The synagogue houses a permanent museum and the Library of Otto Wolf. There are regular exhibitions, concerts, seminars and educational programmes for schools. The first wooden synagogue was built in Loštice around 1560. Over the years, it was replaced by a new one, which was reconstructed in the Classical style. In this form, the building has been preserved to this day. A memorial plaque devoted to the victims of the Holocaust was unveiled in the synagogue in 2003.

Tel.: +420 775 264 206, www.respectandtolerance.com / Opening hours: weekends and public holidays 1pm–5pm, or open by appointment only / 49°44'31.060"N, 16°55'35.547"E

Adolf Kašpar Memorial free, Sale

Palackého ulice 343, Loštice, www.muzeum-sumperk.cz, Tel.: +420 583 445 256 / Opening hours: Tue–Sat 9am–12pm, 12.30pm–4pm / 49°44'46.914"N, 16°55'31.904"E



3

Mohelnice Museum (4)

free, Sale

Permanent exhibition: The History of the Mohelnice Region. Won the prestigious Gloria musaealis award as the best exhibition of 2005.

Kostelní nám. 3, Mohelnice, www.muzeum-sumperk.cz, Tel.: +420 583 430 693 / Opening hours: Tue–Sat 9am–12pm, 12.30pm–4pm / 49°46'39.656"N, 16°55'9.336"E

Háj water power plant, Třeština-Háj (5)

Nationales Naturdenkmal www.regionmohelnicko.cz / Open by appointment only. / 49°48'12.839"N, 16°56'20.754"E



4



5



2



Events in 2013

Mohelnice

May 25–26, Truck Trial

The toughest truck trial in the Czech Republic
Tel: +420 602 529 609
www.velkacenamohelnice.cz

August 29–September 1, Mohelnice Stagecoach

37th annual music festival of folk and tramping songs
Tel: +420 583 430 099
www.mohelnickydostavnik.cz

Loštice

www.mu-lostice.cz

May The Loštice Tvarůžky Walk

June The Loštice Festival of Music and Tvarůžky

Jeseníky – A mountain paradise in summer and in winter



Jiřího chalet below the Šerák

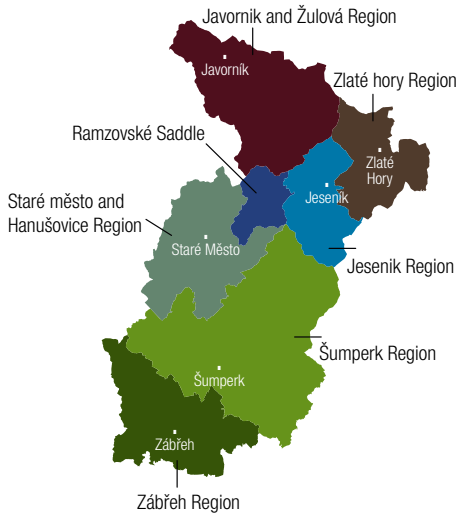
The Jeseníky Mountains are a symbol of beautiful scenery, rich history, and cultural, technical and religious monuments. The mountains include the Hrubý Jeseník mountain range with its foothills, the Rychleby Mountains, Králícký Sněžník and the Nízký Jeseník Mountains. The picturesque scenery will entice you with its tourist, educational and pilgrimage routes. Hikers and cyclists will love the enchanting views of the landscape, the local architecture, cultural events and the wide selection of treatments in the spa complexes.

Contents

Šumperk Region	32 – 33
Velké Losiny and surrounding area	34 – 35
Zábřeh Region	36 – 37
Staré město and Hanušovice Region	38 – 39
Ramzovské Saddle	40 – 41
Jeseník Region	42 – 43
Zlaté hory Region	44 – 45
Javorník and Žulová Region	46 – 47

Make your travels easier with cycling buses

Easy transport of cyclists and hikers, as well as other travellers. For more information and the timetable go to www.veolia-transport.cz or visit selected information centres. Useful info: www.cykloserver.cz, www.cyklivitanl.cz



Jeseníky – Tourist Association
Professional Tourism Organizations
Kladská 233/1, 787 01 Šumperk
Tel.: +420 583 283 117
E-mail: sekretariat@jesenikytourism.cz
www.jesenikytourism.cz
www.facebook.com/navstivtejeseniky.cz

Šumperk Region



Šumperk



Šumperk, Hlavní třída 22
+420 583 214 000 **Sale**
icsumperk@seznam.cz
www.infosumperk.cz

Bludov, Tř. A. Kašpara 353
+420 583 238 177
kulturni.dum@bludov.cz
www.bludov.cz

Rapotín, Šumperská 530
+420 583 212 211 **Sale**
ic@kkrapotin.cz
www.kkrapotin.cz

Šumperk and the surrounding area surprise with a broad range of trips to the countryside, historical one-offs, cultural events and sports activities. Thanks to its architectural sights, the town is sometimes called Little Vienna. Come and see for yourselves that Šumperk is often fascinating until the early hours.

Šumperk (1)

The town of Šumperk lies on the main road to Poland and is designated as the southern "Gateway to the Jeseníky Mountains.". You will learn about the beauties of the historical centre best on a guided tour, and you can choose from several options. By climbing the town hall tower you will get a fine view not only of the town but also of the fascinating panorama of the Jeseníky Mountains, with its highest mountain – Praděd. Try some of the numerous bike trails. And do not miss the folk festival held in August.

49°57'55.145"N, 16°58'13.605"E / www.sumperk.cz

Guided tours around the town **TIP**

A Walk from the 13th to the 21st Century, Where Witches Lived in Šumperk, Origins of "Small Vienna"
Nám. Míru 1, Šumperk, Tel.: +420 583 388 610, E-mail: pruvodce@sumperk.cz, www.sumperk.cz /
Opening hours: June, September Mon–Sun 9am–3pm, July, August Mon–Sun 9am–12pm, 1pm–5pm

Witch Trials exhibition (2) **TIP**

After purchasing a ticket, each visitor will receive the guidePORT™ guiding system, providing them with interesting information about the witch trials of the second half of the 17th century and the exhibition itself.

Kladská 1, Šumperk, Tel.: +420 583 213 721, +420 721 346 527, E-Mail: expozice@sumperk.cz,
www.sumperk.cz / Opening hours: June, September Mon–Sat 9am–3pm,
July, August Mon–Sat 9am–12pm, 1pm–5pm / 49°57'54.454"N, 16°58'19.105"E

Šumperk Museum of National Art and History **TIP**

The museum's permanent exhibits deal with the history and nature of the region. The museum was the first in the country to introduce the fully automated GuidePORT™ audio guide.

Kladská 1, Šumperk, Tel.: +420 583 213 721, +420 721 346 527, www.sumperk.cz / Opening
hours: June, September Mon–Sun 9am–3pm, July, August Mon–Sun 9am–12pm, 1pm–5pm /
49°57'54.454"N, 16°58'19.105"E



1

Vikýřovice Road Museum (3) **TIP**

The "Via est vita – The Road is Life" permanent exposition captivates visitors with its interesting presentation of the development of roads, from the oldest paths to up-to-date modern highways. Unique items on display include e.g. a wheel presser used to add iron rims to wooden wheels, road sleighs, period photographs and maps and a rare collection of service and corporate badges. The outdoor part of the museum features interesting road machinery (rollers, snowploughs, etc.) and bridges (e.g. from Moravičany).

Hraběšická 203, www.muzeumsilnic.cz, Tel.: +420 583 211 688 / Opening hours: Tue–Sat 10am–4pm /
49°58'2.194"N, 16°59'59.326"E

Bludov Spa **TIP**

Find new energy and relax by treating yourself to various procedures in the spa. Your body will grow younger thanks to the latest medical research in balneology, obesityology and therapeutic rehabilitation. The spa offers treatment covered by insurance companies, as well as programmes and stays for private patients.

Lázeňská 572, Tel.: +420 583 301 211, +420 602 302 554, www.lazne-bludov.cz / 49°56'23.363"N,
16°54'33.761"E

Town hall observation tower

free

Nám. Míru 1, Šumperk, Tel.: +420 583 388 610,
www.sumperk.cz / Opening hours: June,
September Mon–Sun 9am–3pm, July–
August Mon–Sun 9am–12pm, 1pm–5pm /
49°57'55.163"N, 16°58'13.639"E

Bratrušov Swimming Pool **TIP**

Swimming pool, water slide (90 m), playground,
rope climbing pyramid, refreshment.

Zemědělská 20, Tel.: +420 602 168 972,
+420 583 214 295, www.aquacentrum.net /
Opening hours: June Mon–Fri 1pm–19.00,
Sat–Sun 9am–19.00, July Mon–Sun
9am–19.00, August Mon–Sun 10am–19.00 /
49°58'23.615"N, 16°58'16.230"E

AQUAcentrum Šumperk **TIP**

Lidická 81, www.aquacentrum.net,
Tel.: +420 583 214 295 / Opening hours:
Mon, Wed 6.00–8am, 5pm–21.30, Tue, Thu, Fri
6.00–8am, 12pm–21.30, Sat 10am–21.30, Sun
10am–21.00 / 49°57'38.658"N, 16°59'25"E

Na Háji Observation Tower (4)

631 metres above sea level, height 29 m.
Tel.: +420 774 664 648, www.kctsumperk.cz /
Opening hours: March–April Sat, Sun
10am–4pm, May–June Sat, Sun 10am–5pm,
July–August Tue–Sun 10am–5pm, September
Sat, Sun 10am–5pm, October Sat, Sun 10am–
4pm / 49°58'13.292"N, 16°55'56.180"E

Rapotín – Open-air Farming Museum, Vintage Car Museum, Zoo **TIP**

Ideal tip for a family trip.
U Lávký 34, Rapotín
www.zemedelskyskanzen.svet-stranek.cz,
Tel.: +420 583 216 197, +420 603 870 921 /
Opening hours: April–October 9am–19.00 /
49°58'38.3"N, 17°0'19.9"E



4

Aero Club Šumperk

Sightseeing flights for the public.
Tel.: +420 583 212 067, +420 736 159 573,
www.aeroklub-sumperk.cz / 49°57'37.991"N,
17°1'3.990"E

Ruda nad Moravou swimming pool

Ruda nad Moravou 40, Tel.: +420 583 301 614,
+420 583 301 612, www.ruda.cz /
49°58'46.558"N, 16°52'48.530"E

Ranch Viktorie Šumperk

Bohdíkovská 70, Tel.: +420 777 114 422,
www.ranchviktorie.cz /
49°59'8.681"N, 16°56'17.639"E

BIO Farm Morava

Komňátka 14, Bohdíkov, Tel.: +420 583 246 078,
+420 602 100 913, www.farmamorava.cz /
50°1'1.823"N, 16°52'52.777"E



2



3

Events in 2013

Šumperk

June 1,
Šumperk Town Festival
Procession of knights, period fair, other
attractions
Tel: +420 583 388 610

June
Blues Aperitiv
Two-day Šumperk blues open-air festival,
Tel: +420 583 363 03

August 14–19,
International Folk Festival
Groups from around the world
Tel: +420 604 978 017
www.festivalsumperk.cz

September 7–8,
European heritage days in Šumperk
Tel: +420 583 388 610, www.sumperk.cz

Velké Losiny and surrounding area



Velké Losiny, Lázeňská ul. 25
+420 583 248 248
infolosiny@losiny.cz
www.losiny.cz



Kouty nad Desnou 1
Loučná nad Desnou
+420 585 438 100
+420 583 283 282
www.dlouhe-strane.cz

Velké Losiny and its surroundings are a region with numerous terrifying stories of the trials of the Inquisition held in the local chateau. There is also a unique paper mill which has been making paper with the same technology for over 400 years, and there are picturesque wooden churches dotted all over the region. There is a tourist train you can take to visit them, the Spa Express. Of course, you can also visit these attractive locations by yourself, on foot or by bike, following marked trails.

Velké Losiny Chateau (1) free

The chateau is dominated by an octagonal tower and decorated with arcades undulating along the three chateau wings in three rows above each other. A national cultural heritage, the chateau interiors illustrate the life noble families led in the 16th century. Located on the second floor is the hall of justice and a room in which the infamous witch trials were held in the 17th century. Later, they provided inspiration for many books and films.

Zámecká 268, Tel.: +420 583 248 380, www.losiny-zamek.cz / Opening hours: April, October Sat–Sun, public holidays 9am–12pm, 12.30pm–4pm, May–August Tue–Sun 8am–12pm, 12.30pm–5pm, September Tue–Sun 9am–12pm, 12.30pm–4pm / 50°1'23.6"N, 17°1'52.781"E

The Museum of Paper, Velké Losiny Handmade Paper Mill free, Sale

Paper has been continually produced here using traditional manufacturing processes for four hundred years. This exceptional technical monument contains exhibits related to the history of paper manufacturing here and a section of workshops where visitors can watch how paper is made. The facility includes a gift shop and a restaurant.

U papírny 9, Tel.: +420 583 248 433, www.rucnipapirna.cz / Opening hours: January–April, October–December Mon–Sun 9am–4pm, May, June, September Mon–Sun 9am–5pm, July–August Mon–Sun 9am–6.00pm / 50°1'47.321"N, 17°2'16.558"E

Velké Losiny Thermal Spa (2) -10% **TIP**

The recently opened Eliška spa hotel provides a wide array of high-quality services under a single roof. Indulge yourself in a rich selection of spa treatments. There is also a café with a summer terrace. The visitors will appreciate the indoor and outdoor thermal pools with their sulphurous water, with a temperature of 36.8 degrees Celsius.

Lázeňská 323, Tel.: +420 583 394 111, www.lazne-losiny.cz, www.royalspa.cz, www.diana-losiny.cz / 50°1'58.418"N, 17°2'18.988"E

Thermal swimming pool in the spa park

Opening hours: May, June, September Tue–Sun 10.30–6.00pm / July–August Mon–Sun 09.00–19.00

Wheelchair-friendly routes in Velké Losiny

www.infosumperk.cz

Kouty Culture and Sports Grounds -10% **TIP**

In the resort at Kouty, you will find a Bike Park with new routes of various lengths and degrees of difficulty. A six-seater ropeway will take you and your bicycles up to the Bear Mountain, where all the hiking and cycling routes begin. From here, you can also go on a ride around the upper reservoir of the Dlouhé Stráně Hydro Power Plant, either on a scooter or roller blades. In the Kouty resort, you can play discgolf or try Nordic Walking. Those who are interested may use our car park and the area designated for camping in caravans.

Kouty nad Desnou 30, Loučná nad Desnou, Tel.: +420 585 283 282, +420 602 322 244, www.kouty.cz / 50°6'1.208"N, 17°6'56.310"E

Dlouhé Stráně (3) -10% **TIP** pumped-storage hydroelectric power plant

The power plant boasts three superlatives: the largest reversible water turbine in Europe, it is the power plant with the greatest difference in elevation in the Czech Republic and with the highest installed capacity among Czech hydro power plants. In 2005 it was ranked among the seven greatest wonders of the Czech Republic, thus qualifying as one of the most important Czech sights, together with Karlštejn Castle, Prague Castle or Hluboká Castle. Recently it won the first annual poll of the seven wonders of the Olomouc region.

Information Centre – Hella sport store, Kouty nad Desnou 1, Tel.: +420 583 283 282, tours start here, sale of booked tickets, www.dlouhe-strane.cz, www.cez.cz / 50°5'10.999"N, 17°10'45.999"E

Small wooden churches

St. Martin's Church in Žárová (4)

An important monument of rustic Renaissance architecture dating back to 1610–1611.

Tel.: +420 583 295 129 / 50°3'14.776"N, 17°0'53.801"E

St. Michael's Church in Maršíkov

Built in 1609, the oblong timber sacral construction of the originally Lutheran church is an important example of Late Renaissance rustic architecture.

Tel.: +420 583 248 546 / 50°2'10.173"N, 17°4'18.463"E

St. John of Nepomuk's Chapel in Klepáčov

Timber construction with an entrance portal and a hipped roof documents the wooden architecture of the 17th century.

50°0'39.5"N, 17°8'42.78"E

Červenohorské Saddle

Situated on the ridge of the Hrubý Jeseník Mountain Range, Červenohorské sedlo is the starting point for important hiking and bike trails in the direction of the Švýčárna Chalet – Praděd (1,492 metres above sea level), and in the opposite direction to the oldest nature reservation in Moravia, Šerák – Keprník. Červenohorské sedlo is one of the most popular ski resorts.

www.visitjeseniky.com, www.skiklub-su.cz / 50°7'33.613"N, 17°9'5.604"E

Praděd

Praděd is the highest mountain of the Hrubý Jeseník Mountains and in the whole of Moravia. Standing in a National Nature Reserve of the same name, its natural altitude of 1,492 metres above sea level is extended by a broadcasting tower measuring 146.5 metres high. The tower contains a pleasant restaurant and the observation deck provides breathtaking views. Regular shuttle transport connects Hvězda and Ovčárna

www.visitjeseniky.com / 50°4'57.547"N, 17°13'51.202"E

SKI Areal Kareš – summer attractions -30%

Mountain mini-karts, summer skiing, mountain scooters

Tel.: +420 733 182 227, www.skarealkares.cz / 50°5'42.378"N, 17°6'2.066"E

Adrenaline contests and games – KMsport -10%

Adrenaline sports and attractions of all kinds, party games, cultural programmes for children and adults.

Kocánov 76, Tel.: +420 604 608 489, www.kmsport.cz



Events in 2013

Velké Losiny

May 10–12, Zpěvák

Competition of children folk singers
Tel.: +420 234 621 218, www.fos.cz

June 21–23, Feast of St. John

Traditional feast of the town
Tel.: +420 583 248 422, +420 583 248 361,
www.losiny.cz

July–August Summer of Culture

Theatre and music festival at the Velké Losiny Chateau
Tel.: +420 583 212 293, www.scarongroup.cz

Švýčárna Tourist Chalet

Kouty nad Desnou 74, Tel.: +420 554 779 018, +420 737 249 573, www.svyccama.cz / 50°6'6.003"N, 17°12'50.949"E

Vřesová studánka

www.visitjeseniky.com / 50°8'41.723"N, 17°7'57.170"E

Watchtower and TV transmitter at Praděd **TIP**

Tel.: +420 604 136 577 /
Öffnungszeiten: täglich 9.00–17.00

Jeseníky Eco Park

The Park is located on the edge of a forest near the Hotel Diana. Nature lovers can visit the game preserve and feed the forest animals.

Žárovská 618, Tel.: +420 583 248 050
www.diana-losiny.cz / Opening hours: Mon–Fri 9am, 10.30 / 50°2'12.325"N, 17°0'58.989"E





Zábřeh Region



Božeňov



Zábřeh, Čs. armády 835/1
+420 583 411 653
info@ic.zabreh.cz
tourism.zabreh.cz



Štítý, nám. Míru 55
+420 583 440 109
info@stity.cz
www.stity.cz



Nature enthusiasts will fall in love with the Zábřeh region as it is ideal for hiking and cycling, as well as learning about the locality on horseback. You can set out to the ruins of the castle at Brničko or to Aleš Valenta's Acrobat Park or visit the Zábřeh Museum to see the exhibition of the Zábřeh native, adventurer and traveller Jan Eskymo Welzl.

Zábřeh

An exhibit in the town museum is dedicated to the best-known native of Zábřeh, J. E. Welzl (statue near the station). Other points of interest include a fountain, the Plague Column, St. Bartholomew's Church with the parish museum, and the ancient town hall with the Tunklův dvorec Gallery. Go-karts, off-road four-wheelers, and an outdoor swimming pool are available for active relaxation. The town is the starting point for many interesting trips into the surrounding area. A new educational trail will take you around the Moravian Sázava valley.
tourism.zabreh.cz, 49°52'57.369"N, 16°52'20.017"E

Skalička Chateau

The chateau is on a knoll rising above the railway station. You can get there by climbing a paved path leading through the village of Rudolfovo or simply drive from Zábřeh in the direction of Jestřebí. The chateau lies in the middle of a small park in an originally separate village of the same name, Skalička, which was incorporated into Zábřeh in the mid-20th century. During the season the chateau offers regular tours and holds concerts, forums, exhibitions, and social events.
Skalička 15, Zábřeh, Tel.: +420 583 411 288, www.zamek-skalička.cz / Opening hours: see the website / 49°52'11"N, 16°52'52.059"E



1

Božeňov Rope Climbing Centre (2) / -10%

The Rope Climbing Centre is located in the resort of Božeňov. The centre has 12 obstacles at a height of 8 metres above the ground, with a 40-metre-long ropeway at the end. An 8-metre-high climbing tower with 14 routes, the possibility of climbing with an instructor, climbing equipment rental, night lighting. Archery, American blowguns, jumping shoes and a bungee trampoline. A playground for the youngest children with 14 features, including a wooden play castle or the legendary boat swings. Bike rental.

Dolní Bušínov 146, Zábřeh, Tel.: +420 583 411 299, +420 733 530 757, www.bozenov.cz /

Opening hours: June, September: Sat, Sun, July, August: Mon – Sun 10am – 6.00pm, by telephone arrangement at any time / 49°49'57.996"N, 16°49'34.515"E

Acrobat Park Štítý (3) **TIP**

The park was co-founded by the Olympic Champion in Acrobatic Skiing, Aleš Valenta, and now it holds international races. Here you can do acrobatic ski jumping or snowboard jumps into water, and many other adrenaline activities are available for the public. Anyone can try the jumps under the supervision of trainers. The centre offers other services; including accommodation, equipment rental, and also interesting events you would not be able to see anywhere else!

U Parku 349, Tel.: +420 583 440 117, +420 737 189 351, www.acrobatpark.com / 49°57'41.596"N, 16°45'34.433"E



3

Zábřeh swimming pool (4)

Swimming pool, steam room, whirlpool.

Oborník 39, www.zabreh-bazen.cz,
Tel.: +420 583 550 361 / 49°52'36.380"N,
16°52'2.697"E

Zábřeh tennis courts and indoor tennis hall

Sokolská 13, Tel.: +420 724 081 012,
+420 583 416 762 / 49°52'60"N, 16°51'59"E

Fit Club Relax Zábřeh

Severovýchod 6, www.fitclubrelax.cz,
Tel.: +420 583 411 286 /
49°53'5.975"N, 16°52'50.104"E

The Renaissance Fortress of Kryštof Huberck the Elder of Belnsdorf in Nemile

The fortress represents the type of dwelling typical of the gentry in the 16th/17th centuries. Visitors can see the Black Kitchens, the Chapel and other rooms.

Feste Nemile 54, Zábřeh,
www.tvrz-nemile.estranky.cz, Tel.: 777 657 779 /
49°52'28.37"N, 16°50'40.46"E

Zábřeh salt cave and wellness studio

Křivkovského 2, Tel.: +420 583 416 381,
www.talorm.cz /
49°52'42.459"N, 16°52'44.860"E



4



Museum Zábřeh (1) **TIP**

 /  free, Sale
Žitkova 1, www.muzeum-sumperk.cz,
Tel.: +420 583 413 646 / Opening hours:
Tue–Sat 9am–12pm, 1pm–4pm /
49°52'59.776"N, 16°52'20.347"E

Parish Museum in Zábřeh

Farní 10, Zábřeh, <http://rkfzabreh.rps.cz>,
Tel.: + 420 731 044 840 (guided tours
by arrangement) / 49°52'56.468"N,
16°52'23.924"E

Galerie Tunklův dvorec

Masarykovo náměstí 1, Zábřeh,
Tel.: +420 583 411 177, +420 583 412 022
(guided tours by arrangement) /
49°52'57.227"N, 16°52'14.268"

Zábřeh off-road four-wheelers

Olomoucká 23 (next to the Shell filling station),
Tel.: +420 602 730 212,
www.quad.estranky.cz

Events in 2013

Zábřeh, tourism.zabreh.cz
June 29, 7 and a Half Fest
Multi-genre festival, Tel: +420 583 415 400

Štítý, www.stity.cz
June 29, 31st Gathering at the Bohemia-
Moravia Border
Inhabitants of the Olomouc and Pardubice
regions and Polish guests meet at the
imaginary Bohemia-Moravia border,
July, Freestyle Czech Open 2013
Acrobatic Skiing World Cup
Tel: +420 583 440 117, www.acrobatpark.com
August 18, Štětecká pout (Štítý Fair)
Tel.: +420 583 440 109, www.stity.cz



Staré Město and Hanušovice Regions



Králícký Sněžník



Staré Město, náměstí Osvobození 166,
+420 583 239 134
tic.staremesto@tiscali.cz
www.staremesto.info

Hanušovice, Hlavní 137
+420 583 215 611
ic@ichanusovice.cz
www.ichanusovice.cz

Stroking an elephant does not have to be dangerous. It certainly isn't with the one made of stone and standing on the top of Králícký Sněžník, a mountain that dominates the landscape. The climb will not be effortless, but there's a reward at the end: a breathtaking vista in all directions. Or would you prefer to visit Poland? In that case, plan an easy trip to Kladské sedlo!

Staré Město pod Sněžníkem (1)

The historical centre of the town is dominated by the town hall from the beginning of the 17th century, a Baroque sculpture, and St. Anna's Church. The area surrounding the town is ideal for walks, challenging hikes and biking trips, and in general is tempting for those seeking active relaxation. The local riding schools offer both tourist horseback riding and riding training. On the edge of the town there are also tennis courts. The rich past of Staré Město is documented in the Military Museum and reflected in the border fortification system built here in 1937–1938. It is one of the most sophisticated fortification systems in Europe.

www.mu-staremesto.cz / 50°9'42.249"N, 16°56'50.428"E

Staré Město Military Museum

The museum is situated in the former army barracks, in Building No. 11. Border fortification system.

**Barracks-Building No. 11, Staré Město pod Sněžníkem, www.opevneni-stm.cz,
Tel.: +420 732 530 774 / Opening hours: May–October Sat 9am–5pm, Sun 9am–3pm
(Pause 12pm–1pm) / 50°9'14.287"N, 16°57'3.569"E**

Border fortification system (3) TIP

The ruins of border fortifications bring back memories of 1938. Among the many forts to stay intact are the two-wing structure S-34 "SLOPE" and the S-33 infantry cabin. The forts can be reached from the square in Staré Město pod Sněžníkem, when you set out towards Branná. After 200m turn left at a cross, and after another 2km along a meadow take the old bunker path up the hill.

**Hanušovická 351, Staré Město pod Sněžníkem, Tel.: +420 732 530 774, +420 605 567 548,
www.opevneni-stm.cz / 50°9'15.061"N, 16°56'56.041"E**



1

Brewing Museum, Holba Brewery in Hanušovice (2) free

Beer has been made in the gorgeous environs of the Jeseníky Mountains since 1874. Holba Brewery tours – for groups only – are offered on weekdays, from Monday to Thursday (9am–2pm). Individuals can join groups for the tour. Tours must be booked by phone at least two weeks in advance.

**Pivovarská 265, www.pivovarskemuzeum.cz, Tel.: +420 583 284 699 / Opening hours:
Mon–Fri 10am–4pm, Sat 10am–5pm / 50°4'13"N, 16°55'41"E**

Králícký Sněžník

The 1,695-hectare national nature reserve Králícký Sněžník, where the largest Moravian river, the Morava, has its source, is located in the central part of a mountain range bearing the same name. The observation tower that used to stand on the top of Králícký Sněžník is no longer there but the spot still offers a splendid view of the Hrubý Jeseník, Orlické Mountains, Krkonoše, and the Polish Owl Mountains. Under the peak, not far from where the Morava River has its source, you can see remnants of the once-famous Lichtenstein Chalet and nearby a statue of a baby elephant – the symbol of Králícký Sněžník. You can reach the peak by following e.g. the "Králícký Sněžník" educational trail with its 15 stops, which starts at the car park in the northern part of the village of Dolní Morava. The trail is 14 km long and the drop is 685 metres.

www.staremesto.info, Tel.: +420 583 239 134 / 50°12'26.523"N, 16°50'49.868"E

Kraličák resort – Hynčice pod Sušinou, Stříbrnice

  -10%

Mountain go-karts, mountain scooters, mountainboards, grass skiing..

**Tel.: +420 603 150 184, www.skareakralicak.cz /
Hynčice p. S. 50°9'34"N, 16°54'3"E / Stříbrnice
50°10'38"N, 16°54'29"E**

Staré Město pod Sněžníkem Sports Centre (4)

**Sportovní ul., Tel.: +420 583 239 213,
www.staremesto.info /
50°10'0.346"N, 16°56'34.769"E**



4



3



5

Scooter rental in Hanušovice

**Potůček 449, Hanušovice, Tel.: +420 583 231 025,
www.kolobka.cz / Opening hours: Mon–Sat
8am–2pm / 50°4'41.211"N, 16°57'32.833"E**

Dolní Morava Relax & Sports Resort (5)

The resort is suitable for doing summer and winter sports alike. In addition to two four-seater ropeways, you can try the rope climbing park, the bobsleigh track, or an adventure tower with a climbing wall and other adrenaline attractions. The Wellness Hotel Vista**** is a part of the resort.

**Dolní Morava, Tel.: +420 602 378 150,
www.dolnimorava.cz / 50°9'14.194"N,
16°48'45.831"E**



2



3

Events in 2013

Staré Město pod Sněžníkem

July 13, Organic food Festival, organic food tastings, PRO-BIO s.r.o.

Tel.: +420 583 301 952, www.probio.cz

July, Anenská Fair

Music, dancing, fair, and pilgrimage mass
Tel.: +420 583 239 267, +420 725 502 753,
www.staremesto.info

September 7, To the Morava Spring

Hike to Králícký Sněžník
www.kpramenimoravy.wz.cz

Hanušovice

September, Beer Festival

Excursion to the brewery, music and entertainment programme, www.holba.cz



Ramzovské Saddle



Keprník



Ramzová – roadside car park
+420 739 386 555,
www.jesenicko.eu
July–August:
daily 9.00–12.00, 12.30–18.00

Ramzovské Saddle has something for everyone: romantic walks in the countryside or hiking along the ridge of the Hrubý Jeseník mountains, challenging uphill bike trails, or the unforgettable experience of riding the chairlift to Šerák or riding the bobsleigh track. And for relaxation? Visit the Kolštejn Relax Centre in Branná, with the Vital World wellness complex offering a range of unconventional treatments!

Šerák – Keprník (1) **TIP**

The national nature preserve Šerák – Keprník is the oldest in Moravia. It conceals a number of rare plants, trees, and several large highland peat bogs. At Keprník (1,423 metres above sea level) there are Alpine meadows with remarkable flora. From the Šerák Mountain (1,351 metres above sea level; also accessible by chairlift) and Keprník Mountain you have a view of the entire Králický Sněžník massif, the Jeseníky peaks, and the Rychlebské Mountains. Many hiking trails run through here. The trail called "S Kopnickem na výlet keprnickými horami" is also suitable for children.

www.jeseniky-tourism.cz, www.jeseniky.ochranaprirody.cz / 50°11'11.821"N, 17°6'23.831"E

By Funicular to Šerák (2, 4)

The funicular in Ramzová is the main means of transport to the northern ridge of the Jeseníky Mountains, both in summer and winter. The lower section from Ramzová to Čerňava is 1,459 m long and served by a four-seat chair lift, while the upper section between Čerňava and Šerák is 1,810 m long, with two-seat chairs. The funicular takes visitors to the Šerák Mountain, from where it is possible to hike or cross-country ski along the main ridge route of the Jeseníky over Keprník, the Vřesová Well, the Červenohorské Saddle, the Švýčárna chalet, Praděd, Ovcárna, Vysoká hole Mountain, Kamzičník, Ztracené Kameny and the Jelení Well up to the Skřítek Saddle. It saves you time and energy by sparing you over 600 metres of vertical elevation from the Ramzová Saddle to the main ridge. The Jiřího chalet below the Šerák peak welcomes tourists.

Ramzová 339, Ostružná, Tel.: +420 583 230 070, +420 583 230 077, www.bonera.cz / 50°11'29.063"N, 17°4'8.834"E

Branná (6)

On a rocky cliff, high above the valley of the Branná stream, are located the remnants of the Kolštejnský Castle, which used to guard the ancient road from Moravia to Silesia. In the town of Branná there are ruins of the Gothic Kolštejn Castle with a stunning view of the surrounding area, and adjacent a half-ruin of a Renaissance chateau of the same name. It is one of the highest situated ruins in the Czech Republic. Lovers of military forts will be delighted by a visit to the Museum of the Pre-war Czechoslovak Fortifications.

Ruin – Kolštejn Castle and Chateau

Tel.: +420 732 856 703, www.obecbranna.cz / Opening hours: April–June, September–October Sat–Sun 9am–5pm, July–August Tue–Sun 9am–5pm (12pm–12.45pm Pause). Other times and night tours with lanterns are available upon reservation. / 50°9'1.24"N, 17°0'43.261"E

Kolštejn relaxation centre (3) -10% **TIP**

The relaxation centre is a magical place for a wellness weekend and a stay in the Jeseníky. You will have available for you 6 saunas, a steam spa, salt and herbal therapy, baths, massage, tropical rain and the Fitodar herbal tub.

Branná 60, Tel.: +420 583 286 421, www.relaxkolstejn.cz / Opening hours: Mon–Thu 10am–22.00, Fri and Sat 10am–23.00, Sun 10.00–21.00 / 50°9'8.48"N, 17°0'36.86"E

The Chapel of St. Roch in Ramzová

It is a Neo-Gothic chapel built in 1897.
www.visitjeseniky.com / 50°11'46.136"N, 17°3'51.968"E

Grass minicars in Františkov

Františkov 124, Jindřichov, Tel.: +420 777 639 629, www.x-park.cz / Sommer: Fri 3pm–20.00, Sat 11am–20.00, Sun 11am–3pm / 50°7'59.889"N, 17°0'50.359"E



4



1



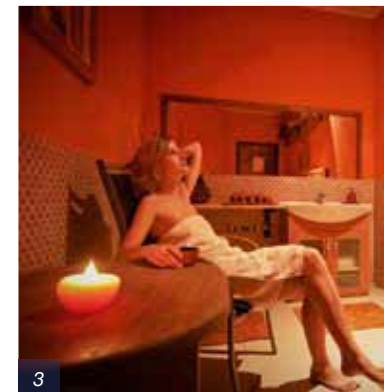
2



5



6



3

Branná Museum of Pre-war Czechoslovak Fortifications

 free

This structure of light fortifications is located near the hamlet of Splav, and you can get there by following the hiking and bike trails from Branná in the direction of Ostružná, or the "Pasák" educational trail. A partly equipped reinforced infantry bunker and the StM-S52 heavy fortifications are also open to the public.

Tel.: +420 773 273 007, www.shd.vz.cz / Open by appointment only.

Petríkov Summer Bobsled Run (5) free

Ostružná-Petríkov 82, Tel.: +420 583 230 098, www.kaste.cz / Opening hours: May, October Fri–Sun 10am–6.00pm, June–August daily 10am–6.00pm / 50°12'5.659"N, 17°2'42.584"E

Mountain go-karts Haltmar–Ramzová–Ramzová

  -10%

Ramzová 36, Ostružná, Tel.: +420 603 485 619, www.haltmar.cz / 50°11'28.861"N, 17°3'53.770"E

Ramzová tennis courts

Ramzová, Branná, Tel.: +420 583 230 078, www.ramzova.cz / 50°11'36.262"N, 17°3'47.257"E

Events in 2013

September 7–8,
The Kolštejn Circuit
Motorcycle Races
Tel: +420 583 230 189
www.kolstejnkyokruh.org



Jeseník Region



Priessnitz Health Spa



Jeseník, Palackého 2/1341
+420 584 498 155 Sale
+420 776 773 503
ic@jesenicko.eu
www.jesenik.org

Jeseník, Priessnitzova 111
+420 584 491 470 Sale
infocentrum@priessnitz.cz
www.priessnitz.cz

Bělá pod Pradědem, Domašov 4
+420 584 452 834
mic@bela.cz
www.bela.cz

Lipová-lázně 476
+420 584 421 209
muzeum@ic-lipova.cz
www.ic-lipova.cz



1

The Jeseník region is a place renowned for its spa, as well as its exceptionally clean air which invites you to take a walk. During such walks, there are landmarks and natural beauties to discover that have stood there for many years, but also a few things that are quite new, for example the unique patterns – the cosmograms. On your trips around the town of Jeseník, you will certainly welcome several highly original places to rest which are made of wood, where you can take a break for a while or have a picnic. Or you may choose to do almost nothing at all and use the services of our wellness experts who provide various spa treatments to make your body feel good.

Jeseník

The town has a peaceful atmosphere, is rich in history, and provides an ideal starting point for many delightful trips. If you decide to go, you will discover monuments, rock formations, and observation rocks – e.g. the Čertovy kameny rock, commemorative plaques, crystal clear streams and splendid scenery. In clear weather, the Zlatý chlum observation tower provides breathtaking views. When in Jeseník, history lovers should not miss the mysterious Water Fort, which dates back to the 13th century and now houses a museum. And do not forget to taste the well-known Jeseník Priessnitz herbal liqueur.

www.jesenik.org / 50°13'45.736"N, 17°12'16.716"E

Priessnitz Health Spa (3) -10%, Sale

One of the best-known and most visited spas in Moravia is situated in the picturesque landscape above the town of Jeseník, at an average elevation of 620 metres above sea level. The treatment is based on the favourable climatic conditions and the healing power of the local springs (there are about 80 of those), discovered by the legendary "water doctor" Vincenz Priessnitz; a museum dedicated to this man can be found in the house where he was born. The spa offers high-quality accommodation and a wide range of healing and relaxation treatments. After extensive reconstruction, the new and modern spa treatment facilities in the Priessnitz spa house were opened to the public in 2010. The combination of Priessnitz's traditional water-healing method and modern wellness and beauty programmes is very pleasant. Short-term stays designed to regenerate your organism are also available. There is a swimming pool with counter-currents, a waterfall and a jacuzzi, a sauna world (aromatic sauna, Finnish sauna, steam sauna, a cooling pool, the Priessnitz walk, relaxation area, whirlpool), an outdoor spa park, a gym, tennis courts, miniature golf and other facilities. Visitors can discover the surrounding area by following the Vincenz Priessnitz educational trail.

Priessnitzova 12/299, Tel.: +420 584 491 111, www.priessnitz.cz / 50°14'28.254"N, 17°11'22.457"E

Vincenz Priessnitz Birthplace (1) free **TIP**

Lázně Jeseník 175, Tel.: +420 584 411 633, www.muzeum.jesenik.net / Opening hours: Tue–Fri 12.30pm–5pm, Sat–Sun 10am–12pm, 12.30pm–5pm

Jeseník Museum of National Art and History free

Among the most important historical monuments in Jeseník is the Water Fortress from the 13th century, which today houses the local Regional Museum. This example of advanced medieval architecture attracts visitors because of its engaging displays, devoted, for example, to the history of the Jeseník Region, and in the reconstructed area you can visit an exhibition mapping the local witch trials of the 17th century.

Zámecké náměstí 120/1, Jeseník, www.muzeum.jesenik.net, Tel.: +420 584 411 633 / September–May Tue–Sun 9am–12pm, 1pm–4.30pm, June–August Tue–Sun 9am–12pm, 1pm–5pm / 50°23'33.894"N, 17°0'20.468"E

Na Pomezí Caves (2) -18-40%

The Na Pomezí Caves are the largest system of caves in the Czech Republic created by dissolving marble. A large part of them consists of "living" caves – new stalactites continue to form and older stalactite formations are originating. The route, which is more than 0.5 km long, includes e.g. the Ice and White Domes, the Roman Baths, the Royal Chimney, etc. There is a car park for visitors directly in front of the entrance.

Lipová-lázně, Tel.: +420 584 421 284, www.caves.cz / Opening hours: April–June, October Tue–Sun 9am–4pm, July–August Mon–Sun 9am–5pm, September Tue–Sun 9am–5pm / 50°14'45.452"N, 17°8'18.379"E

Adrenalin Park Česká Ves -10-30%

A giant swing, off-road four-wheelers, paintball, archery, a climbing wall or horseback riding, an adrenaline tower, bungee trampoline.

Polská 9, Česká Ves, Tel.: +420 731 543 237, www.adrenalin-park.cz / Opening hours: April tel. arrangement, May Mon–Fri tel. arrangement, Sat–Sun 10am–5pm, June daily 10am–5pm, July–August daily 10am–19.00, September Mon–Fri tel. arrangement, Sat–Sun 10am–4pm, October Mon–Fri tel. arrangement, Sat–Sun 10am–4pm / 50°15'53.844"N, 17°14'25.977"E

Dolní Lipová Spa -10%, Sale

Situated in the unique climate of the Jeseník Mts. (within 6 km from the town of Jeseník), the spa has a long tradition in the treatment of metabolic and skin disorders, obesity, diseases of the thyroid and disorders of the metabolism. The spa offers numerous treatment, reconditioning, and relaxation programmes. It also features a rich variety of sports and leisure activities.

Lázeňská 248, Lipová-lázně, Tel.: +420 584 421 351, www.lazne.cz / 50°13'43.239"N, 17°8'48.687"E

Horní Lipová Forest Bar (4) **TIP**

The Forest Bar is located on the way from Horní Lipová to Smrk, in the valley of the Vápenná Stream. It is a unique spot in the middle of the woods, where the beverages are cooled in a riverbed full of ice-cold water. For just a few crowns you can have a coffee, tea or confectionery while wandering around the Jeseník countryside.

Horní Lipová 131, Lipová-lázně, Tel.: +420 584 421 209, www.lesnibar.cz / 50°13'27.95"N, 17°3'23.278"E, 50°13'29.439"N, 17°2'42.963"E, 50°14'10.497"N, 17°3'48.938"E

Zlatý chlum Observation Tower

875 metres above sea level, height 26m, 145 steps
Tel.: +420 603 509 943, www.zlatychlum.cz / Opening hours: April–October 10am–6.00pm / 50°14'16.969"N, 17°14'15.069"E

Křížový vrch

Chapel, view point, restaurant 671 metres above sea level.
Za pilou 6, Jeseník, Tel.: +420 584 402 063, www.krizovyvrch.cz / 50°13'33.528"N, 17°13'29.899"E

Aqua Centrum Česká Ves

www.krtybazen.jesenicko.com, Tel.: +420 584 428 186 / 50°15'25.898"N, 17°13'40.123"E

Čertovy kameny

Mountain climbing, starting point for Zlatý Chlum.

Johann Schroth Museum

free
Multi-purpose centre, Lipová-lázně 476, Tel.: +420 584 421 209, www.ic-lipova.cz / Opening hours: Tue–Fri 1pm–5pm / 50°13'40.249"N, 17°7'50.884"E

Silesian Semmering Railway Museum

Horní Lipová Railway Station, Lipová-lázně 191, Tel.: +420 972 745 627, www.lipova-lazne.cz / 50°13'29.111"N, 17°5'0.056"E

Česká Ves Antique Car Museum

Tel.: +420 584 428 218, +420 608 502 601, www.veteranklub.cz / Opening hours: May, September Sun 11am–4.30pm, June–August Mon–Sun 11am–5pm



2



3



4

Events in 2013

Jeseník, www.mkzjes.cz
May 17–19, Opening of the 2013 International tourism and spa season
Tel: +420 777 823 611, www.mkzjes.cz
June 21, Concert for Jeseník – This year this popular event will be held for the 6th time
July 13, Jeseník Nugget – Multi-genre open-air festival, Tel: +420 777 823 611, www.mkzjes.cz
August 3, Jeseník Astur Center
Jeseník se baví 2013, programmes for children, fair, Tel: +420 774 801 971, www.mkzjes.cz

Horní Lipová
May, Launch of the Spa Season – at the Kovárna Guesthouse, Tel: +420 584 421 613, www.penzionkovarna.cz
September, Emperor Joseph II in Horní Lipová
www.penzionkovarna.cz, Tel: +420 737 283 770

Zlaté Hory Region



Gold Ore Mill



Zlaté Hory, Bezručova 144
+420 584 425 397
mic@zlatehory.cz
www.zlatehory.cz



Mikulovice, Hlavní 214
+420 584 429 381
knihovna@mikulovice.cz
www.mikulovice.cz

In a long-gone age, gold really was mined here, as the name of the place suggests. Today, the memories of this era live on in the Zlatorudné mlýny mills upon the Olešnice river, where anyone may try their luck and pan for some gold. For other interesting experiences, visit the central town of the region, Zlaté Hory, or the Golden Mountain, itself. In the local museum, you can see a model of a mine tunnel and a mineral exhibit. The region lies in a picturesque landscape with many unique features, reachable by educational trails. Take a walk along the Javorné Valley Educational Trail (Rejvíz).

Zlaté Hory – Mystery of gold

The town of Zlaté Hory boasts a town heritage zone featuring a number of Renaissance and Baroque houses and sacred buildings. Important sites include the parish church of the Assumption of the Virgin Mary, the hospital church of St. Cross, the Chapel of St. Roch, and the ruins of the Edelštejn, Leuchtenštejn, and Koblštejn castles. The town museum will show and tell you all about the history of gold mining in this location, as well as what a mining school looked like.

www.zlatehory.cz / 50°15'49.676"N, 17°23'45.663"E

Gold Ore Mill Open-air mining museum



TIP

A trail explaining the mining process runs through Údolí ztracených štol (the Valley of Lost Tunnels) to replicas of medieval mining mills. A cabin with a mill for crushing gold ore and a gold ore mill powered by water wheels that extract power from the original canal are operated on the site. You can try gold panning for yourself here!

Údolí ztracených štol, Zlaté Hory-Ondřejovice, Tel.: +420 721 930 684,
+420 584 425 397, www.zlatehory.cz / Opening hours: May–August Mon–Sun 10am–5pm,
September–October Tue–Sun 10am–4pm



1

Pilgrimage Place of our Lady of Perpetual Help (1)

The pilgrimage site dates back to the Swedish times. It is closely connected with a legend about a painting of Mary to which miraculous powers are ascribed. The location is the annual destination of crowds of pilgrims.

Tel.: +420 584 425 916, www.mariahlif.hyperlink.cz / 50°13'30.769"N, 17°23'41.268"E

Biskupská kupa Observation Tower (3) -50%

The observation tower at Biskupská kupa is located on the Polish border and it is the oldest observation tower in the Jeseník region. Marked hiking trails coming from all directions meet here. Numerous interesting events are held at the observation tower throughout the year.

Tel.: +420 603 342 011, www.rozhlednabiskupskakupa.cz / Opening hours: May–October Mon–Sun 9am–6.00pm, during favourable weather from sunrise to sunset. Visits at other times can be booked / 50°15'24.459"N, 17°25'43.217"E

Rejvíz (4) **TIP**

Rejvíz is one of the most beautiful villages in the Jeseníky. A guesthouse of the same name, famous for carved chairs with portraits of the inhabitants of Rejvíz, is the starting point for an educational trail leading to the Moss Lake. The 3-km-long trail consisting of a wooden path that protects this national nature reserve takes visitors up to the peat bog, which was formed 6-7 thousand years ago. At Rejvíz you can visit also a rediscovered pilgrimage site – the Lourdes Cave.

Tel.: +420 606 418 460, www.zlatehory.cz, www.rejviz.info / Opening hours: May–November 8am–6.00pm / 50°13'33.039"N, 17°17'19.172"E

Na Špičáku Caves (2) -25-50%

One of the oldest documented caves in Central Europe, with written records dating back to 1430. The tour of the caves is 220 metres long and accessible for the disabled. The astonishing sights to be seen in the cave include the marble sides of the Heart Corridor, where an engraved tournament shield may be found, which is dated 1519.

Tel.: +420 584 423 129, +420 602 295 562, www.caves.cz / Opening hours: April–June, September–October Tue–Sun 9am–4pm, July–August Mon–Sun 9am–5pm / 50°17'0.539"N, 17°14'58.998"E

Town Museum Zlaté Hory



nám. Svobody 94, www.zlatehory.cz,
Tel.: +420 584 425 329. May–June,
September–October Tue–Fri 9am–12pm,
1pm–4pm, Sat 9am–1pm, July–August Mon–Fri
9am–12pm, 1pm–5pm,
Sat–Sun 10am–4pm /
50°15'46.311"N, 17°23'45.963"E



4

Weaving exhibition in Rejvíz

Rejvíz 12, Tel.: +420 603 249 551, www.kpzh.cz /
50°13'42.427"N, 17°18'34.474"E

Sanatorium Edel

Guided tour of the underground tunnel, speleotherapy (the sanatorium is accessible by car, within approximately 3 km from Zlaté Hory), May–October: Sun 10.30am–1pm.

Lázeňská 491, Zlaté Hory,
Tel.: +420 584 425 327,
www.speleoterapie.cz / Sunday 10.30–1pm
(May–October) /
50°15'7.715"N, 17°23'27.088"E

Ski Center Příčná

A new four-seat chairlift fantastic in winter as well as in summer.

Zlaté Hory 828, Tel.: +420 584 453 650,
www.skipricna.cz /
50°14'46.391"N, 17°23'28.546"E

Sports and recreation area

BOHEMA Zlaté Hory

A new four-seat chairlift fantastic in winter as well as in summer.

Zlaté Hory 710, www.bohemaland.cz,
Tel.: +420 555 112 427 / 50°14'45.776"N,
17°23'31.646"E



2



3

Events in 2013

Zlaté Hory, www.zlatehory.cz
April 30, Burning of Witches Launch of the tourist season, Tel.: +420 584 425 397
May 11, Tour of the Beauties of the Zlaté Hory Region, tourist walk of the Czech Tourist Club Tel.: +420 731 781 290
August, Zlatá hoblina, open-air woodcarving festival, Tel.: +420 584 425 327
August, The Mayor's Golden Pan Competition traditional gold panning competition for men, women and children, Tel.: +420 584 425 397

Wallfahrtsort Maria Hilf
August 10, Main Pilgrimage
September 21, Pilgrimage of Three Nations



Javorník and Žulová Regions



Račí Valley



Javorník, Nádražní 160
+420 584 440 688
info@mksjavornik.cz
www.mestojavornik.cz
www.kulturnidumjavornik.cz



Vidnava, Radniční ulice 84
+420 588 517 237
info centrum@vidnava.cz
www.vidnava.cz

Žulová, Josefské náměstí 1
+420 584 437 151
mkzulova@jes.cz
www.zulovsko.cz

Rychlebské stezky, Černá Voda 51
+420 739 710 494
eva.tydl@rychlebskestezky.cz
Opening hours: May–October:
daily (Hire of all-terrain bikes.)
www.rychlebskestezky.cz

The areas around the Rychlebské Mountains are full of beauty. Some of it can be found along the new Latzel Trail. To experience the beauty of Žulová, walk to the top of the Boží Mountain (525 metres) by the old Way of the Cross, or around the Borový vrch hill. Or see the unique apothecary's in Vidnava or the exhibition of the Stonemason's Museum in Žulová! Don't forget to visit the Jánský vrch Chateau with its numerous interesting features, such as the surviving gas lighting of its interiors and courtyards.

Javorník

The ancient seat of the bishops of Wrocław, the Jánský vrch Chateau is the most beautiful spot of the town of Javorník. Apart from having exquisite interiors it also holds the largest Czech collection of pipes and smoking accessories, amounting to roughly 1,200 exhibits. The Town Museum is dedicated to the history of the municipality. Visitors enjoy a stunning view of the surrounding hills from the ruins of the Rychleby Castle, overlooking the Račí Stream valley near Javorník. Hikers can get to the castle by following red trail markings, which start in Javorník (approximately 4 km).
www.mestojavornik.cz / 50°23'28.185"N, 17°0'8.790"E

Jánský vrch Javorník Chateau (1)  **TIP**
Zámek 60, Tel.: +420 584 440 286, **www.janskyvrch.cz** / Opening hours: April, October Sat, Sun, public holidays 9am–3pm, May–August Tue–Sun 9am–4pm, September Tue–Sun 9am–3pm / 50°23'23.394"N, 17°0'1.193"E

Borůvková hora Observation Tower **TIP**

The observation tower forms a part of hiking, skiing, and cycling trails. The 24-metre-high tower provides a wonderful view of the Otmuchów and Nysa lakes situated in Poland and of Šerák, Praděd, Smrk, and Králícký Sněžník on the Czech side of the border. To reach the tower, follow the trails from Javorník, Travná, Bílá Voda and Poland. There is free access, open year-round. More information available at information centres.

Tel.: +420 731 551 020, www.boruvkovahora.websnadno.cz / 50°23'25.175"N, 16°54'8.043"E

Račí Valley

The picturesque valley of the Račí Brook was declared a reserve in 1998 in order to protect the forests, which have a primeval nature. The protected area spreads over both sides of the Račí Brook, including the Čertova kazatelna and Pustý zámek localities. The valley also includes the Tančírna – a former Art Nouveau restaurant with a dance hall, once a popular tourist destination.
Uhelná 126, Javorník, Tel.: +420 584 440 161, +420 777 946 373, www.racludoll.cz / 50°22'17.297"N, 16°59'59.881"E

Žulová

When in Žulová, do not forget to visit the parish church with its tower of a unique design. For refreshment, have a swim in the local flooded quarries and in the waterfalls nearby.
www.zulovsko.cz / 50°18'33.606"N, 17°5'55.353"E

Rychleby Bike Trail (2) **TIP**

The Rychleby trails are mountain bike trails near Černá Voda. These are not routes from A to B but several linked routes made from remodelled and adapted old hunting paths. It is the largest network of mountain bike trails in the Czech Republic. There are more than 40 kilometres of unique trails in the Rychleby Mountains, with various levels of difficulty, and one trail for less advanced off-road cyclists.

Černá Voda 267, Tel.: +420 606 426 050, +420 721 412 754 (IC) www.rychlebskestezky.cz / 50°17'58.940"N, 17°9'20.948"E

Nýznerovské Waterfalls

A body of small waterfalls and cascades in the Stříbrný potok valley. The turbulent stream erodes the rock and creates holes, basins, and "giant pots" of various shapes. This nature reserve lies about 5 km south-east of the town of Žulová and the village of Skorošice.
www.zulovsko.cz / 50°16'30.998"N, 17°3'14.998"E

Vidnava

On the Czech-Polish border, it is a town featuring an important heritage zone and a town museum. Other noteworthy points include a row of houses on the square, the Church of St. Catherine, 18th-century statues, and the former bailiff's chateau. On hot days, visitors can refresh themselves in the local quarry.

www.vidnava.cz / 50°22'17.913"N, 17°11'9.833"E



2



Town Museum Javorník  **free**
Nádražní 160, **www.kulturnidumjavornik.cz**,
Tel.: +420 584 440 276 / Opening hours:
October–May tel. arrangement, June–September
Tue–Fri 10am–12pm, 1pm–4.30pm, Sun
10am–1pm / 50°23'33.894"N, 17°0'20.468"E

Javorník swimming pool 
Tel.: +420 584 440 622 /
50°23'28.413"N, 17°0'18"E

Stonemasonry Museum in Žulová

Josefské náměstí 1 (1. floor) / Opening hours:
April–October daily except Mon 9am–4pm /
50°18'32.889"N, 17°5'59.445"E

Biocentre Střední díly

The Střední Díly Biocentre is located in the lower part of Javorník. Its main feature is a water reservoir with an area of 17 hectares. There are also two separate shallow wetlands, which are the home of amphibians and wetland vegetation.

Events in 2013

Javorník
www.kulturnidumjavornik.cz

May 1, The May Day hike up to the Blueberry Mountain

May 25, Days of the Javorník Region,
tel: +420 584 440 688, **www.mestojavornik.cz**

September–October, International Karel Ditters von Dittersdorf Classical Music Festival
Opening concert of the 21st annual festival
Tel: +420 584 440 688
www.mestojavornik.cz

Tourist Card – ALL INCLUSIVE

Olomouc • Central Moravia • Jeseníky Mountains

OLOMOUC region CARD

The Olomouc region Card is a tourist card allowing you to visit **many attractive sights free of charge** in **Olomouc**, in **Central Moravia** and in the **Jeseníky Mountains**.

FREE: available at **70** sights

- Castles • Chateaux • Museums • Theater • ZOO Olomouc
- Public Transportation in Olomouc • Botanical Garden
- Arboretum • Minigolf • Golf

DISCOUNT: available at **120** sights

- Caves • Sport • Restaurants • Accommodation • Spa Procedures
- Swimming pools • Water Parks • Adrenaline Experiences



Šternberk Castle



Gold Ore Mill, Zlaté Hory



Javoříčko Caves



Adrenalin Park Jeseníky, Česká Ves

Tips for trips

The tips for trips are specified in prices for 2 adults and a 6–15-year-old child using a 48-hour card. The price of the card is included.

OLOMOUC – Exploring and Relax

Saving: cca 2 500 CZK

- 1. 1/2 Days:** Olomouc Public Transportation (valid 48 h.) – Audio Tour Guides
– Moravian Theatre Olomouc – Accommodation (Hotel Flora) **2. Days:** The Archdiocesan Museum
– Archbishop's Palace – Lunch (Restaurant Podkova) – Minigolf – Zoo
3. 1/2 Days: Antique Car Arena VETERAN ARENA – Lunch (Hotel Hanácký dvůr) – Golf Resort Olomouc

JESENÍKY – Get to know the true unique

Saving: cca 1 090 CZK

- 1. Days:** Velké Losiny Chateau – Handmade Paper Factory V. Losiny – Lunch (Hotel Praděd, V. Losiny)
– Pumped-storage electric works Dlouhé Stráně – Kareš Ski Centre (Go-carts, Sommerski),
Kouty nad Desnou – Accommodation (Hotel Dlouhé Stráně), Kouty n. D. **2. Days:** The „Witch Trials“
Exhibition, Šumperk – Thematic walks through Šumperk – Town Hall Šumperk – Museum of National
Art and History Šumperk – Zábřeh Museum – Úsov Chateau

Selling points or up-to-date offers find you on

www.olomoucregioncard.cz

Published by: Olomouc Region, Jeremenkova 40a, 779 11 Olomouc, E-mail: tourism@kr-olomoucky.cz, www.kr-olomoucky.cz,
Tel: +420 585 508 111, Fax: +420 585 508 832 | Design, Texts, Production: Quix s. r. o. | Photography: m-ARK, Tomáš Marek,
Ivo Netopil, Archives of the Municipalities, CzechTourism | Maps: Jan Machovský | Print: Quix s. r. o.

Olomouc 2012

ISBN 978-80-87535-60-8

Not for sale – Co-financed by the EU, www.rr-strednimorava.cz.